

1642 MADISON AVENUE

EAST HARLEM

NEW YORK
NY

LOCATION

West block between 109th and 110th Streets

APPROXIMATE SIZE

Ground Floor 1,500 SF

Lower Level 280 SF

FRONTAGE

10 FT on Madison Avenue

TERM

Long term

POSSESSION

Immediate

SITE STATUS

Currently vacant

NEIGHBORS

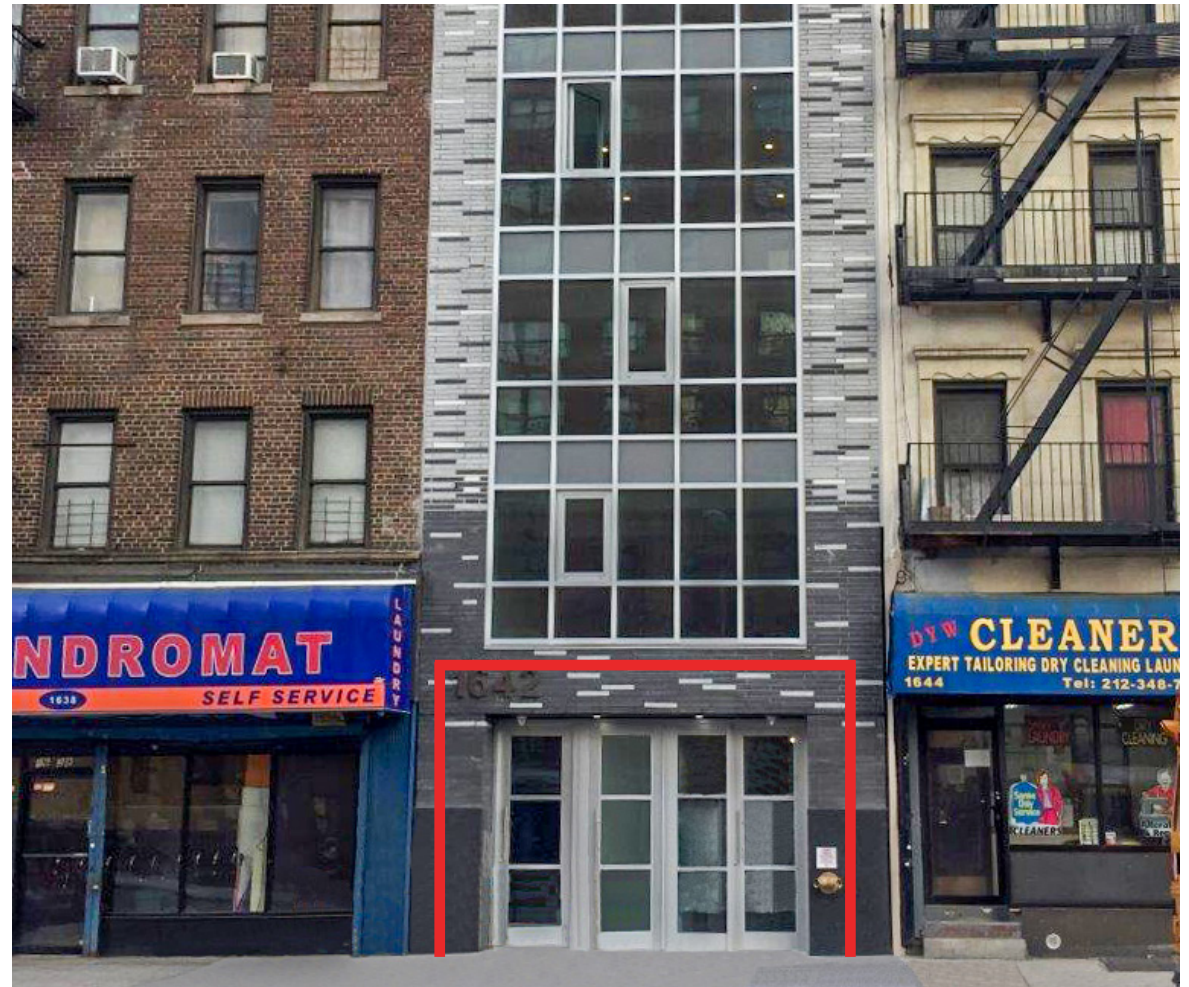
NYC Fresh Market, Bilingual Care, Boost Mobile and Northside Therapeutic Early Childhood Center

COMMENTS

All uses considered

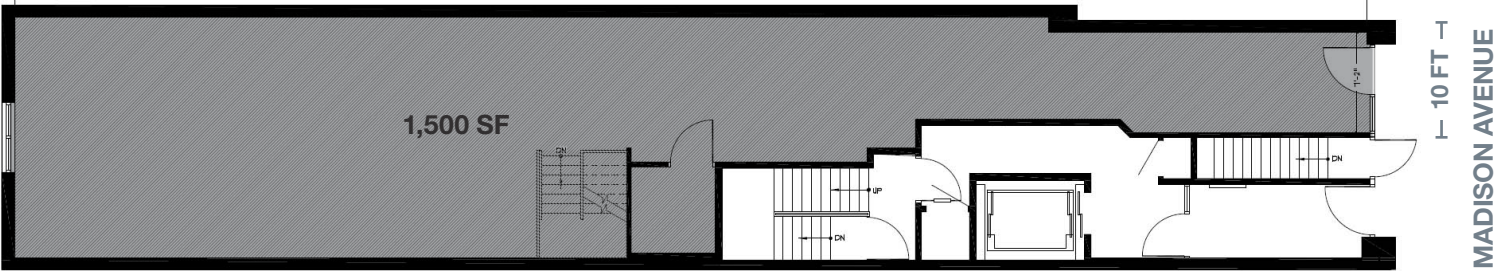
Ideal for retail, food/cafe, commissary/catering, medical or spa/ salon use

Beautiful new retail and residential building in the heart of East Harlem



FLOOR PLANS

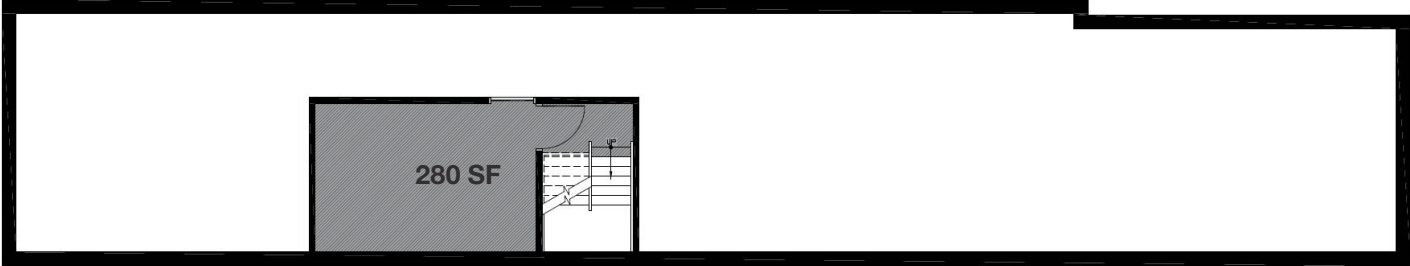
GROUND FLOOR



CONTACT
EXCLUSIVE
AGENT

RAVI IDNANI
212.916.2938
ravi.idnani@ngkf.com

LOWER LEVEL



NGKF.COM

© 2019 NEWMARK KNIGHT FRANK RETAIL. The information contained herein has been obtained from sources deemed reliable but has not been verified and no guarantee, warranty or representation, either express or implied, is made with respect to such information. Terms of sale or lease and availability are subject to change or withdrawal without notice.