

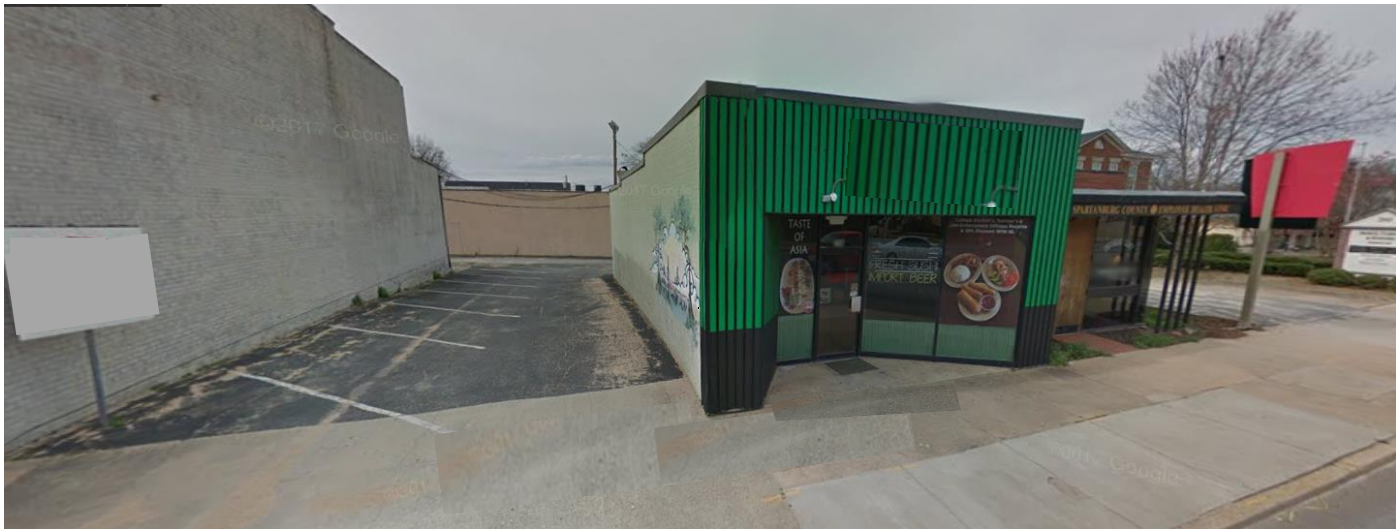
# RESTAURANT/RETAIL

254 N. Church Street  
Spartanburg, SC 29306

SITE ANALYSIS

COMMERCIAL SALES

DEVELOPMENT



- 1475± sq. ft. restaurant/retail building in downtown
- Located across from the Marriott Hotel
- Zoned DT-6 – Urban Core District
- Spartanburg County Tax Map # 7-12-06-038.00
- Situated on .13+/- acres
- 9 parks on side and back
- Hood system included
- FF&E not part of sale but negotiable

**SALE PRICE: \$275,000**

**LEASE RATE:**

**\$12/Sq. Ft., Net, Net, Net**

## Ben Hines, CFP, CCIM

380 S. Pine Street  
Spartanburg, SC 29302  
Tel 864.583.1001  
C 864.542.4777  
Fax 864.585.6188

[benhines@spencerhines.com](mailto:benhines@spencerhines.com)

[www.spencerhines.com](http://www.spencerhines.com)



## Andy Hayes, Principal

380 S. Pine Street  
Spartanburg, SC 29302  
Tel 864.583.1001  
C 864.706.0189  
Fax 864.585.6188

[ahayes@spencerhines.com](mailto:ahayes@spencerhines.com)

[www.spencerhines.com](http://www.spencerhines.com)

No warranty or representation, expressed or implied, is made to the accuracy of the information contained herein, and the same is submitted subject to errors, omissions, change of price, rental or other conditions, imposed by the principles.

