



For Lease

Bergen County Medical Space – first floor

Building specifications

- 1st Floor access / directly off parking area
- Lease directly from building ownership
- Parking ratio of 6/1,000
- Operable windows

3,650 RSF

**581 North Franklin
Turnpike, Ramsey, NJ**

Mark Siegler

+1 201 528 4422

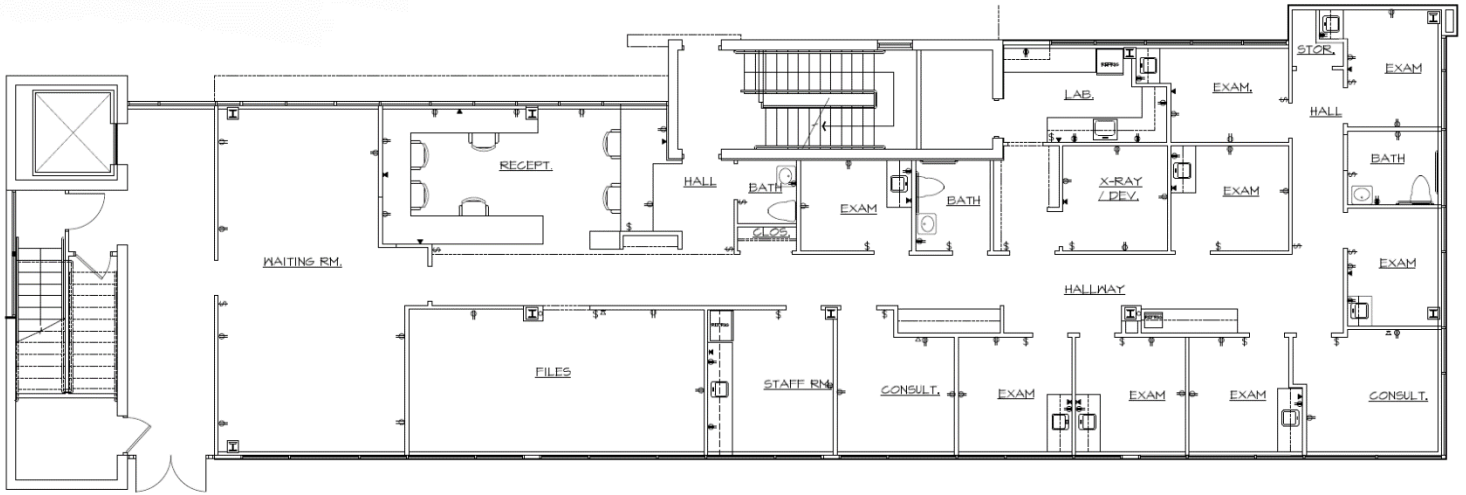
mark.siegler@am.jll.com

Marc Hirschinger

+1 201 528 4417

marc.hirschinger@am.jll.com

Floor plan



Location

- Excellent access to Route 17
- Abundant shopping, restaurants, and banks within short distance

