



FOR LEASE

MERCHANT HOTEL BUILDING

222-228 NW DAVIS STREET
PORTLAND, OR 97209

PLEASE CALL FOR RATES

JOSH BEAN
Josh@ECA-NW.com

BRIAN HANSON
Brian@ECA-NW.com

503.205.0610



ETHOS COMMERCIAL ADVISORS LLC | 2222 NE OREGON ST, SUITE 209 | PORTLAND, OR 97232

These marketing materials do not constitute an offer to sell or lease, and do not constitute or contain promises, representations or warranties of any kind. The information in these marketing materials may contain approximations and images for illustration purposes. The owner, broker and their agents assume no risk or liability for inaccuracies, errors or omissions in these marketing materials. The terms and conditions of any transaction with respect to the property shall be contained exclusively in a written purchase and sale agreement or lease between the owner and the purchaser or tenant. Prospective purchasers or tenants should perform their own inspections of the property to verify its condition, permitted uses, and all other characteristics.

LICENSED IN THE STATE OF OREGON

Listed on the National Register of Historic Places, the Merchant Hotel was originally constructed in 1880. One of the few remaining examples of cast-iron Italianate architecture, the building was a premiere luxury hotel and featured the first hydraulic elevator in the city. Today, the building is home to creative and tech-driven office tenants as well as Old Town Pizza & Brewing and Starbucks Coffee. Recent renovations include a new tenant lounge and meeting space with further improvements planned.

LOCATION

With the addition of tenants like Airbnb, neighborhood amenities in Old Town continue to blossom. The Merchant Hotel has numerous nearby food, drink, and entertainment options, multiple modes of public transportation, and convenient parking options.

Accessibility is key driver for successful businesses. The Merchant Hotel has easy access to the Burnside Bridge and public transportation options abound. Twelve bus and four streetcar lines all have stops within three blocks of the building.

HIGHLIGHTS

- Significant seismic upgrades
- After hours access and secured entrance
- Central courtyard
- New tenant lounge and meeting room
- Exposed brick, wood floors, and ornate details
- Secure bike parking
- On-site restaurants
- Skylights and over-sized windows

Significant Seismic Upgrades

New Tenant Lounge and Meeting Room

After Hours Access and Secured Entrance



Walk Score
98



Transit Score
94



Bike Score
99



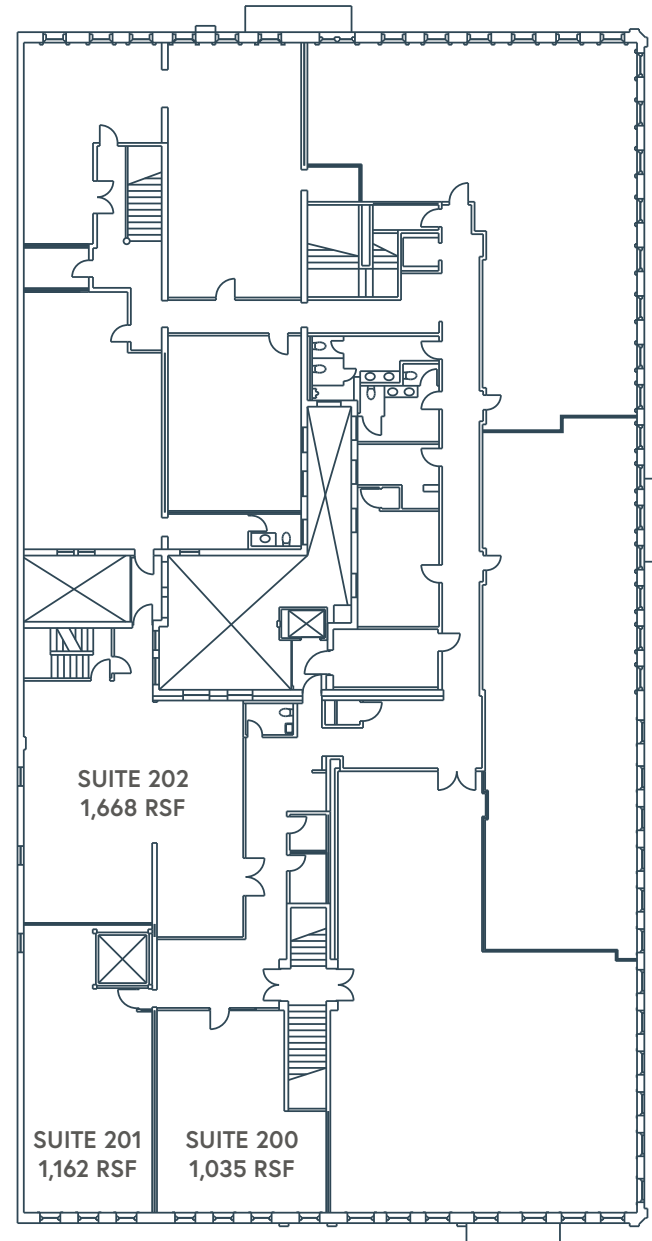
MERCHANT HOTEL BUILDING

SUITE 200 | +/-1,035 RSF

SUITE 201 | +/-1,162 RSF

SUITE 202 | +/-1,668 RSF

- Suite 200 – with wooden floors and two private offices
- Suite 201 – with wooden floors and two private offices
- Suite 202 – with with reception area and one private office
- 2nd Floor can be combined for a total of +/-3,865 RSF



SECOND FLOOR

THIS DRAWING IS NOT TO SCALE AND IS FOR ILLUSTRATIVE PURPOSES ONLY



MERCHANT HOTEL BUILDING

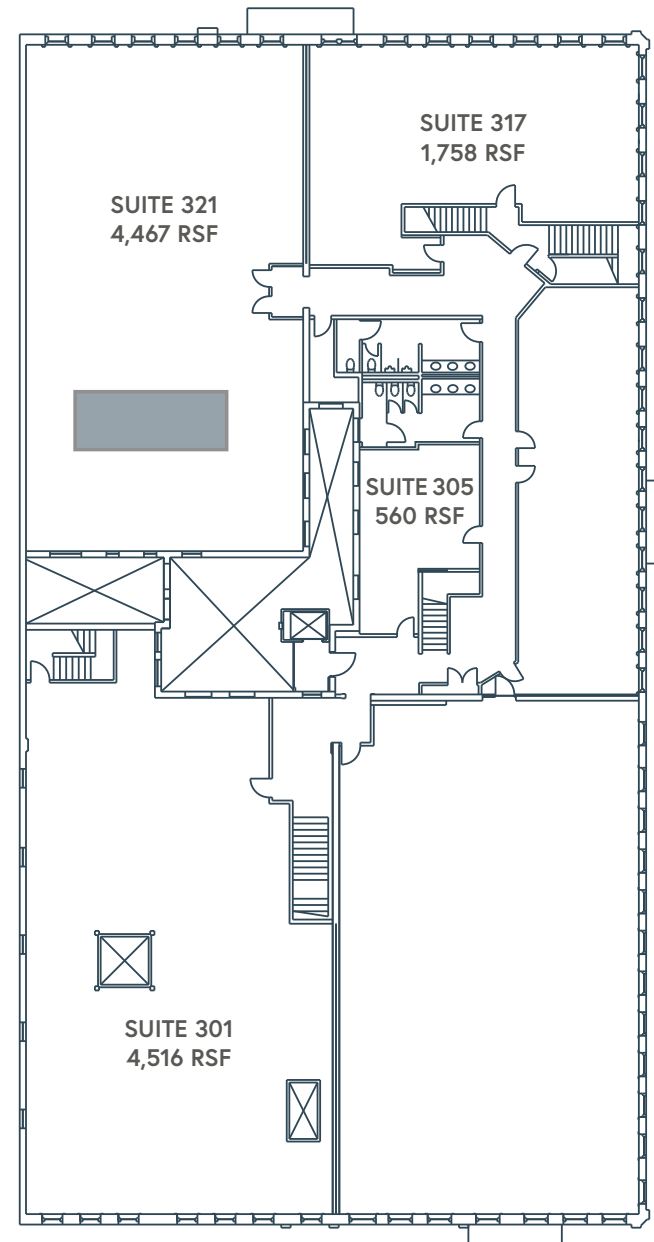
SUITE 301 | +/-4,516 RSF

SUITE 305 | +/-560 RSF

SUITE 317 | +/-1,758 RSF

SUITE 321 | +/-4,467 RSF

- Suite 301 – large open creative office opportunity with exposed bricks and high bow truss ceiling
- Suite 305 – perfect for small startup
- Suite 317 – corner office with abundant natural light
- Suite 321 – large open creative office opportunity with exposed bricks, skylights, and large windows. One private office.



THIRD FLOOR

THIS DRAWING IS NOT TO SCALE AND IS FOR ILLUSTRATIVE PURPOSES ONLY

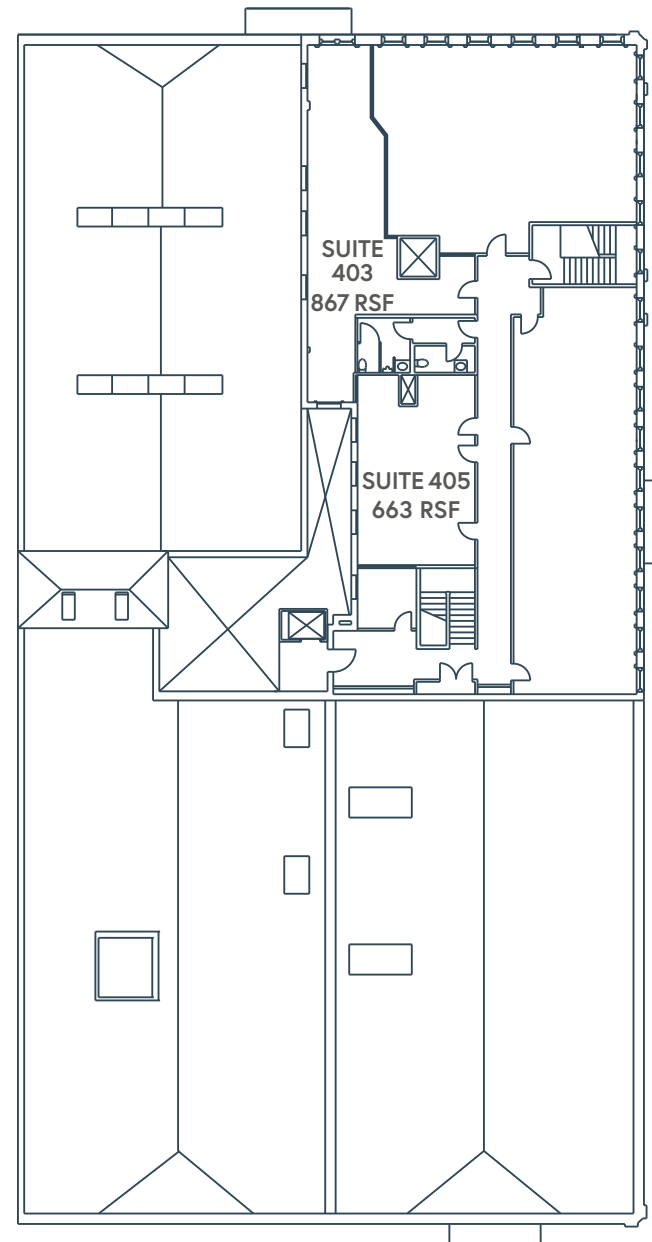


MERCHANT HOTEL BUILDING

SUITE 403 | +/-867 RSF

SUITE 405 | +/-663 RSF

- Suite 403 – with large windows for abundant natural light
- Suite 405 – with two private office options



FOURTH FLOOR

THIS DRAWING IS NOT TO SCALE AND IS FOR ILLUSTRATIVE PURPOSES ONLY







● Restaurants

● Hotels

● Parking

MAX Lines

Bus Routes

Streetcar Lines

1. Floyd's Coffee

2. Angelina's Greek Gyros

3. Old Town Pizza & Brewing

4. Freddie Brown's Deli

5. Chen's Good Taste

6. Mi Mero Mole

7. Voodoo Donut

8. Dan & Louis Oyster Bar

9. Kell's Irish Restaurant & Pub

10. Pine Street Market

1. Embassy Suites by Hilton

2. Hi-Lo Hotel

3. Kimpton Hotel Monaco

4. The Nines

5. Marriott City Center

6. Kimpton Hotel Vintage

7. Hotel Lucia

8. The Benson

9. Courtyard by Marriott

10. The Society Hotel