



DUKE REALTY GATEWAY CENTER, BUILDING 3
3410 QUANTUM BOULEVARD | BOYNTON BEACH, FL
FOR LEASE CLASS A OFFICE/WAREHOUSE



CONTACT

ROBERT SMITH
Executive Vice President
+1 561 707 5558
robert.c.smith@cbre.com

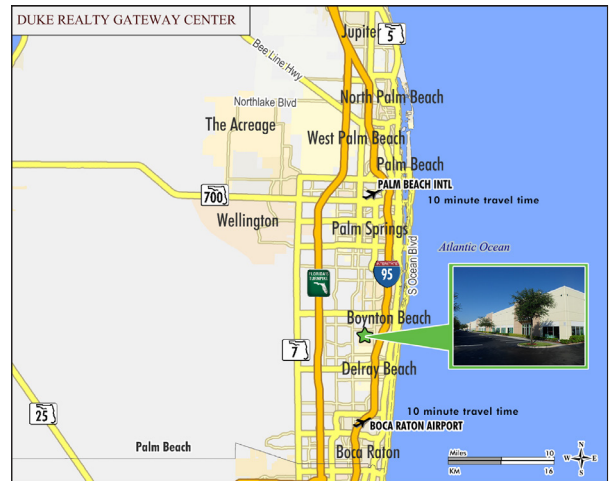
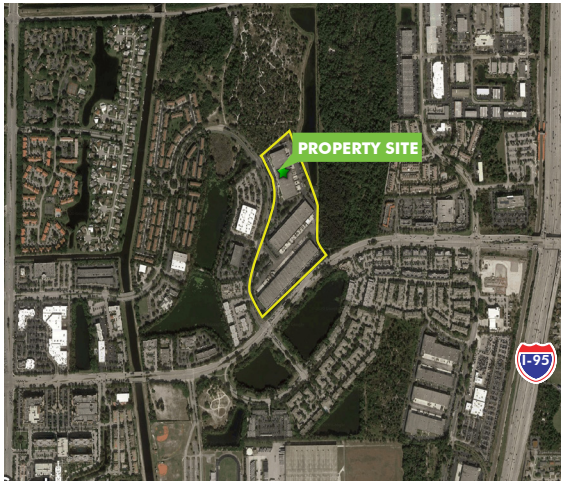
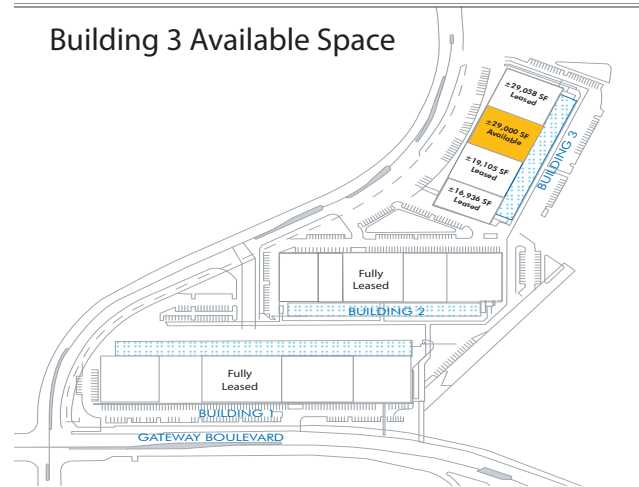
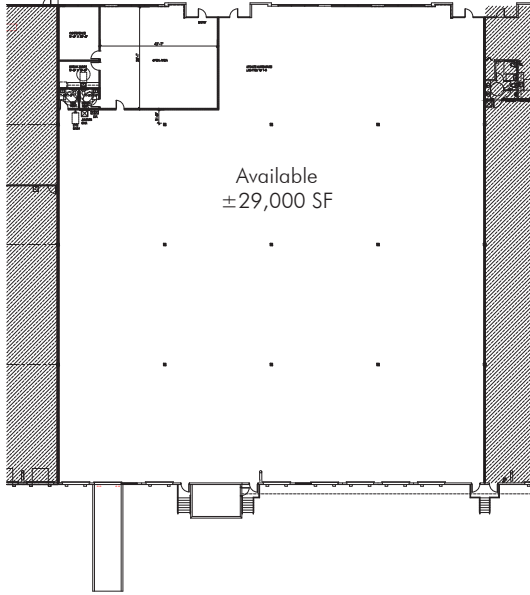
CBRE



.....

HIGHLIGHTS

- Building #3 totaling ±94,098 SF
- Total Available SF: ±29,000 SF
- Office SF: ±2,300 SF
- Competitive rental rate
- Dock with Ramp loading
- 24' minimum clear height
- Column spacing 40' x 40', 50' x 50'
- NEC Gateway Blvd. and Quantum Blvd.
- Heart of Palm Beach
- Fiber with diversity available
- 60' concrete apron
- E.S.F.R. fire protection system
- Fenced in storage yard
- Available For Immediate Occupancy



CONTACT



ROBERT SMITH
 Executive Vice President
 +1 561 707 5558
 robert.c.smith@cbre.com

