

MEADOWS SQUARE

SUITE 105



3801 W. 34th Street, Suite 105
Sioux Falls, SD 57106

FOR LEASE

\$15.00 / SF NNN
2,151 - 4,417 SF

SIZE

- 2,151 USF to 4,417 USF +/-

PRICE

- \$15.00 / SF NNN
- Estimated NNN: \$4.68 / SF

LOCATION

- Corner, endcap and interior bay available located at West 34th Street and South Shirley Avenue with convenient access to Louise Avenue, I-29 and the Empire Mall.

DESCRIPTION

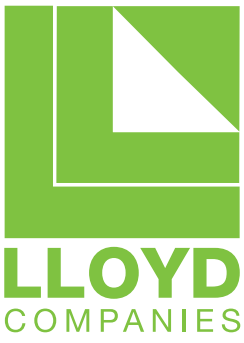
- Flexible retail or office space available at Meadows Square
- Co-tenants include Michaels, CosmoProf and Gamestop
- Property is near many dining and shopping destinations including Chevys Fresh Mex, Sam's Club, Home Depot, Menard's, Sonic Drive-In, PetSmart, Sally Beauty, Aldi, Dress Barn, World Market, Walmart and much more
- Several opportunities for tower, building and monument signage
- Owner is a licensed real estate broker in South Dakota
- Contact Broker for additional information

Find out more at lloydcompanies.com

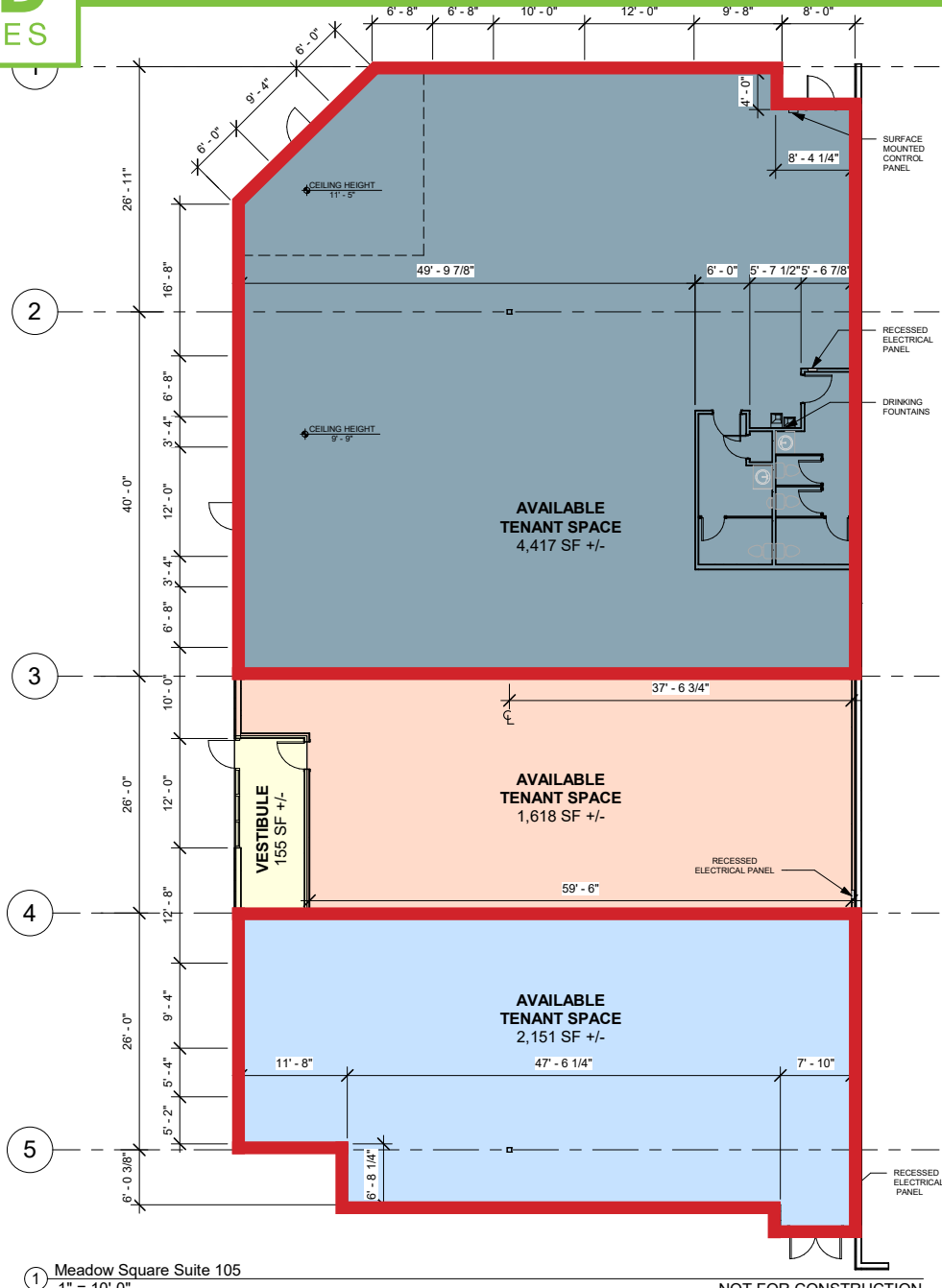
RAQUEL BLOUNT, SIOR
605 728-9092
raquel@lloydcompanies.com

101 S. Reid Street | Ste. 201 | Sioux Falls, SD 57103 | 605.323.2820

Information deemed reliable, but not guaranteed.



MEADOWS SQUARE SUITE 105



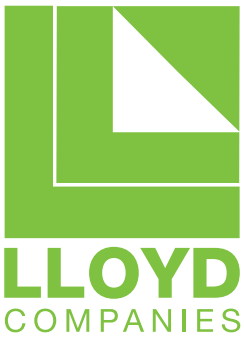
① Meadow Square Suite 105
1" = 10'-0"

NOT FOR CONSTRUCTION.

FLOOR PLAN

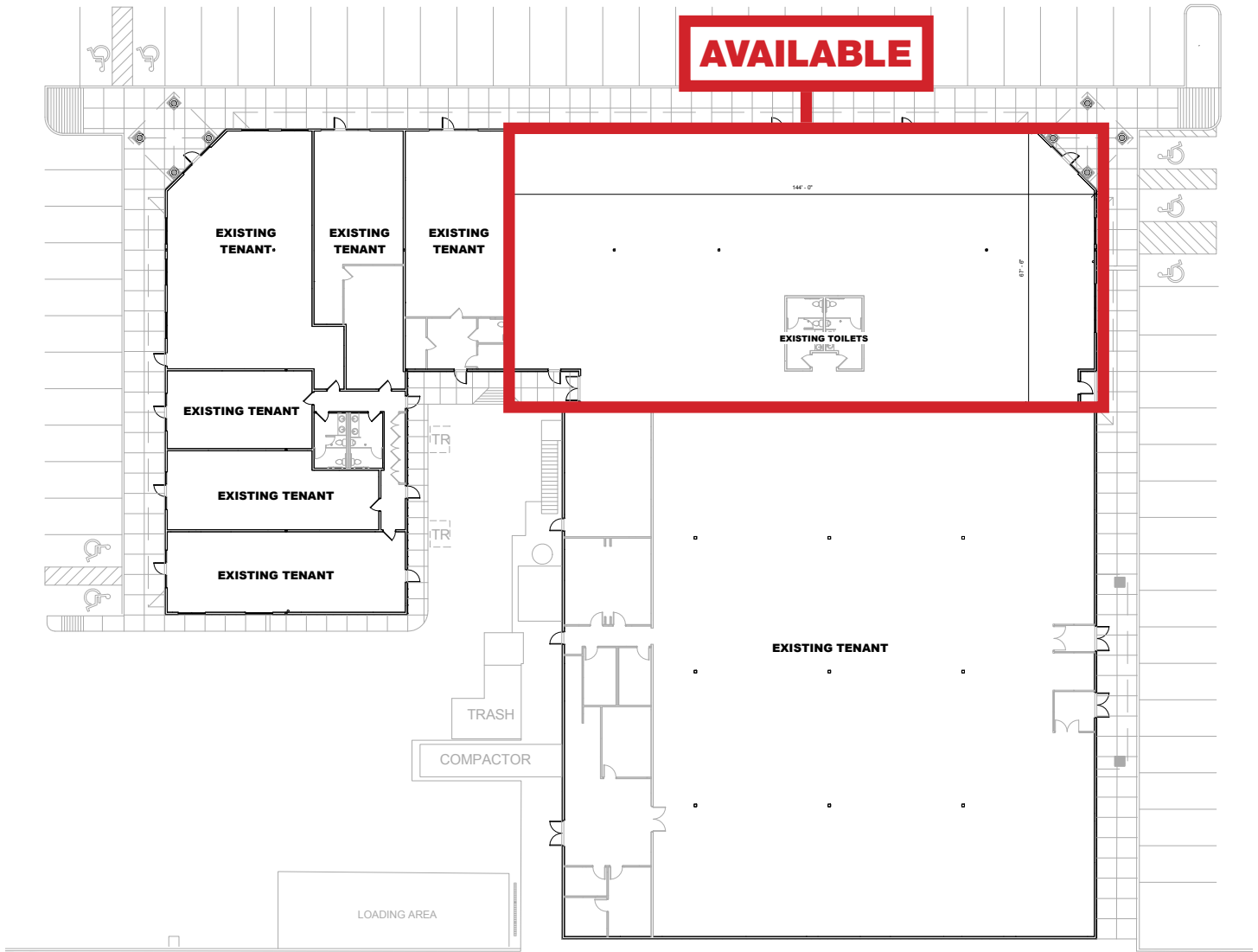
Concept only;
subject to change

RAQUEL BLOUNT, SIOR
605 **728-9092**
raquel@lloydcompanies.com



MEADOWS SQUARE

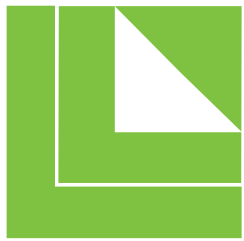
SUITE 105



SITE PLAN

Concept only;
subject to change

RAQUEL BLOUNT, SIOR
605 **728-9092**
raquel@lloydcompanies.com



LLOYD
COMPANIES

MEADOWS SQUARE

SUITE 105



EXTERIOR PHOTO AND SIGNAGE

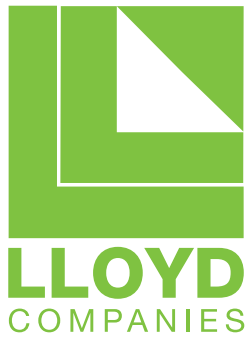
RAQUEL BLOUNT, SIOR

605 **728-9092**

raquel@lloydcompanies.com

101 S. Reid Street | Ste. 201 | Sioux Falls, SD 57103 | 605.323.2820

Information deemed reliable, but not guaranteed.



MEADOWS SQUARE SUITE 105



AREA MAP

RAQUEL BLOUNT, SIOR
605 **728-9092**
raquel@lloydcompanies.com



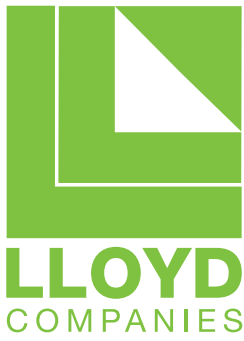


MEADOWS SQUARE SUITE 105



RAQUEL BLOUNT, SIOR
605 728-9092
raquel@lloydcompanies.com

REGION MAP



MEADOWS SQUARE SUITE 105

SIoux FALLS MSA DEMOGRAPHICS

Sioux Falls is one of the fastest-growing areas in the nation with a population growth rate nearly four times the national average. As the largest retail center between Denver and the Twin Cities, Sioux Falls offers the consumer a vast selection of goods with thousands of retail stores scattered throughout the metro area. Employing approximately 12.4 percent of the metro labor force, the retail sector has a primary market area of 650,000+ consumers and draws shoppers from a four state area.

Source: City of Sioux Falls Planning Department
<http://www.siouxfallsdevelopment.com/demographics.cfm>

*Prior to December 31, 1992, the Sioux Falls Metropolitan Statistical Area consisted of Minnehaha County. On December 31, 1992, the Federal Office of Management and Budget revised the MSA designation to include Lincoln County. The 2005-2012 MSA figures include the counties of McCook & Turner.

Major Employers:

- Sanford Health - 9,542
- Avera Health - 8,298
- Smithfield Foods - 3,600
- Sioux Falls School District - 3,400
- HyVee Food Stores - 3,116
- Wells Fargo - 2,262
- Citi - 1,800
- Good Samaritan Society - 1,500
- Walmart/Sam's Club - 1,460

POPULATION		
YEAR	SIoux FALLS	MSA*
2010	153,888	228,261
2014	165,800	240,202
2018	185,100	285,387

PROJECTED POPULATION		
YEAR	SIoux FALLS	MSA
2025	201,800	325,391
2030	217,000	370,693
2035	233,200	422,608

AGE DISTRIBUTION	
AGE (YEARS)	SIoux FALLS
0-19	28.1%
20-64	59.2%
65+	12.6%

SIoux FALLS HIGHLIGHTS

- Forbes has also identified Sioux Falls as the nation's top small city for business and careers.
- Forbes named Sioux Falls #20 in Job Growth, #30 in Cost of Doing Business, #41 in Education and #1 in their 2015 top 10 list of Up and Coming Cities for Recent College Grads.
- Sioux Falls MSA has the 8th strongest local economy in the US, according to POLICOM Corporation's annual economic strength rankings in 2015.
- WalletHub ranked Sioux Falls #1 in 2014 for "Wallet Wellness" which gages the connection between physical, financial and emotional health, #4 as best city for families in 2016, #4 as best city in America to find a job in 2015, and #9 for best-run city in America in 2015.
- League of American Bicyclists recognized Sioux Falls with a bronze-level as a bicycle-friendly community.
- MoneyRates.com classified Sioux Falls as #7 for Best Cities for Young Entrepreneurs, in the top 10 nationally for Young Adult Affluence and #2 for Cities with Favorable Business Tax Climates.
- In 2016, MSN Money listed Sioux Falls #10 in this list of the 25 Most Livable Cities in the U.S.
- Sioux Falls ranked #8 in 2015 for well-being, according to the Gallup-Healthways 2015 Well-Being Index.
- Sioux Falls was mentioned as one of 25 happiest, healthiest cities in America by Prevention Magazine, winning the all-around healthiest category due to its highest levels of self-reported health. Easy commutes, low crime and unemployment, and good access to health insurance were also highly recognized. Healthline also recognized Sioux Falls among their top 10 list of Healthiest Small Towns in the U.S. in 2016.
- Livability.com recognized Sioux Falls in the top ten for "Best Place to Live in 2015", mentioning its big-city mixture of culture, business and industry.
- Sioux Falls came in at #6 in WalletHub's 2018 Best-Run Cities in America ranking. The list assessed 150 of the most populated cities nationwide by comparing the services residents receive against the city's total budget. A "quality of services" score was calculated according to 35 metrics related to the categories of financial stability; education; health; safety; economy; and infrastructure and pollution.
- SmartAsset ranked Sioux Falls as the #1 US city for young professionals in 2017 and 2018. The ranking took into account the city's median gross rent, five-year change in median earnings, entertainment and arts establishments, job diversity, unemployment rate, labor-force participation rate, and the number of people age 25 to 34 in the city.

RAQUEL BLOUNT, SIOR
605 **728-9092**
raquel@lloydcompanies.com