



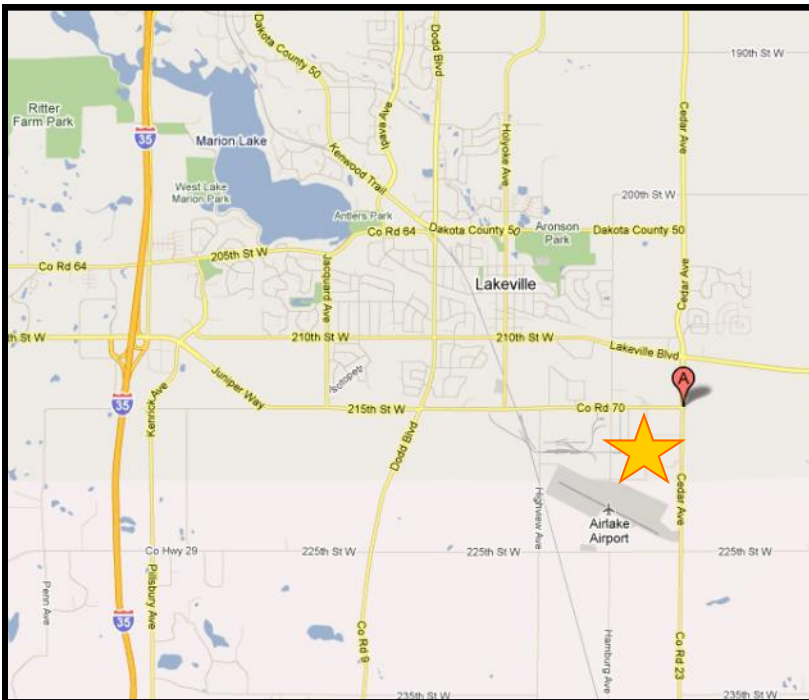
For Lease

21XXX Cedar Avenue, Lakeville, MN



Cedar 70 Business Park Office/Warehouse Space

- ◆ **Excellent Lakeville location**
- ◆ **Current Availability:**
Suite 21661—Building D - 2,592 SF
(all warehouse)
- ◆ **Ample parking**
- ◆ **Visibility on Cedar Avenue and Highway 70**
- ◆ **Located in the second largest industrial park in Minnesota (Airlake Industrial Park)**



For more information, contact us at:
952.469.9444
Bruce Rydeen
brucer@cerron.com

Visit our website to view this property in more detail or other properties CERRON has available at:
www.CERRON.com

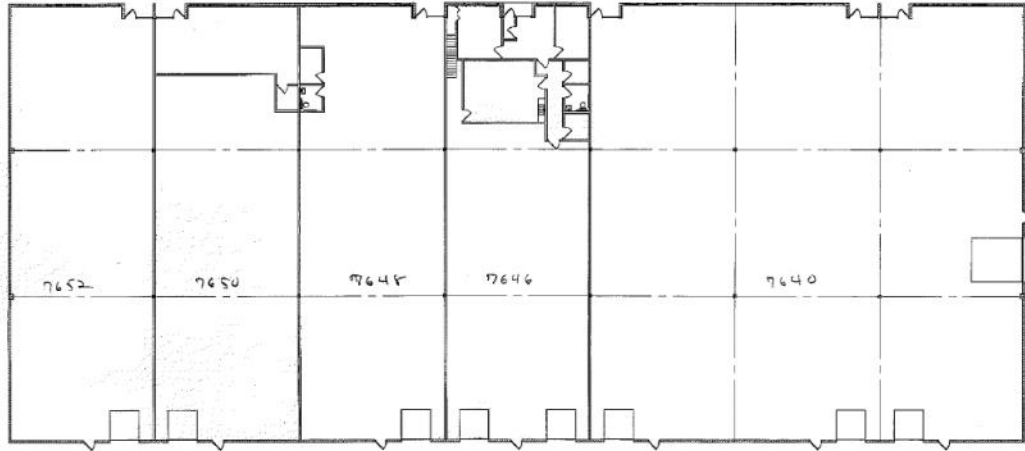
Creating Property Solutions for you... with you



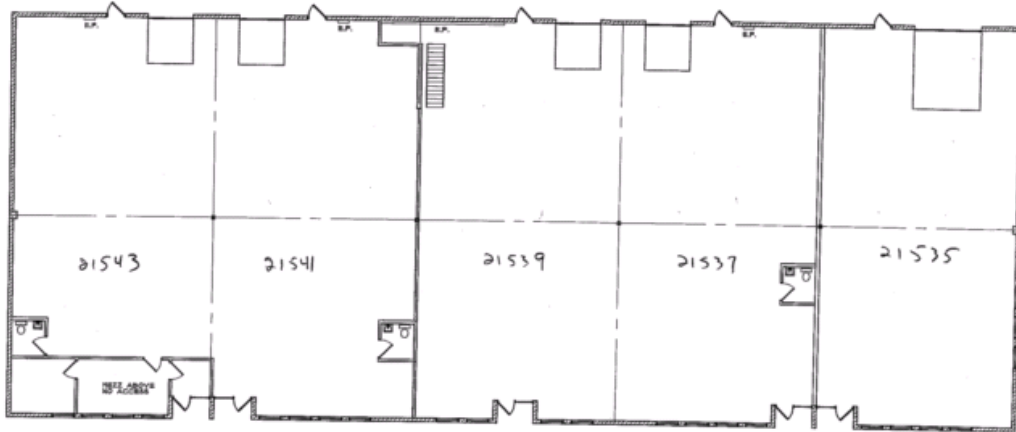
Floor Plans

21XXX Cedar Avenue, Lakeville, MN

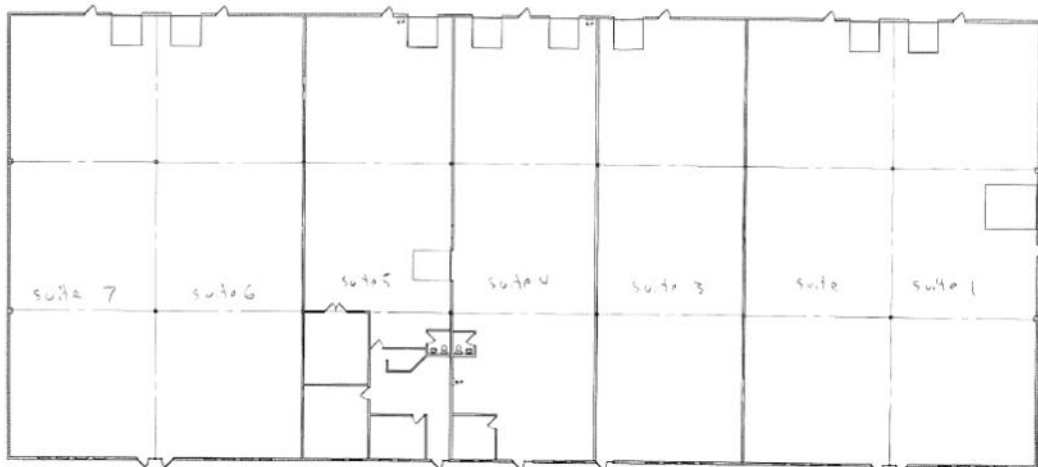
Building A Floor Plan



Building B Floor Plan



Building C Floor Plan



Creating Property Solutions for you... with you

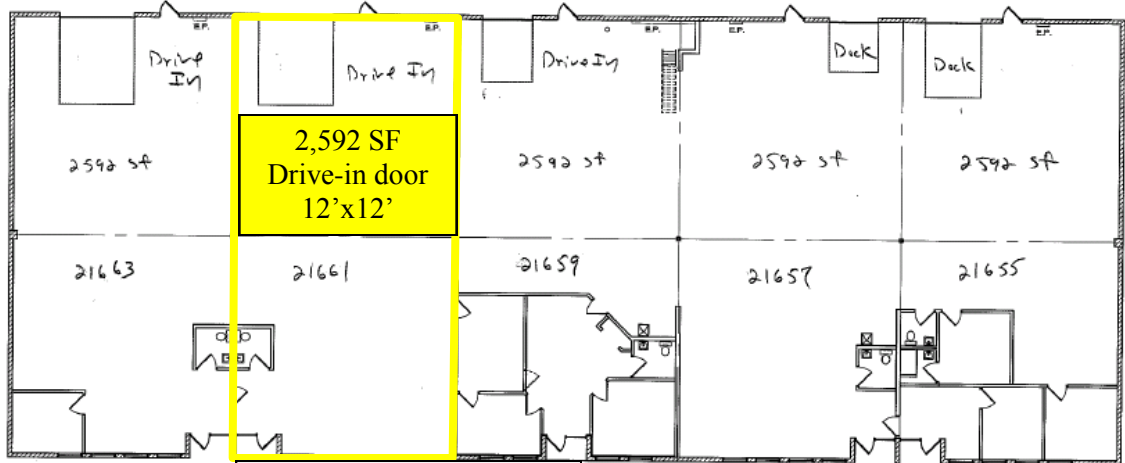
The information contained herein is deemed reliable but is not guaranteed. We have not verified its accuracy nor do we make any warranty or representation about it. You and your tax and legal advisors should conduct your own investigation of the property and transaction.



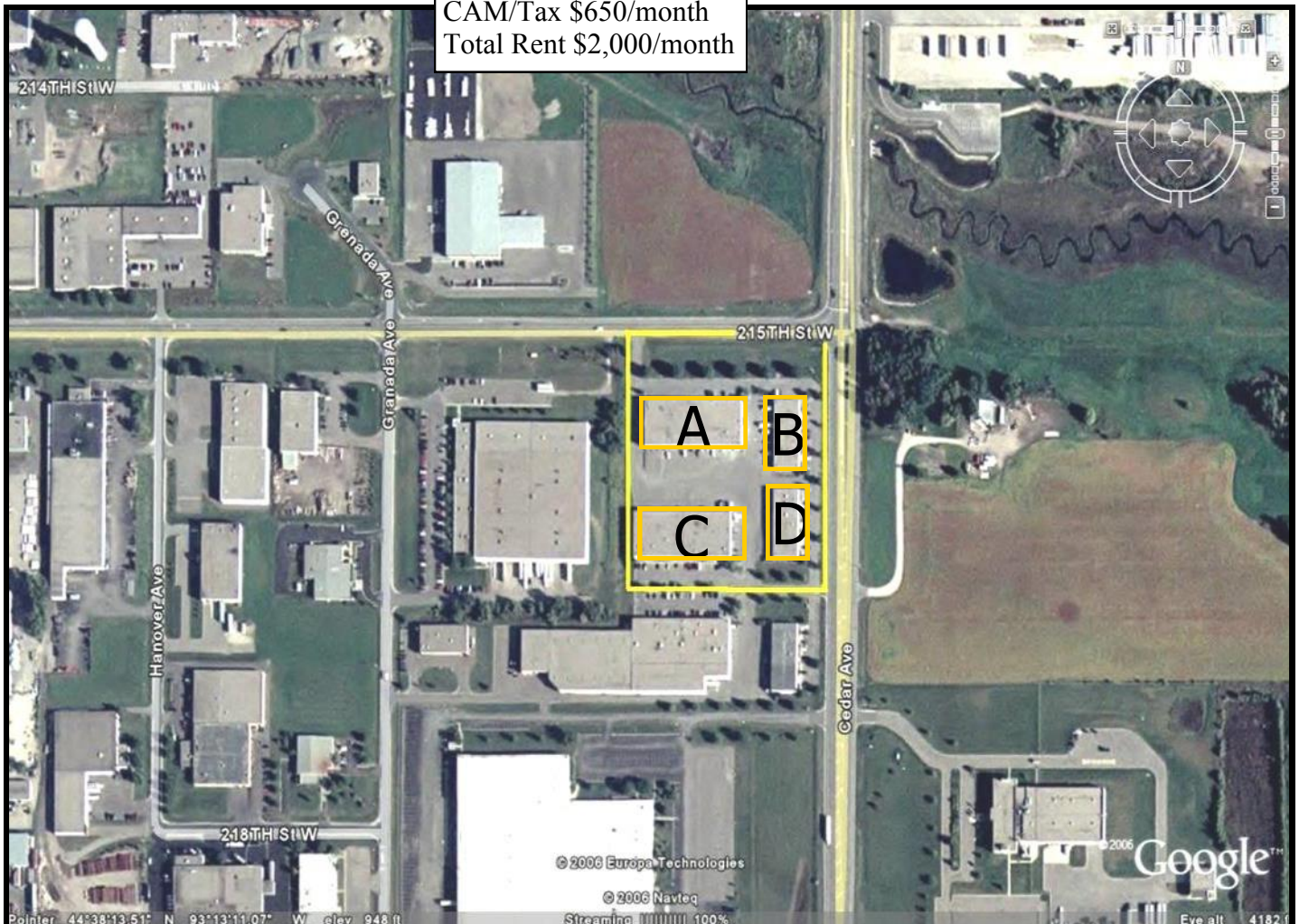
Floor Plans/Site Layout

21XXX Cedar Avenue, Lakeville, MN

Building D Floor Plan



Base Rent \$1,350/month
CAM/Tax \$650/month
Total Rent \$2,000/month



Creating Property Solutions for you... with you

The information contained herein is deemed reliable but is not guaranteed. We have not verified its accuracy nor do we make any warranty or representation about it. You and your tax and legal advisors should conduct your own investigation of the property and transaction.