

# For Sale: 13.01 Acres

## Old Orangeburg Road at Platt Springs Road



CLICK HERE TO  
WATCH VIDEO



**NA**Columbia

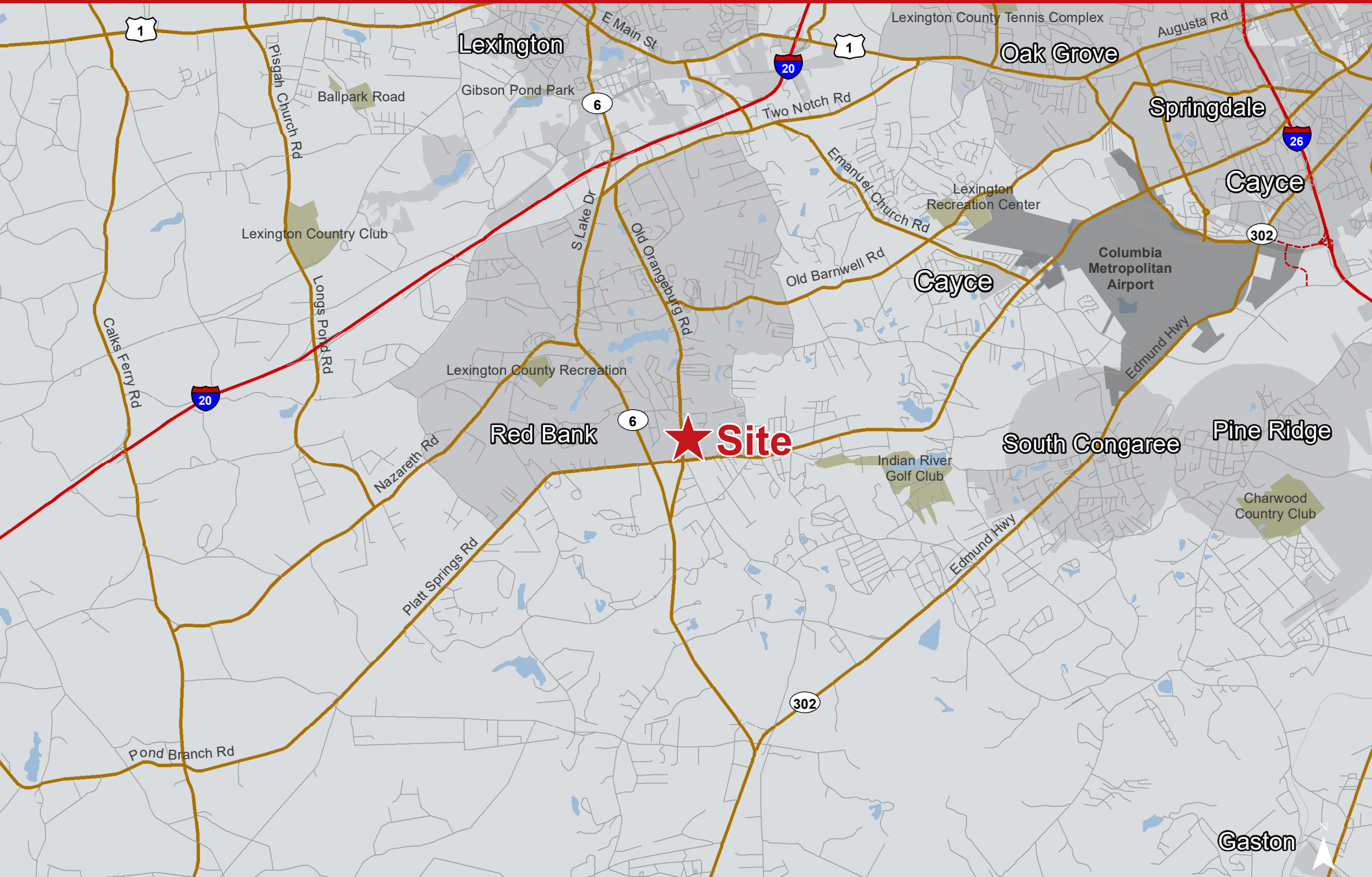
Exclusively Listed By:  
Lee Bussell, Jr. | +1 803 744 9865 | lbussell@naicolumbia.com

# Property Overview

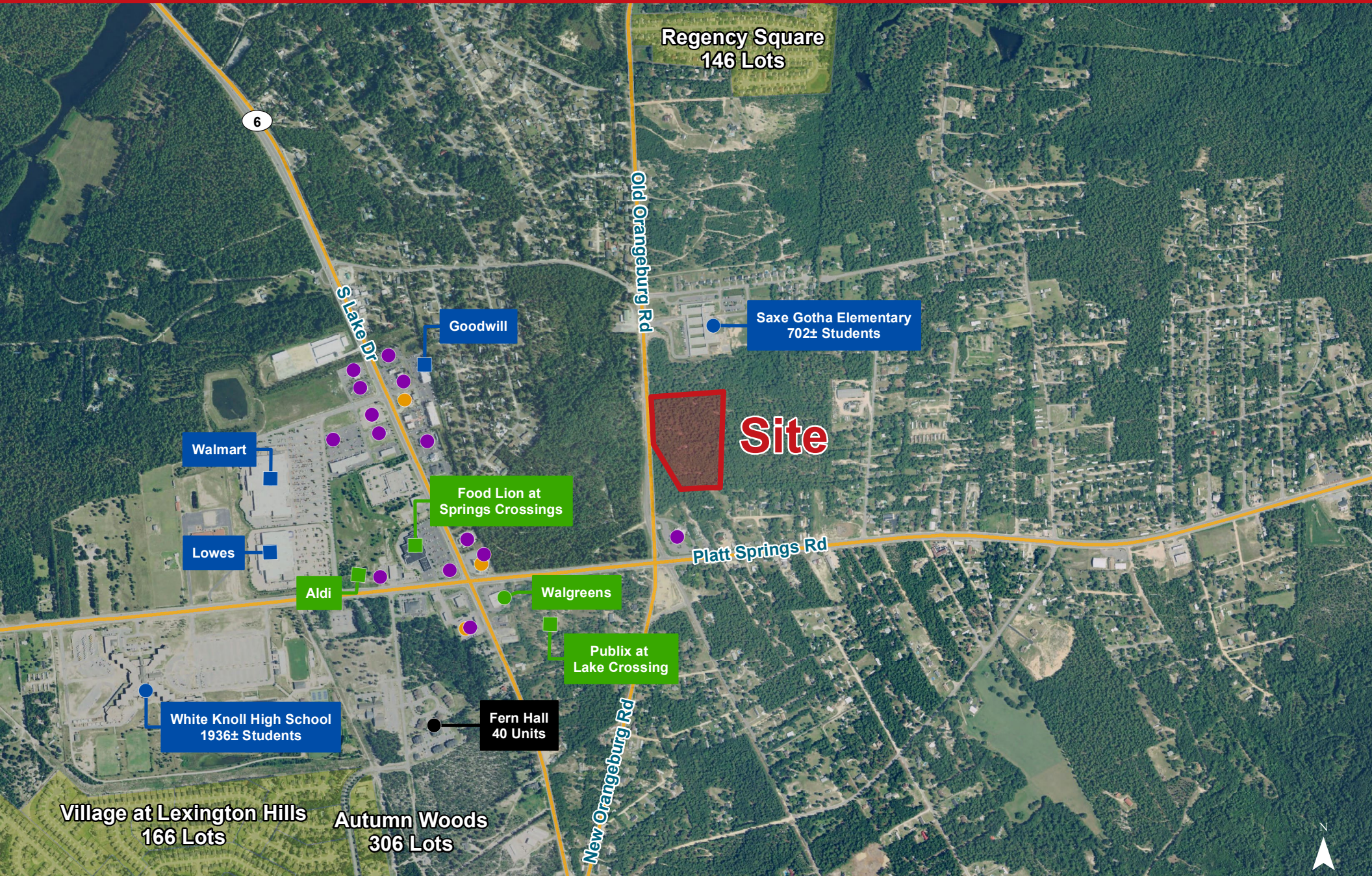


- For Sale: **±13.01 acres of land**
- Near the intersection of Old Orangeburg Road and Platt Springs Road in Redbank
- **±474 feet** of frontage on Old Orangeburg Road
- Water and sewer available
- 2018 Traffic counts on Platt Springs Road (Station 301): 16,300 vehicles per day
- **Sales price: \$2,000,000**

# Location



# Points of Interest





Old Orangeburg Rd



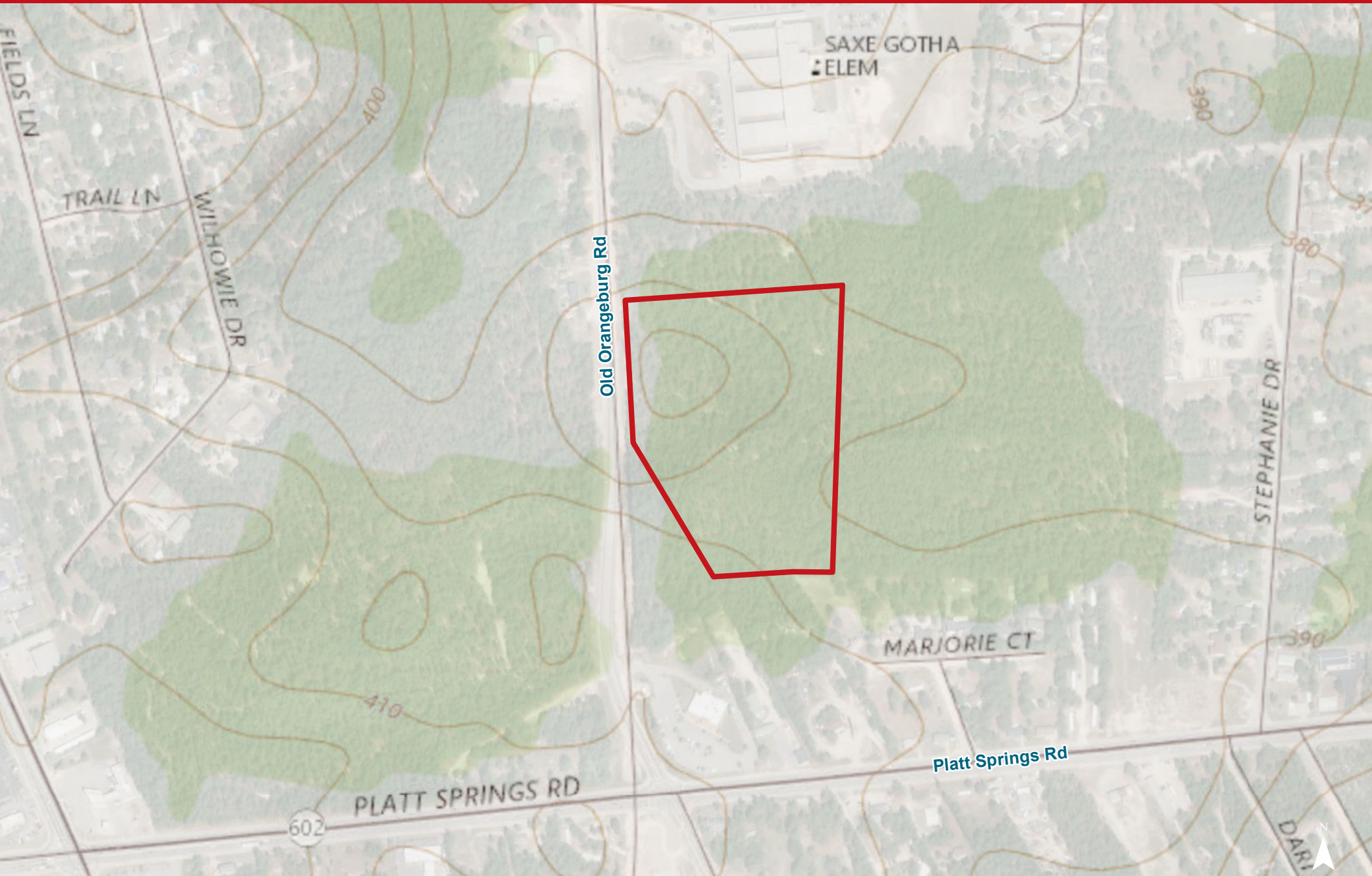
# Infrared



# Topography | 4' Contours



# Topographical Map

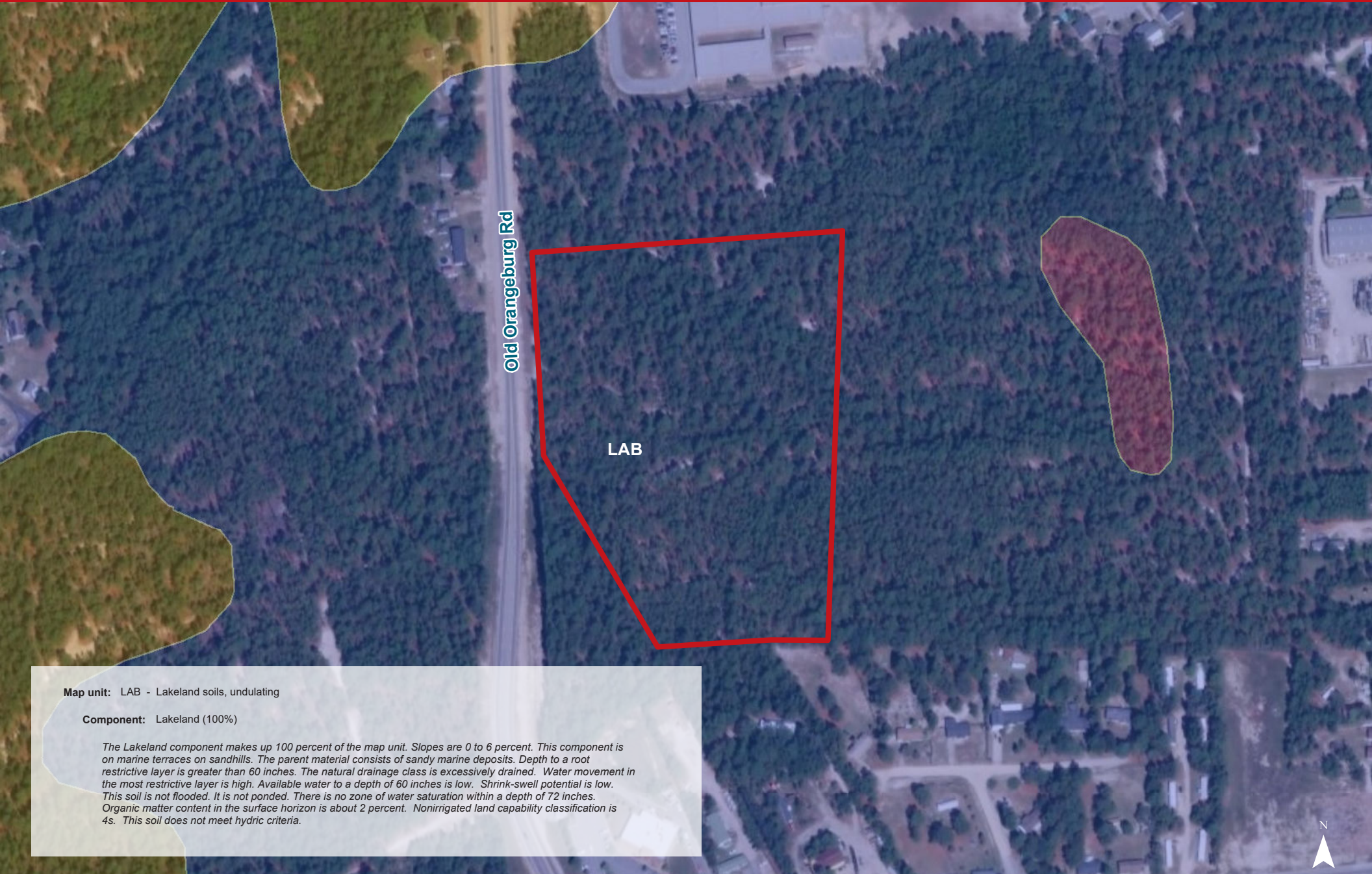




# FEMA National Flood Hazard Layer



# Soil Survey



**Map unit:** LAB - Lakeland soils, undulating

**Component:** Lakeland (100%)

*The Lakeland component makes up 100 percent of the map unit. Slopes are 0 to 6 percent. This component is on marine terraces on sandhills. The parent material consists of sandy marine deposits. Depth to a root restrictive layer is greater than 60 inches. The natural drainage class is excessively drained. Water movement in the most restrictive layer is high. Available water to a depth of 60 inches is low. Shrink-swell potential is low. This soil is not flooded. It is not ponded. There is no zone of water saturation within a depth of 72 inches. Organic matter content in the surface horizon is about 2 percent. Nonirrigated land capability classification is 4s. This soil does not meet hydric criteria.*

# NAI Columbia

## Demographic Profile

## Demographic Profile

Old Orangeburg Road & Platt Springs Road - Lexington, South Carolina

	1 Mile	3 Miles	5 Miles		1 Mile	3 Miles	5 Miles		1 Mile	3 Miles	5 Miles
<b>Population</b>				<b>2019 Age Dist.</b>				<b>Median Household Income</b>			
2010 Census	2,640	18,620	47,986	0 - 4	7.2%	7.2%	6.7%	2019 Estimate	\$51,166	\$54,337	\$57,826
2019 Estimate	2,940	23,003	57,919	5 - 9	7.2%	7.3%	6.9%	2024 Projection	\$58,292	\$60,069	\$64,230
2024 Projection	3,211	25,271	63,400	10 - 14	7.0%	7.1%	6.8%				
% Chg. 2019-2024	9.2%	9.9%	9.5%	15 - 19	6.0%	6.0%	5.9%	<b>Average Household Income</b>			
				20 - 24	5.8%	5.7%	6.0%	2019 Estimate	\$71,938	\$68,547	\$71,535
<b>Households</b>				25 - 34	15.2%	15.6%	15.0%	2024 Projection	\$85,644	\$79,603	\$82,953
2010 Census	1,018	6,911	18,264	35 - 44	14.3%	14.7%	14.2%				
2019 Estimate	1,135	8,465	21,810	45 - 54	12.6%	13.0%	13.5%	<b>Per Capita Household Income</b>			
2024 Projection	1,238	9,270	23,787	55 - 64	12.9%	12.5%	12.6%	2019 Estimate	\$27,308	\$25,345	\$26,791
				65 - 74	8.0%	7.6%	8.4%	2024 Projection	\$32,491	\$29,340	\$30,957
<b>Families</b>				75 - 84	3.1%	2.8%	3.3%				
2010 Census	726	5,049	13,113	85+	0.7%	0.6%	0.8%	<b>2019 Household Income Dist.</b>			
2019 Estimate	793	6,102	15,463					Less than \$15,000	13.5%	10.9%	9.4%
2024 Projection	860	6,649	16,790	<b>Median Age</b>				\$15,000 - \$24,999	9.1%	8.3%	6.6%
				2010 Census	33.6	33.5	34.9	\$25,000 - \$34,999	8.5%	8.8%	9.1%
<b>2019 Dist. by Race &amp; Ethnicity</b>				2019 Estimate	36.0	35.7	36.8	\$35,000 - \$49,999	17.6%	15.9%	13.4%
White Alone	82.1%	82.5%	81.8%	2024 Projection	36.8	35.7	36.8	\$50,000 - \$74,999	19.4%	24.3%	26.9%
Black Alone	9.5%	10.8%	11.5%					\$75,000 - \$99,999	10.1%	10.4%	11.6%
American Indian Alone	0.5%	0.4%	0.4%	<b>Average Household Size</b>				\$100,000 - \$149,999	11.1%	14.3%	15.6%
Asian Alone	0.9%	1.0%	1.6%	2010 Census	2.59	2.69	2.61	\$150,000 - \$199,999	6.3%	5.1%	5.6%
Pacific Islander Alone	0.2%	0.1%	0.1%	2019 Estimate	2.59	2.72	2.64	\$200,000 and Up	4.5%	2.1%	1.8%
Some Other Race Alone	4.1%	2.7%	2.0%	2024 Projection	2.59	2.73	2.65				
Two or More Races	2.8%	2.5%	2.5%					<b>2019 Business Data</b>			
Hispanic Origin (Any Race)	7.6%	5.7%	5.1%	<b>2019 Housing Data</b>				Total Businesses:	77	327	1,231
				Owner Occ. Housing Units	789	6,452	16,505	Total Employees:	667	2,909	13,292
				Renter Occ. Housing Units	346	2,012	5,304				