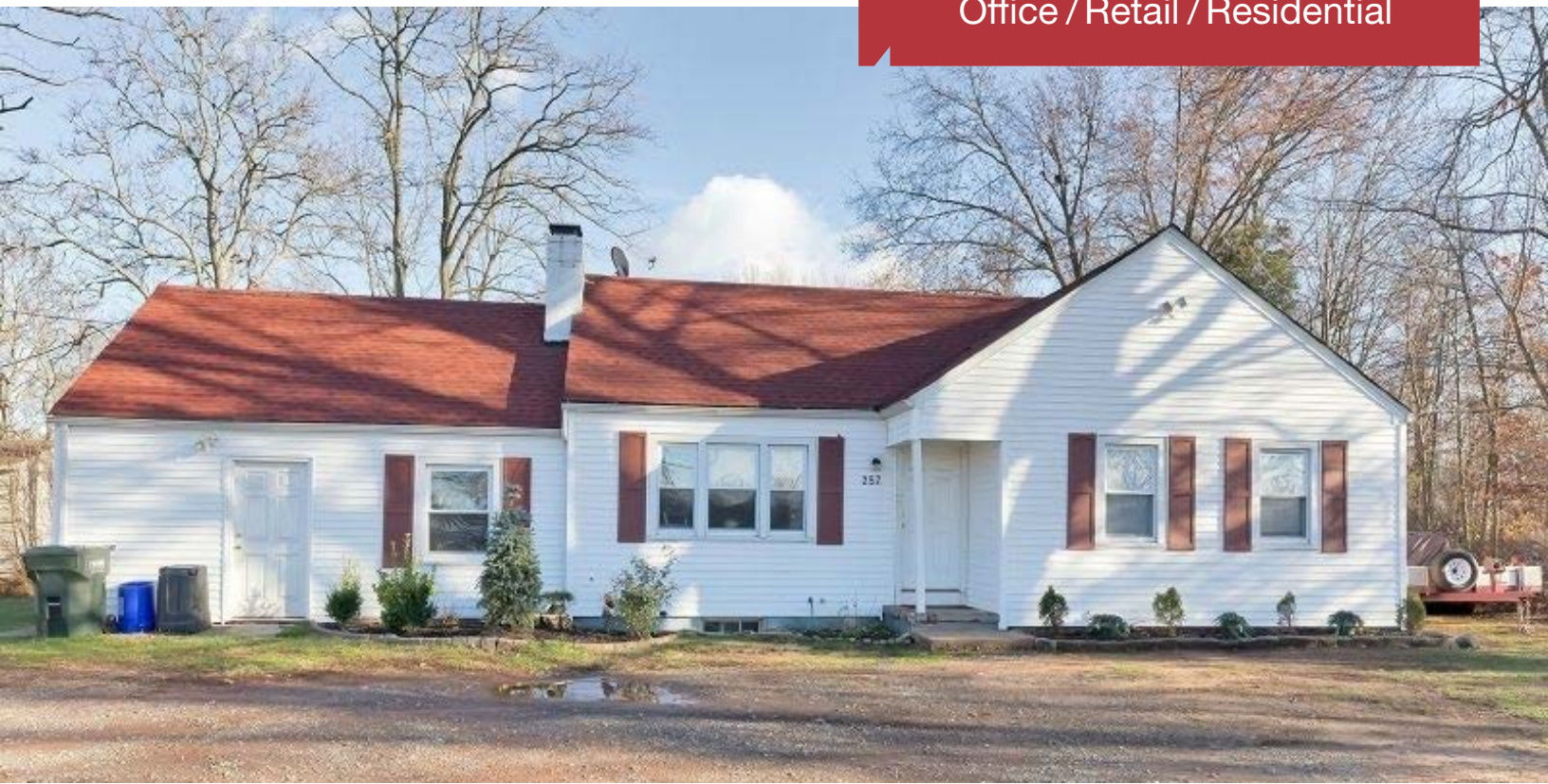


For Sale or Lease
Single Family Home Zoned
Office / Retail / Residential



257 Route 206 North

Hillsborough, New Jersey

Property Features

- Single story residential home
- Flexible Highway Service zoning permits office, retail or residential uses
- Situated on .46 partially wooded acres
- The property has been recently renovated and features a new roof and new windows, remodeled kitchen with new stainless steel appliances, new bath, spacious yard with paver patio, hardwood floors and fireplace
- Directly located on Route 206 with area retail, professional services, neighborhood parks, recreation, and schools close by
- Strong area demographics
- Call for pricing information

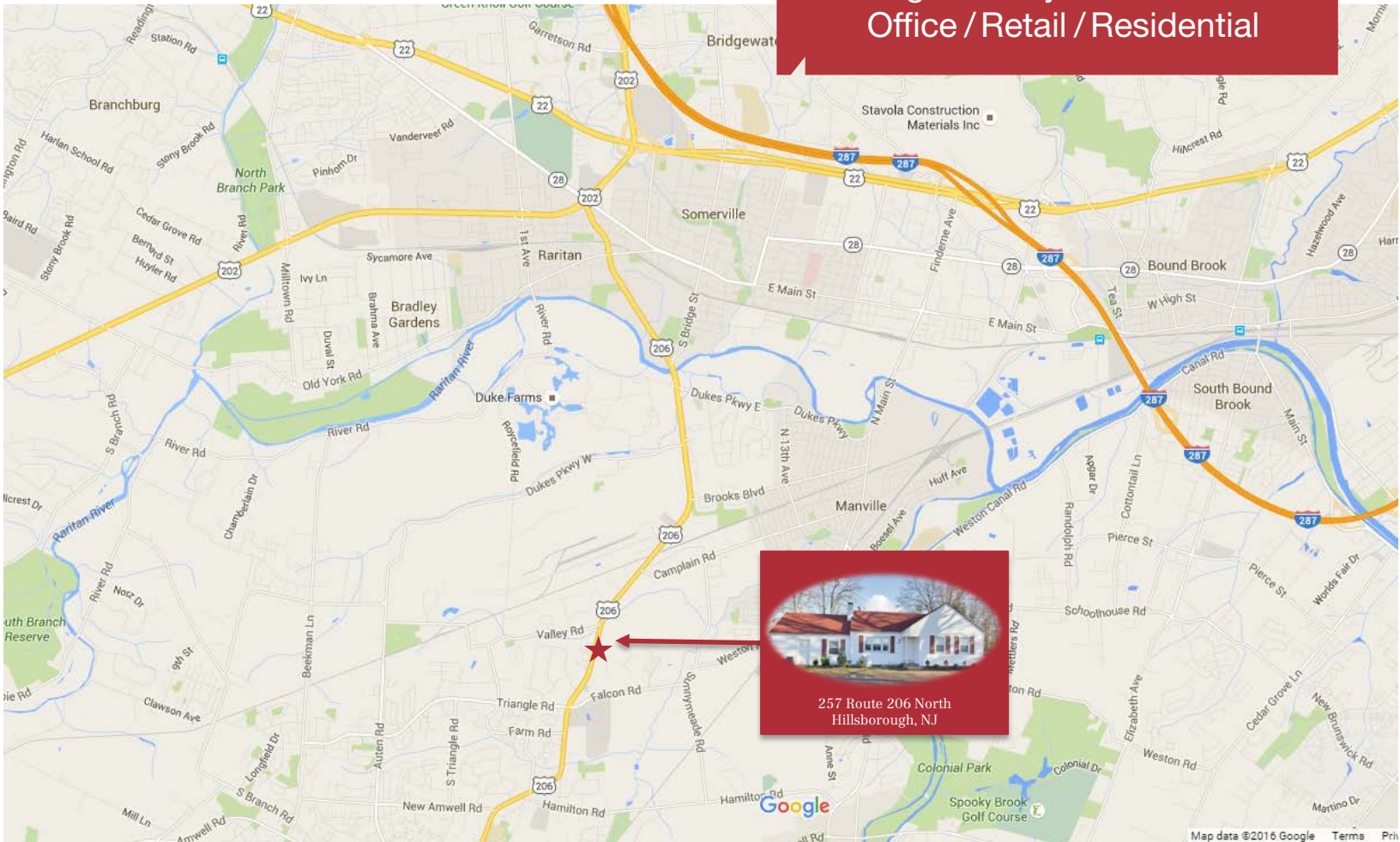


For Further Information Please Contact Exclusive Broker:

Marc Shein, Senior Vice President

732 985 3000 ext. 212 | mshein@naidb.com

For Sale or Lease
Single Family Home Zoned
Office / Retail / Residential



257 Route 206 North
Hillsborough, NJ

AREA DEMOGRAPHICS

	1 Mile	3 Miles	5 Miles
2019 Population	4,696	40,925	108,802
2019 Total Households	1,810	15,432	40,343
Average Household Income	\$96,423	\$93,381	\$102,166



Commercial Real Estate Services, Worldwide.

1315 Stelton Road
Piscataway, NJ 08854
732 985 3000 | naidb.com

For Further Information Please Contact Exclusive Broker:

Marc Shein
Senior Vice President

732 985 3000 ext. 212
mshein@naidb.com