



736 E. Main Street

Spartanburg, South Carolina 29302

Property Highlights

- Upstairs office suites
- Suites can be combined
- Newly updated
- Common bathrooms and breakroom
- Great visibility and signage on E. Main Street
- Ample parking
- High traffic count: 22,800 VPD (2018)

Available Spaces

| Spaces | Lease Rate | Size (SF) |
|-----------|---------------------------------|-----------|
| Suite 202 | \$475 per month/ Full Service | 332 |
| Suite 203 | \$2,200 per month/ Full Service | 1,981 |
| Suite 201 | \$1,240 per month/ Full Service | 1,064 |



For more information

Katherine Fulmer

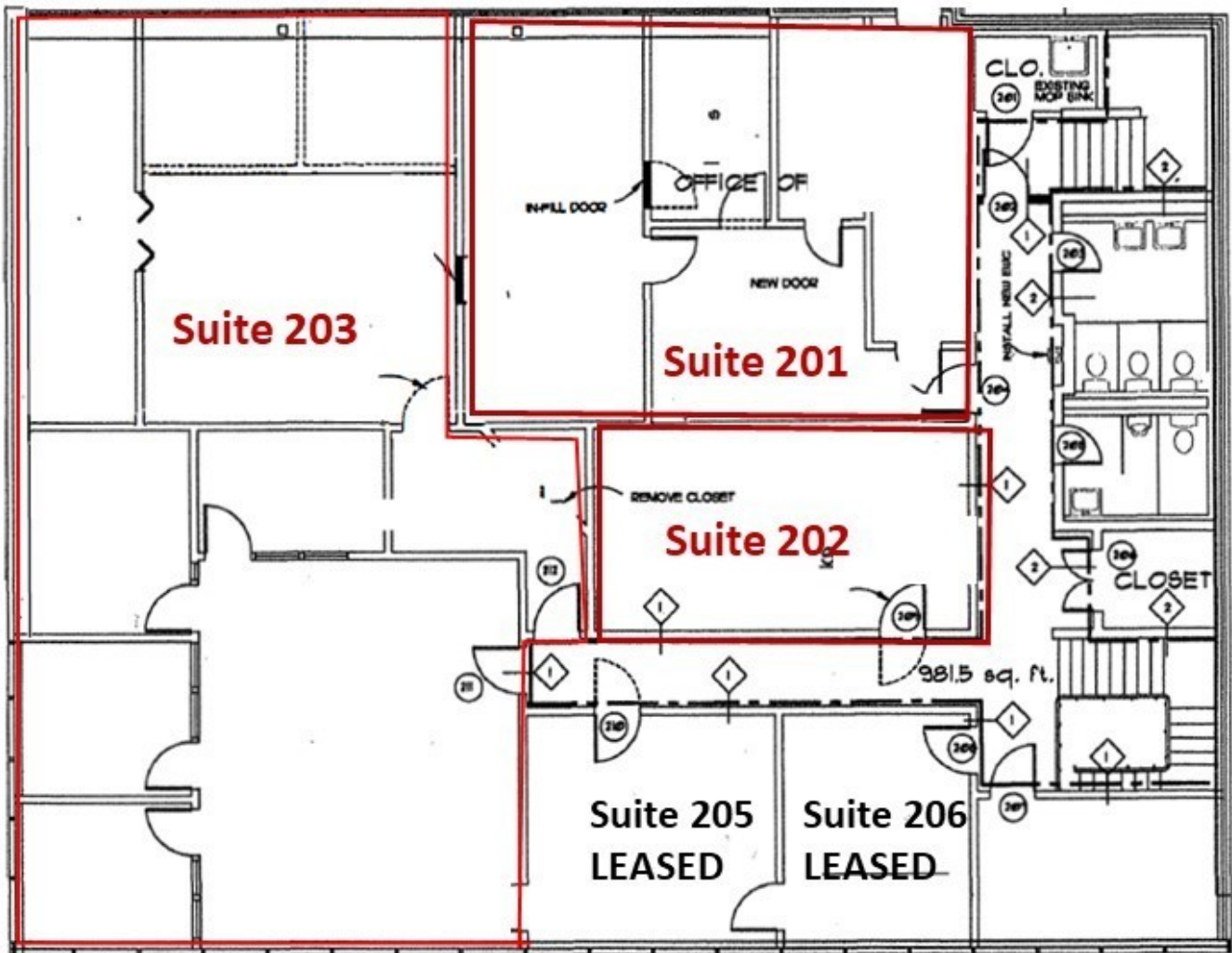
O: 864 720 1663 | C: 864 415 5931
 kfulmer@naiearlefurman.com

For Lease

Office Building Building

332 - 1,981 SF | \$475 - 2,200 per month





SECOND FLOOR PLAN