



52,000 SF

Creative Office
Space

Retail
Space

Production
Space

One Innovative
Community

ABOUT THE FOUNDRY

52,000 SF renovated
building on the E. Riverfront

Flexible floor plans

On-site parking

High ceilings & ample light

Communal conference
rooms, kitchen, and
outdoor patio

Rocket Fiber available

Elevator

Flexible lease terms

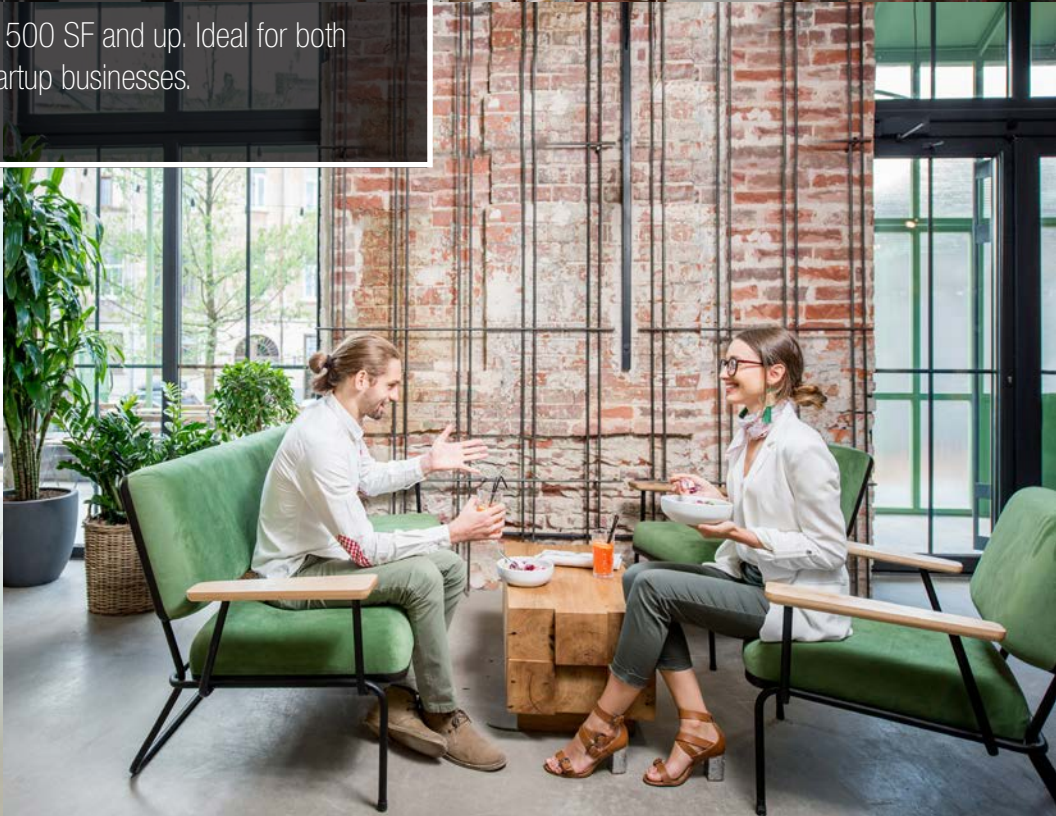
Available late 2020





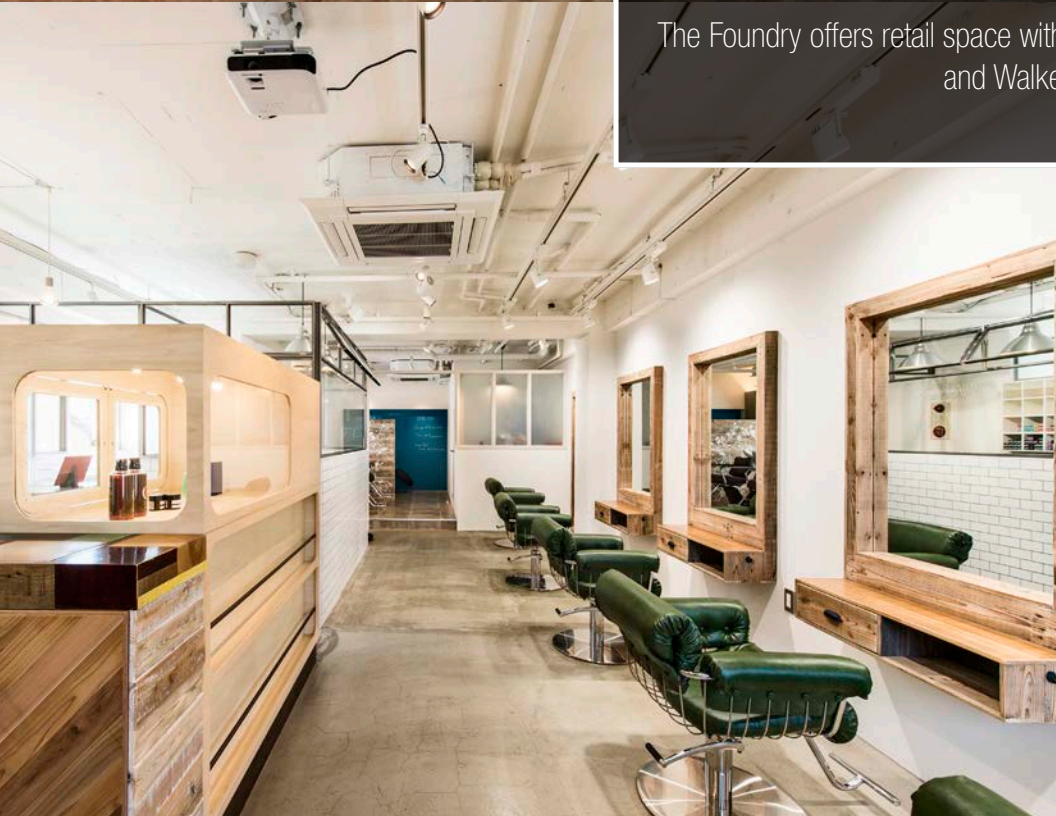
CREATIVE OFFICE SPACE

Multi-tenant suites ranging from 500 SF and up. Ideal for both established and startup businesses.





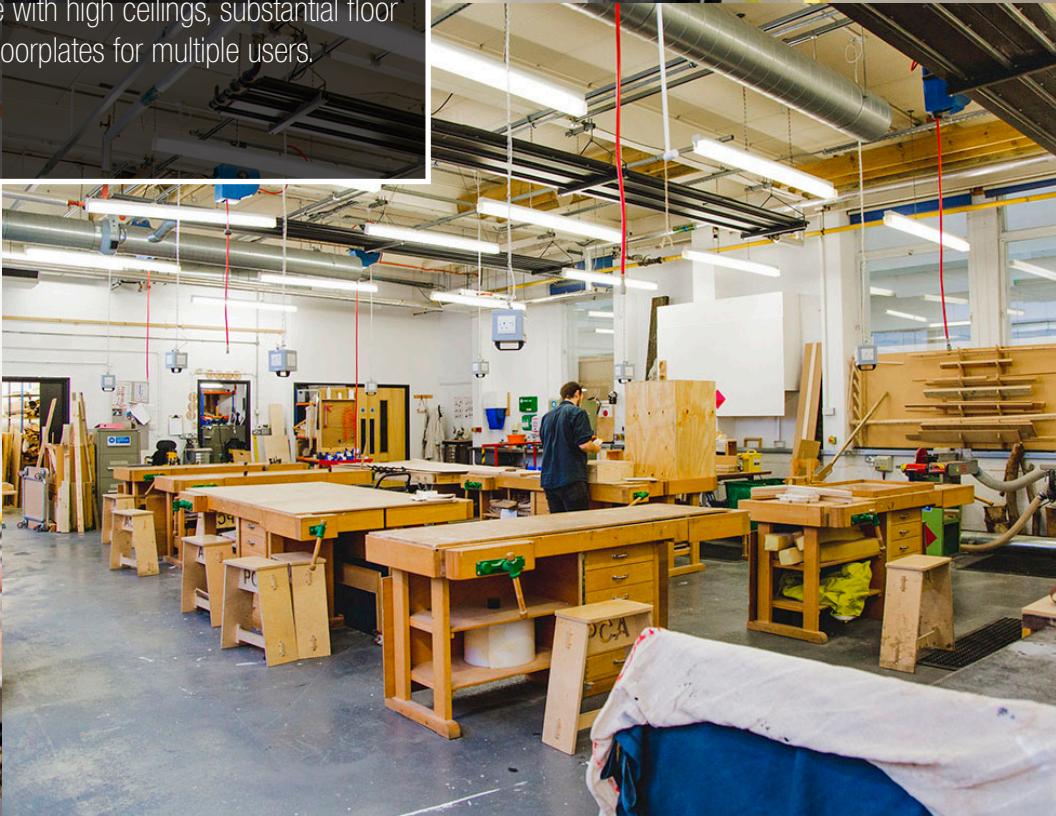
RETAIL SPACE
The Foundry offers retail space with direct access along Woodbridge and Walker Street.





PRODUCTION SPACE

Unique maker and production space with high ceilings, substantial floor loads and medium to large floorplates for multiple users.

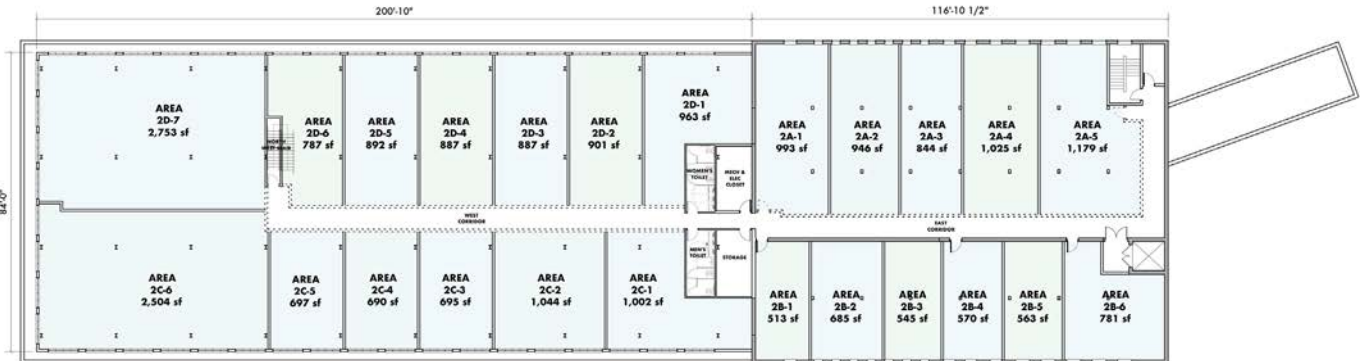


FLOOR PLAN | SMALL TENANT SUITES

First Floor

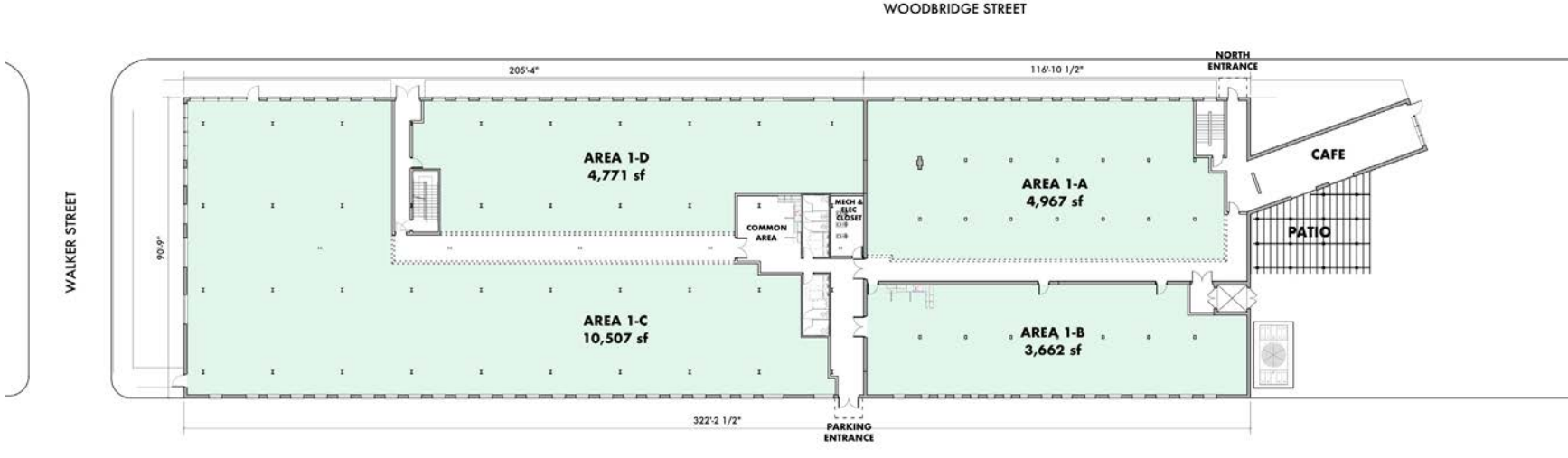


Second Floor

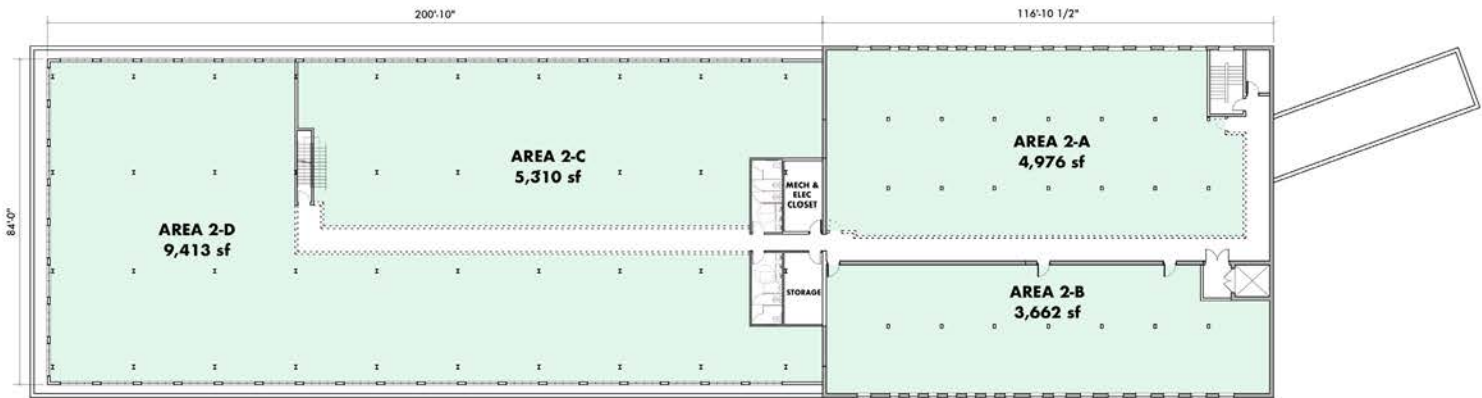


FLOOR PLAN | LARGE TENANT SUITES

First Floor



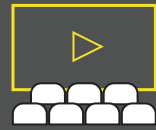
Second Floor



AMENITIES



COMMUNAL TENANT LOUNGE
W/ OUTDOOR PATIO



CONFERENCE
CENTER



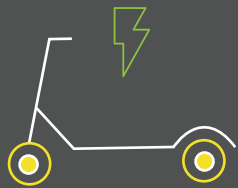
FREE COMMON SPACE WIFI
INDOORS + OUTDOORS



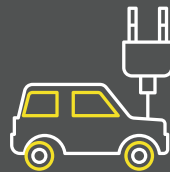
ON-SITE
PARKING



INDOOR BIKE
STORAGE



SCOOTER
CHARGING STATION



CAR
CHARGING STATION



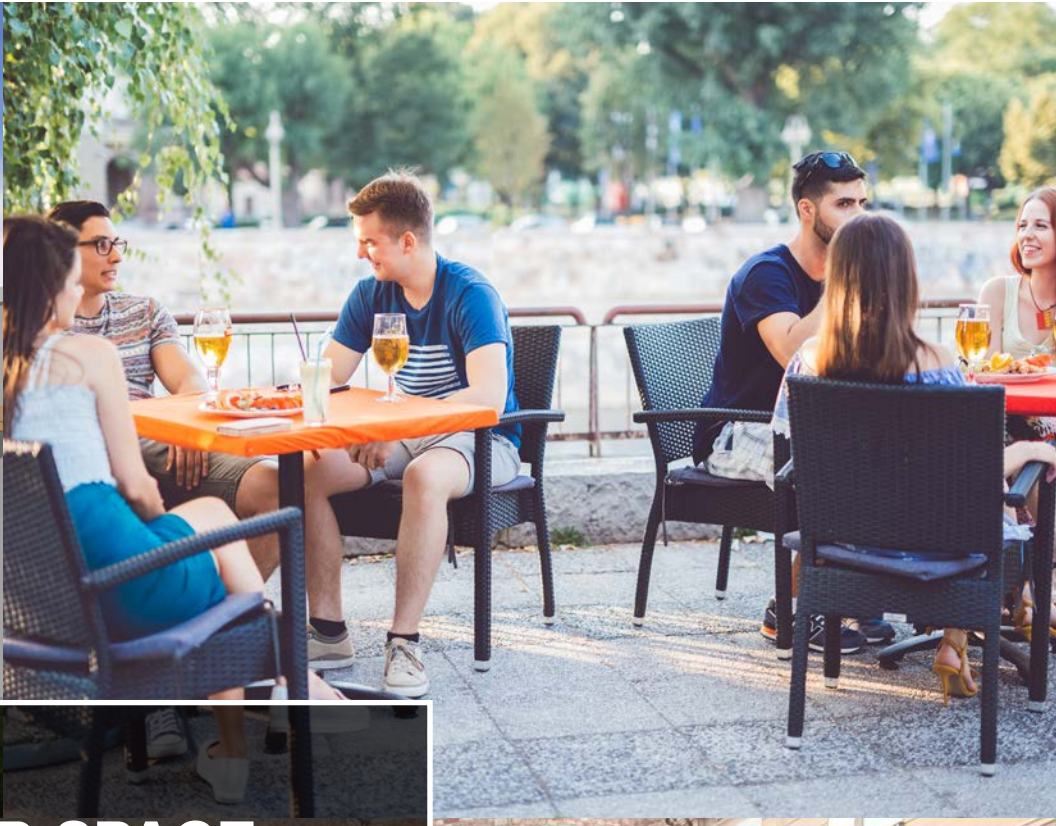
ROCKET
FIBER



SHARED
KITCHEN



1 BLOCK OFF
JEFFERSON AVENUE



OUTDOOR SPACE





GRATIOT AVE

WOODWARD AVENUE

E. JEFFERSON AVE

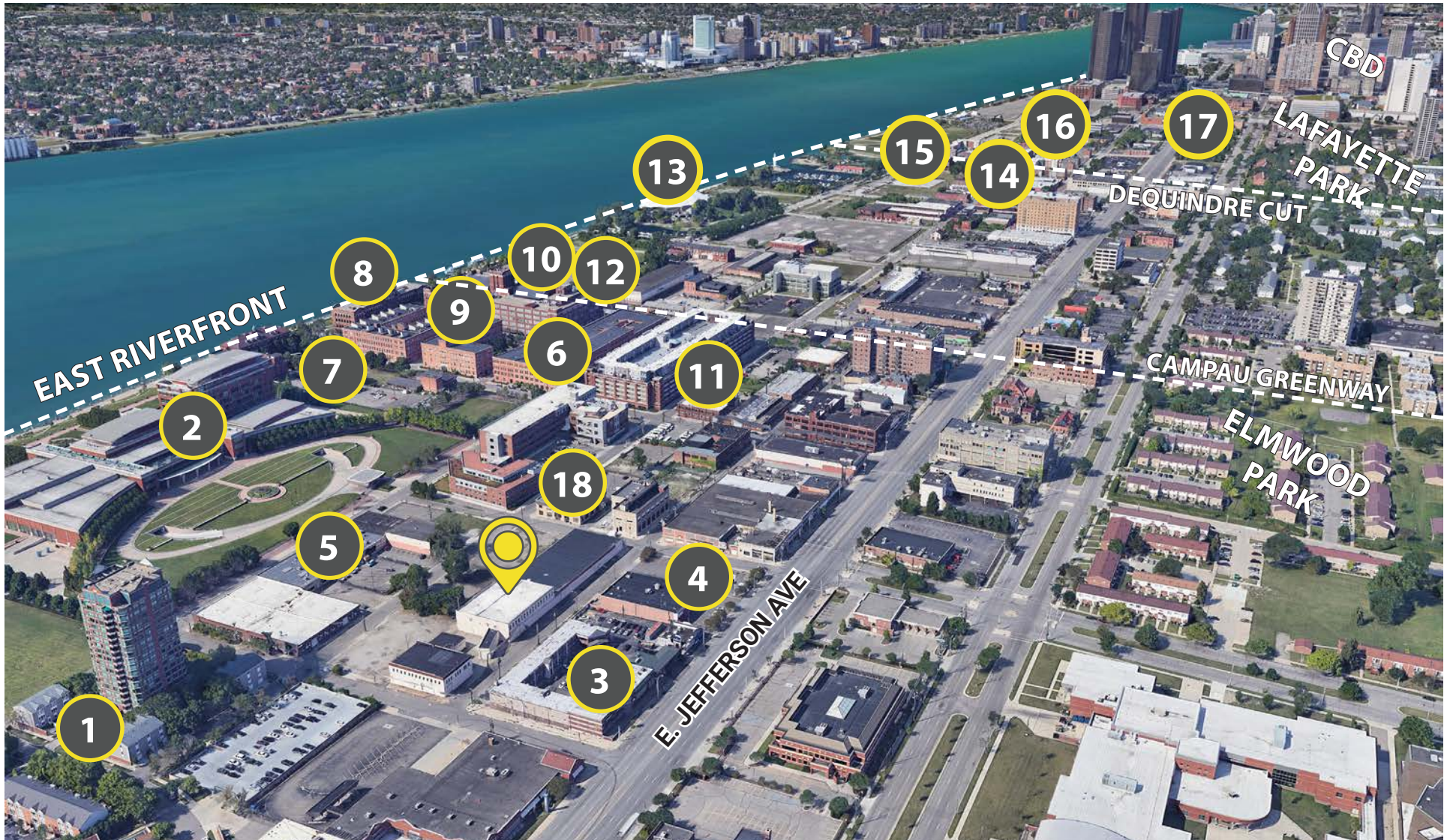
GRAND RIVER AVE

MICHIGAN AVE



**CLOSE TO
DOWNTOWN**
AND SURROUNDING
NEIGHBORHOODS

AROUND THE NEIGHBORHOOD



- | | | | | | |
|--|--------------------------------|--|--------------------------------------|--|--|
| 1 Harbortown (residential & retail) | 4 CVS | 7 Roberts RiverWalk Hotel and Residence | 10 Stroh River Place (office) | 13 Aretha Franklin Park | 16 Orleans Landing (residential & retail) |
| 2 UAW-GM Center for Human Resources | 5 Enterprise Rent-A-Car | 8 Talon Centre (office) | 11 Detroit Denim Company | 14 Elevator Building (creative office building) | 17 Meijer Site (under construction) |
| 3 Stay Inn and Suites Detroit | 6 Andrews Bar | 9 River Place Lofts | 12 Atwater Brewery | 15 Outdoor Adventure Center | 18 UPS Store |

CONTACT US



DAN GALLAGHER | +1 313.209.4112 | DAN.GALLAGHER@AVISONYOUNG.COM