

220

HUMBOLDT COURT

SUNNYVALE, CA | ±50,112 SF FOR LEASE



±5/1000 PARKING + FULL HEIGHT CUBICLES IN PLACE

Gregory M Davies
Senior Director
gregory.davies@cushwake.com
+1 408 615 3484
LIC. 01362233

Kelly Yoder
Director
kelly.yoder@cushwake.com
+1 408 615 3427
LIC. 01821117

Steve Horton
Executive Vice Chairman
steve.horton@cushwake.com
+1 408 615 3412
LIC. 001127340

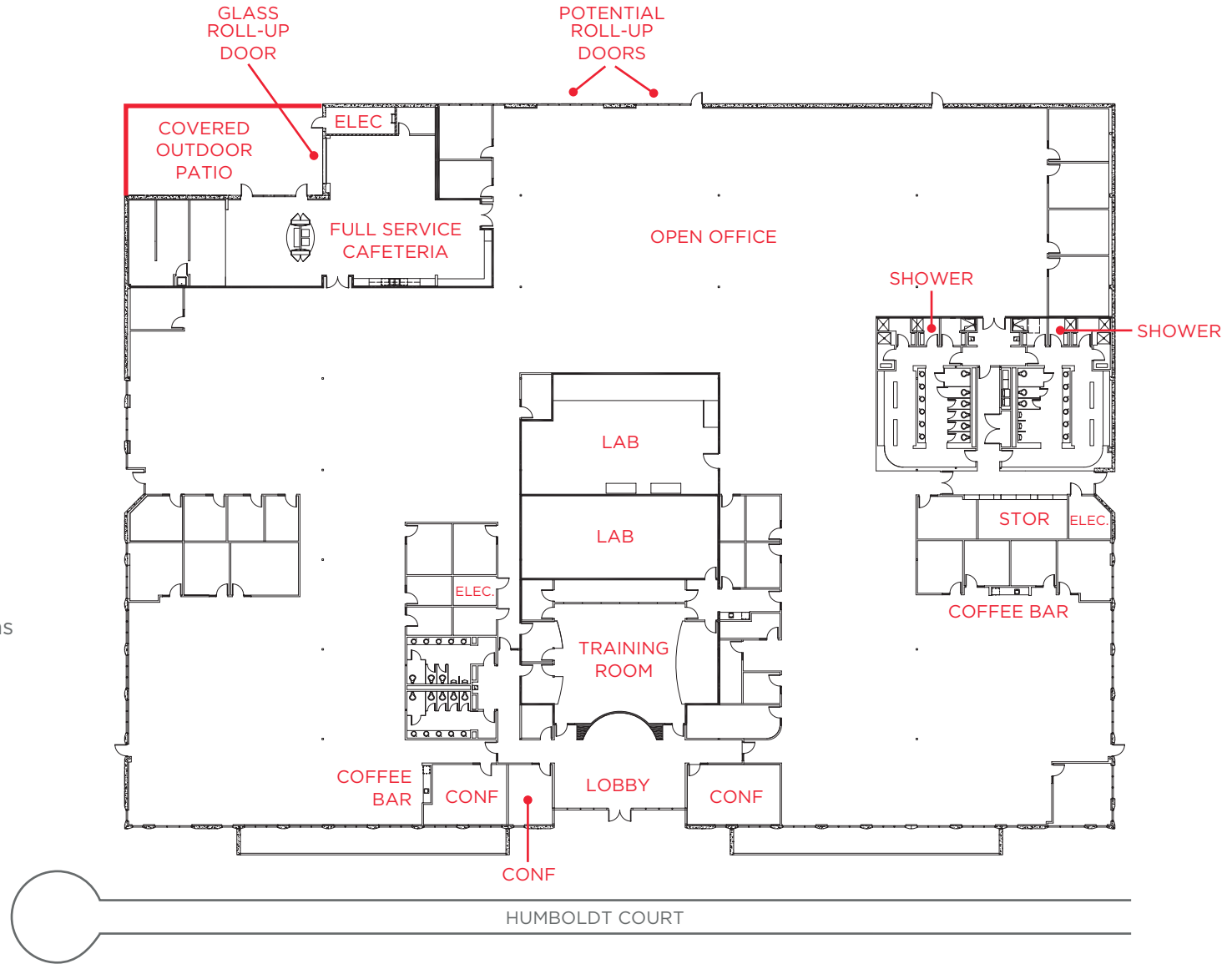




HUMBOLDT COURT

HIGHLIGHTS

- ±50,112 SF Office/R&D Freestanding Building
- ±5/1,000 Parking
- Full Height Cubicles in Place (5'+)
- ±2,800 SF Lab / Data Center with 70 Tons of Dedicated HVAC
- Full Service Cafeteria
- Skylights Throughout
- Fiber Optic Service Infrastructure
- Roll Up Door Potential
- Showers & Lockers
- 8 Minute Walk to VTA Light Rail Station (Borregas) with Connections to Caltrain Baby Bullet Service (Downtown Mountain View)





HUMBOLDT COURT

PHOTOS





HUMBOLDT COURT

AMENITIES & TRANSPORTATION



8 MINUTE WALK TO BORREGAS LIGHT RAIL STATION



HUMBOLDT COURT

SUNNYVALE, CA | ±50,112 SF FOR LEASE

Gregory M Davies

Senior Director
gregory.davies@cushwake.com
+1 408 615 3484
LIC. 01362233

Kelly Yoder

Director
kelly.yoder@cushwake.com
+1 408 615 3427
LIC. 01821117

Steve Horton

Executive Vice Chairman
steve.horton@cushwake.com
+1 408 615 3412
LIC. 001127340

