



OFFICE

# For Sublease



## 110 Miller Avenue, Ann Arbor, MI

<b>Property Name:</b>	Telemus
<b>Available Sq.Ft.:</b>	9,000
<b>Min. Contiguous:</b>	2,000
<b>Max. Contiguous:</b>	9,000
<b>Building Class:</b>	A
<b>Rental Rate:</b>	\$19.95 G + E
<b>Total Taxes:</b>	N/A
<b>Year Built:</b>	1991
<b>Total Sq. Ft.:</b>	34,365
<b>No. of Floors:</b>	4
<b>Floor Plate:</b>	10,000
<b>Total Parking:</b>	38 - On-Site



**Comments:** Sublease thru May 31, 2014.

For additional information, contact:

Jay Chavey, (248) 948-4196  
jchavey@signatureassociates.com



One Towne Square, Suite 1200 - Southfield, Michigan 48076  
www.signatureassociates.com

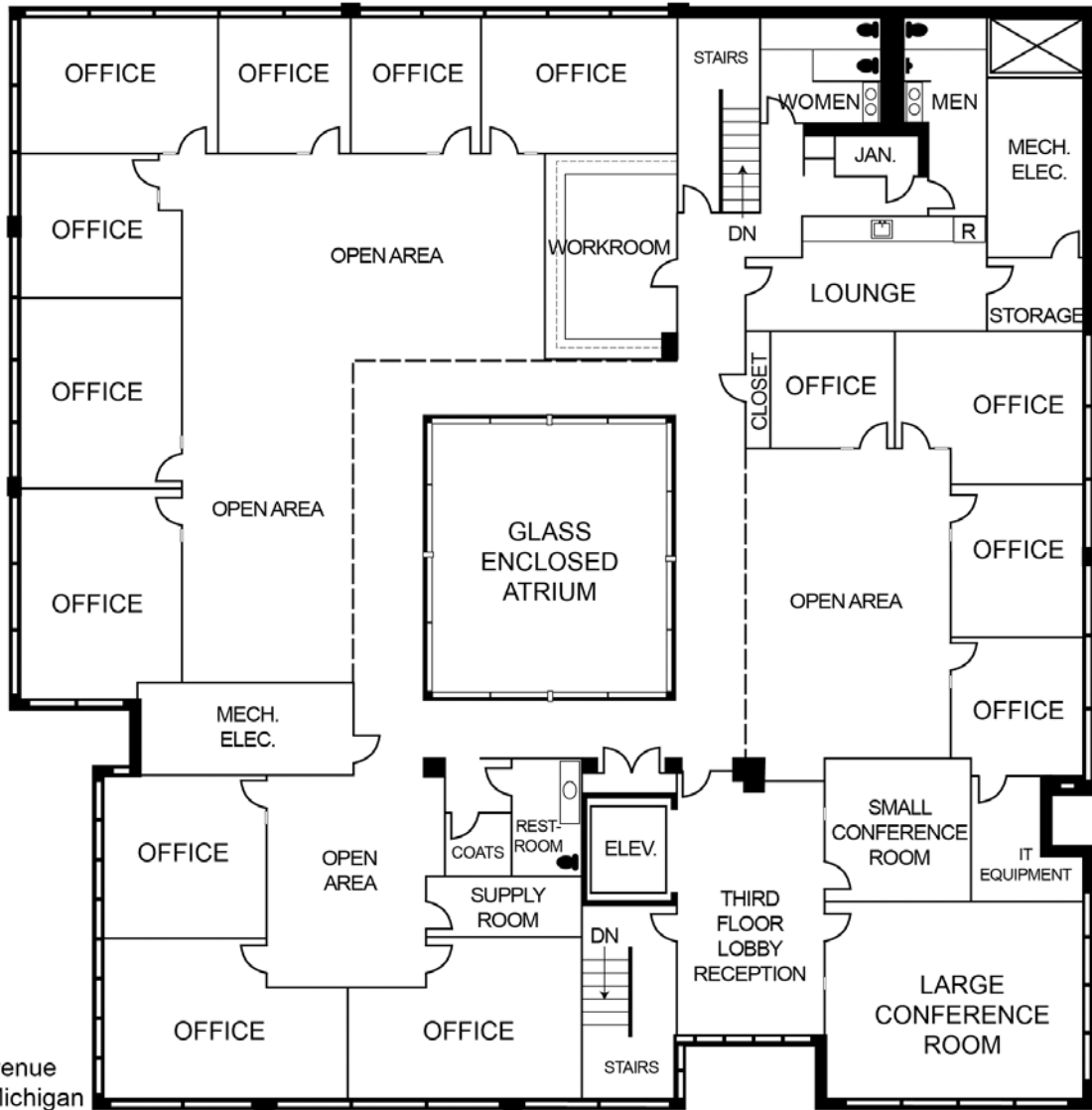


OFFICE

# For Sublease

110 Miller Avenue, Ann Arbor, MI

## Floor Plan



110 Miller Avenue  
Ann Arbor, Michigan