



**CUSHMAN & WAKEFIELD**

FOR LEASE

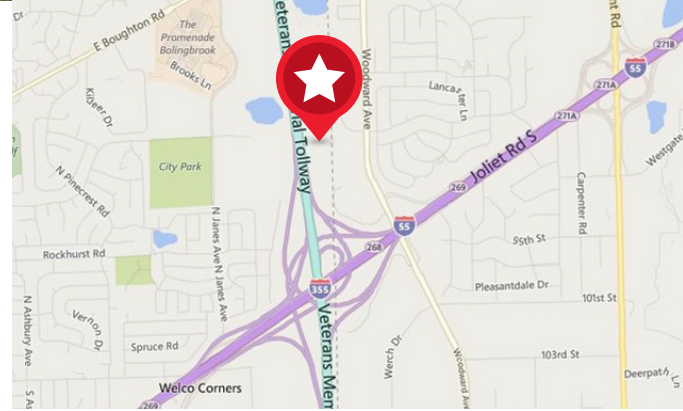
**9040 Murphy Road**  
Woodridge, Illinois



**62,500 SF Available For Lease**  
**Lease Rate: Subject to Offer**

**Property Highlights**

|                        |   |
|------------------------|---|
| <b>Building Size:</b>  | 151,087 SF  |
| <b>Available Size:</b> | 62,500 SF   |
| <b>Office Size:</b>    | To-Suit   |
| <b>Clear Height:</b>   | 32'   |
| <b>Loading:</b>        | 16 Exterior Docks<br>1 Drive-In-Door  |
| <b>Car Parking:</b>    | 58 Stalls   |
| <b>Power:</b>          | 600 Amps  |
| <b>Comments:</b>       | <ul style="list-style-type: none"> <li>• New Construction, Built 2019</li> <li>• Unencumbered Visibility on I-355</li> <li>• Located in Union Pointe Business Park</li> </ul> |



**For more information, please contact:**

**Jason West, SIOR**  
Vice Chair  
847.518.3210  
jason.west@cushwake.com

**Doug Pilcher**  
Senior Director  
847.518.3285  
doug.pilcher@cushwake.com

9500 W. Bryn Mawr, Suite 600  
Rosemont, Illinois 60018  
main 847.518.9100  
fax 847.518.9116  
**cushmanwakefield.com**

Cushman & Wakefield Copyright 2015. No warranty or representation, express or implied, is made to the accuracy or completeness of the information contained herein, and same is submitted subject to errors, omissions, change of price, rental or other conditions, withdrawal without notice, and to any special listing conditions imposed by the property owner(s). As applicable, we make no representation as to the condition of the property (or properties) in question.





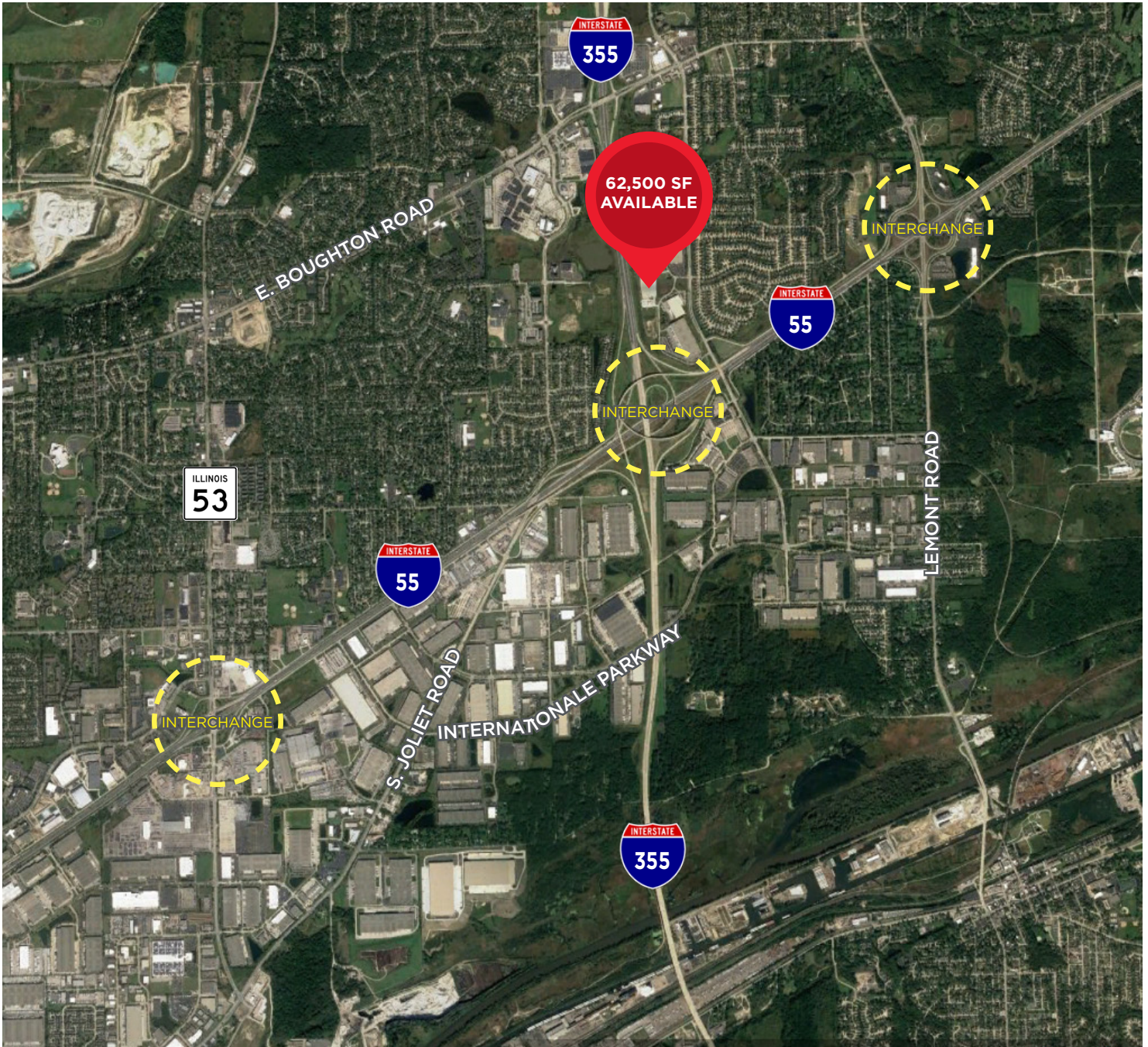
**CUSHMAN &  
WAKEFIELD**

FOR LEASE

**9040 Murphy Road**

Woodridge, Illinois

**Aerial**



**Jason West, SIOR**  
Vice Chair  
847 518 3210  
jason.west@cushwake.com

**Doug Pilcher**  
Senior Director  
847 518 3285  
doug.pilcher@cushwake.com

9500 W. Bryn Mawr, Suite 600  
Rosemont, Illinois 60018  
main 847 518 9100  
fax 847 518 9116  
**cushmanwakefield.com**