

152 HIGHWAY & N.E. BARRY ROAD

KANSAS CITY, MISSOURI 64156



Kessinger Hunter

COMMERCIAL REAL ESTATE
INDEPENDENTLY OWNED AND OPERATED

LAND FOR SALE 54.4± ACRES

Sale Price: \$2,549,300 or \$46,862/Acre



PROPERTY FEATURES

- Fastest growing sector of KC Metro
- 45,000+ cars per day on 152 Highway
- All utilities to site
- Great access for commuters
- Rolling, elevated topography for views
- Blocks from Maple Woods Community College
- <https://www.maplewoodsandbarryland.com>
- R-80 Zoning (feasible to rezone)
- Recent apartment developments outperformed absorption forecast
- I-435 is one mile east
- US-69 is .75 miles west
- High performing North Kansas City Schools (Staley HS zone)

For more information, please contact:

ANDY TAYLOR

Industrial Brokerage

816.936.8503

ataylor@kessingerhunter.com

KESSINGER/HUNTER & COMPANY, LC

2600 Grand Boulevard, Suite 700

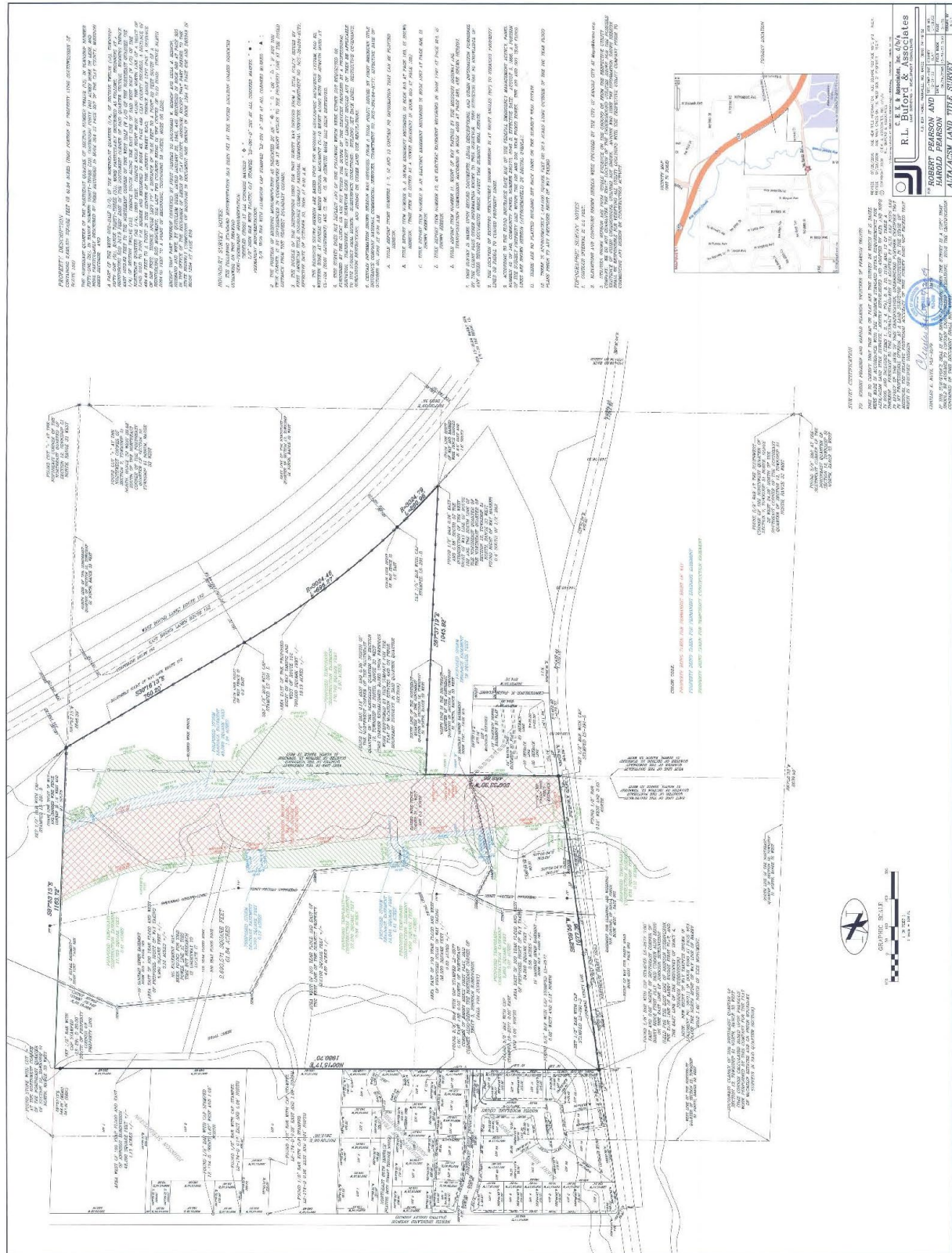
Kansas City, MO 64108

816.842.2690

www.kessingerhunter.com

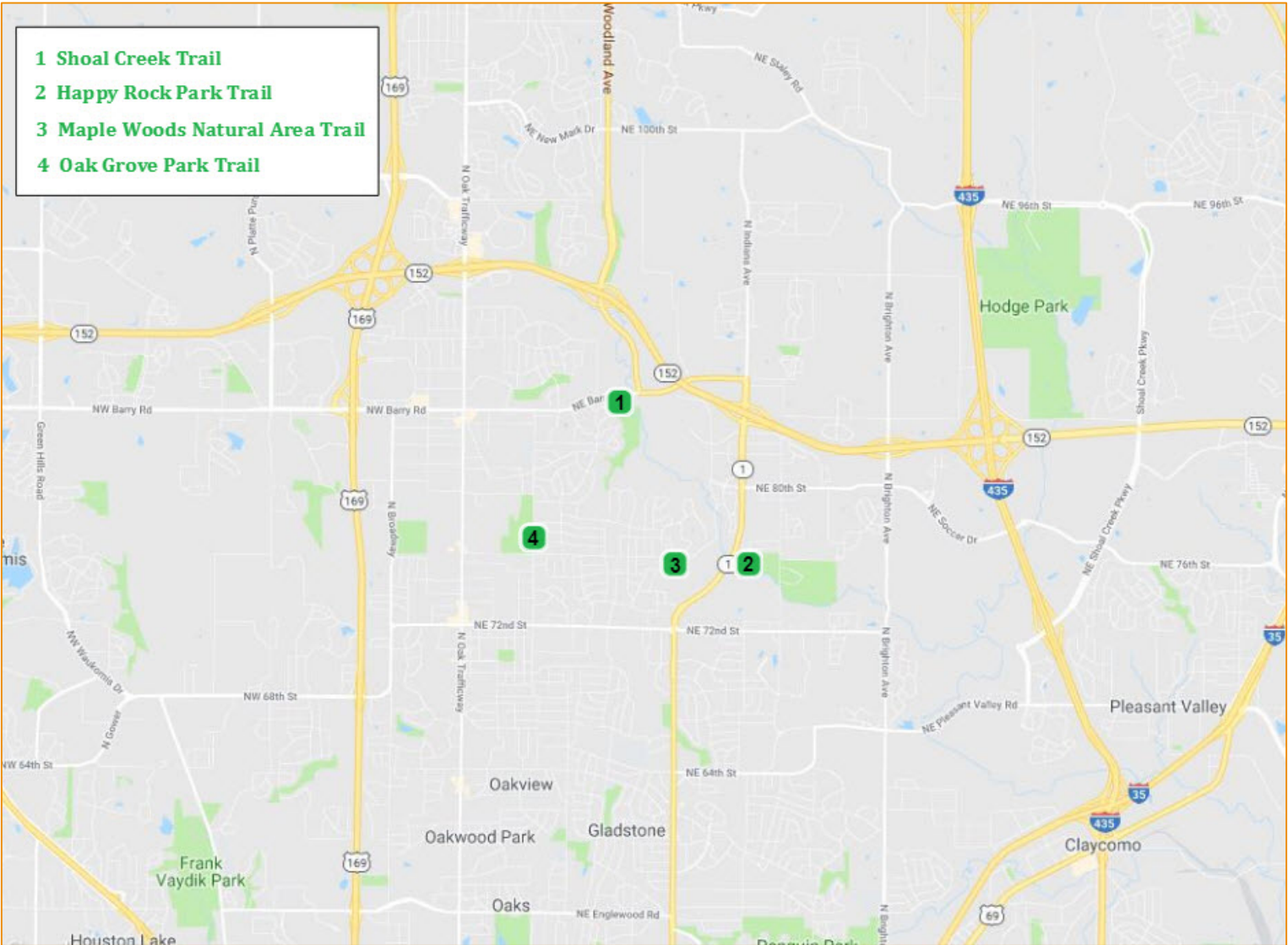
Information subject to verification and no liability for errors or omissions is assumed. Price subject to change. Updated 10/11/18.

To unsubscribe, please click on the link: khlistings@kessingerhunter.com



152 HIGHWAY & N.E. BARRY ROAD, KANSAS CITY, MISSOURI 64156

Land for Sale | 54.4± Acres



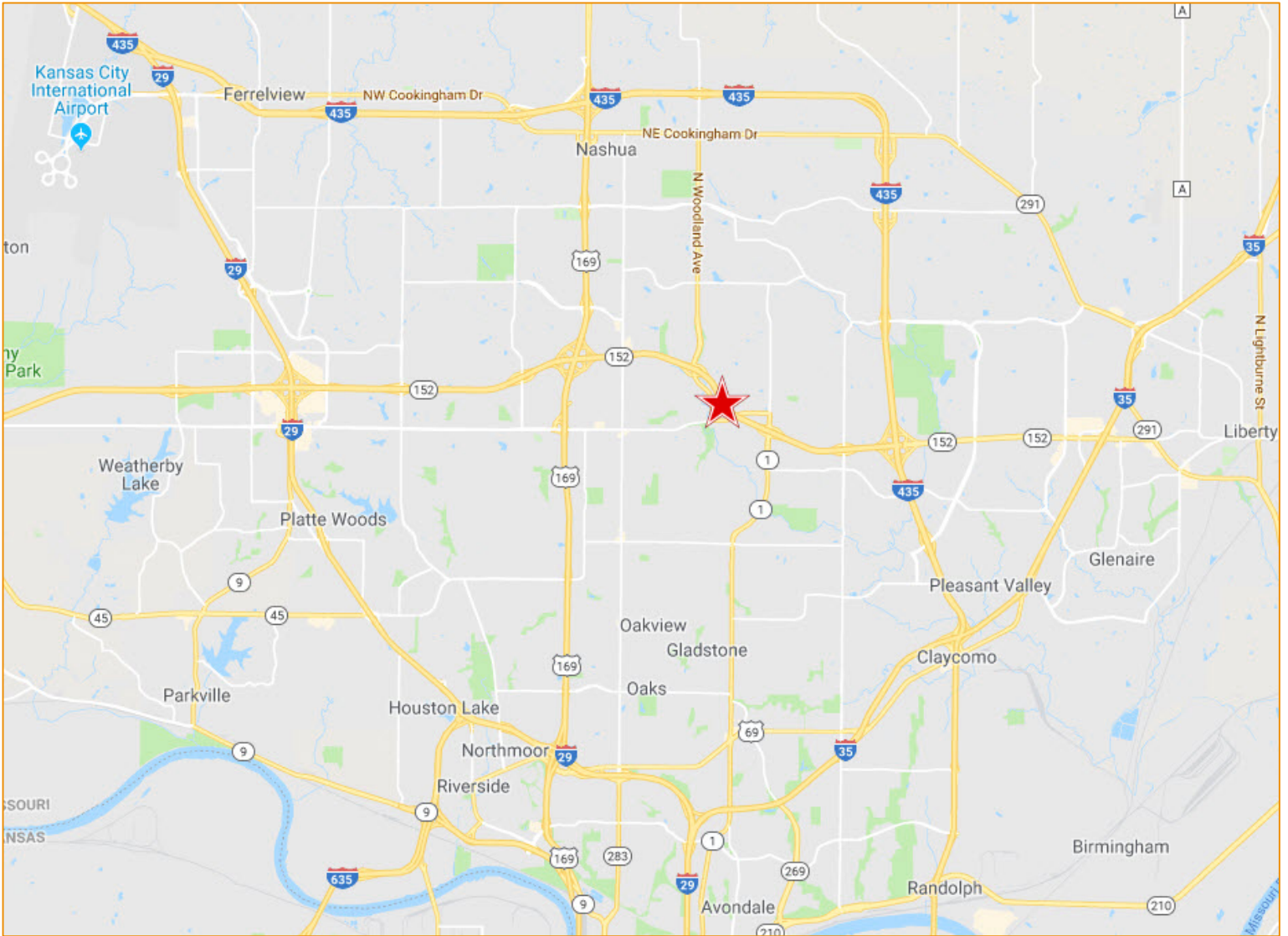
	1 mile	3 miles	5 miles
2018 Total Population	5,491	52,366	134,896
2018-2023 Annual Rate	1.43%	1.41%	1.33%
2018 Total Daytime Population	3,286	34,767	89,179
Median Household Income (2018)	\$78,504	\$65,030	\$68,698
2018 Employed Population 16+ White Collar	70.9%	66.4%	66.7%

152 Highway & N.E. Barry Road, Kansas City, Missouri 64156

Land for Sale | 54.4± Acres

KH

EST. 1879



Liberty

5 miles east

I-29 & Barry Road

5 miles west

Downtown KCMO

10 miles south

For more information, please contact:

ANDY TAYLOR

Industrial Brokerage

816.936.8503

ataylor@kessingerhunter.com

Information subject to verification and no liability for errors or omissions is assumed. Price subject to change.

To unsubscribe, please click on the link: khlistings@kessingerhunter.com