

FOR LEASE

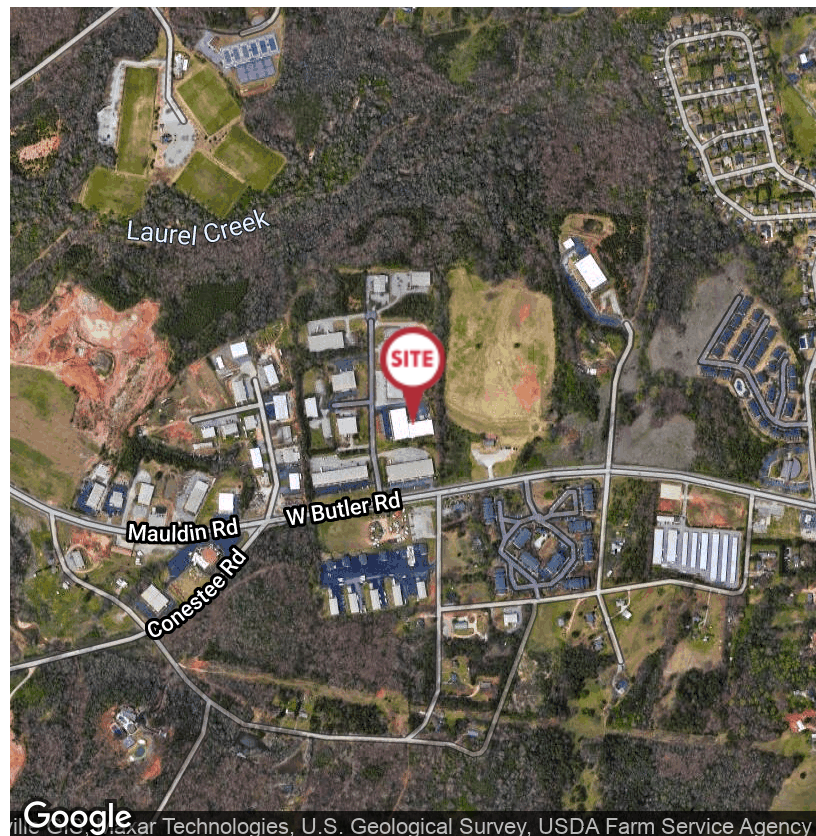
12 Park Place Ct. Greenville, SC 29607

NAI Earle Furman



Industrial | ±24,000 SF

- Approximately ±2,000 sf of office space
- 17' to 21' ceiling heights
- (2) 9'x10' Dock-High doors
- 12'x12' Drive-In door
- High Bay lighting
- Suspended gas heaters
- Exhaust fans in warehouse
- 208Y/120V 3Phase 4Wire 600 Amps power
- Ample parking
- Lease rate: \$6.00/SF NNN



Google Earth Technologies, U.S. Geological Survey, USDA Farm Service Agency



Hunter Garrett, CCIM, SIOR
O: +1 864 232 5934
C: +1 864 505 6813
hgarrett@naiearlefurman.com



John Staunton, SIOR
O: +1 864 232 5990
C: +1 864 905 1112
johnstaunton@naiearlefurman.com

No Warranty Or Representation, Express Or Implied, Is Made As To The Accuracy Of The Information Contained Herein, And The Same Is Submitted Subject To Errors, Omissions, Change Of Price, Rental Or Other Conditions Prior Sale, Lease Or Financing, Or Withdrawal Without Notice, And Of Any Special Listing Conditions Imposed By Our Principals. No Warranties Or Representations Are Made As To The Condition Of The Property Or Any Hazards Contained Therein Are Any To Be Implied.



101 E Washington St
Greenville, SC 29601
naief.com

FOR LEASE

12 Park Place Ct. Greenville, SC 29607



✉ Hunter Garrett, CCIM, SIOR
O: +1 864 232 5934
C: +1 864 505 6813
hgarrett@naiearlefurman.com

✉ John Staunton, SIOR
O: +1 864 232 5990
C: +1 864 905 1112
johnstaunton@naiearlefurman.com

No Warranty Or Representation, Express Or Implied, Is Made As To The Accuracy Of The Information Contained Herein, And The Same Is Submitted Subject To Errors, Omissions, Change Of Price, Rental Or Other Conditions, Prior Sale, Lease Or Financing, Or Withdrawal Without Notice, And Of Any Special Listing Conditions Imposed By Our Principals. No Warranties Or Representations Are Made As To The Condition Of This Property Or Any Hazards Contained Therein Are Any To Be Implied.

NAI Earle Furman

FOR LEASE

12 Park Place Ct. Greenville, SC 29607



✉ Hunter Garrett, CCIM, SIOR
O: +1 864 232 5934
C: +1 864 505 6813
hgarrett@naiearlefurman.com

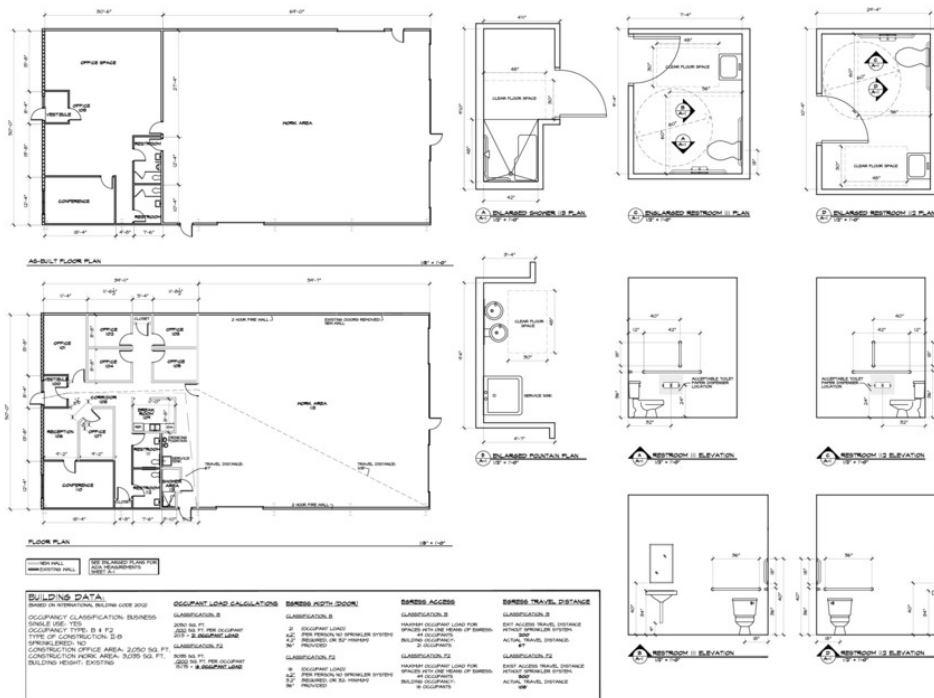
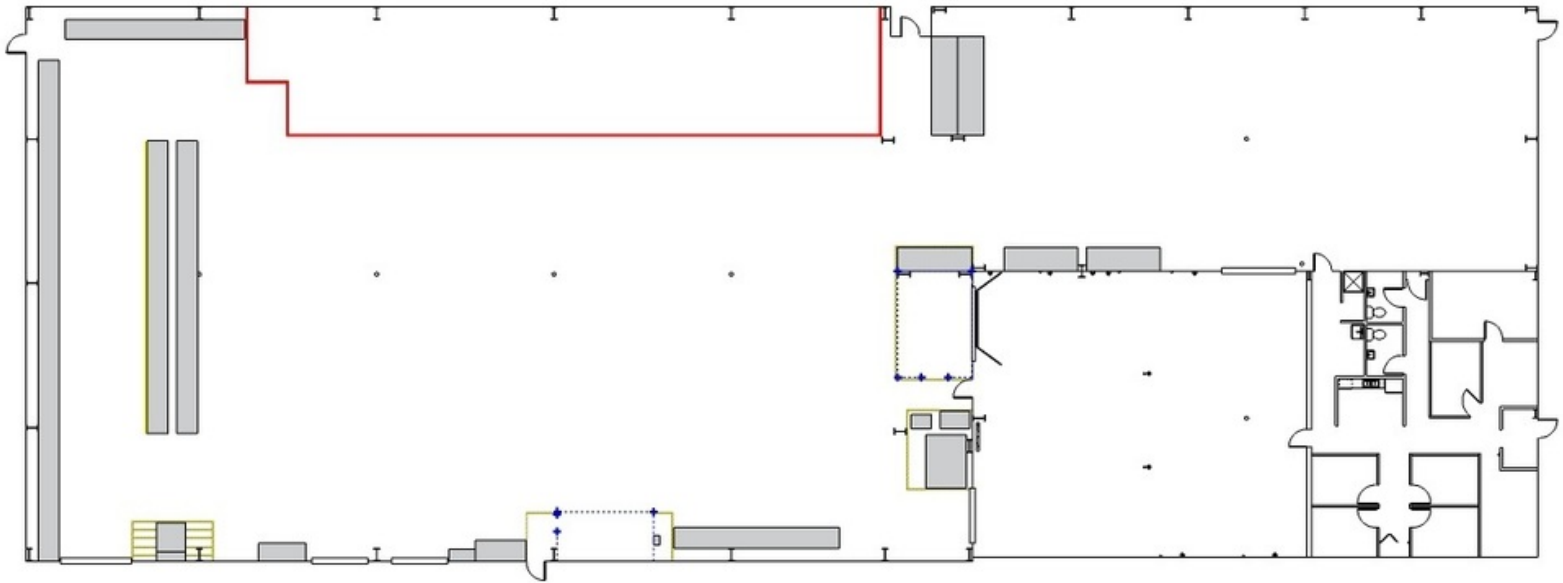
✉ John Staunton, SIOR
O: +1 864 232 5990
C: +1 864 905 1112
johnstaunton@naiearlefurman.com

No Warranty Or Representation, Express Or Implied, Is Made As To The Accuracy Of The Information Contained Herein, And The Same Is Submitted Subject To Errors, Omissions, Change Of Price, Rental Or Other Conditions, Prior Sale, Lease Or Financing, Or Withdrawal Without Notice, And Of Any Special Listing Conditions Imposed By Our Principals. No Warranties Or Representations Are Made As To The Condition Of This Property Or Any Hazards Contained Therein Are Any To Be Implied.

NAI Earle Furman

FOR LEASE

12 Park Place Ct. Greenville, SC 29607



WELHAM ARCHITECTS
 302 S WALKER ST #4
 GREENVILLE SC 29602
 (864) 271-7600
 FAX: (864) 271-0900

REVISIONS AND ADDITIONS FOR:
 J-F J ROSE ENTERPRISES, L.L.C.
 12 PARK PLACE COURT
 GREENVILLE, SOUTH CAROLINA

DRAWING TITLE:
 KITCHEN & BATH
 12 PARK PLACE COURT
 GREENVILLE, SOUTH CAROLINA

PROJECT NO. 1014
 DRAWN BY: JGG
 PLOT DATE: 4/10/14
 DESIGNED BY: JGG
 REVISIONS:

SCALE:
 1/8" = 1'-0"

BUILDING DATA	OCCUPANT LOAD CALCULATIONS	EMERGENCY EXIT DOOR	EMERGENCY ACCESS	EMERGENCY TRAVEL DISTANCE
BASED ON INTERNATIONAL BUILDING CODE 2012 OCCUPANCY CLASSIFICATION: BUSINESS CODED USE: CE CODED TYPE: B & F-2 TYPE OF CONSTRUCTION: I-B FIRE-RESISTED: NO CONSTRUCTION OFFICE AREA: 2,000 SQ. FT. CONSTRUCTION FLOOR AREA: 4,000 SQ. FT. BUILDING HEIGHT: EXISTING	CLASSIFICATION: B 1. OCCUPANT LOAD: 50/SQ. FT. 2. PER PERSONAL OPERATING SYSTEM: 100/SQ. FT. 3. PROVIDED OR BY OTHER: 100/SQ. FT.	CLASSIFICATION: B 1. OCCUPANT LOAD: 50/SQ. FT. 2. PER PERSONAL OPERATING SYSTEM: 100/SQ. FT. 3. PROVIDED OR BY OTHER: 100/SQ. FT.	CLASSIFICATION: B 1. OCCUPANT LOAD: 50/SQ. FT. 2. PER PERSONAL OPERATING SYSTEM: 100/SQ. FT. 3. PROVIDED OR BY OTHER: 100/SQ. FT.	CLASSIFICATION: B 1. OCCUPANT TRAVEL DISTANCE: 100 FT. 2. PER PERSONAL OPERATING SYSTEM: 100 FT. 3. PROVIDED OR BY OTHER: 100 FT.

✉ Hunter Garrett, CCIM, SIOR
 O: +1 864 232 5934
 C: +1 864 505 6813
 hgarrett@naiearlefurman.com

✉ John Staunton, SIOR
 O: +1 864 232 5990
 C: +1 864 905 1112
 johnstaunton@naiearlefurman.com

No Warranty or Representation, Express or Implied, is Made as to the Accuracy of the Information Contained Herein, and the Same is Submitted Subject to Errors, Omissions, Change of Price, Rental or Other Conditions, Prior Sale, Lease or Financing, or Withdrawal Without Notice, and of Any Special Listing Conditions Imposed by Our Principals. No Warranties or Representations are Made as to the Condition of This Property or Any Hazards Contained Therein or Any To Be Implied.

