

15492 BEECH DALY ROAD
REDFORD, MICHIGAN

RETAIL FOR SALE
13,560 Square Feet Available



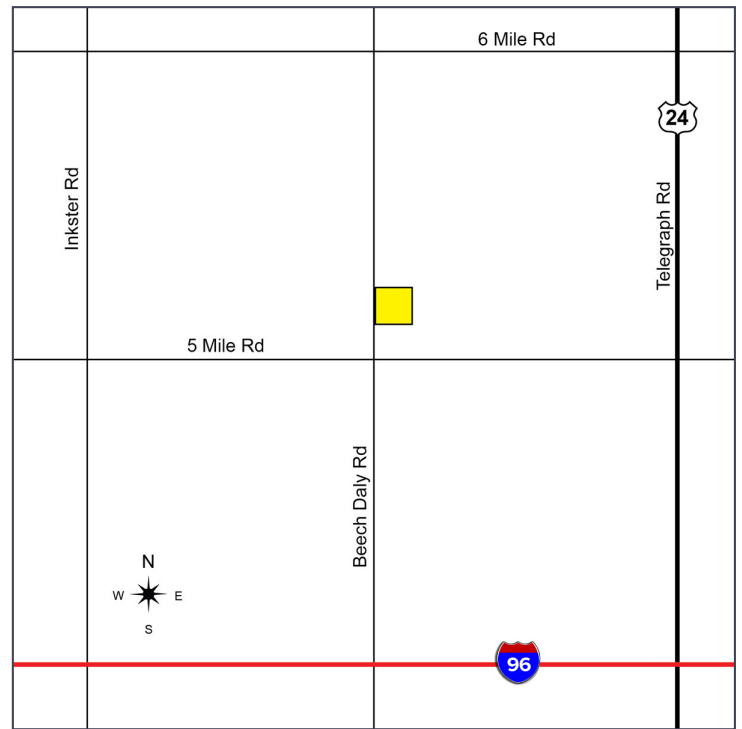
**SIGNATURE
ASSOCIATES**
KNOW SIGNATURE | KNOW RESULTS



PROPERTY FEATURES

- 13,560 available square feet
- 14' ceiling height
- (1) 10x10 overhead door
- Zoned C-2
- Retrofit in 1997
- 82 parking spaces
- Sale Price: \$525,000 (\$38.72/sq.ft.)

Comments: This well located property is ideal for entertainment, recreation activities or redevelopment. Sale does not include equipment or liquor license.



For more information, please contact:

STEVE GORDON
(248) 948 0101
sgordon@signatureassociates.com

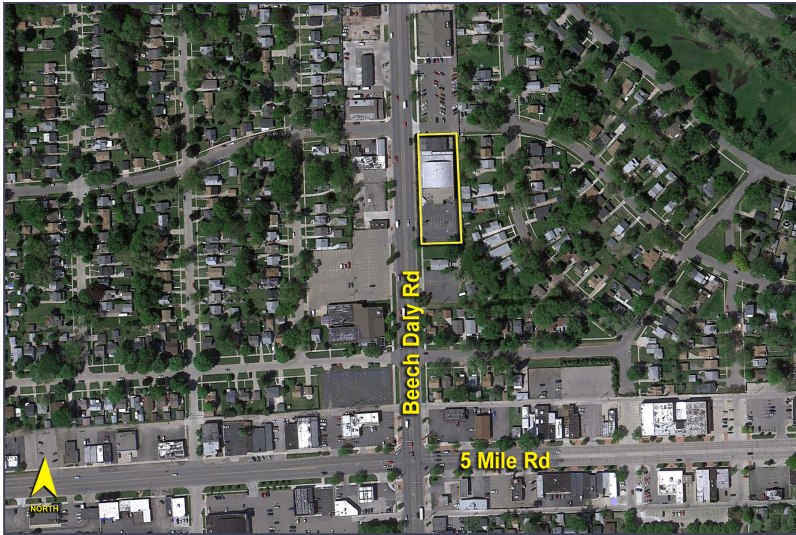
GARY STEPHENS
(248) 948 0104
gstephens@signatureassociates.com

SIGNATURE ASSOCIATES
One Towne Square, Suite 1200
Southfield, MI 48076
www.signatureassociates.com

15492 Beech Daly Street – Redford, Michigan

Retail For Sale

13,560
Square Feet
AVAILABLE

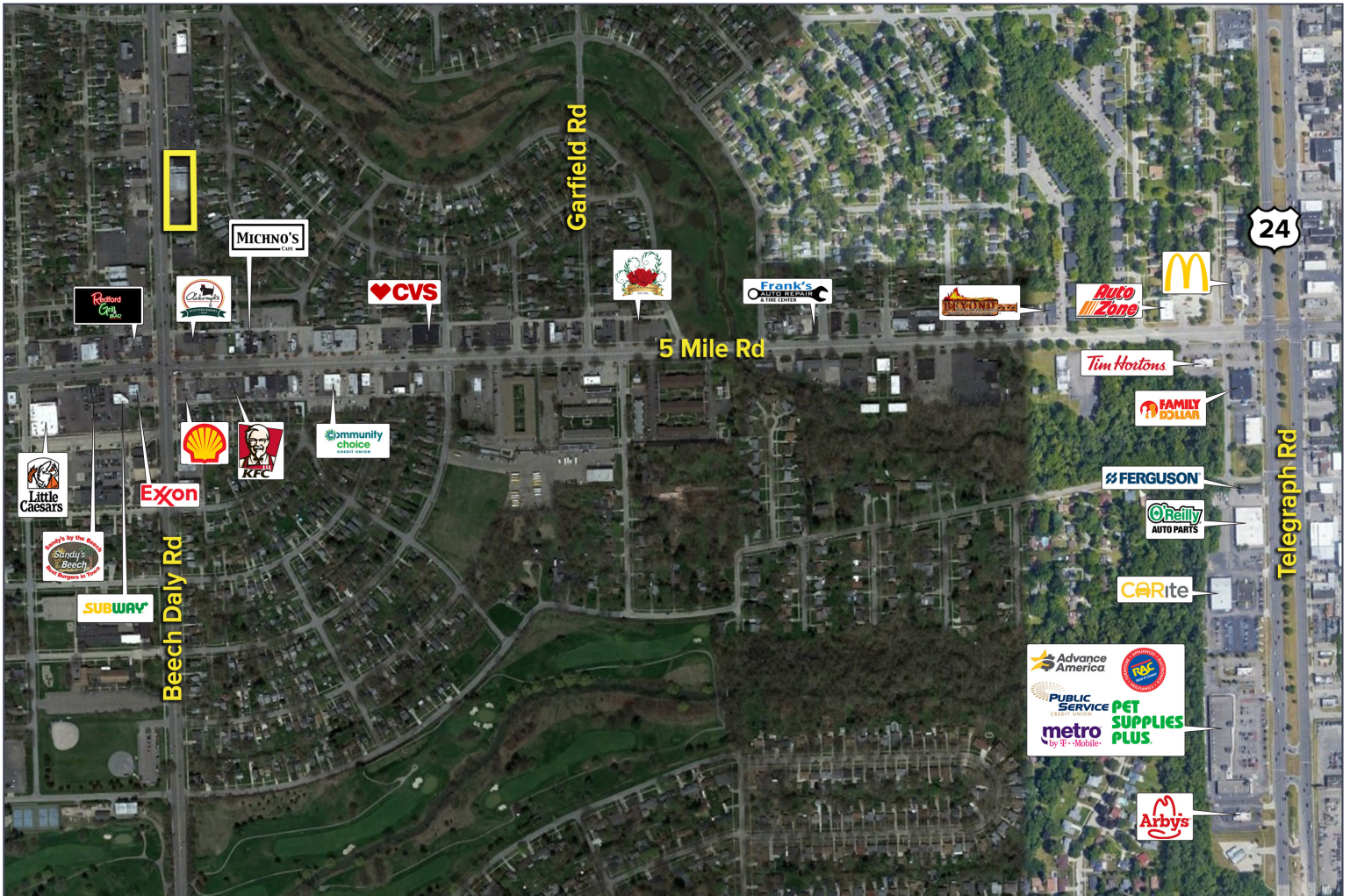


DEMOGRAPHICS

	POPULATION	MED. HH INCOME
1 MILE	10,755	\$59,135
3 MILE	102,240	\$51,797
5 MILE	292,193	\$59,293

TRAFFIC COUNTS (TWO-WAY)

10,755	Beech Daly Rd. & 5 Mile 2-Way
16,172	5 Mile Rd. W. of Beech Daly Rd. 2-Way
18,830	5 Mile Rd. E. of Beech Daly Rd. 2-Way



For more information, please contact:

STEVE GORDON
(248) 948 0101
sgordon@signatureassociates.com

GARY STEPHENS
(248) 948 0104
gstephens@signatureassociates.com

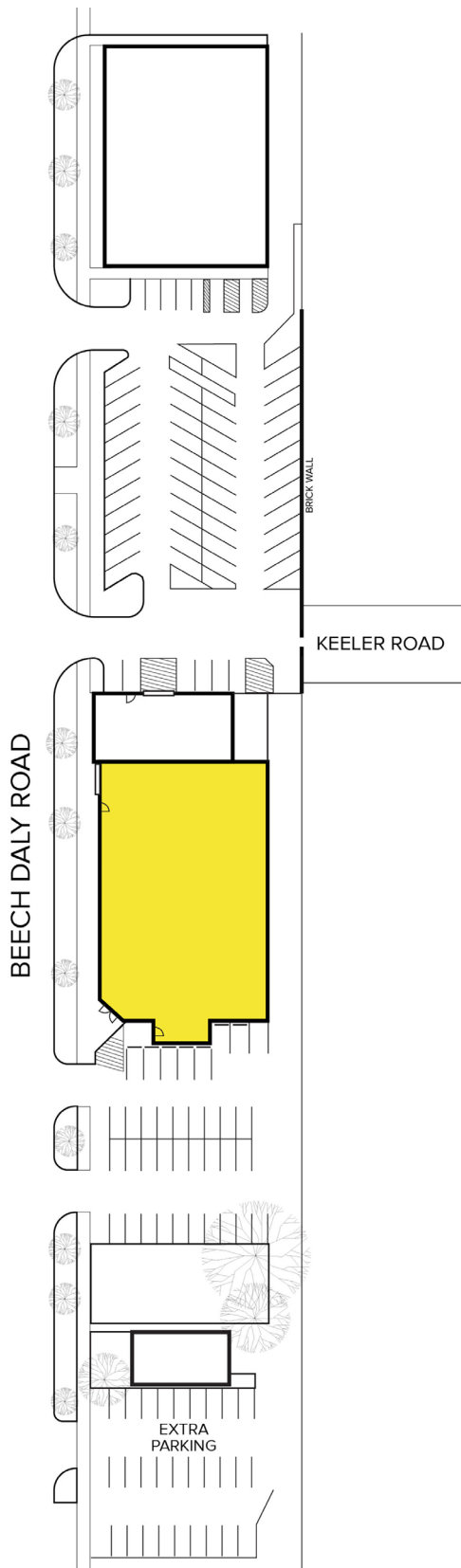
SIGNATURE ASSOCIATES
One Towne Square, Suite 1200
Southfield, MI 48076
www.signatureassociates.com

15492 Beech Daly Street – Redford, Michigan

Retail For Sale

13,560
Square Feet
AVAILABLE

Site Plan



For more information, please contact:

STEVE GORDON

(248) 948 0101

sgordon@signatureassociates.com

GARY STEPHENS

(248) 948 0104

gstephens@signatureassociates.com

SIGNATURE ASSOCIATES

One Towne Square, Suite 1200

Southfield, MI 48076

www.signatureassociates.com