

# VERSATILE SPACE ON BUSY COURSEY BLVD



## OFFERING SUMMARY

Available SF:	2,150 SF
Lease Rate:	\$2,000 per month (MG)
Lot Size:	0.21 Acres
Building Size:	2,150
Zoning:	Rural

## PROPERTY OVERVIEW

Located just 0.34 miles from S Sherwood Forest Blvd on Coursey Blvd, this versatile building is in a great location for a retail or commercial business. The 2,150 SF building was formerly used as a church building, and features a large open space that would be ideal for a retail space or showroom floor. The building also has a large kitchen, 2 restrooms, and 2 offices. Surrounded by a number of popular restaurants and businesses and only a 5-minute drive from I-12, this property is an excellent choice for your business.

## PROPERTY HIGHLIGHTS

- High Traffic Counts on Coursey Blvd
- 0.34 miles from S Sherwood Forest Blvd
- Versatile Space
- Large, Open Front Room
- 11 Parking Spaces

## VERSATILE SPACE ON BUSY COURSEY BLVD

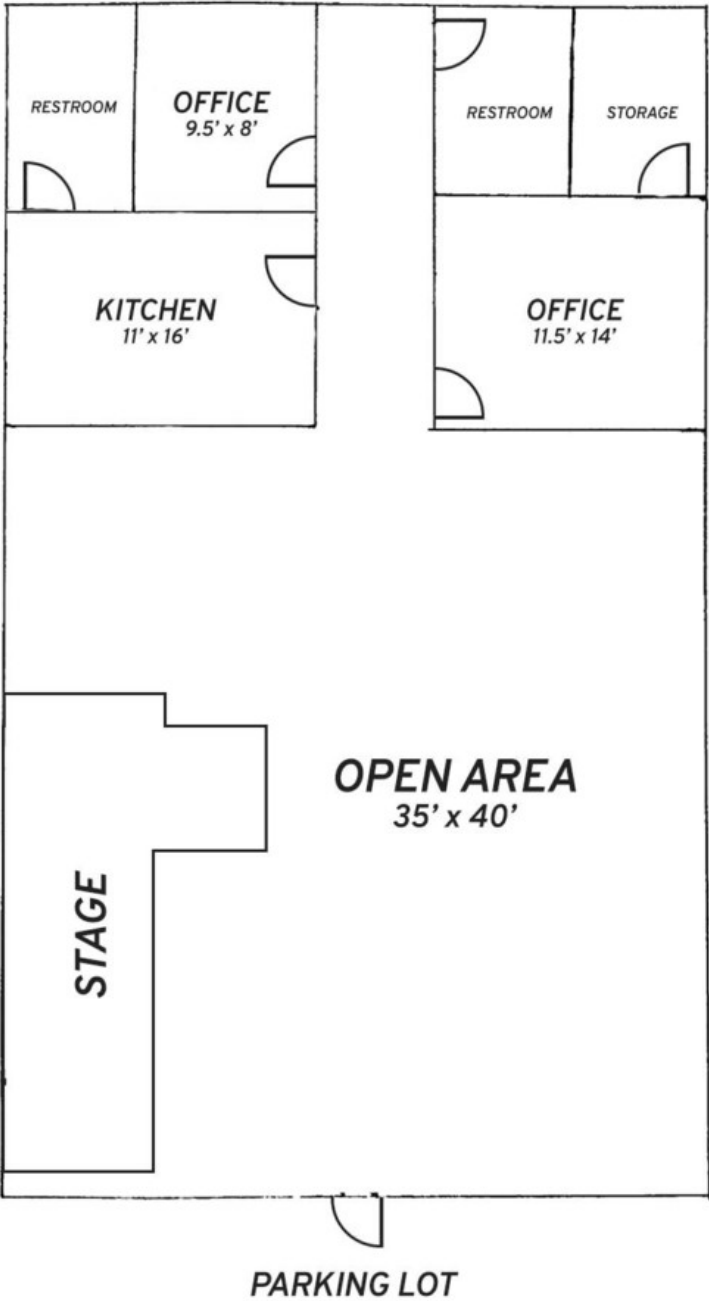


Mark Segalla (C) 225.505.4349 Mathew Laborde (C) 337.326.1368

 **ELIFIN** 800.895.9329 | elifinrealty.com  
640 Main St, Suite A, Baton Rouge, LA 70801

Broker of Record, Mathew Laborde; Licensed by the Louisiana Real Estate Commission and the Mississippi Real Estate Commission. This information has been secured from sources we believe to be reliable, but we make no representations or warranties, expressed or implied, as to the accuracy of the information. References to square footage or age are approximate. Buyer must verify the information and bears all risk for any inaccuracies.

# VERSATILE SPACE ON BUSY COURSEY BLVD



DIMENSIONS ARE APPROXIMATE

Mark Segalla (C) 225.505.4349 Mathew Laborde (C) 337.326.1368

 **ELIFIN** 800.895.9329 | elifinrealty.com  
640 Main St, Suite A, Baton Rouge, LA 70801

## VERSATILE SPACE ON BUSY COURSEY BLVD



Mark Segalla (C) 225.505.4349 Mathew Laborde (C) 337.326.1368

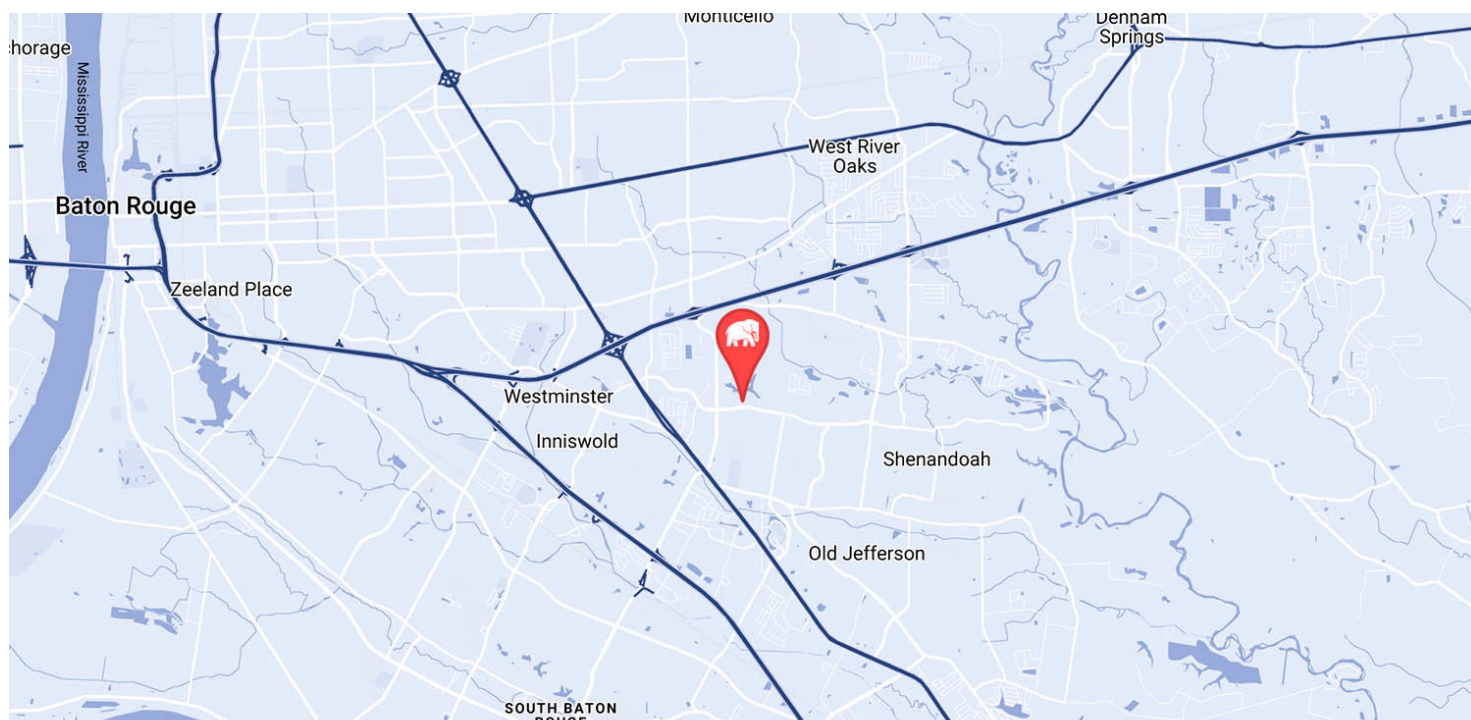


**ELIFIN**

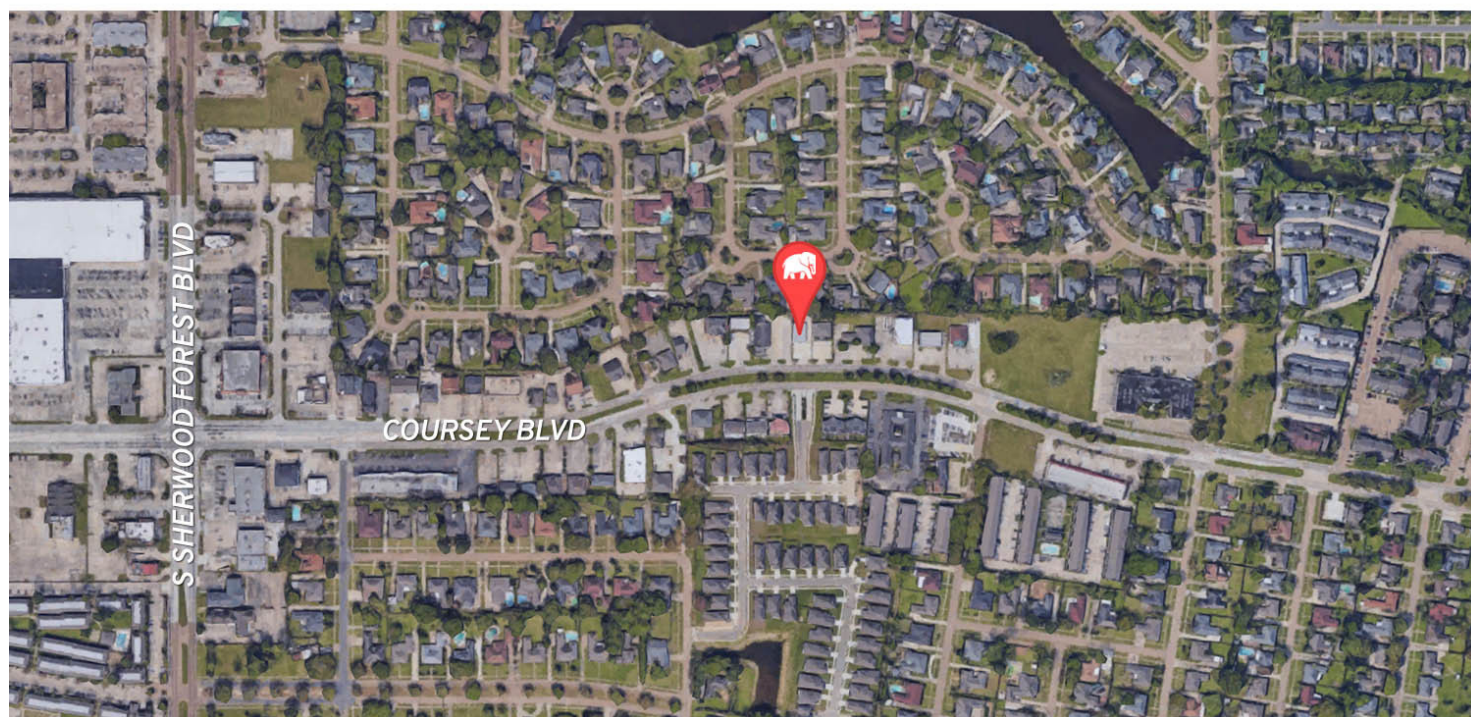
800.895.9329 | [elifinrealty.com](http://elifinrealty.com)  
640 Main St, Suite A, Baton Rouge, LA 70801

Broker of Record, Mathew Laborde; Licensed by the Louisiana Real Estate Commission and the Mississippi Real Estate Commission. This information has been secured from sources we believe to be reliable, but we make no representations or warranties, expressed or implied, as to the accuracy of the information. References to square footage or age are approximate. Buyer must verify the information and bears all risk for any inaccuracies.

## VERSATILE SPACE ON BUSY COURSEY BLVD



MAP DATA ©2019 GOOGLE



Mark Segalla (C) 225.505.4349 Mathew Laborde (C) 337.326.1368

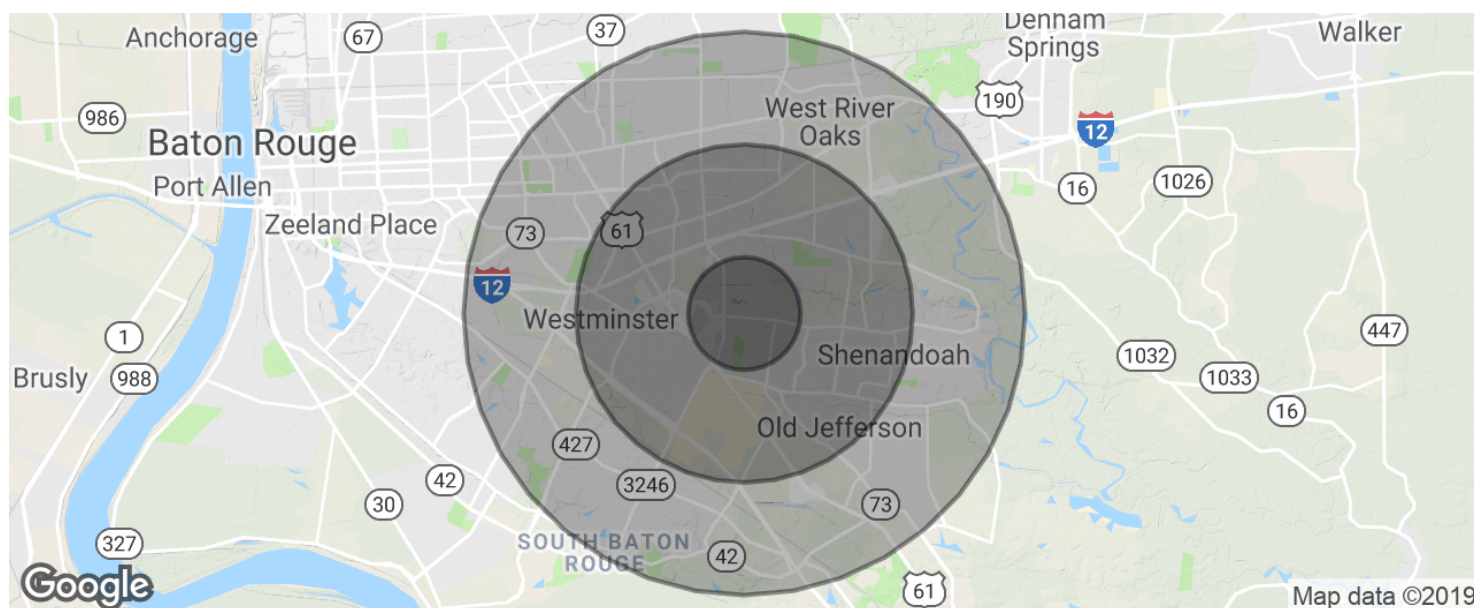


**ELIFIN**

800.895.9329 | elifinrealty.com  
640 Main St, Suite A, Baton Rouge, LA 70801

Broker of Record, Mathew Laborde; Licensed by the Louisiana Real Estate Commission and the Mississippi Real Estate Commission. This information has been secured from sources we believe to be reliable, but we make no representations or warranties, expressed or implied, as to the accuracy of the information. References to square footage or age are approximate. Buyer must verify the information and bears all risk for any inaccuracies.

## VERSATILE SPACE ON BUSY COURSEY BLVD



### POPULATION

	1 MILE	3 MILES	5 MILES
Total population	11,145	72,384	168,496
Median age	36.4	36.2	36.2
Median age (Male)	36.1	34.5	34.1
Median age (Female)	36.4	37.9	38.1

### HOUSEHOLDS & INCOME

	1 MILE	3 MILES	5 MILES
Total households	4,945	30,749	68,845
# of persons per HH	2.3	2.4	2.4
Average HH income	\$70,378	\$72,489	\$76,326
Average house value	\$228,825	\$214,492	\$223,874

\* Demographic data derived from 2010 US Census

