

FOR LEASE | SUITE 101 • APPROX 1,194 RSF

AMENITIES & HIGHLIGHTS

- Ideal for Dental Office
- Beautiful Layout
- Within Walking Distance to St. Joseph Hospital & CHOC
- Ample Open and Free Parking
- Professionally Managed
- Unique Architecture and Design
- Elevator Served
- Excellent Freeway Access to the 22, 55, 57 & 5 Freeways

SPECIFICATIONS

Total Space Available:	1,194 RSF/1,104 USF
Rental Rate:	\$2.65 NNN
Property Type:	Office
Building Size:	24,252 SF
Year Built:	2003
Load:	7.8%

CONTACT:

Eileen Doody

Senior Vice President Healthcare Services
949.390.5506 | edoody@pmrg.com
CalBRE 00965140

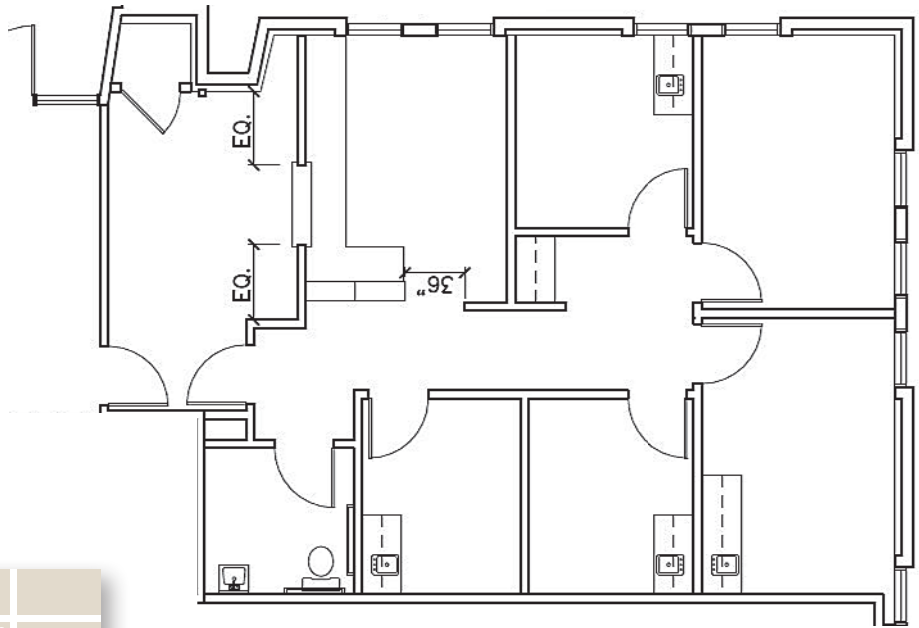
The information contained herein has been gathered from sources deemed reliable. Though we have no reason to doubt the accuracy, we do not guarantee it.

PMRG

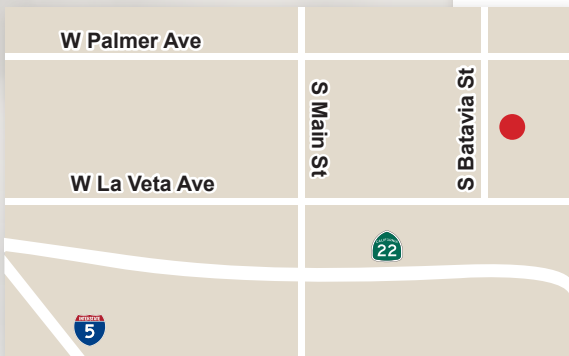
TRICO SYCAMORE PLAZA

431 SOUTH BATAVIA | ORANGE, CA 92868

FOR LEASE | SUITE 101 • APPROX 1,194 RSF



SUITE 101 - FIRST FLOOR: APPROX 1,194 RSF



The information contained herein has been gathered from sources deemed reliable. Though we have no reason to doubt the accuracy, we do not guarantee it.

CONTACT:

Eileen Doody

Senior Vice President Healthcare Services

949.390.5506 | edoody@pmrg.com

CalBRE 00965140

2020 Main Street | Suite 800 | Irvine, CA 92614 | P. 949.390.5500 | F. 949.390.5501

www.pmrg.com | CalBRE 01522492