

# PDX Corporate Center South Building D

## Industrial Space For Lease – 9,835 Square Feet

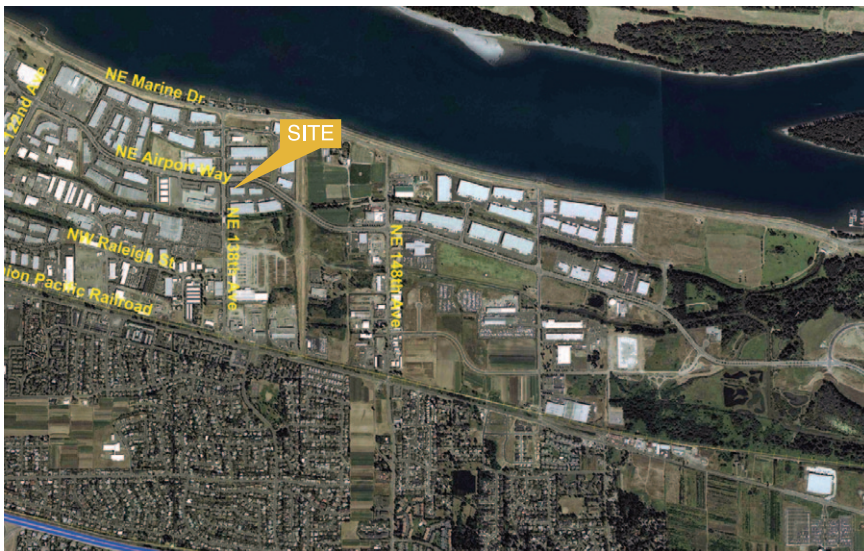


### location

- 2.2 miles east of I-205
- 4.2 miles east of Portland International Airport
- Airport Way and 138th visibility and signage
- Signaled access

### facility

- 9,835 sf
- 1,225 sf office
- 20' clear height
- 130' building depth
- 5 dock high doors
- 1 grade level door
- 277/480V, 3-phase electrical service
- ESFR Sprinkler System
- Tilt-up concrete construction
- Insulated roof



13818 NE Airport Way  
Portland, Oregon 97230

### contact



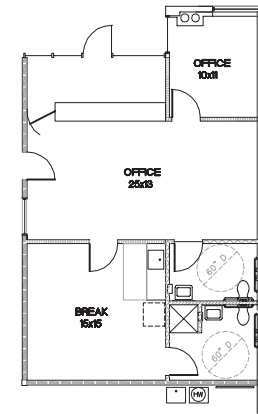
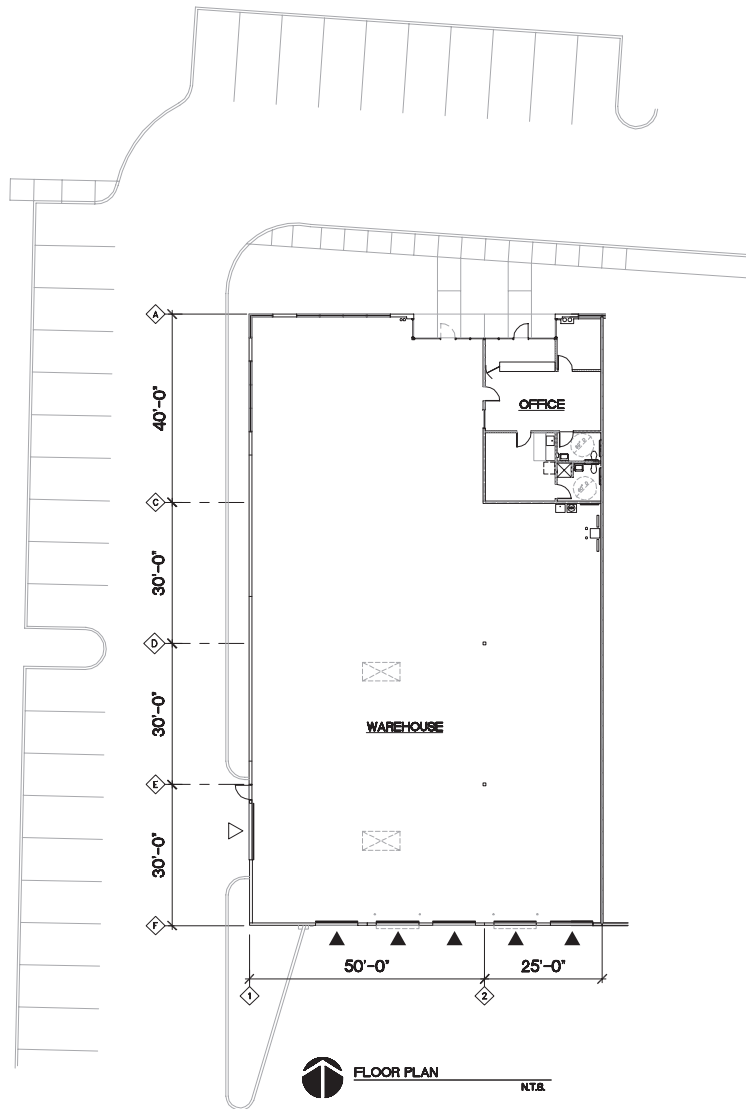
**Paul Breuer, SIOR**  
503-499-0061 Phone  
503-957-6562 Cell

**Jerry Matson**  
503-499-0077 Phone  
503-866-5750 Cell

**ProLogis**  
26277 SW 95th Avenue  
Suite 405  
Wilsonville, Oregon 97070  
503-685-9292 Phone  
503-685-6363 Fax  
[www.prologis.com](http://www.prologis.com)

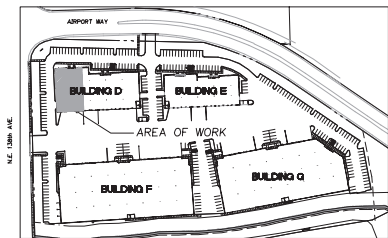


# PDX Corporate Center South Building D



**FLOOR PLAN**  
 OFFICE AREA: 1,225 SF  
 WAREHOUSE AREA: 8,610 SF  
 RENTABLE AREA: 9,835 SF

**LEGEND**  
 ▼ DOCK-HIGH OVERHEAD DOOR  
 ▽ DRIVE-IN OVERHEAD DOOR



contact



**Paul Breuer, SIOR**  
 503-499-0061 Phone  
 503-957-6562 Cell

**Jerry Matson**  
 503-499-0077 Phone  
 503-866-5750 Cell

**ProLogis**  
 26277 SW 95th Avenue  
 Suite 405  
 Wilsonville, Oregon 97070  
 503-685-9292 Phone  
 503-685-6363 Fax  
[www.prologis.com](http://www.prologis.com)



No warranty or representation, expressed or implied, is made as to the accuracy of the information contained herein, and same is submitted subject to error and omissions.

WEST114734