

405-411

BLUE HILL AVENUE
DORCHESTER, MA



USER OR INVESTMENT BUILDING FOR SALE

6,852 GROSS SF - 3,420 NET RENTABLE AREA

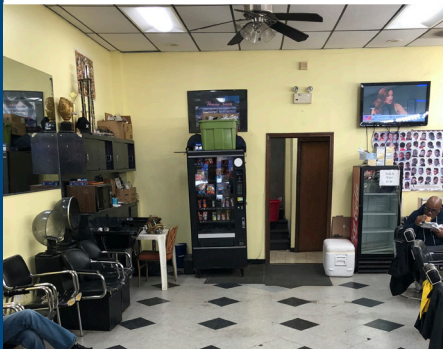
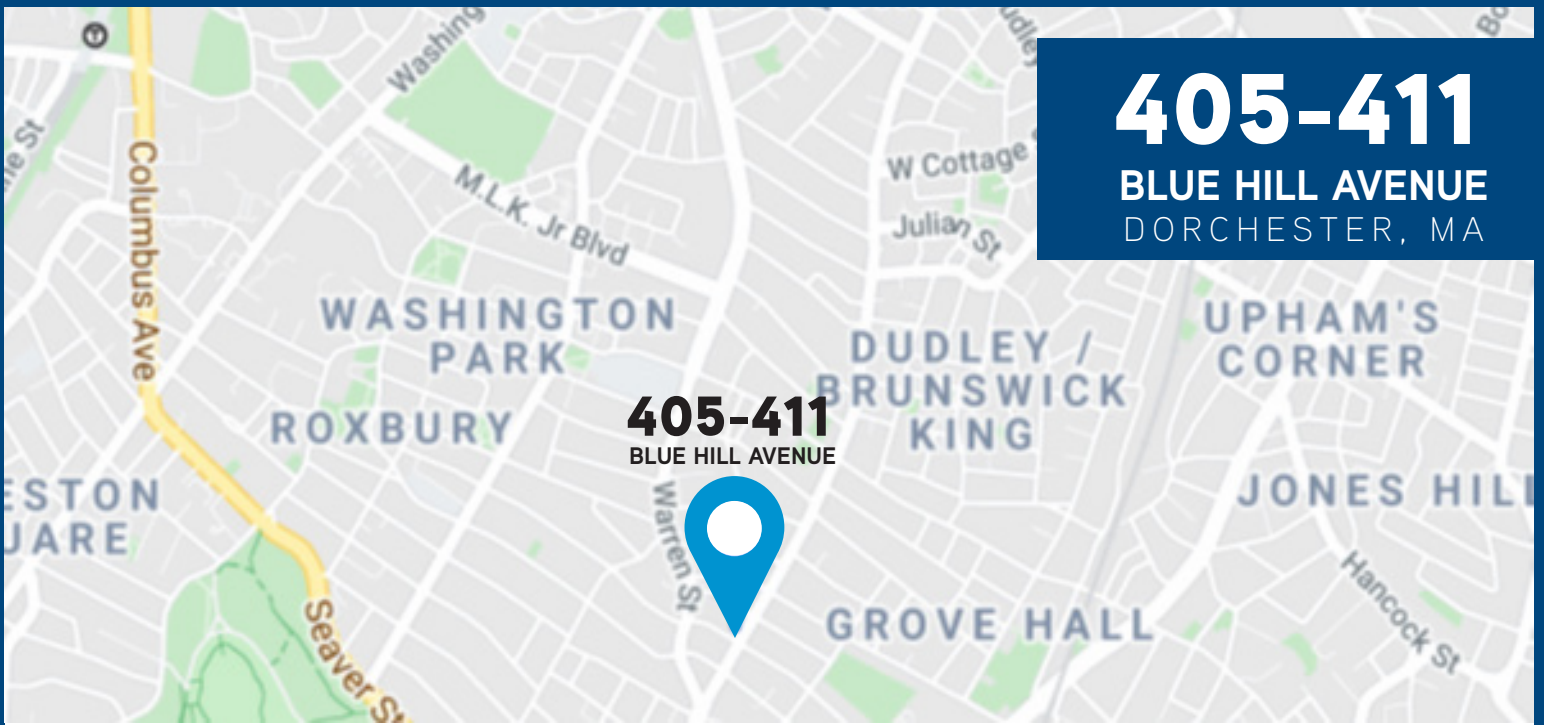
PRICE \$847,000

Colliers International is pleased to present a 6,852 SF facility (including basement) with 3,420 net rentable square feet. Lot size is 4,075 SF (0.09 acres) at the corner of Blue Hill Avenue and Devon Street. 1.5 miles to Dudley Station and ½ mile to the Franklin Park Zoo. This area continues to experience gentrification with significant renovation and redevelopment of real property.



405-411
BLUE HILL AVENUE
DORCHESTER, MA

405-411
BLUE HILL AVENUE



PROPERTY SPECIFICATIONS

PROPERTY TYPE	Free standing retail/ commercial building
DESIGN	Multi-tenant - 3-4 tenants
BASIC CONSTRUCTION	Wood Frame
HVAC	Gas fired forced hot air with sheet metal duct work, rooftop mounted condensers units
LIGHTING	Fluorescent
ELECTRICAL	3-phase, 220 volt service with meters and subpanels for each unit
FIRE PROTECTION	Smoke alarms
ZONING	MFR/LS Roxbury Neighborhood

CONTACT US

Wayne Spiegel SIOR CCIM
LEED Green Associate
Senior Vice President
508 259 2348
wayne.spiegel@colliers.com

Nancy Emmons
Assistant Vice President
617 330 8136
nancy.emmons@colliers.com

This document has been prepared by Colliers International for advertising and general information only. Colliers International makes no guarantees, representations or warranties of any kind, expressed or implied, regarding the information including, but not limited to, warranties of content, accuracy and reliability. Any interested party should undertake their own inquiries as to the accuracy of the information. Colliers International excludes unequivocally all inferred or implied terms, conditions and warranties arising out of this document and excludes all liability for loss and damages arising there from. This publication is the copyrighted property of Colliers International and/or its licensor(s). ©2020. All rights reserved.

160 Federal Street Floor 11
Boston, MA 02110
617 330 8000
colliers.com/boston

