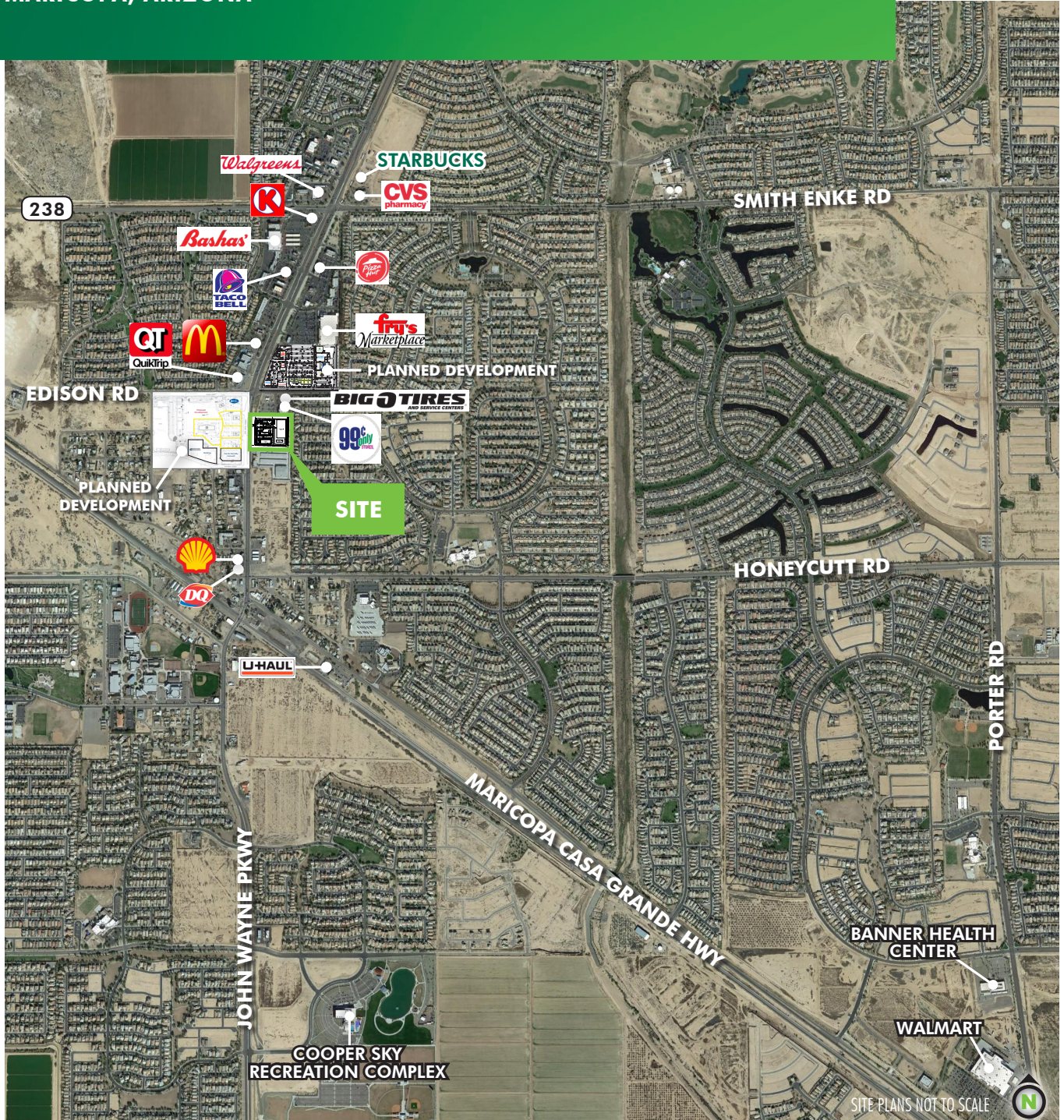


NOW AVAILABLE

PADS AVAILABLE

S/SEC OF HWY 347 & EDISON ST
MARICOPA, ARIZONA



www.cbre.us

CBRE

NOW AVAILABLE PADS AVAILABLE

S/SEC OF HWY 347 & EDISON ST



PROPERTY HIGHLIGHTS

- + Municipality: Maricopa, Arizona
- + Highway 347 Traffic Counts (Source: ADOT):
 - North: ±42,500 VPD
 - South: ±31,000 VPD
- + Price: Call for pricing
- + This site is strategically located within the primary commercial corridor in the City of Maricopa
- + 387 new businesses started in the Maricopa area within the last 3 years
- + The average household income in Maricopa is \$75,000; this is among the highest in the State of Arizona
- + Maricopa has one of the lowest crime rates in Metro Phoenix

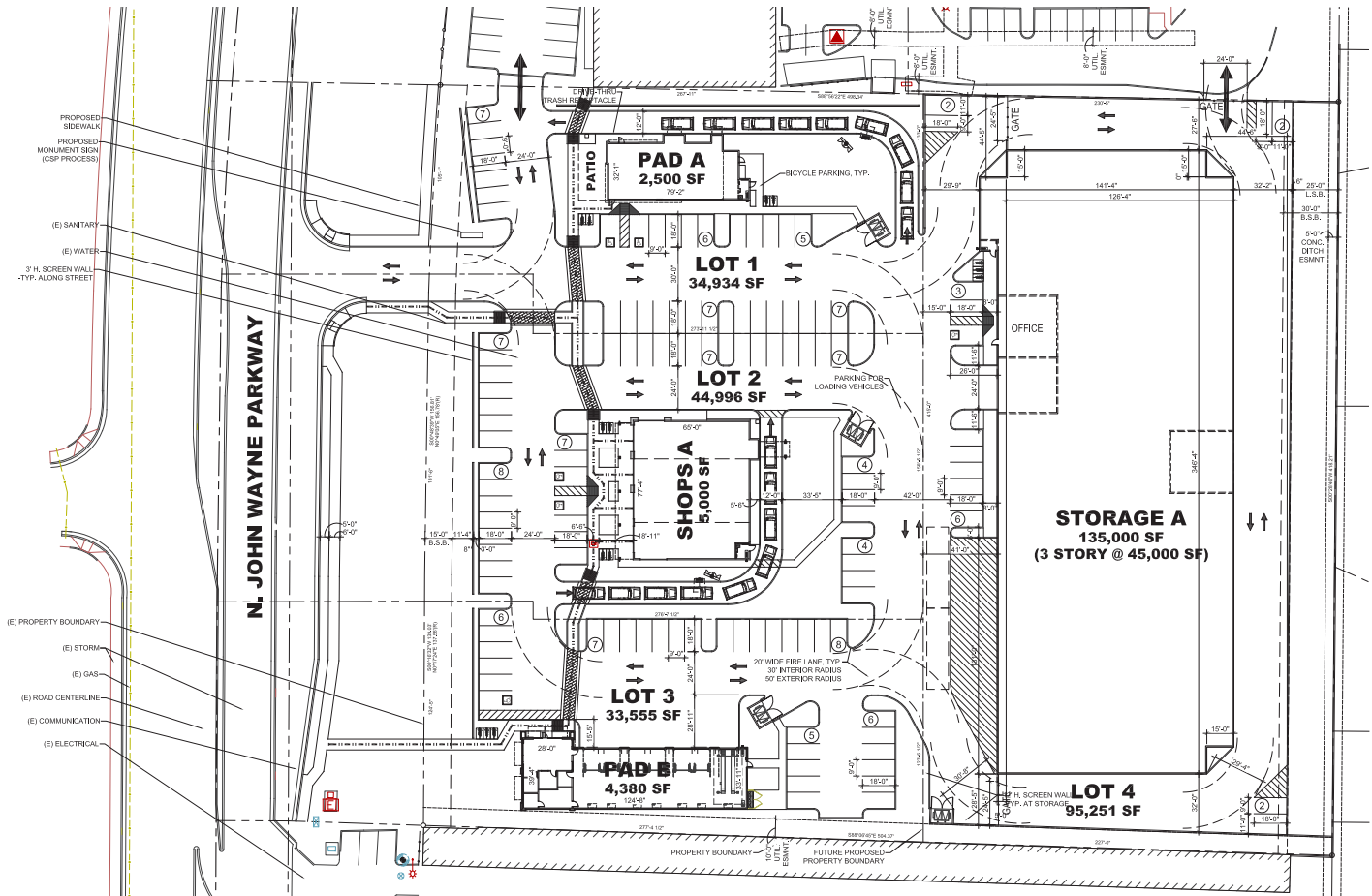


NOW AVAILABLE
PADS AVAILABLE

S/SEC OF HWY 347
 & EDISON ST



SITE PLAN



CONTACT US

R. MAX BIPPUS

First Vice President
 +1 602 735 5518
 max.bippus@cbre.com

SITE PLAN NOT TO SCALE
 ALL DIMENSIONS ARE APPROXIMATE



© 2018 CBRE, Inc. All rights reserved. This information has been obtained from sources believed reliable, but has not been verified for accuracy or completeness. You should conduct a careful, independent investigation of the property and verify all information. Any reliance on this information is solely at your own risk. CBRE and the CBRE logo are service marks of CBRE, Inc. All other marks displayed on this document are the property of their respective owners. Photos herein are the property of their respective owners. Use of these images without the express written consent of the owner is prohibited.

www.cbre.us

CBRE