

AmberGlen Business Center

20400 NW Amberwood Dr
Beaverton, OR 97006



Highlights

The 20400 Building at AmberGlen is a uniquely designed single-story brick/concrete building.

The 51,108 square foot building is conveniently located on 4.8 acres on Amberwood Drive adjacent to N.W. 206th Avenue.

The building features 90 foot bay depths, with 15 feet of clear height, extensive storefront glass, and recessed dock high and grade level loading.

The 20400 Building is fully landscaped and provides a minimum of 3.6/1 parking for tenants and visitors, is directly accessible via both Amberwood Drive and N.W. 206th, and has easy 18-wheeler turnaround truck access in loading area.

Available Space: Suite 150: 5,558 SF

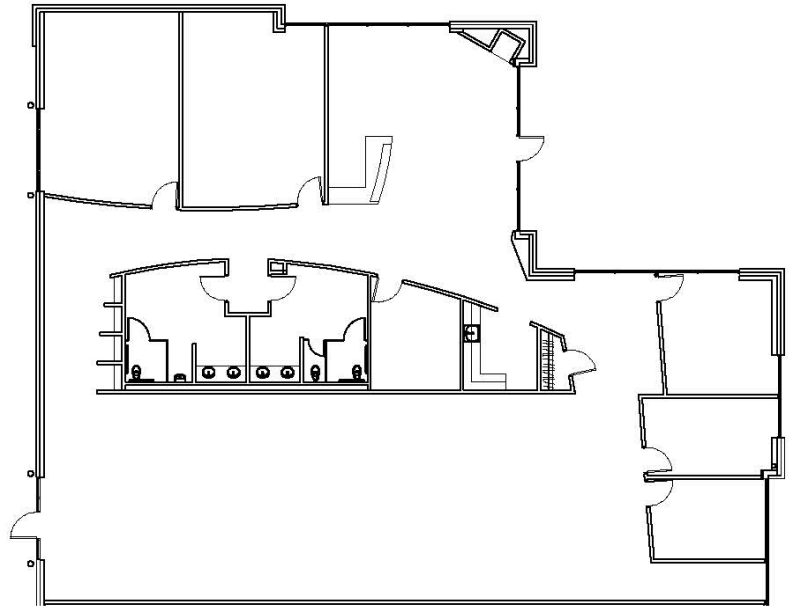
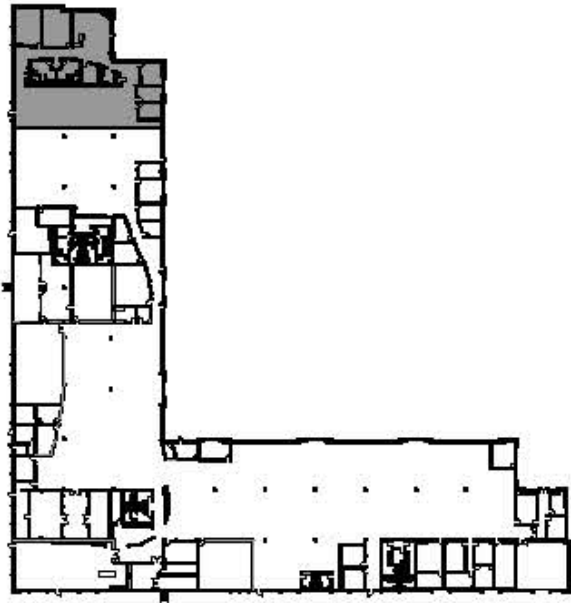
Asking Rate: \$1.15 NNN

Contact

Keith Young
503.221.2275
kyoung@kiddermathews.com

AmberGlen Business Center

20400 Building | Suite 150
Approximately 5,558 SF



Contact

Keith Young
503.221.2275
kyoung@kiddermathews.com