



# REGENCY OFFICE PARK

27680 Franklin Road – Southfield, Michigan



## FOR LEASE

- From 1,051 to 5,340 Square Feet Available
- Office & Medical Uses Permitted
- Recently Completed \$1,000,000 in Exterior Renovations
- Highly Improved Interior Finishes
- Located ¼ Mile From the Franklin Road/I-696 Interchange
- Building & Monument Signage Available
- Abundant Parking
- 24/7 Access

FOR LEASE :  
FROM 1,051 TO 5,340 SQUARE FEET

REGENCY OFFICE PARK  
SOUTHFIELD, MICHIGAN

## REGENCY OFFICE PARK

### SUITE DETAILS:

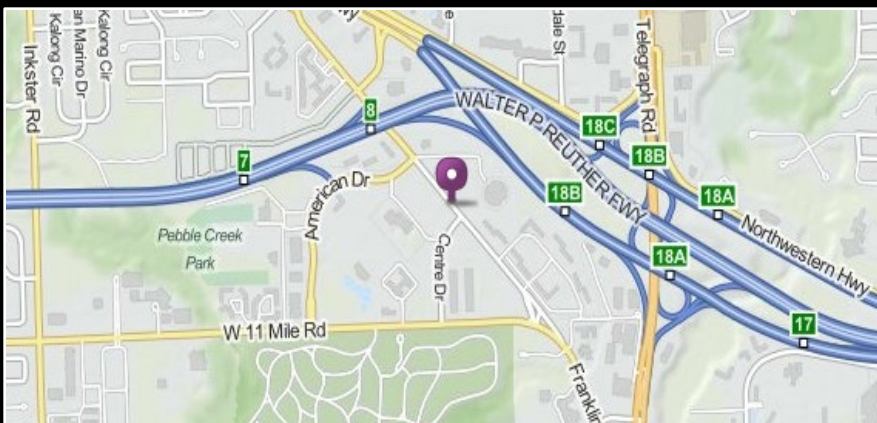
Suite 27692: 1,693 SF

Suite 27700: 1,051 SF

Suite 27764: 1,876 SF

Suite 27770: 2,478 SF

Suite 27680: 5,340 SF



For information, please contact:

SCOTT MARCUS

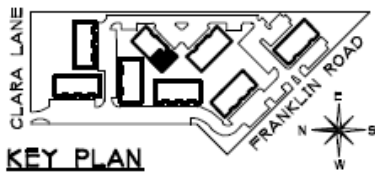
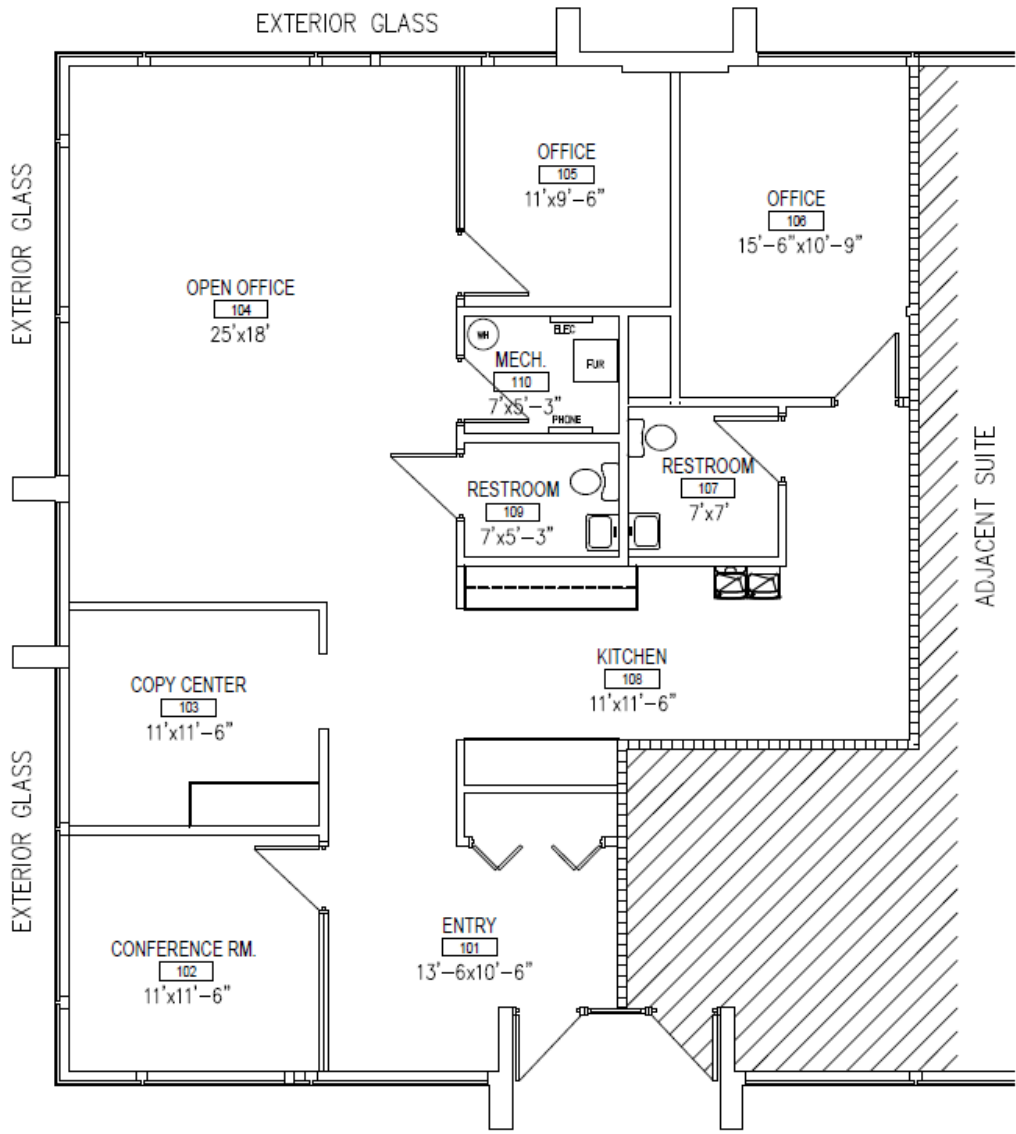
Office: 248.645.2600

Cell: 248.730.2227

Marcus@RSMDevelopment.com

**RSM** DEVELOPMENT  
& MANAGEMENT





KEY PLAN

**REGENCY  
OFFICE PARK**

EXISTING CONDITIONS  
**SUITE 27692**



SCALE: 1/8" = 1'-0"

**RSM** DEVELOPMENT & MANAGEMENT

(248) 645-2600 PHONE  
(248) 644-2801 FAX  
P.O. BOX 772  
BLOOMFIELD HILLS, MI

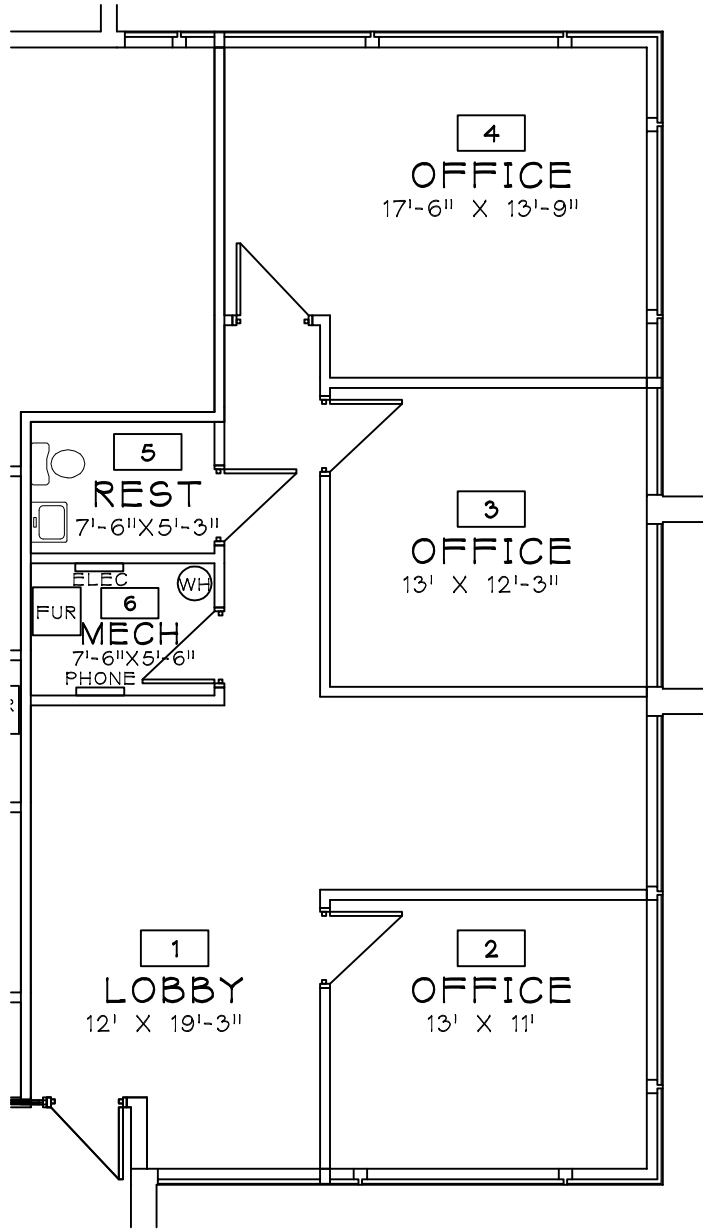
REGENCY BUILDING G  
27692 FRANKLIN ROAD  
SOUTHFIELD, MICHIGAN  
1,693 USF



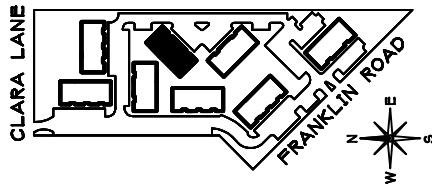
EXTERIOR GLASS

ADJACENT SUITE

EXTERIOR GLASS



**KEY PLAN**



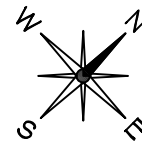
REGENCY OFFICE PARK

**BUILDING G**

SUITE 27700

EXISTING CONDITIONS  
27700 FRANKLIN ROAD  
SOUTHFIELD, MICHIGAN  
1,051 USF

10-31-17

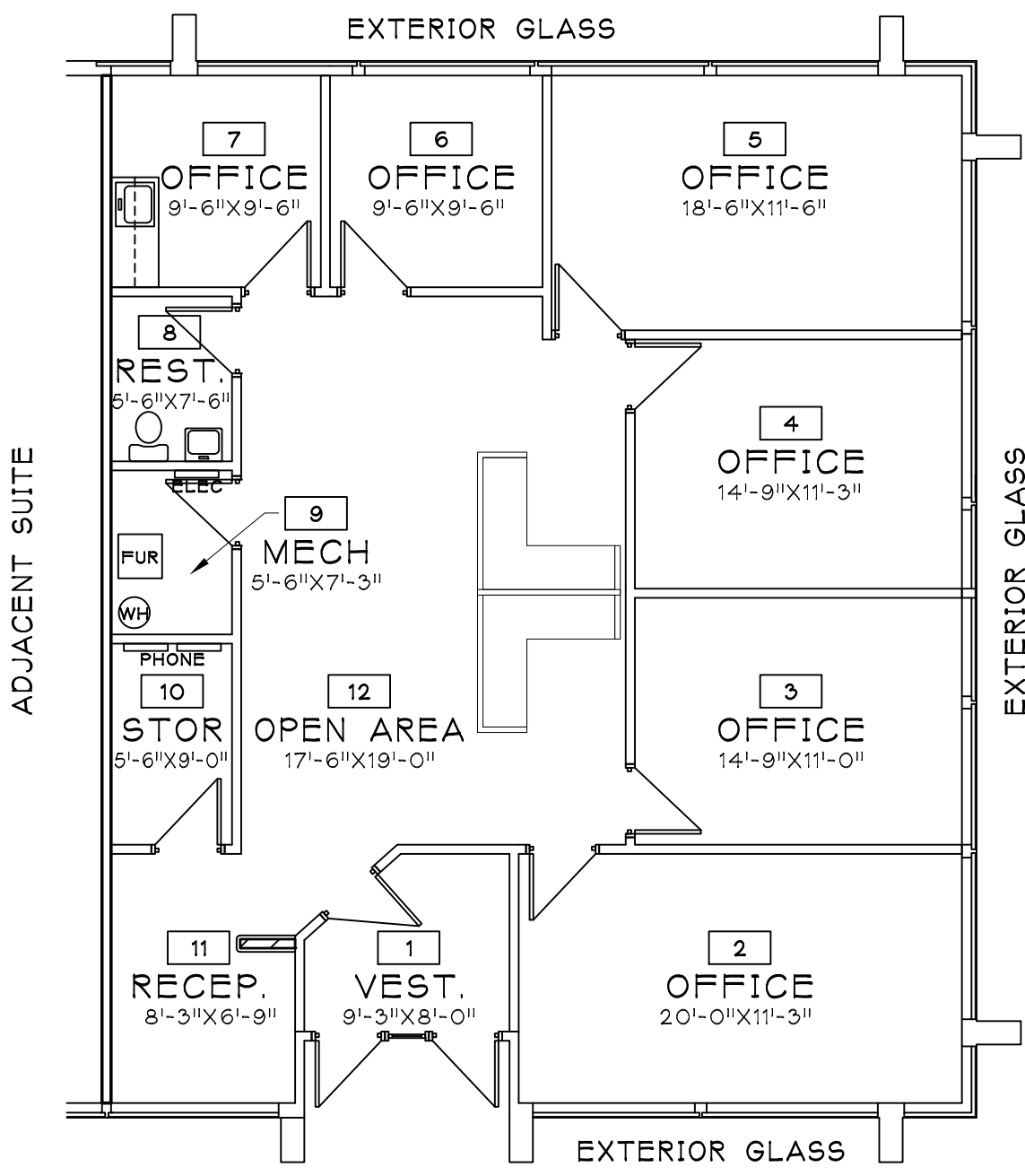


SCALE: 1/8" = 1'-0"

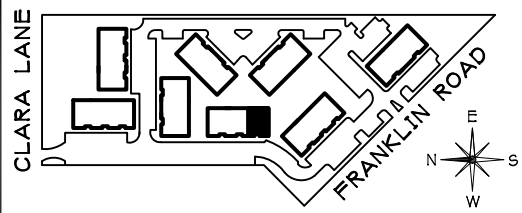
**RSM** DEVELOPMENT & MANAGEMENT  
 (248) 645-2600 PHONE  
 (248) 644-2801 FAX  
 P.O. BOX 772  
 BLOOMFIELD HILLS, MI

**DAVIS & DAVIS**  
 INTERIOR DESIGN CO.

30500 NORTHWESTERN HWY. SUITE 311  
 FARMINGTON HILLS, MI 48334  
 PHONE (248) 855-7040 FAX (248) 855-7744  
 WWW.DAVISINTERIORDESIGN.COM



**KEY PLAN**



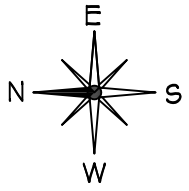
**REGENCY  
OFFICE PARK**

**BUILDING C  
SUITE 27764**

EXISTING CONDITIONS  
27764 FRANKLIN ROAD  
SOUTHFIELD, MICHIGAN

1,876 USF

04.03.17

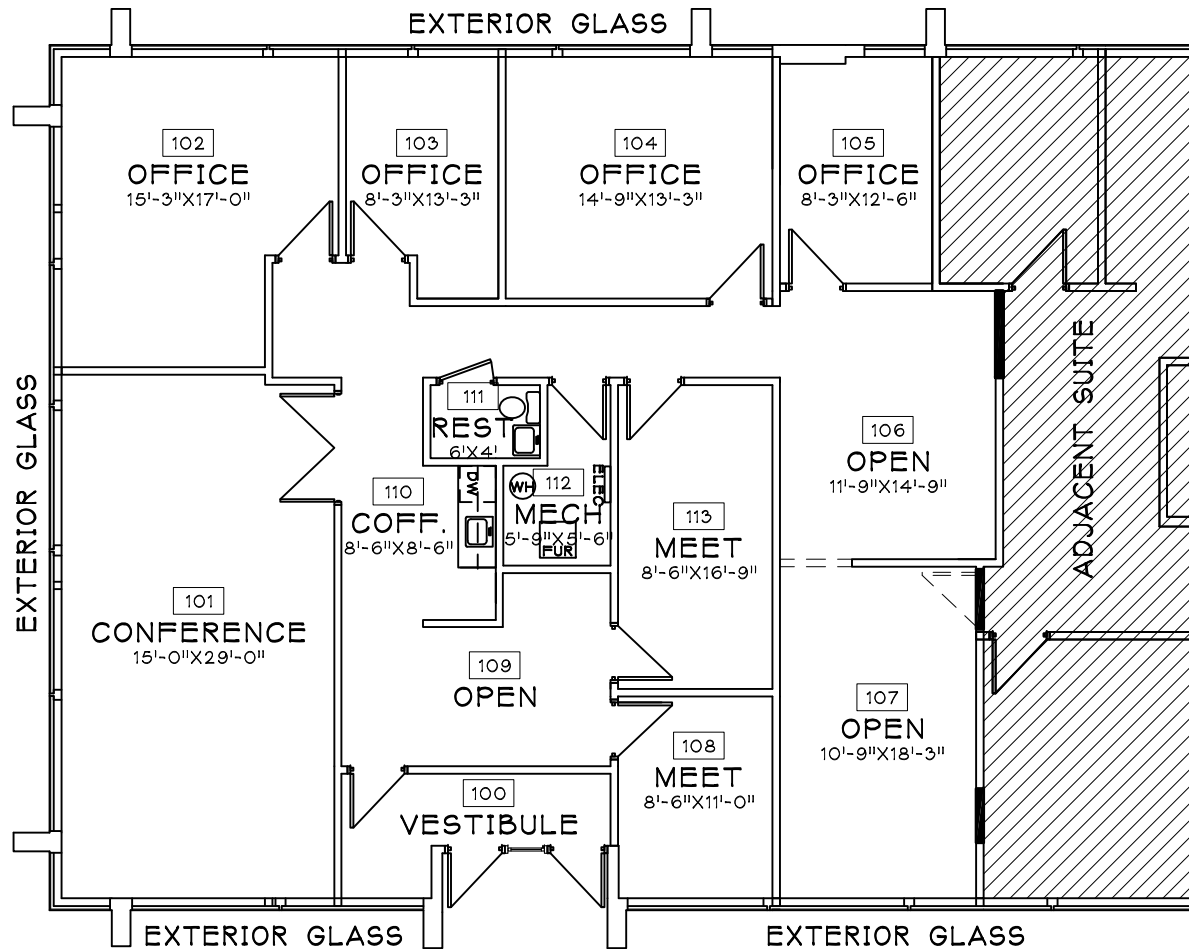


NOT TO SCALE

**DAVIS & DAVIS**  
INTERIOR DESIGN CO.

30500 NORTHWESTERN HWY. SUITE 311  
FARMINGTON HILLS, MI 48334  
PHONE (248) 855-7040 FAX (248) 855-7744  
WWW.DAVISINTERIORDESIGN.COM

**RSM** DEVELOPMENT & MANAGEMENT  
(248) 645-2600 PHONE  
(248) 644-2801 FAX  
P.O. BOX 772  
BLOOMFIELD HILLS, MI



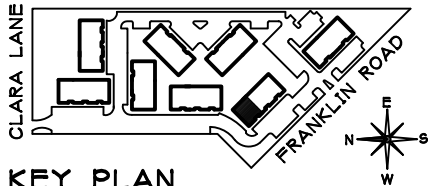
**REGENCY  
OFFICE PARK**

EXISTING CONDITIONS  
**SUITE 27770**

REGENCY  
BUILDING B  
27770 FRANKLIN ROAD  
SOUTHFIELD, MI

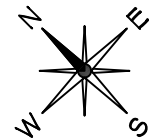
2,478 RSF

01.16.19



KEY PLAN

**RSM** DEVELOPMENT  
& MANAGEMENT



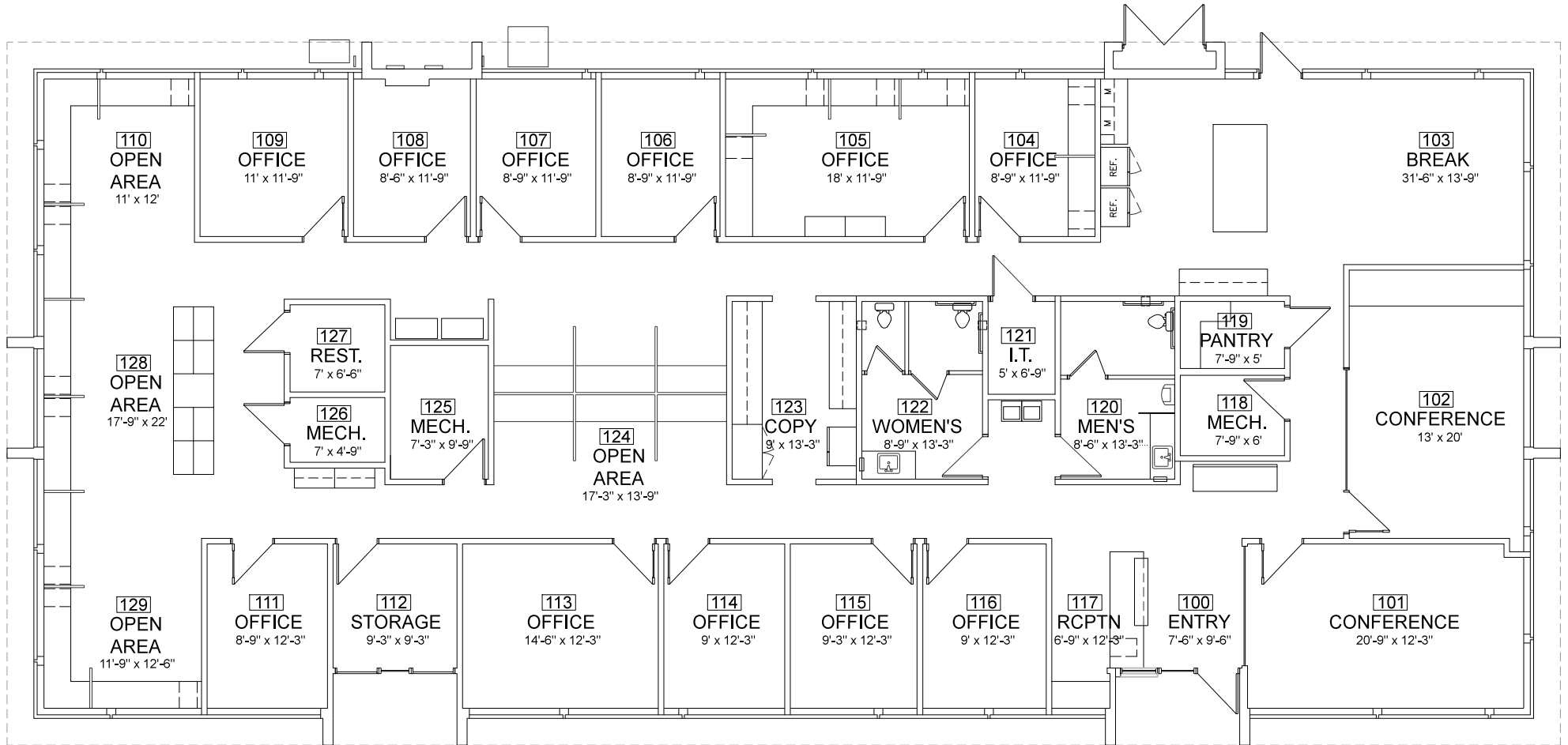
NOT TO SCALE

**DAVIS & DAVIS**  
INTERIOR DESIGN LLC

30500 NORTHWESTERN HWY., SUITE 311  
FARMINGTON HILLS, MI 48334  
PHONE (248) 855-7040 FAX (248) 855-7744  
WWW.DAVISINTERIORDESIGN.COM

# BUILDING "H"

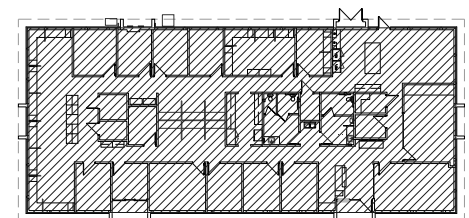
Existing Conditions (with Existing Furniture Shown) | 5,340 USF  
01.29.2019



## REGENCY OFFICE PARK

27680 Franklin Road  
Southfield, MI 48331

KEY PLAN: Not to Scale



DRAWING SCALE: Not to Scale