

FOR LEASE

Kinects Tower

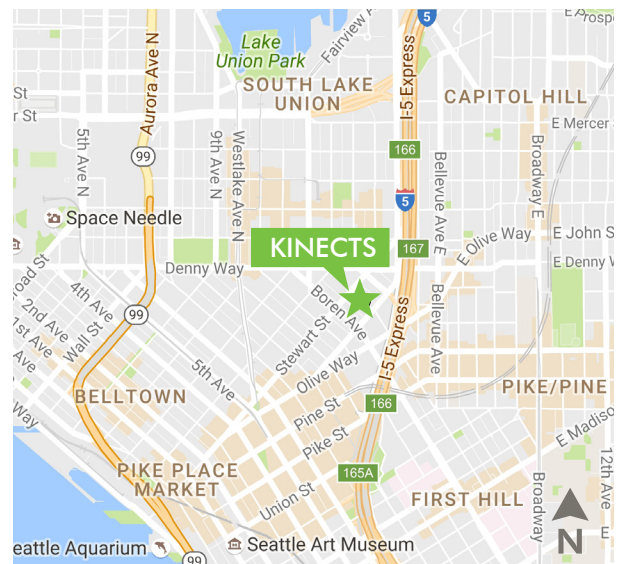
1823 MINOR AVENUE, SEATTLE, WA 98101

RETAIL



PROPERTY INFO

- + 1,207 SF of retail space available
- + Be a part of the rapidly changing Denny Triangle neighborhood
- + Restaurant or retail opportunities at one of the city's most exciting developments, featuring 345 residential units and 12 penthouses
- + More than 1,300 employees within two blocks
- + Available now



www.cbre.us/seattle

CBRE

FOR LEASE

Kinects Tower

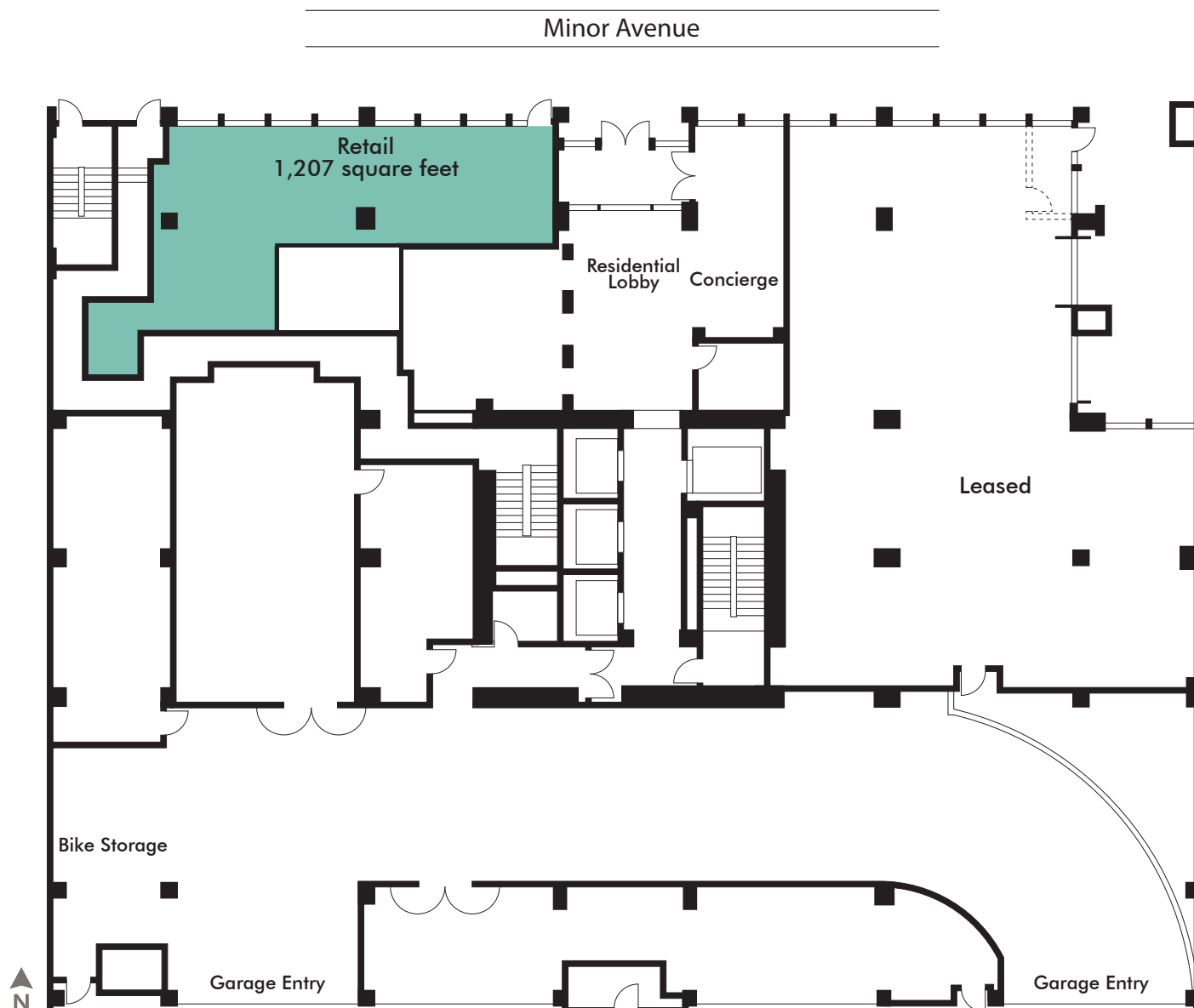
1823 MINOR AVENUE, SEATTLE, WA 98101

2018 DEMOGRAPHICS

	1 Mile	3 Mile	5 Miles
Population	81,114	236,143	467,740
Total Employees	172,547	336,688	436,317
Average Annual Population Growth 2018-2023	3.76%	2.52%	2.08%
Number of Households	52,682	127,440	230,103
Average Household Income	\$91,501	\$106,886	\$116,001



FLOOR PLAN

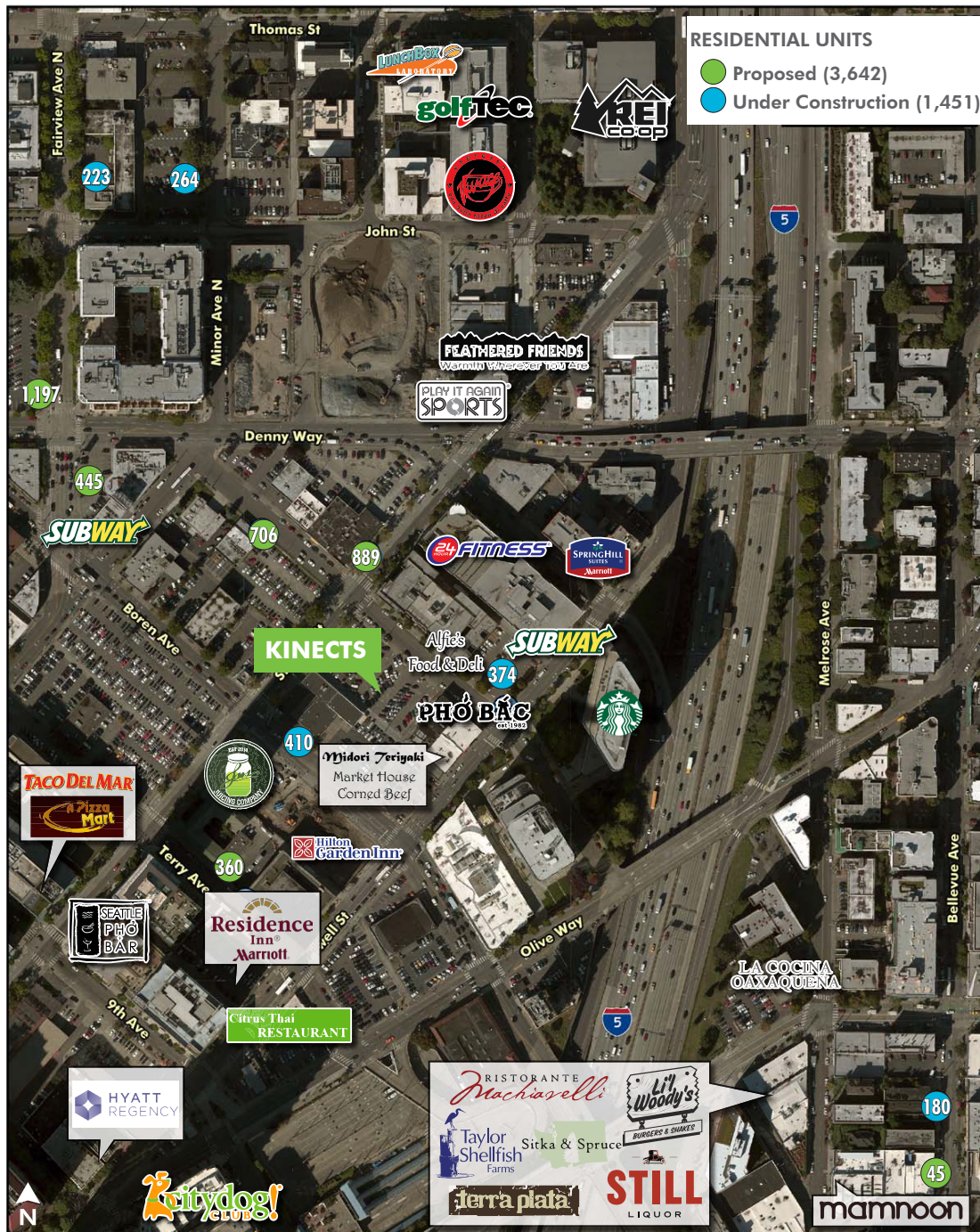


FOR LEASE

Kinects Tower

1823 MINOR AVENUE, SEATTLE, WA 98101

RETAIL



Susie Detmer

Senior Vice President
+1 206 292 6040
susie.detmer@cbre.com

Alex Williams

Associate
+1 206 292 6025
alex.williams2@cbre.com

CBRE, Inc.

1420 Fifth Avenue
Suite 1700
Seattle, WA 98101

© 2019 CBRE, Inc. All rights reserved. This information has been obtained from sources believed reliable, but has not been verified for accuracy or completeness. You should conduct a careful, independent investigation of the property and verify all information. Any reliance on this information is solely at your own risk. CBRE and the CBRE logo are service marks of CBRE, Inc. All other marks displayed on this document are the property of their respective owners. Photos herein are the property of their respective owners. Use of these images without the express written consent of the owner is prohibited. 6-24-19 jm

www.cbre.us/seattle

CBRE