

AIRPORT CAMPUS

113 KING STREET, ARMONK, NEW YORK
LARGEST BLOCK IN WESTCHESTER
WWW.AIRPORTCAMPUSNY.COM



For leasing information, please contact:

TRIP HOFFMAN
203 326 5812
trip.hoffman@cushwake.com

MATTHEW LISK
914 305 9303
matthew.lisk@cushwake.com

MICHAEL MCCARTHY
914 305 9304
michael.mccarthy@cushwake.com

CUSHMAN & WAKEFIELD OF CONNECTICUT, INC.
107 Elm Street, 8th Floor
Four Stamford Plaza, Stamford, CT 06902

A full commission computed and earned in accordance with the rates and conditions of our agency agreement with our principal, when received from our principal, will be paid to the cooperating broker who consummates a lease which is unconditionally executed and delivered by and between lessor and lessee (a copy of the rates and conditions referred to above is available upon request).



CAMPUS FEATURES

300,000 +/- SF HEADQUARTERS QUALITY OPPORTUNITY

Approvals in place for an additional 243,000 sf plus 800 car parking on the 38 acre site

FEATURES

- Extensive walking trails
- Tennis, basketball + volleyball courts
- Beautiful glass atrium (seats 200 +)
- Fitness center
- Auditorium/multi-purpose room (seats 200 +)
- 17 conference rooms
- Separate meeting house
- Daycare service*
- Zip cars* & more!

* Potential amenity



For leasing information, please contact:

TRIP HOFFMAN
203 326 5812
trip.hoffman@cushwake.com

MATTHEW LISK
914 305 9303
matthew.lisk@cushwake.com

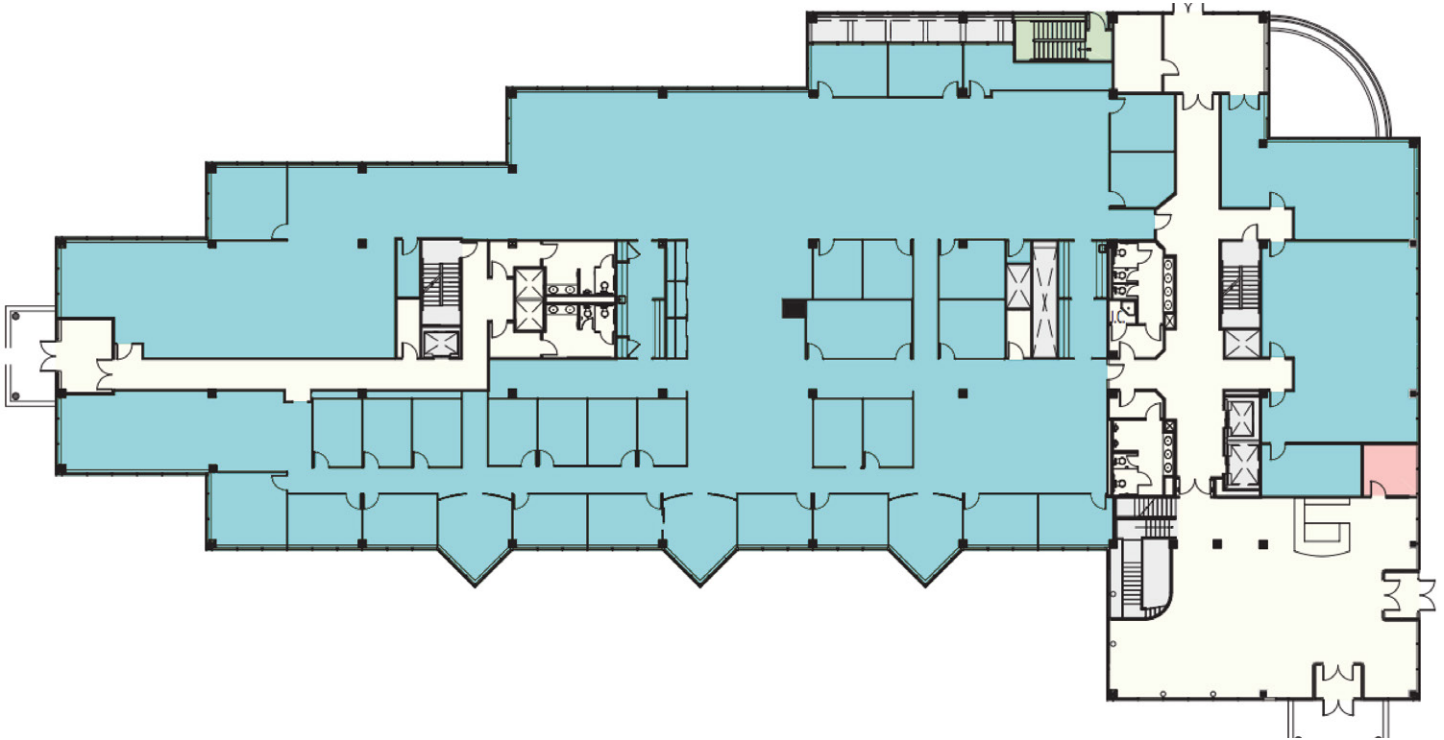
MICHAEL MCCARTHY
914 305 9304
michael.mccarthy@cushwake.com

CUSHMAN & WAKEFIELD OF CONNECTICUT, INC.
107 Elm Street, 8th Floor
Four Stamford Plaza, Stamford, CT 06902

A full commission computed and earned in accordance with the rates and conditions of our agency agreement with our principal, when received from our principal, will be paid to the cooperating broker who consummates a lease which is unconditionally executed and delivered by and between lessor and lessee (a copy of the rates and conditions referred to above is available upon request).



FIRST FLOOR
SOUTH BUILDING - 27,537 RSF



For leasing information, please contact:

TRIP HOFFMAN
203 326 5812
trip.hoffman@cushwake.com

MATTHEW LISK
914 305 9303
matthew.lisk@cushwake.com

MICHAEL MCCARTHY
914 305 9304
michael.mccarthy@cushwake.com

CUSHMAN & WAKEFIELD OF CONNECTICUT, INC.
107 Elm Street, 8th Floor
Four Stamford Plaza, Stamford, CT 06902

A full commission computed and earned in accordance with the rates and conditions of our agency agreement with our principal, when received from our principal, will be paid to the cooperating broker who consummates a lease which is unconditionally executed and delivered by and between lessor and lessee (a copy of the rates and conditions referred to above is available upon request).

