

189 Route 28, Unit 1, West Harwich, MA

Commercial  
**Realty Advisors**

**1,404+/- Sq. Ft. Renovated Retail / Commercial  
Condominium for Sale on Route 28 in West Harwich, Cape Cod**



**FOR SALE!**

Contact **Brad Kuhrt** at Commercial Realty Advisors at 508-862-9000 ext 118 and [bkuhrtz@comrealty.net](mailto:bkuhrtz@comrealty.net)

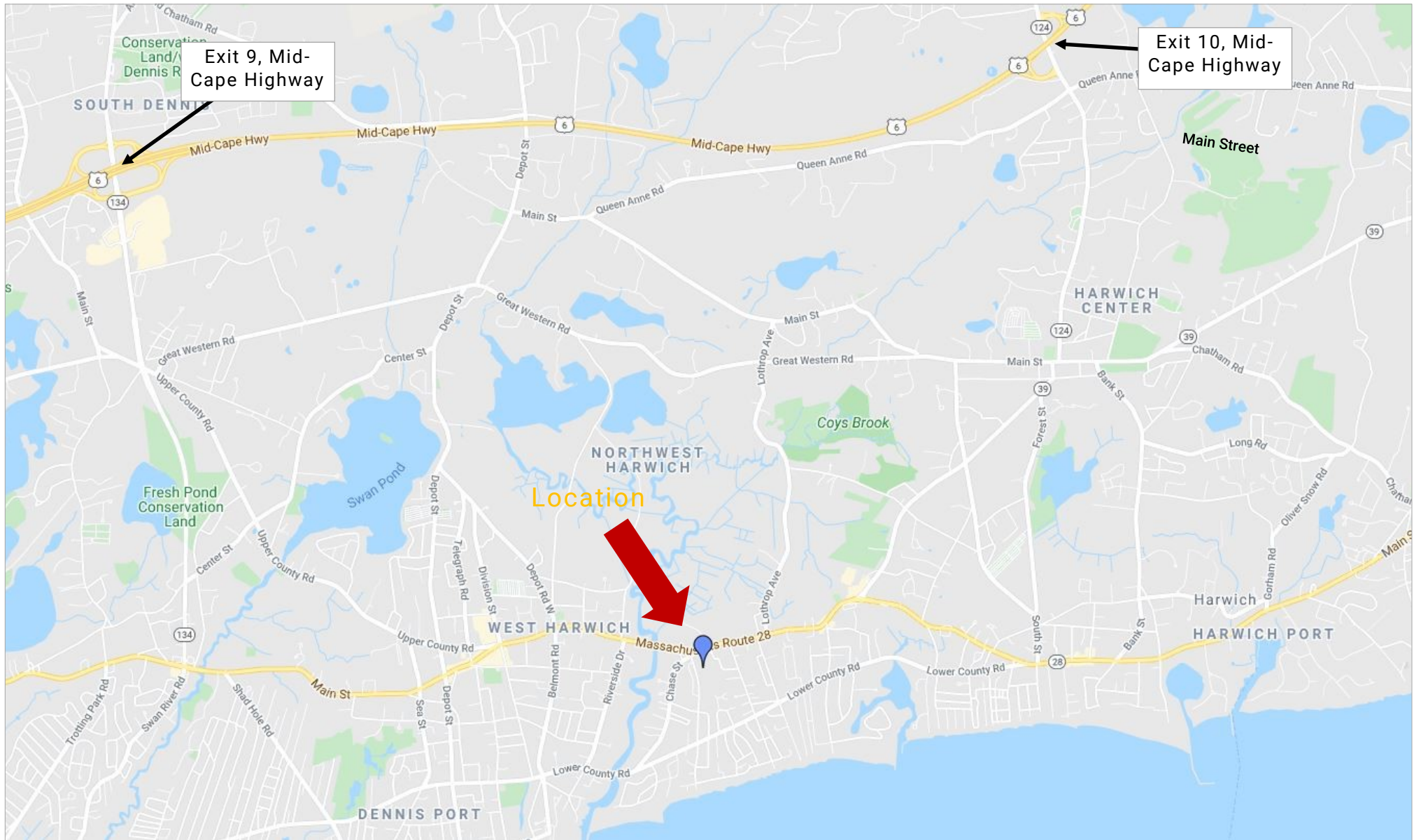
### Property Summary:

- Upscale retail/office location in West Harwich
- Great curb appeal & excellent exposure with professionally kept grounds, ample parking, and easy access
- The unit has been renovated and is in excellent condition

**For Sale at  
\$299,000**

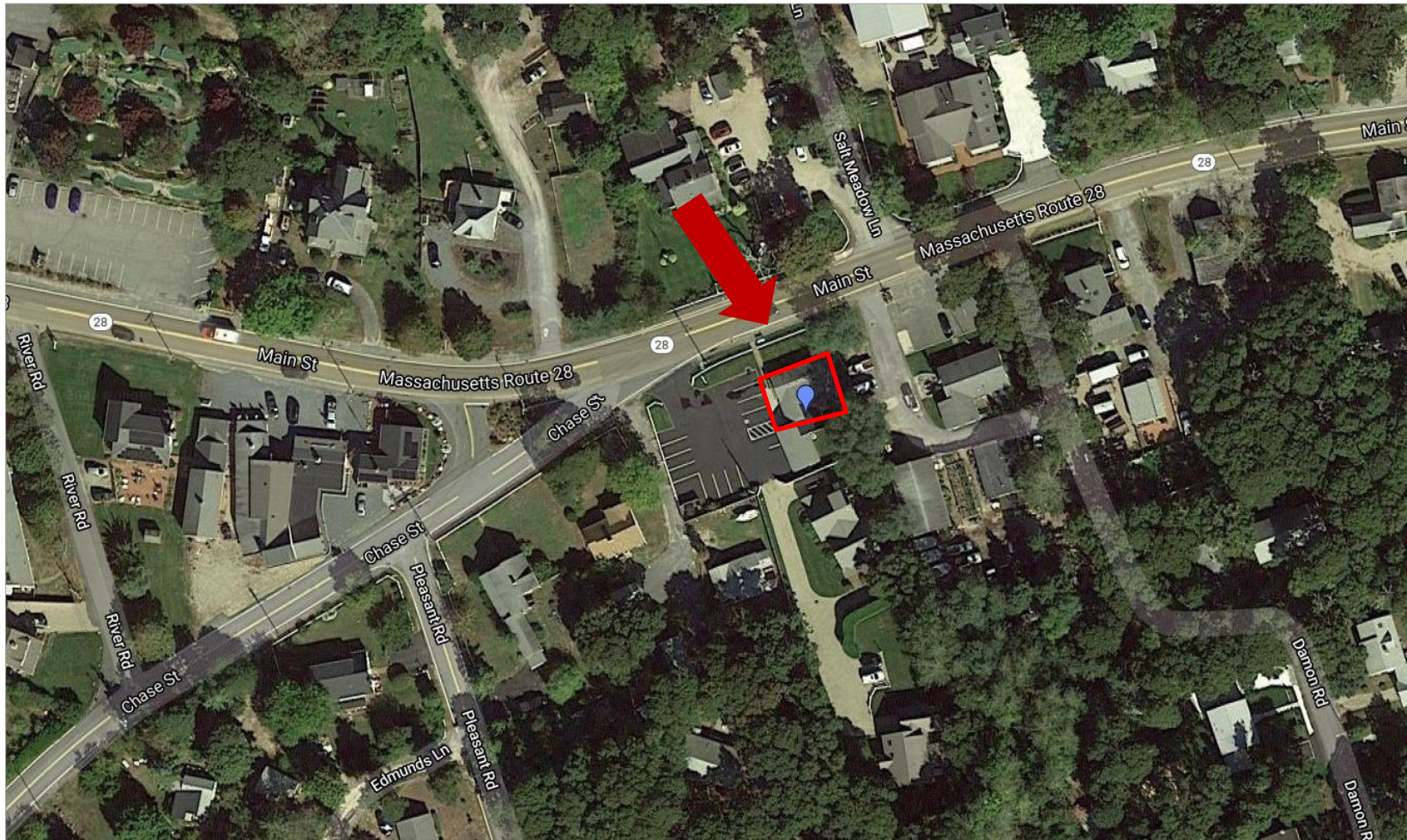
# 189 Route 28, Unit 1, West Harwich, MA

## Property Location Map



# 189 Route 28, Unit 1, West Harwich, MA

Property Aerial View



## Commercial Realty Advisors' Disclaimer

This information has been secured from sources we believe to be reliable, but we make no representation or warranties, expressed or implied, as to the accuracy of the information contained herein. Commercial Realty Advisors, Inc. and the agent presenting this opportunity represent the Seller / Lessor, and are neither architects, engineers, inspectors, accountants nor attorneys, and therefore all buyers / tenants must consult with their own architects, engineers, inspectors, accountants or attorneys as to financial, zoning, lot line, handicapped accessibility, flood plain, mechanical, structural, or environmental concerns. Buyer must verify all information and bears all the risk for inaccuracies. Referenced square footage and acreage and sketched outlines are approximate, and this information package is subject to change.

**Property Summary:**

**189 Route 28, Unit 1, West Harwich, MA**

Upscale retail/office location in West Harwich. It includes 1,400+/- Sq. Ft. of space situated along Route 28 with great curb appeal & excellent exposure.

- Professionally kept grounds, ample parking, and easy access accompany this opportunity
- Convenient to all Mid Cape Points
- The unit has been renovated and is in excellent condition

Address	Land Assessment	Building Assessment	Total Assessment
---------	-----------------	---------------------	------------------

189 Route 28 W. Harwich	0	\$261,400	\$261,400
----------------------------	---	-----------	-----------

**Map/Block/Lot:** Map 11, Parcel U1-A-1

**Title:** Barnstable Registry of Deeds: Book 21587, Page 129

**Zoning:** The property is zoned C-H-1 by the Town of Harwich.

**Assessment and Taxes (2020):** Estimated 2020 RE Taxes: \$2,405



**189 Route 28, Unit 1, West Harwich, MA**  
Property Images



189 Route 28, Unit 1, West Harwich, MA  
Property Floor Plan

