

Fircrest Residential Development Land

NW corner of Orchard St W
& Emerson St
Fircrest, WA

522,720 SF (±12 acres)

Six (6) tax parcels

Zoned: R-4C; City of Fircrest

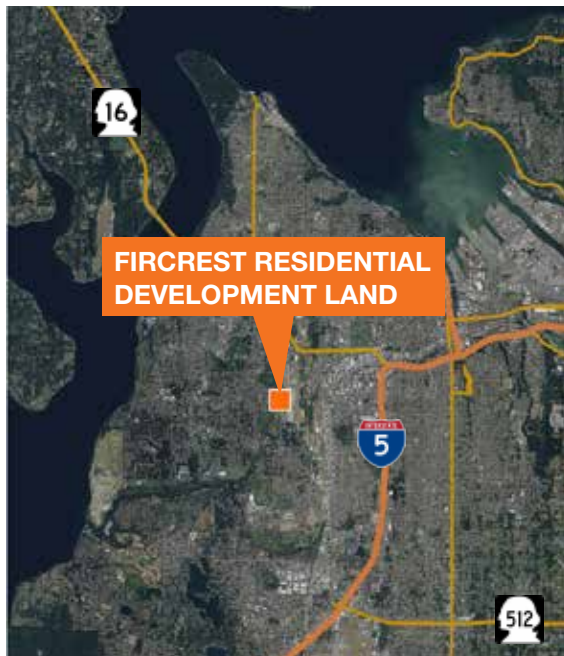
Price: \$805,000 (\$35,000 per lot)

Ceconceptual plan, geo-tech,
wetlands, survey available

One of the last large developable
sites in Fircrest



Location

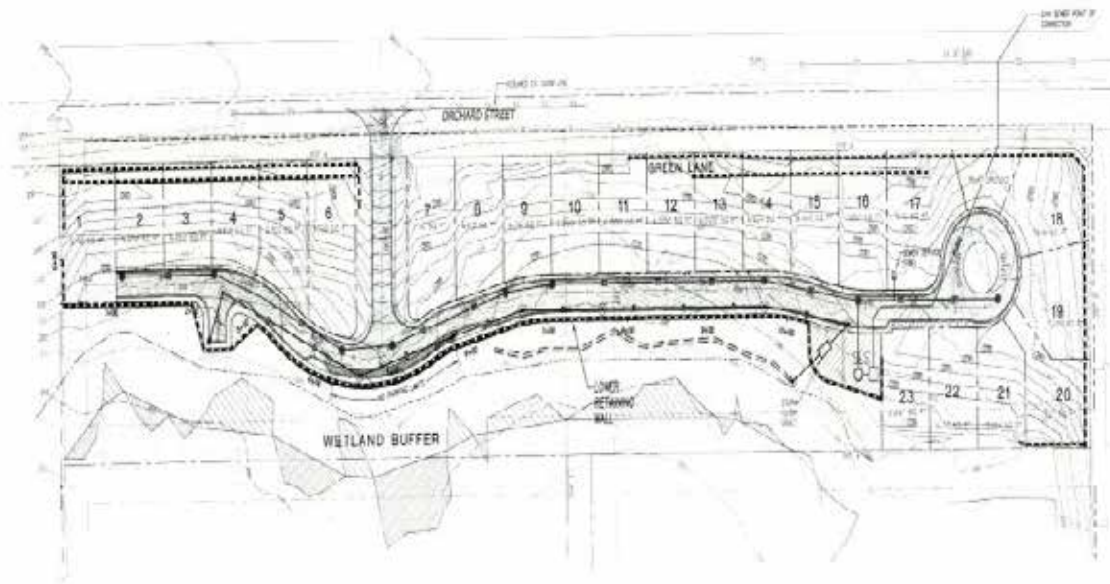
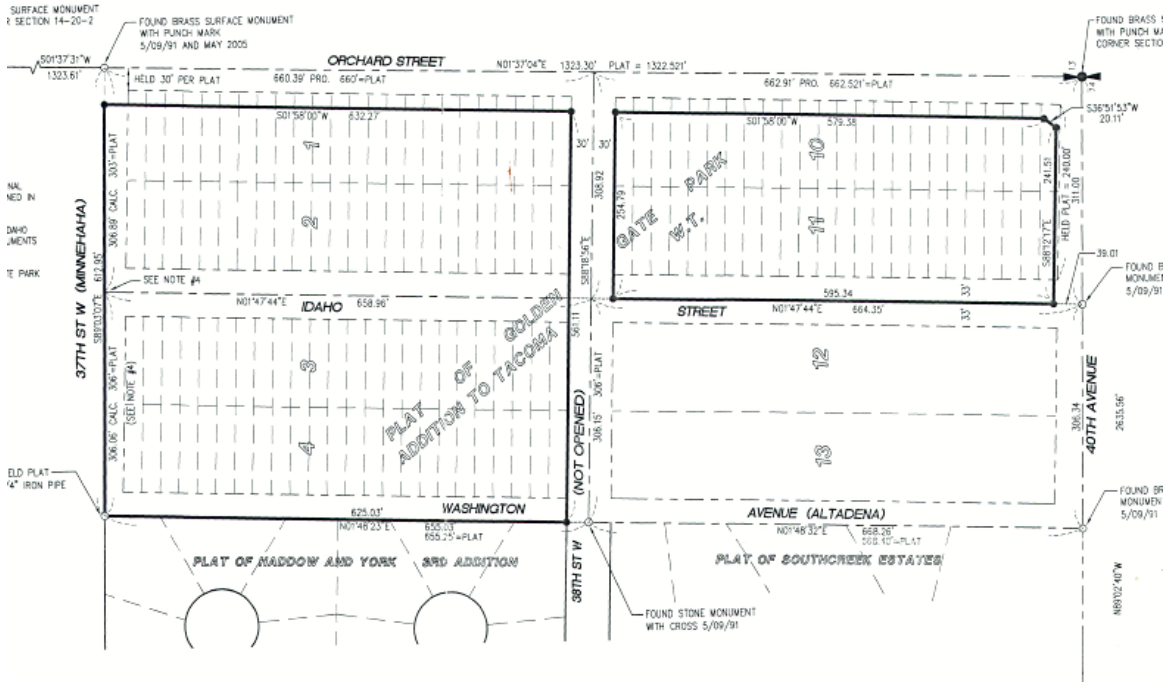


Contact

Peter Wooding
206.248.7301
pwooding@kiddermathews.com

Laura Fox
253.722.1441
lfox@kiddermathews.com

Fircrest Residential Development Land



Contact

Peter Wooding
 206.248.7301
 pwooding@kiddermathews.com

Laura Fox
 253.722.1441
 lfox@kiddermathews.com