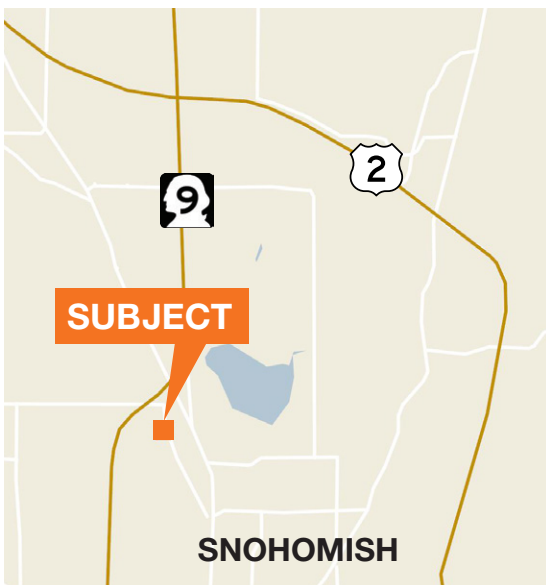




# Available For Sale



**\$3,150,000 - 53,200 SF on 5.5 acres**

Two commercial buildings on ±5.5 acres (±239,580 SF)

Building A is a metal clad warehouse manufacturing building with 28,000 SF warehouse and 1,200 SF office

Building B is a combination of concrete block and wood frame and totals 19,600 SF

4,400 SF steel utility shed parallel to Building B along the western elevation

Industrial zoning allows a wide range of uses

[kiddermathews.com](http://kiddermathews.com)

## Contact

**Brian Kenworthy**

425.450.1131

[briank@kiddermathews.com](mailto:briank@kiddermathews.com)



# High Bay Industrial Buildings

Aerial



## Contact

**Brian Kenworthy**

425.450.1131

briank@kiddermathews.com

[kiddermathews.com](http://kiddermathews.com)

This information supplied herein is from sources we deem reliable. It is provided without any representation, warranty or guarantee, expressed or implied as to its accuracy. Prospective Buyer or Tenant should conduct an independent investigation and verification of all matters deemed to be material, including, but not limited to, statements of income and expenses. Consult your attorney, accountant, or other professional advisor.





# High Bay Industrial Buildings

## Gallery



# High Bay Industrial Buildings

## Fact Sheet

### PROPERTY SPECIFICATIONS

Total Available Size	53,200 SF on 5.5 acres (±239,580 SF)
Zoning	I (Industrial)
Sale Price	\$3,150,000

### PROPERTY SUMMARY AND COMMENTS

Great high bay industrial buildings with easy access via Hwy 9, heavy power, paved yard

### Detail Description

Municipality	Snohomish
Water	To site
Sewer	To site
Electricity	To site
Gas	To site
Tax Year	2014
Taxes	\$25,301.44
AV Total	\$1,761,000.00

## Contact

**Brian Kenworthy**

425.450.1131

briank@kiddermathews.com

[kiddermathews.com](http://kiddermathews.com)

This information supplied herein is from sources we deem reliable. It is provided without any representation, warranty or guarantee, expressed or implied as to its accuracy. Prospective Buyer or Tenant should conduct an independent investigation and verification of all matters deemed to be material, including, but not limited to, statements of income and expenses. Consult your attorney, accountant, or other professional advisor.

