

Karen Sunday

949-632-7727
Karen@karensunday.com

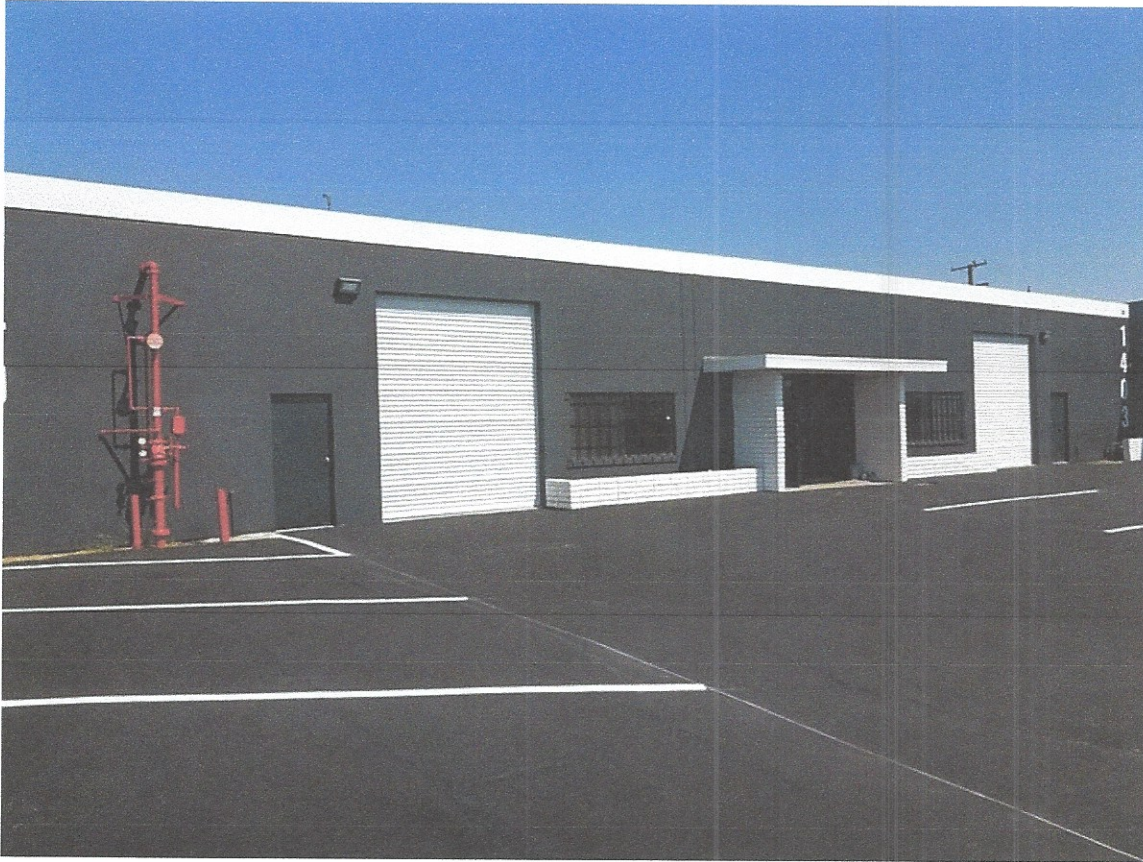
Broker ID #00870655



**KAREN SUNDAY
& ASSOCIATES, INC.**
LIFE IS FULL OF LEASING. I NEGOTIATE WELL!

23 Corporate Plaza Drive | Suite 150 | Newport Beach | CA 92660

1401-1403 East Borchard Avenue, Santa Ana, CA



For Sublease- large Industrial building- Lease expires December 31, 2023

Tenant will sublease half or all of the building Suites are side by, contiguous see floorplan

Square Ft: Total space is 7,875 sq. ft. – divisible in half to 3,938 sq. ft. each suite

Approx. 1000 ft. of office space and Large fenced yard in the front of the space for approximately 12 parking stalls. Parking: Free parking-2:1- How to tour: Call to show

Type: Industrial building—Very clean, has Fire sprinklers

400 amp and 200 amp panel, 3 phase power, 2 grade level truck doors

Asking rent: 1.60 ft. modified gross - Building

Tenant pays electric, gas and janitorial and water

Two (2) restrooms on either side, Men/Women's Restrooms.

Great Location off the 55 freeway –

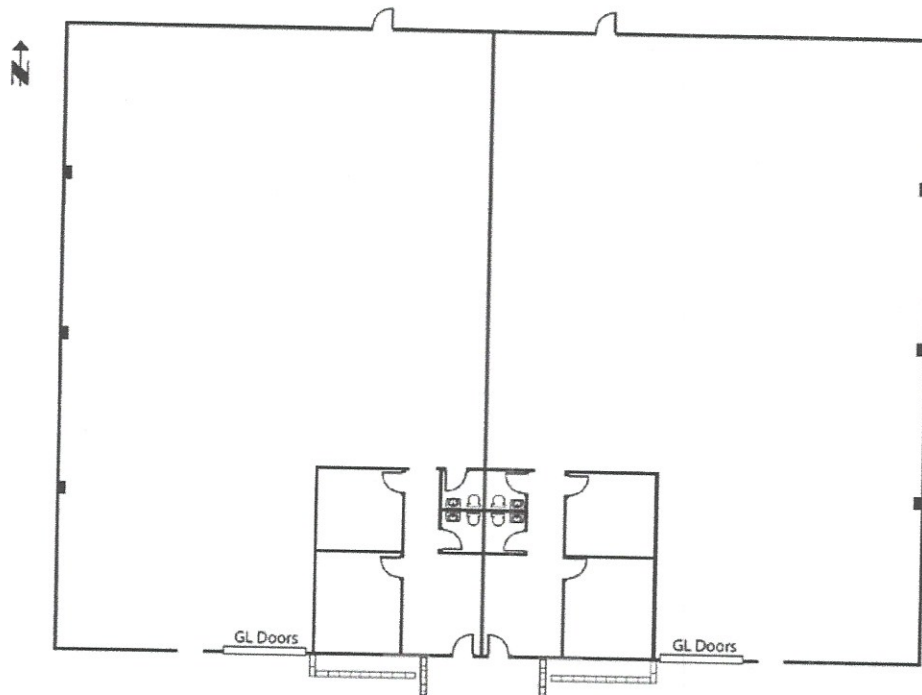
Very nice new inside bldg.- call Karen A. Sunday & Associates, Inc. 01883124 Broker License-

To view additional listings visit www.KarenSunday.com

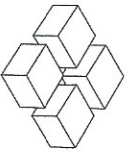
FREE STANDING INDUSTRIAL



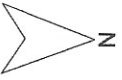
7,875 SF FOR SUBLEASE



To view additional listings visit www.KarenSunday.com



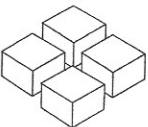
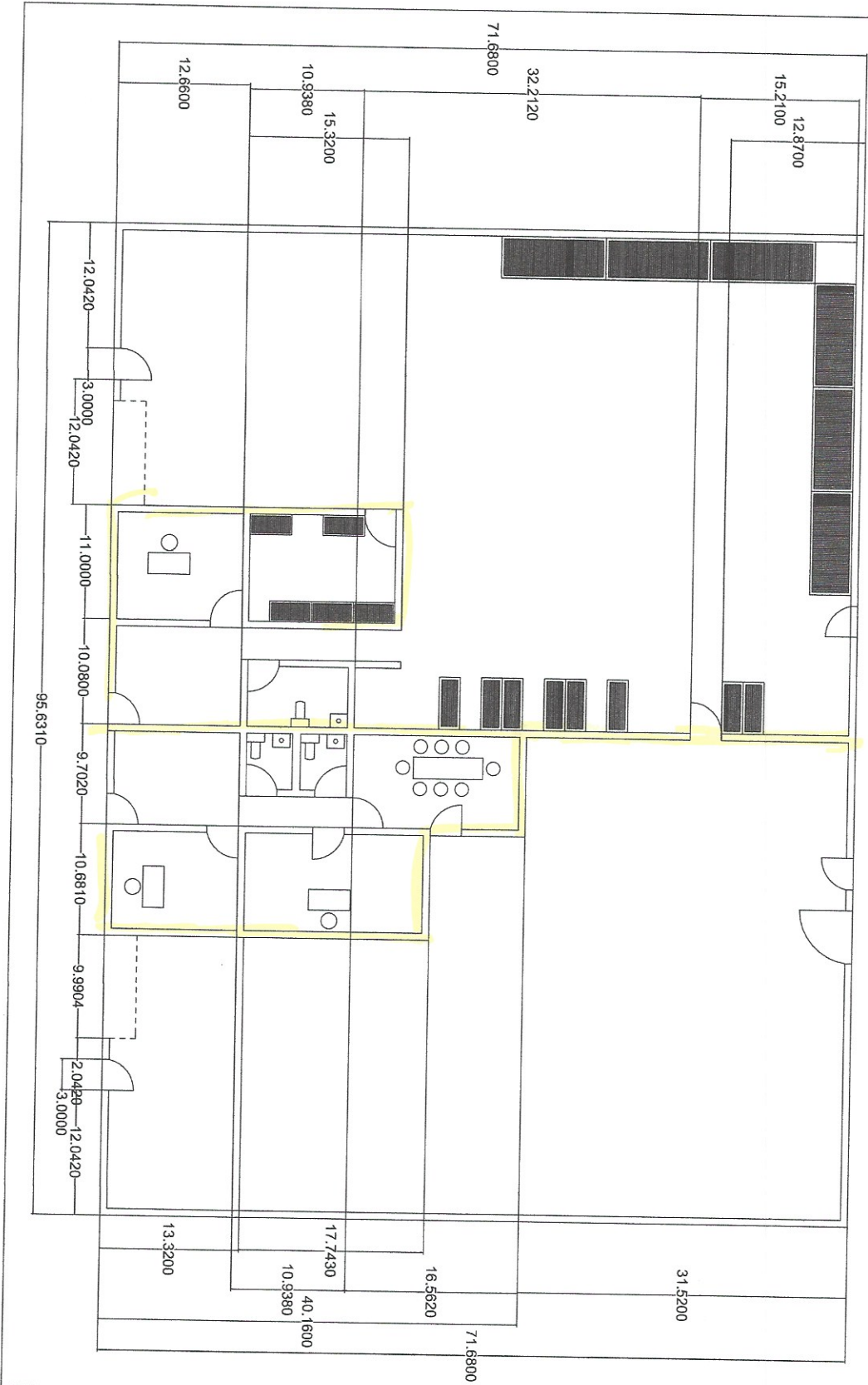
YUPANA



Address 1: 1401 E Borchard Avenue, Santa Ana, CA 92705
Address 2: 1043 E Borchard Avenue, Santa Ana, CA 92705

1401

1403



YUPANA

SHEET TITLE

Santa Ana's Office

SHEET NUMBER

L-1