

91 THIRD AVENUE



SPACE DETAILS

LOCATION

Northeast corner of East 12th Street

APPROXIMATE SIZE

Ground Floor	3,500 SF
Basement	1,800 SF
Total	5,300 SF

POSSESSION

Immediate

TERM

Long term

FRONTAGE

76 FT on Third Avenue

52 FT on East 12th Street

SITE STATUS

Formerly a portion of Basics Plus

NEIGHBORS

The Smith, Westside Market, Loews Village Movie Theater, Kiehl's, Shake Shack, The Ainsworth, The Penny Farthing, Bluemercury and the Brazen Fox

COMMENTS

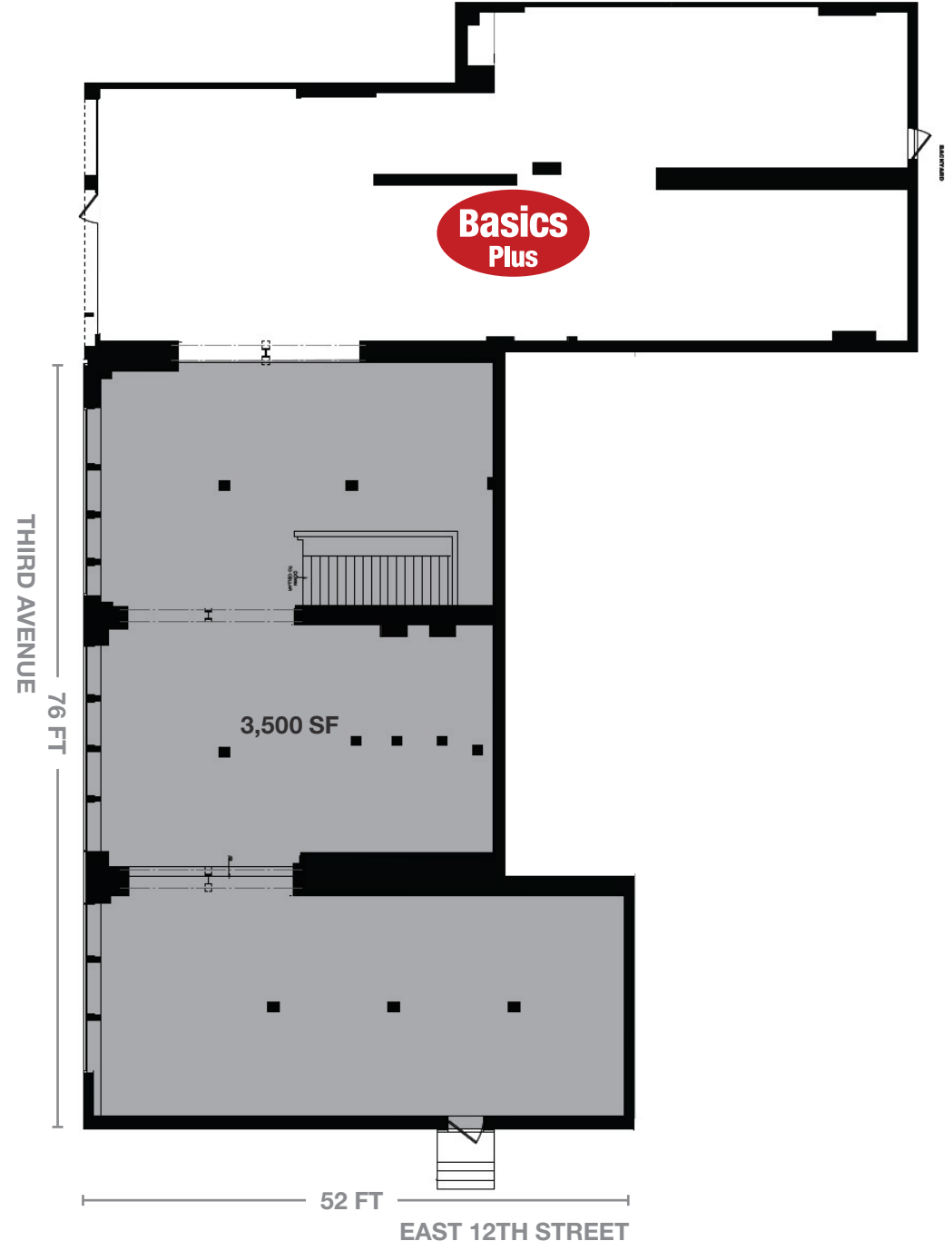
Space can be vented for cooking

Expansive corner space in the East Village surround by restaurants, bars, cosmetic and service tenants

Bustling neighborhood steps from Union Square

In close proximity to the **4** **5** **6** **N** **Q** **R** **W** and **L** subway lines

GROUND FLOOR



AREA RETAIL



CONTACT EXCLUSIVE AGENTS

GARY ALTERMAN
212.916.3367
gary.alterman@ngkf.com

CARLY GELLER
212.309.2829
carly.geller@ngkf.com



NGKF.COM

© 2019 NEWMARK KNIGHT FRANK RETAIL. The information contained herein has been obtained from sources deemed reliable but has not been verified and no guarantee, warranty or representation, either express or implied, is made with respect to such information. Terms of sale or lease and availability are subject to change or withdrawal without notice.