



**Medical Office Space For Lease**

**Property Highlights**

- Located in Totem Lake in Kirkland, just off 1-405.
- Immediately adjacent to the Evergreen Hospital Medical Center.
- Located in Kirkland’s densely populated medical market.

**Demographics**

**2015 Population**

1 Mile	12,519
3 Mile	82,113
5 Mile	213,431

**2015 Average Household Income**

1 Mile	\$107,023
3 Mile	\$123,481
5 Mile	\$125,548



- Eight buildings, consisting of 75,807 SF.
- Built in 1972 and 2003.
- Total occupied sf: 71,375 SF (94%).
- 368 surface parking spaces available.



AVAILABLE UNITS:

Suite	Sq. Ft.	Price
B50	800 SF	\$23/SF + NNN
C50	2,463 SF	\$23/SF + NNN
D10	1,169 SF	\$23/SF + NNN

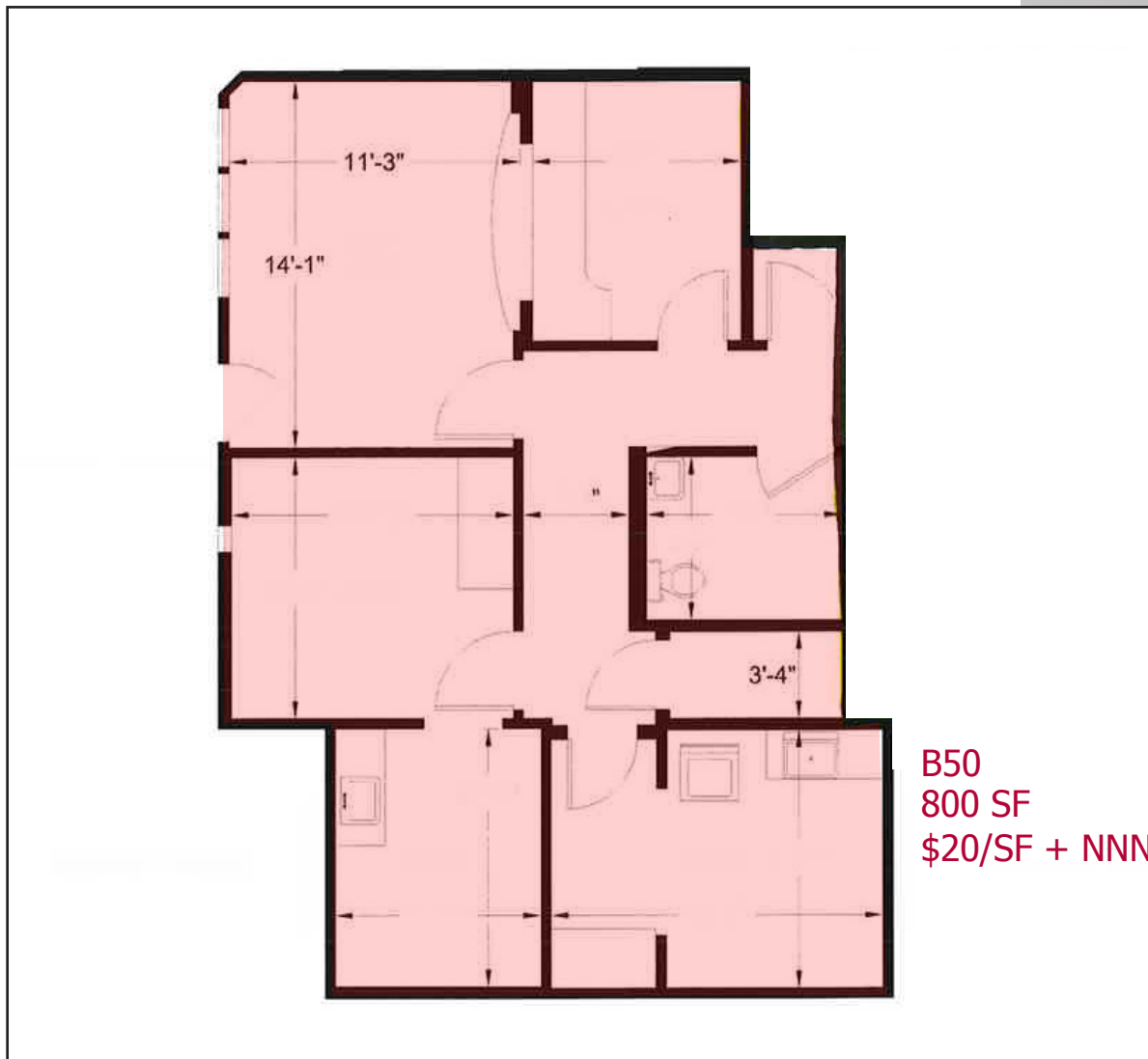




JSH | PROPERTIES, INC.

# EVERGREEN PROFESSIONAL PLAZA

12911 120TH AVENUE NE | KIRKLAND, WA 98034



B50  
800 SF  
\$20/SF + NNN



**C50**  
**2,463 SF**  
**\$22/SF + NNN**

Adjacent Suite

