



Property Features

- 3,557 SF
- Unique, historic building with 12' ceilings on first floor
- Large kitchen area
- 46 parking spaces on site
- 43,000 VPD – Midlothian Turnpike

Join Nearby Retailers



Demographics

	1 Mile	3 Miles	5 Miles
Population	5,513	45,153	104,314
No. of Households	2,255	17,367	39,554
Avg. HH Income	\$109,425	\$128,584	\$118,38
Daytime Population	3,469	28,730	48,504

For more information, contact:

DAVID CRAWFORD

Vice President

804 697 3446

david.crawford@thalhimer.com

Thalhimer Center
11100 W. Broad Street
Glen Allen, VA 23060
www.thalhimer.com



THALHIMER

RETAIL FOR SALE
13310 Midlothian Turnpike
Chesterfield County, Virginia



For more information, contact:

DAVID CRAWFORD

Vice President

804 697 3446

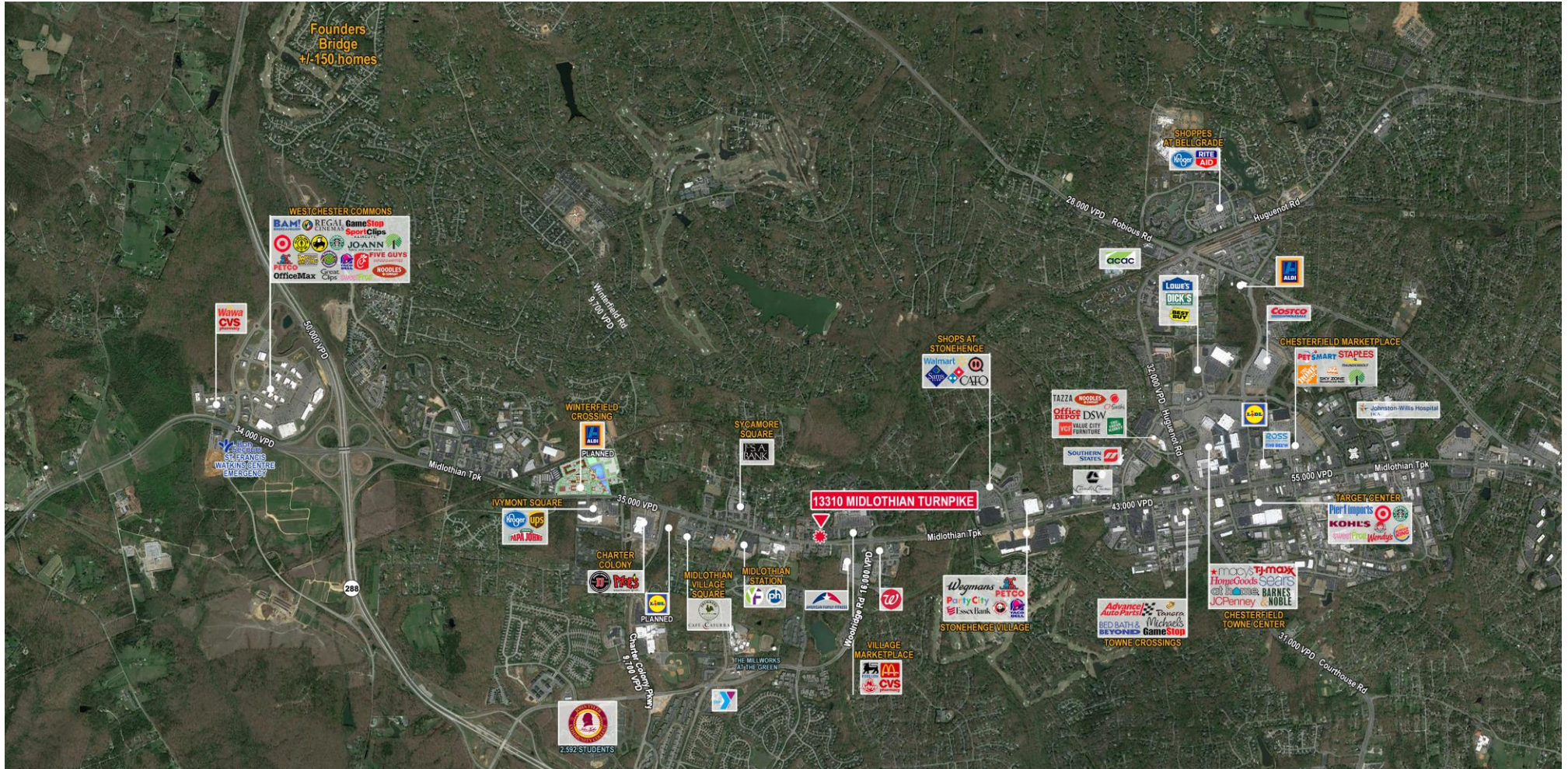
david.crawford@thalhimer.com

Thalhimer Center
11100 W. Broad Street
Glen Allen, VA 23060
www.thalhimer.com

Independently Owned and Operated / A Member of the Cushman & Wakefield Alliance

Cushman & Wakefield | Thalhimer © 2015. No warranty or representation, express or implied, is made to the accuracy or completeness of the information contained herein, and same is submitted subject to errors, omissions, change of price, rental or other conditions, withdrawal without notice, and to any special listing conditions imposed by the property owner(s). As applicable, we make no representation as to the condition of the property (or properties) in question.

RETAIL FOR SALE
13310 Midlothian Turnpike
 Chesterfield County, Virginia



For more information, contact:

DAVID CRAWFORD
 Vice President
 804 697 3446
david.crawford@thalhimer.com

Thalhimer Center
 11100 W. Broad Street
 Glen Allen, VA 23060
www.thalhimer.com