

MIDTOWN

KING STREET | CHARLESTON, SC

For Lease

**CLASS A
OFFICE SPACE**

**3,394 - 4,400 SF
AVAILABLE**



MARK MATTISON, SIOR, CCIM
843 720 7505 DIRECT
mark.mattison@colliers.com

PETER FENNELLY, SIOR, MCR, SLCR
843 720 7500 DIRECT
peter.fennelly@colliers.com

Colliers
INTERNATIONAL



Holiday Inn



**398-Space
Garage**

Upper King
1/2 mile of
restaurants &
shops



**HYATT
PLACE**



*The
Ordinary*



Felix



**THE
GROCERY**

1.7 Mile
Low Line Park
(Planned)

Bi-Lo
Grocery
Store



**REVELATOR
COFFEE COMPANY**



drybar



**HYATT
house**



**COURIER
SQUARE**
Planned Mixed-Use
Development

Sterling Hall
Banquet Space
8,500 SF



**Colliers
INTERNATIONAL**



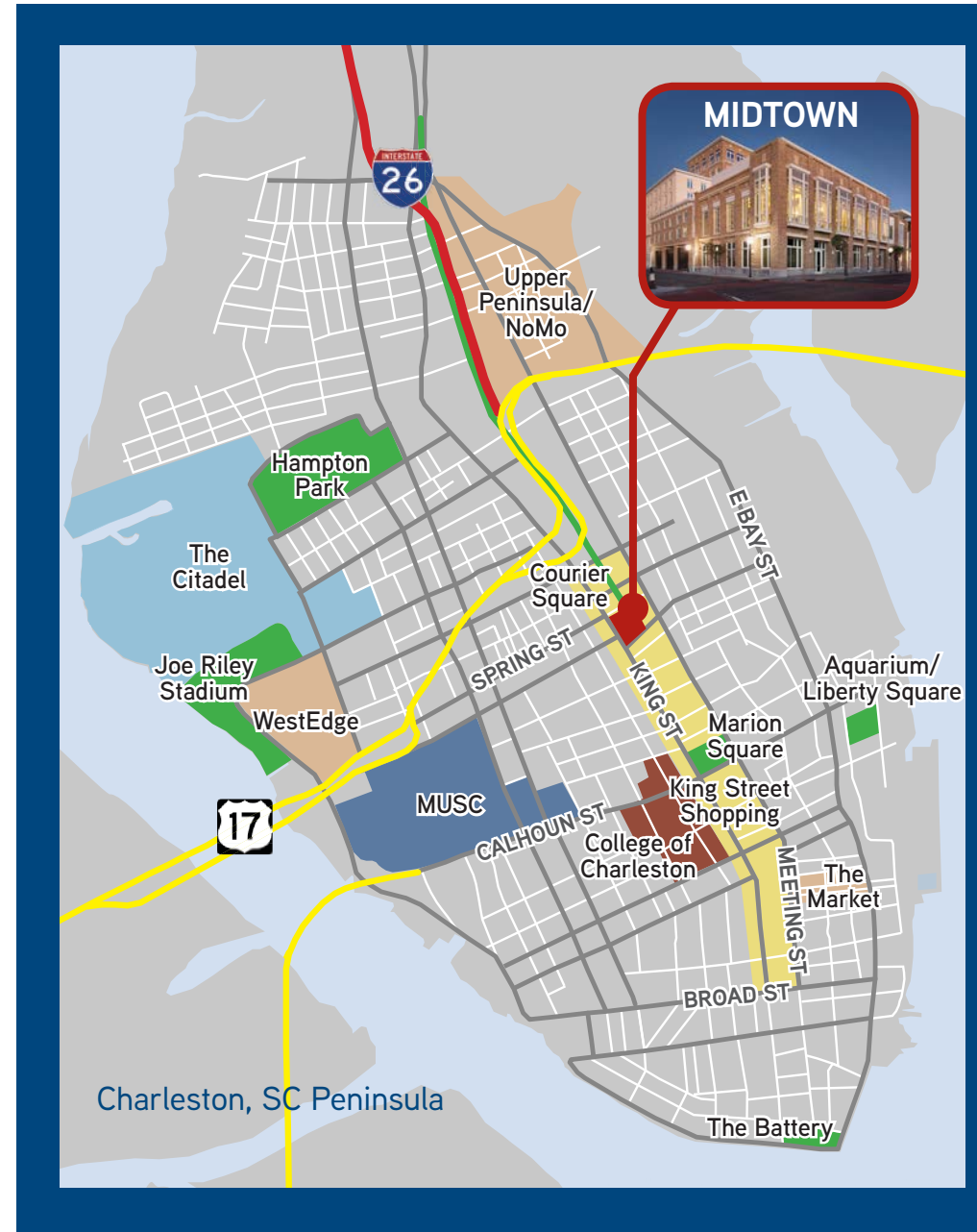
**the
Alley**
EAT • DRINK • BOWL



A SOUGHT AFTER WORK ENVIRONMENT

- Centrally located on the Peninsula on Upper King, an area that is booming with new restaurants, hotels, multifamily and shops.
- Easily accessible; just a 1/4 mile from I-26 and Highway 17.
- Adjacent to 398-space public parking garage.
- Walking distance to a dynamic mix of casual to white linen dining options for employees and business clients.
- More than 300 retailers, unique local boutiques and services are on King Street.
- Bordering Low Line Park, a 1.7 mile planned greenway beginning at Midtown and extending north to the Upper Peninsula.
- Second, third and fourth floor office suites with views of downtown Charleston.
- Conference/meeting facilities available at adjacent Hyatt hotel.

**ICONIC ADDRESS.
NEARBY AMENITIES.
BRAND-NEW.**





MIDTOWN

Port Terminal

Courier Square

Marion Square

Gaillard Performance Hall

0.25 MILES

0.5 MILES

INTERSTATE 26

17

MUSC

1

1

24

1

2

3

4

6

5

7

9

10

8

12

13

16

15

17

18

19

RADCLIFFE

WARREN

VANDERHORST

MEETING ST

COLUMBUS

KING ST

SPRING ST

CANNON ST

MORRIS ST

RUTLEDGE AVE

ASHLEY AVE

WOOLFE REID

MARY ANN

JOHN

CALHOUN ST

EIBAY ST

10

11

8

P

P

2

9

5

6

11

3

1

2

3

4

20

21

22

10

11

9

8

7

12

6

7

5

23

A WALKER'S PARADISE

DINING / ENTERTAINMENT

- | | | |
|---------------------------|------------------------------|-------------------------------|
| 1 Butcher & Bee | 9 The Alley | 17 The MacIntosh |
| 2 D'Allesandro's | 10 Artisan Meat Share | 18 Basil |
| 3 Trattoria Lucca | 11 The Ordinary | 19 O-Ku |
| 4 Xiao Bao Biscuit | 12 The Grocery | 20 Rue de Jean |
| 5 Lana | 13 Hom | 21 Coast |
| 6 Fuel | 14 Indaco | 22 Victor Social Club |
| 7 Hominy Grill | 15 Stars | 23 Carolina Ale House |
| 8 Five Loaves Cafe | 16 492 | 24 Mercantile and Mash |

ACCOMMODATIONS

- | | | |
|------------------------------|--------------------------|------------------------------|
| 1 Hyatt Place | 5 Holiday Inn | 9 Embassy Suites |
| 2 Hyatt House | 6 Homewood Suites | 10 Hampton Inn |
| 3 The King (Planned) | 7 Francis Marion | 11 Dewberry Inn |
| 4 Firetower (Planned) | 8 Bennett | 12 Marriott Courtyard |

CONVENIENCE

- | | | |
|--------------------------------|------------------------------|-----------------------|
| 1 Climbing Gym | 5 Walgreens | 9 Gas/C-Store |
| 2 Bi-Lo Grocery | 6 First Citizens Bank | 10 Post Office |
| 3 Charleston Power Yoga | 7 Gas/C-Store | 11 Gas/C-Store |
| 4 A&E Digital Printing | 8 Enterprise | |

WALK SCORE: 93

Walk score provided by www.walkscore.com.
Most errands can be done without a car.





398-Space
Public Parking Deck



KING ST

562 King Street
Suite 200
3,487 SF



550 King Street
Suite 200 - 4,400 SF
Suite 400 - 3,394 SF

MAKE THE MOVE TO MIDTOWN

MIDTOWN | SITE PLAN



*Map not drawn to scale.
For illustrative purposes only.

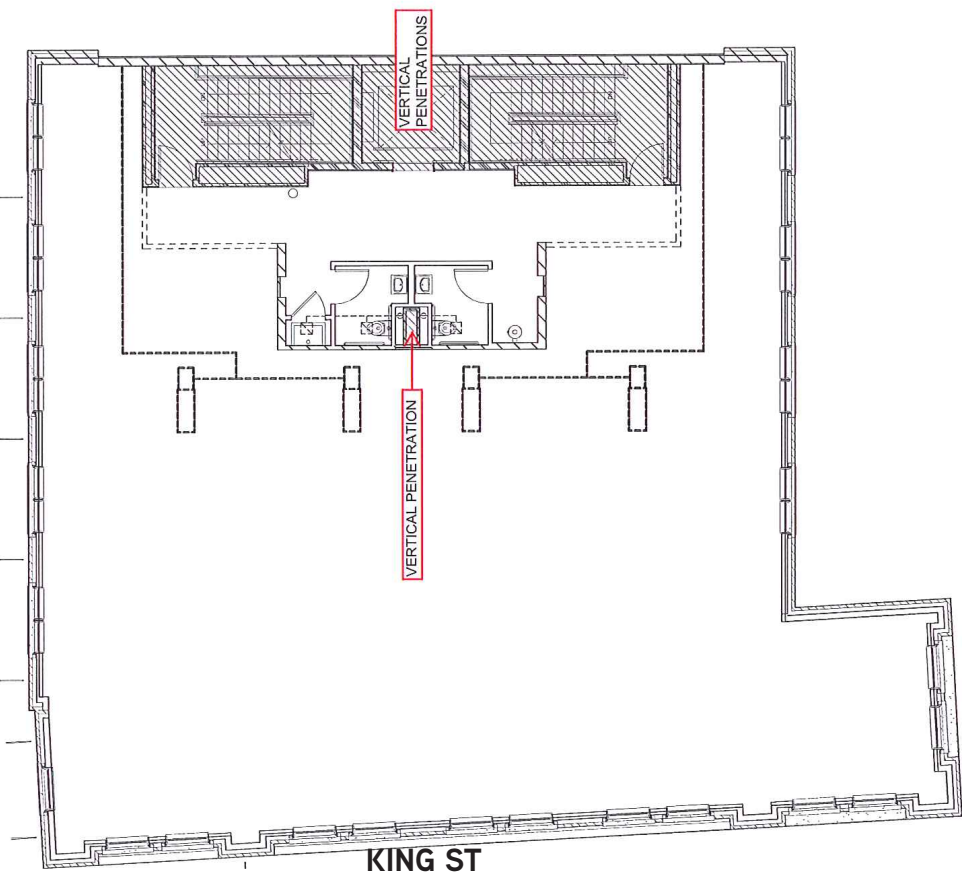
550 King



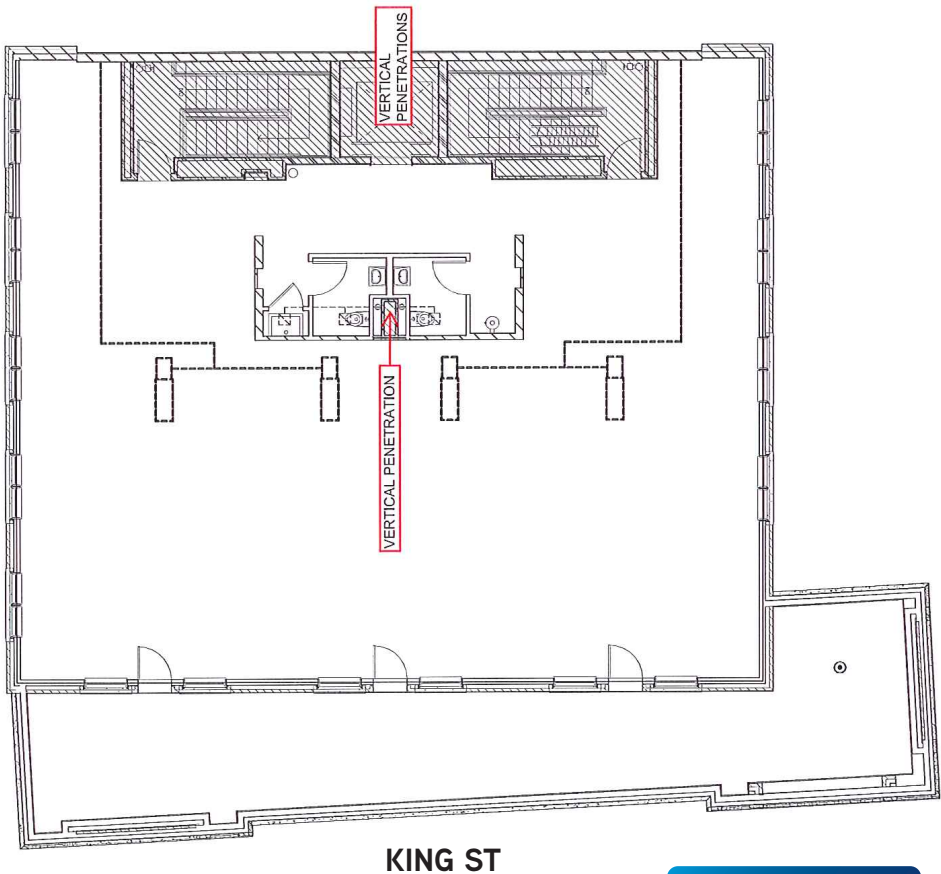
550 KING STREET

2ND, 3RD & 4TH FLOORS AVAILABLE

550 KING
2ND FLOOR - SUITE 200
4,400 SF



550 KING
4TH FLOOR - SUITE 400
3,394 SF + 858 SF TERRACE
(4,252 SF TOTAL)



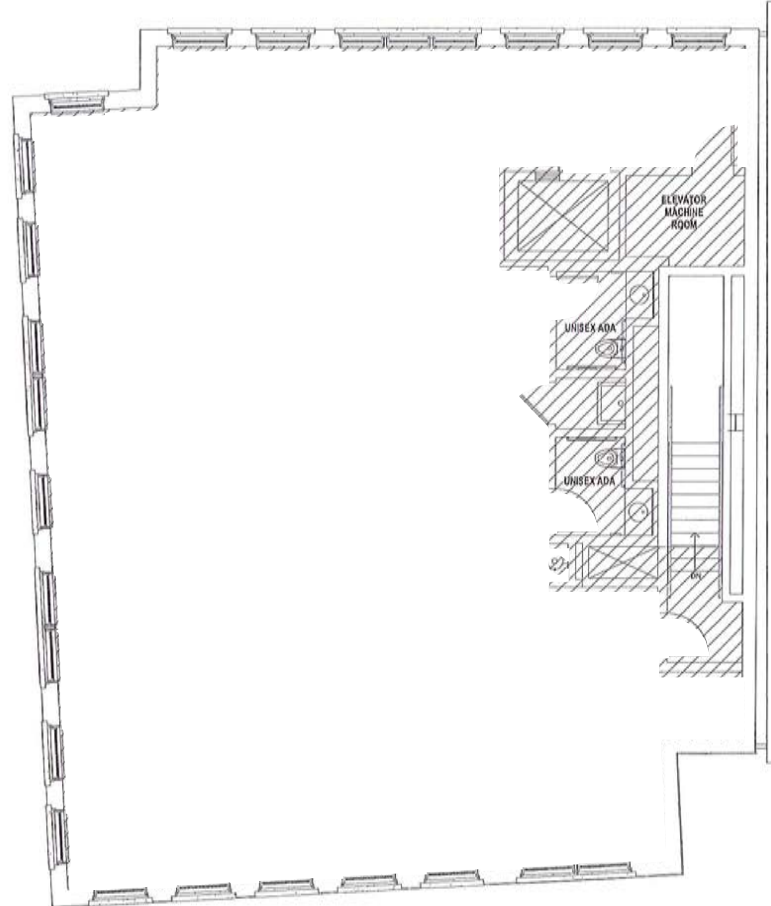
562 King



562 KING STREET

2ND FLOOR AVAILABLE

562 KING
2ND FLOOR - SUITE 200
3,487 SF



KING ST

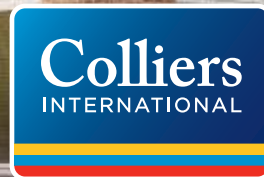


Learn More

OFFICE
OPPORTUNITIES AT
MIDTOWN

MARK MATTISON, SIOR, CCIM
843 720 7505 DIRECT
mark.mattison@colliers.com

PETER FENNELLY, SIOR, MCR, SLCR
843 720 7500 DIRECT
peter.fennelly@colliers.com



This document has been prepared by Colliers International and Owner for advertising and general information only. Colliers International and Owner make no guarantees, representations or warranties of any kind, expressed or implied, regarding the information including, but not limited to, warranties of content, accuracy and reliability. Any interested party should undertake their own inquiries as to the accuracy of the information. Colliers International and Owner exclude unequivocally all inferred or implied terms, conditions and warranties arising out of this document and excludes all liability for loss and damages arising there from. This publication is the copyrighted property of Colliers International and/or its licensor(s). ©2016. All rights reserved.

COLLIERS INTERNATIONAL
25 Calhoun Street, Suite 220
Charleston, SC 29401
www.colliers.com/southcarolina