

Publix #0851 - Publix at the Acreage

7070 Seminole Pratt Whitney Road
Loxahatchee, FL 33470
Lat 26.781, Long -80.292

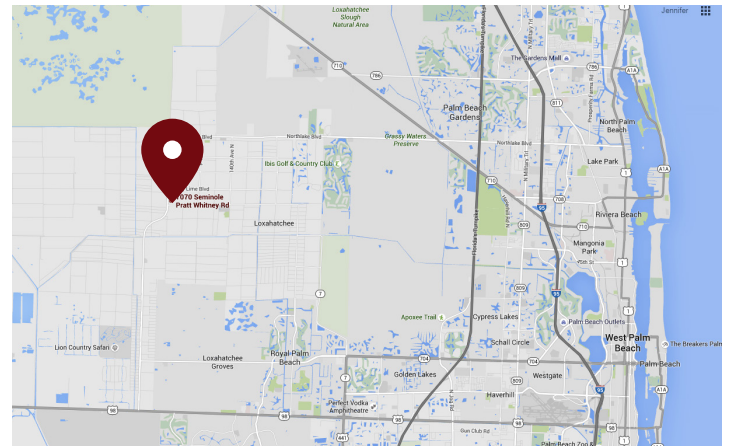
FOR LEASE



1,050 SF AVAILABLE

PROPERTY HIGHLIGHTS

- Palm Beach County Market
- Primary Retail Destination for Surrounding Area
- Excellent Local Traffic
- Publix-Anchored Center
- Outparcels Include: Burger King, National City Bank, and Circle K Gas Station



DEMOGRAPHICS	1 Mile	3 Miles	5 Miles
Total Population	4,366	22,845	45,535
Daytime Population	3,021	16,442	32,842
Total Households	1,195	7,069	14,500
Avg. HH Income	\$102,539	\$105,065	\$105,412

Data provided by Placer Labs Inc. (www.placer.ai) & Esri

Michael Rautbord

561.447.8529 | mrautbord@crossmanco.com
890 North Federal Highway, Suite 434, Boca Raton, FL

Licensed Real Estate Broker. No warranty expressed or implied has been made to the accuracy of the information provided herein, no liability assumed for error or omission.



www.crossmanco.com

Publix #0851 - Publix at the Acreage

7070 Seminole Pratt Whitney Road
Loxahatchee, FL 33470
Lat 26.781, Long -80.292

SITE PLAN



Suite	Tenant	Size
21	Publix	51,674
1	Domino's Pizza	1,300
2	Loxahatchee Ice Cream Co	1,300
3	De Fabrique Aesthetic Dental	1,300
4	Subway	975
5	Pinnacle Family Health	975
6-7	Pascalli's Ristorante	2,090
8	Dry Cleaners	1,750
9	AVAILABLE	1,050
10-16	Moore's True Value	7,215
18	Acreage Veterinary Clinic	1,200
19	H & R Block	1,400
20	Publix Liquor	1,200
22	Lee Nails	1,400
23	American Blue Pool Supplies	1,264
24	Supercuts	1,050
25	Postal Center	1,050
26-27	AT&T Wireless	2,106
28	China Sky	1,050
29-31	Kocomos Island Grill	3,138
OP 1	Burger King	1 Acre
OP 2	PNC Bank	1 Acre

TOTAL 84,487



Michael Rautbord

561.447.8529 | mrautbord@crossmanco.com
890 North Federal Highway, Suite 434, Boca Raton, FL

Licensed Real Estate Broker. No warranty expressed or implied has been made to the accuracy of the information provided herein, no liability assumed for error or omission.



Crossman & Company

www.crossmanco.com

Publix #0851 - Publix at the Acreage

7070 Seminole Pratt Whitney Road
Loxahatchee, FL 33470
Lat 26.781, Long -80.292

FOOT TRAFFIC OVERVIEW

EST. # OF CUSTOMERS ANNUALLY



EST. # OF VISITS ANNUALLY



AVG. VISITS / CUSTOMER



AVG. LENGTH-OF-STAY / VISIT



TOP 3 DAYS



Saturday	242,082
Sunday	221,425
Friday	219,913

OF VISITS

TOP 3 HOURS

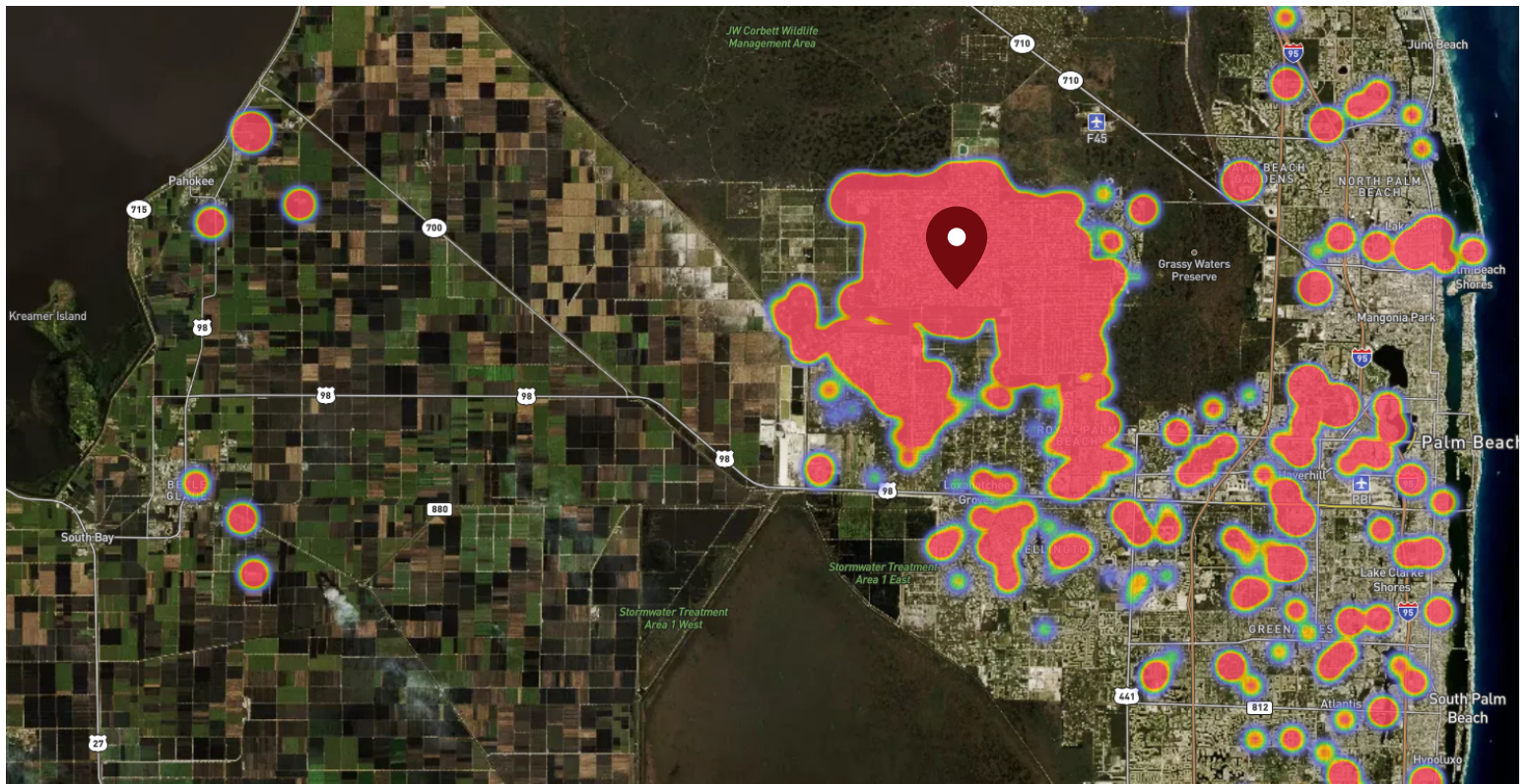


6-7 PM	245,412
5-6 PM	243,308
4-5 PM	225,273

OF VISITS

Data provided by Placer Labs Inc. (www.placer.ai) Nov 1, 2019 - Oct 31, 2020

SITE VISIT DENSITY



Red, orange, and yellow colors represent the location of 60% of site visitors

Data provided by Placer Labs Inc. (www.placer.ai)

Michael Rautbord

561.447.8529 | mroutbord@crossmanco.com
890 North Federal Highway, Suite 434, Boca Raton, FL

Licensed Real Estate Broker. No warranty expressed or implied has been made to the accuracy of the information provided herein, no liability assumed for error or omission.



www.crossmanco.com