



The Cambridge Business Plaza

15402 W Sage St, Victorville, CA 92392



James Pedregon

MGR Real Estate, Inc.
3800 Concourse, Ontario, CA 91764
jpedregon@mgrealestate.com
(760) 792-7502



The Cambridge Business Plaza

\$12.00 /SF/Yr

DESCRIPTION

Bring your business to this well maintained professional office building with ample parking, located in the heart of the Victorville Civic Center. Great opportunity for satellite location, administrative office, startup business, attorney office, tax services, training or small class environment i.e. Traffic School or Employment Training. This building is just walking distance to Victorville Courthouse and City Hall making it very convenient for legal and administrative uses. Unit located south west corner, upstairs with street visibility. Common Men's and Women's Restrooms on the 1st and 2nd floors. Manageable size suites make this a great option for full time or satellite office locations. Centrally located and easy to access Interstate I 15 Fwy. Call to schedule a showing!

SPACES

Unit...

- Ample Parking
- Close to City Hall and Victorville Courthouse
- Close to Public Transit



Rental Rate:	\$12.00 /SF/Yr
Property Type:	Office
Building Class:	B
Rentable Building Area:	9,969 SF
Year Built:	1985
Walk Score ®:	48 (Car-Dependent)
Transit Score ®:	36 (Some Transit)
Rental Rate Mo:	\$1.00 USD/SF/Mo

2nd Floor Ste 207

Space Available	661 SF
Rental Rate	\$12.00 /SF/Yr
Date Available	Now
Service Type	Modified Gross
Built Out As	Standard Office
Space Type	Relet
Space Use	Office
Lease Term	1 - 5 Years



15402 W Sage St, Victorville, CA 92392

DESCRIPTION

Bring your business to this well maintained professional office building with ample parking, located in the heart of the Victorville Civic Center. Great opportunity for satellite location, administrative office, startup business, attorney office, tax services, training or small class environment i.e. Traffic School or Employment Training. This building is just walking distance to Victorville Courthouse and City Hall making it very convenient for legal and administrative uses. Unit located south west corner, upstairs with street visibility. Common Men's and Women's Restrooms on the 1st and 2nd floors. Manageable size suites make this a great option for full time or satellite office locations. Centrally located and easy to access Interstate I 15 Fwy. Call to schedule a showing!

SPACES

Unit 207, +/-661 Sq. Ft. Available, - Layout; Reception Area, 1 Office and back Office Storage Area.

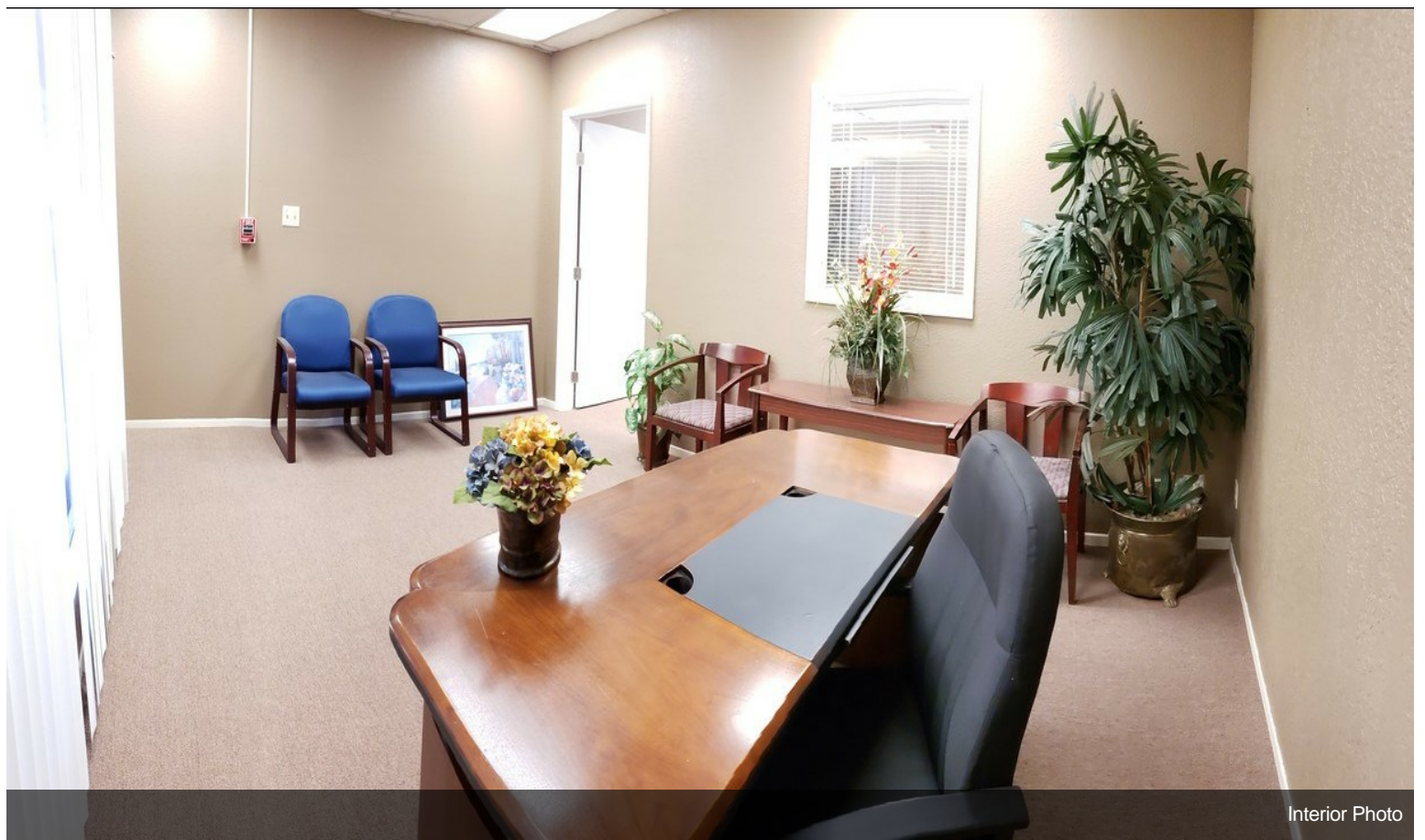
HIGHLIGHTS

- Ample Parking
- Street Frontage Zoned OP - Office Professional
- Near 15 Fwy
- Near Victorville Court House
- Near Victorville City Hall

LOCATION

Exit the 15 Fwy and Palmdale Rd, turn North then West on Palmdale Rd; North on Amargosa Rd to Sage St then West.

Property Photos



Interior Photo



Privet Office

Property Photos



Storage, Phone & Internet



Phone, Internet, Thermostat Control

Property Photos

