

# Barranca Medical Plaza

62 Corporate Park, Irvine, CA 92606



Leasing Manager  
Bryan McKenney  
(949) 478 - 0087 | LIC#01505792  
Bryan@MedWestRealty.com

Leasing Manager  
Casey P. Immel  
(949) 278 - 5376 | LIC#01312850  
Casey@MedWestRealty.com

**Now Leasing**



# Barranca Medical Plaza

62 Corporate Park, Irvine, CA 92606

## FEATURES

- 30,000 SF
- 2 Story Building
- 2 Story Atrium lobby
- Abundant Surface Parking
- Medical & Dental Suites
- High End Suite Finishes
- Professionally Managed
- Elevator Served



Leasing Manager  
Bryan McKenney  
(949) 478 - 0087 | LIC#01505792  
Bryan@MedWestRealty.com

Leasing Manager  
Casey P. Immel  
(949) 278 - 5376 | LIC#01312850  
Casey@MedWestRealty.com

**Now Leasing**



# Barranca Medical Plaza

62 Corporate Park, Irvine, CA 92606

**AERIAL VIEW:**



**Barranca  
Medical Plaza**



**Peters Canyon Channel**

**Barranca Parkway**

**Corporate Park**



Leasing Manager  
Bryan McKenney  
(949) 478 - 0087 | LIC#01505792  
Bryan@MedWestRealty.com

Leasing Manager  
Casey P. Immel  
(949) 278 - 5376 | LIC#01312850  
Casey@MedWestRealty.com

**Now Leasing**

# Barranca Medical Plaza

62 Corporate Park, Irvine, CA 92606

## SITE PLAN:



# Barranca Medical Plaza

62 Corporate Park, Irvine, CA 92606

## FLOOR PLAN

2nd Floor

## AVAILABLE SUITE:

Suite 200 - 1,710 RSF

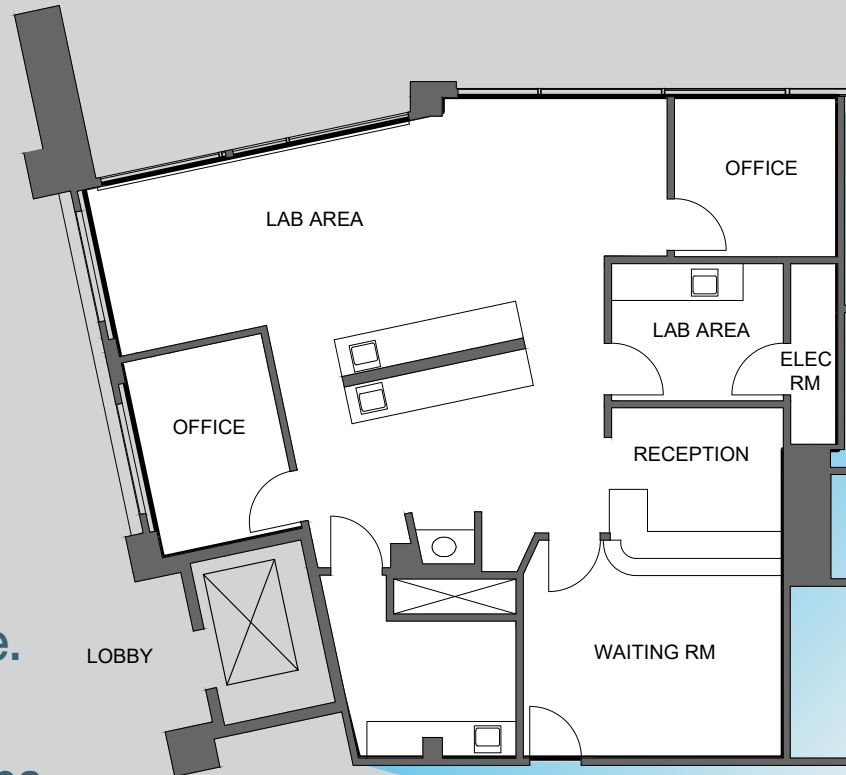
## SUITE DESCRIPTION:

Formerly an orthodontist suite  
& currently an ophthalmology suite.

Reception/Admin, Lab Area,  
2 Offices, Break Room, & Opera Area

## LEASE RATE:

\$4.25 FSG

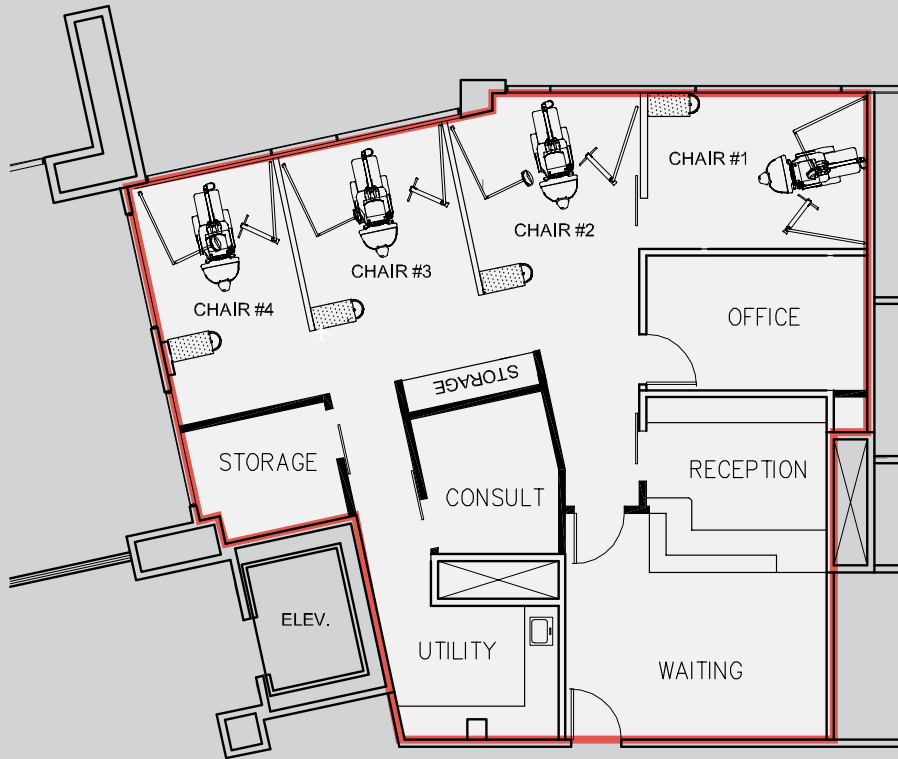




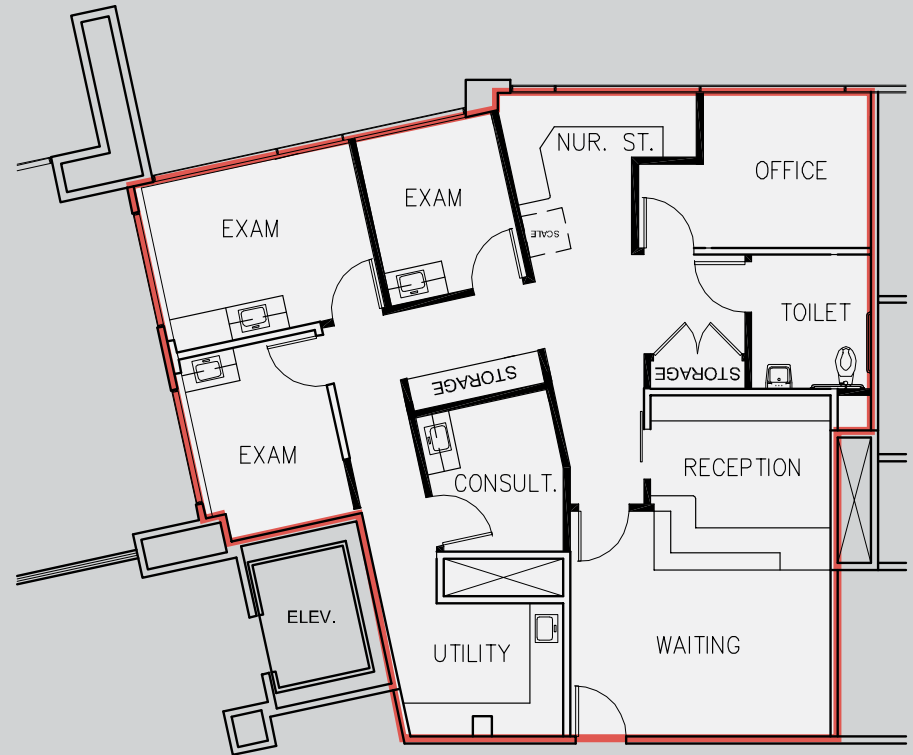
# Barranca Medical Plaza

62 Corporate Park, Irvine, CA 92606

## FLOOR PLANS



Hypothetical Dental Floor Plan



Hypothetical Medical Floor Plan

# Barranca Medical Plaza

62 Corporate Park, Irvine, CA 92606

## FLOOR PLAN

2nd Floor

### AVAILABLE SUITE:

Suite 220 - 1,955 RSF

### SUITE DESCRIPTION:

DENTAL SUITE

3 Open Bay Dental Chairs, 3 Offices,  
Lab Area, Work Station, Break Room,  
In-suite Restroom, Waiting Area,  
Reception/Admin

### LEASE RATE:

\$4.25 FSG



# Barranca Medical Plaza

62 Corporate Park, Irvine, CA 92606

## FLOOR PLAN

2nd Floor

### AVAILABLE SUITE:

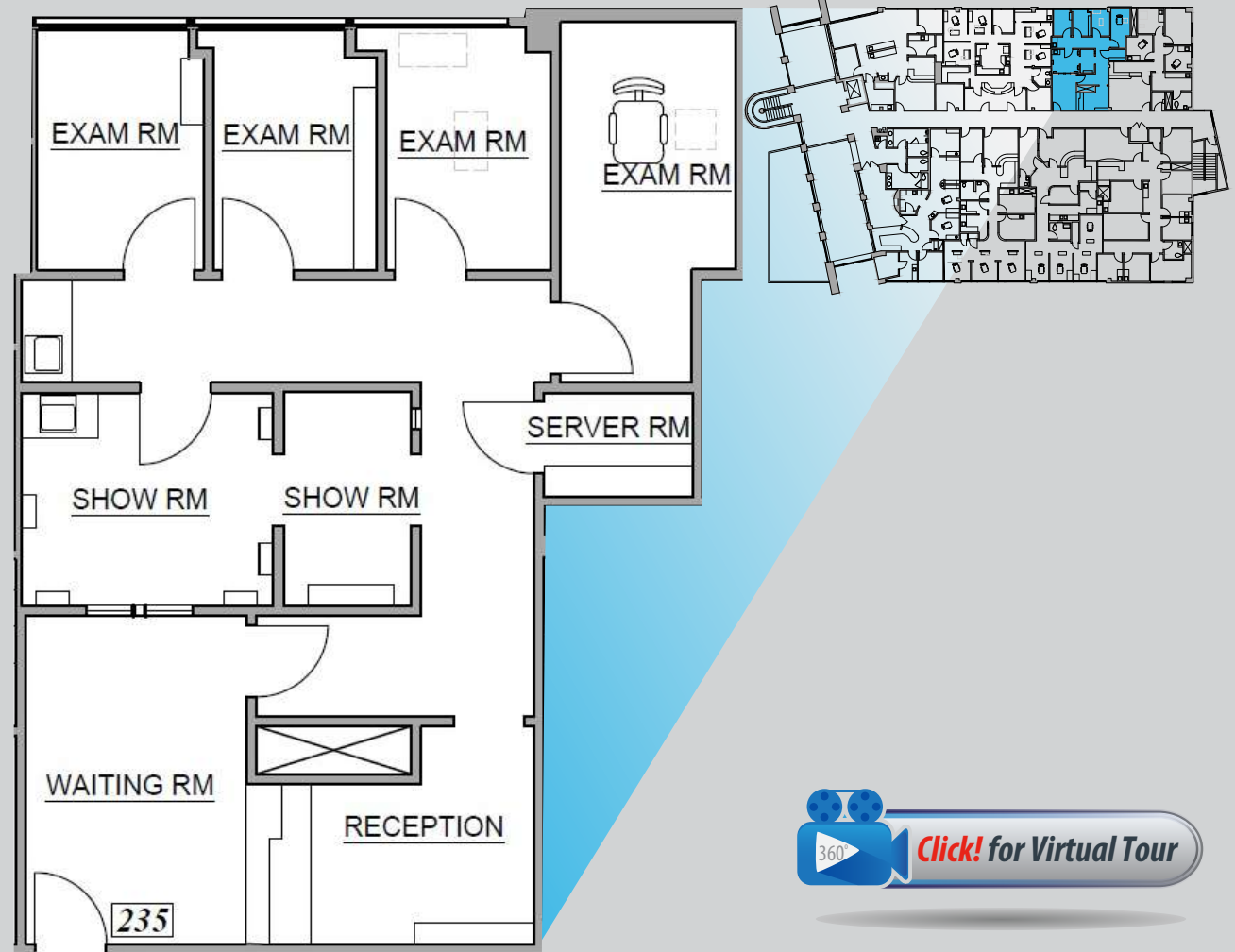
Suite 235 - 1,229 RSF

### SUITE DESCRIPTION:

4 Exam Rooms, X-Ray Room,  
Work Station, Reception/Admin

### LEASE RATE:

\$4.25 FSG

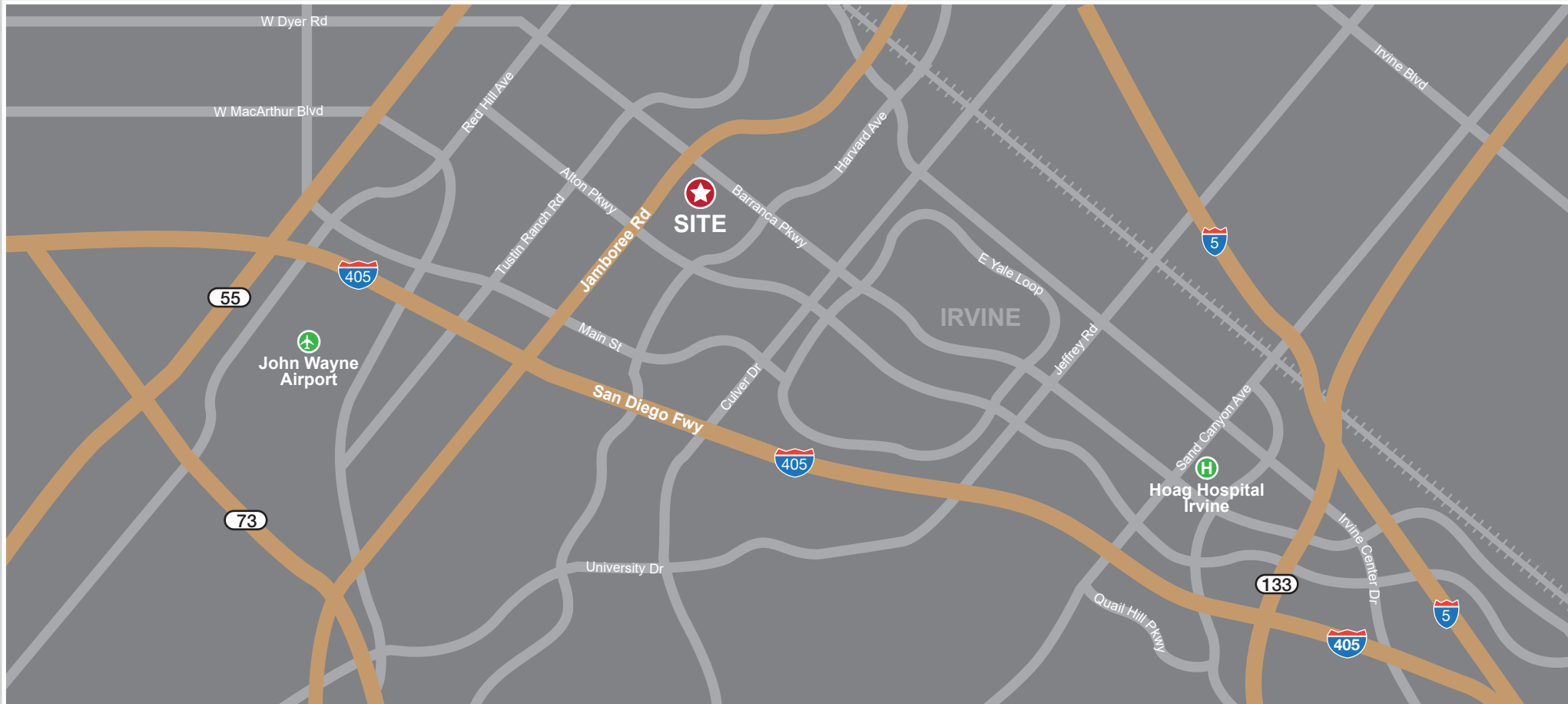




# Barranca Medical Plaza

62 Corporate Park, Irvine, CA 92606

## VICINITY MAP:



Leasing Manager  
Bryan McKenney  
(949) 478 - 0087 | LIC#01505792  
Bryan@MedWestRealty.com

Leasing Manager  
Casey P. Immel  
(949) 278 - 5376 | LIC#01312850  
Casey@MedWestRealty.com

**Now Leasing**