

AVAILABLE

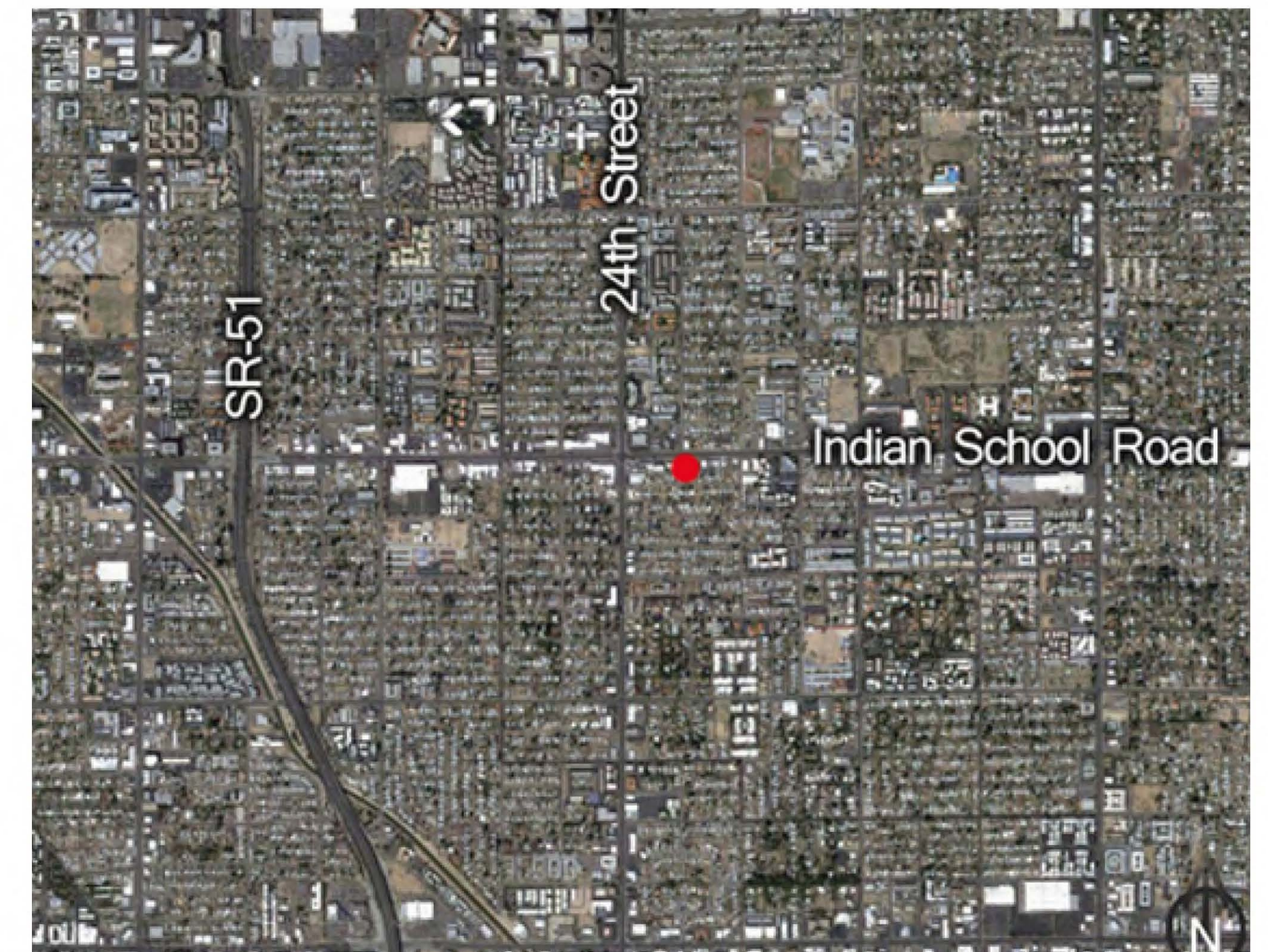
Retail/Office/Service Building

244 E. Indian School Road | Phoenix, Arizona

FOR SALE • \$1.275m

Building Size: 5,573 SF
Land Size: 16,988 SF
Parking: 18 Spaces
Zoning: C-2, Retail or Office
Signage: Large Pole Sign

Divisible to 1286 SF



ANDY MELLEN
(602)977-7500

mellen@landmarkACM.com

 **LandmarkACM**

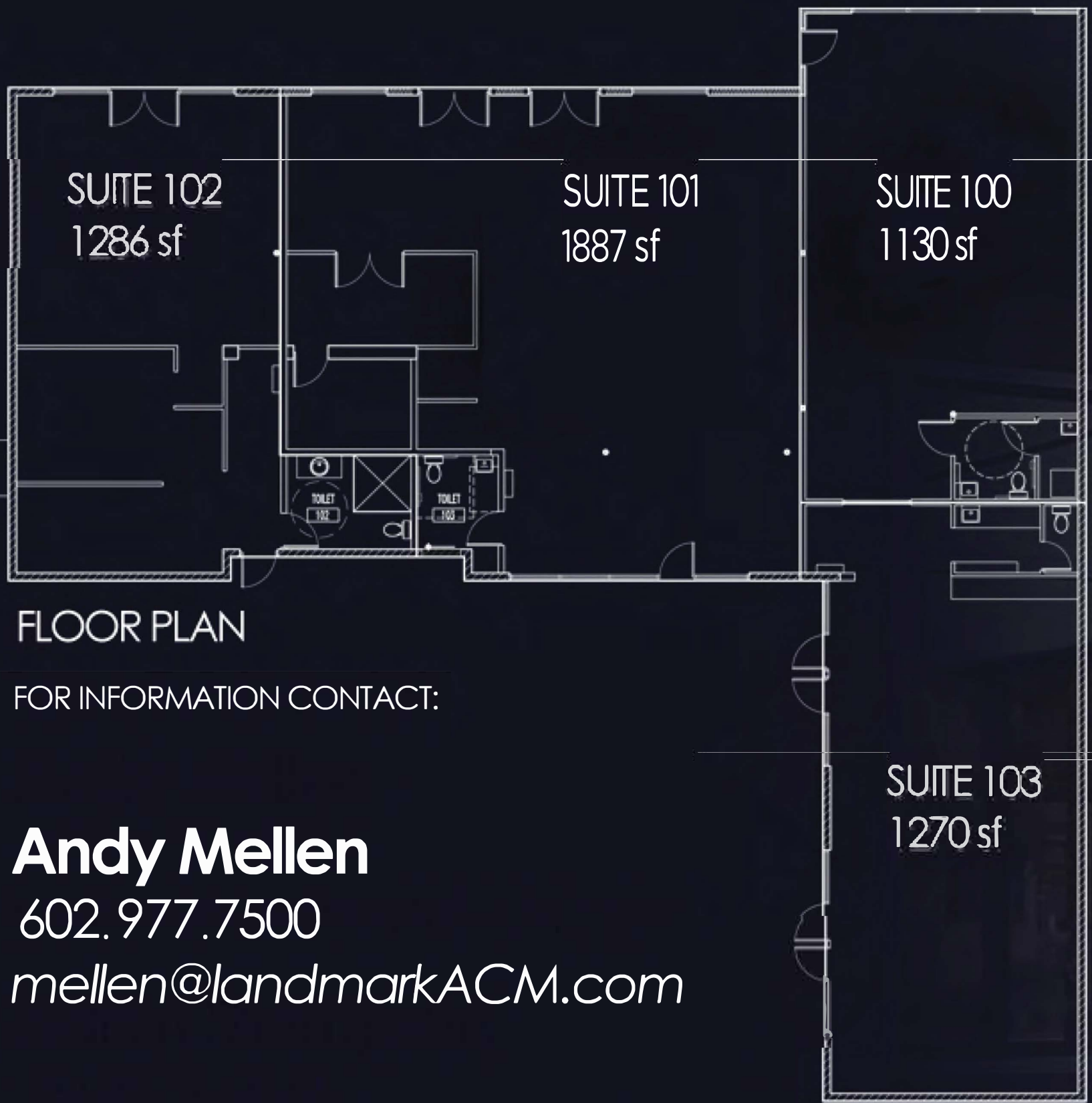
4715 N. 32nd Street, Suite 100 | Phoenix, Arizona 85018
(602) 957-9900 | FAX (602) 957-6300
www.LandmarkACM.com

2441 E. Indian School Road | Phoenix, Arizona

Demographics

Traffic Counts 41,000 vehicles per day

	1 Mile	3 Mile	5 Mile
Avg. Household Income (2006)	\$56,652	\$65,225	\$66,745
Avg. Population (2006)	24,284	175,828	358,649
Projected Population (2011 Est.)	27,885	202,200	411,175



4455 E. Camelback Rd. C-135 | Phoenix, AZ 85018
 (602) 977-7500 | (602) 677-9700
 www.landmarkacm.com

All information furnished regarding property for sale, rental or financing is from sources deemed reliable, but no warranty or representation is made to the accuracy thereof and same is submitted subject to errors, omissions, change of price, rental or other conditions prior to sale, lease or financing or withdrawal without notice. No liability of any kind is to be imposed on the broker herein.