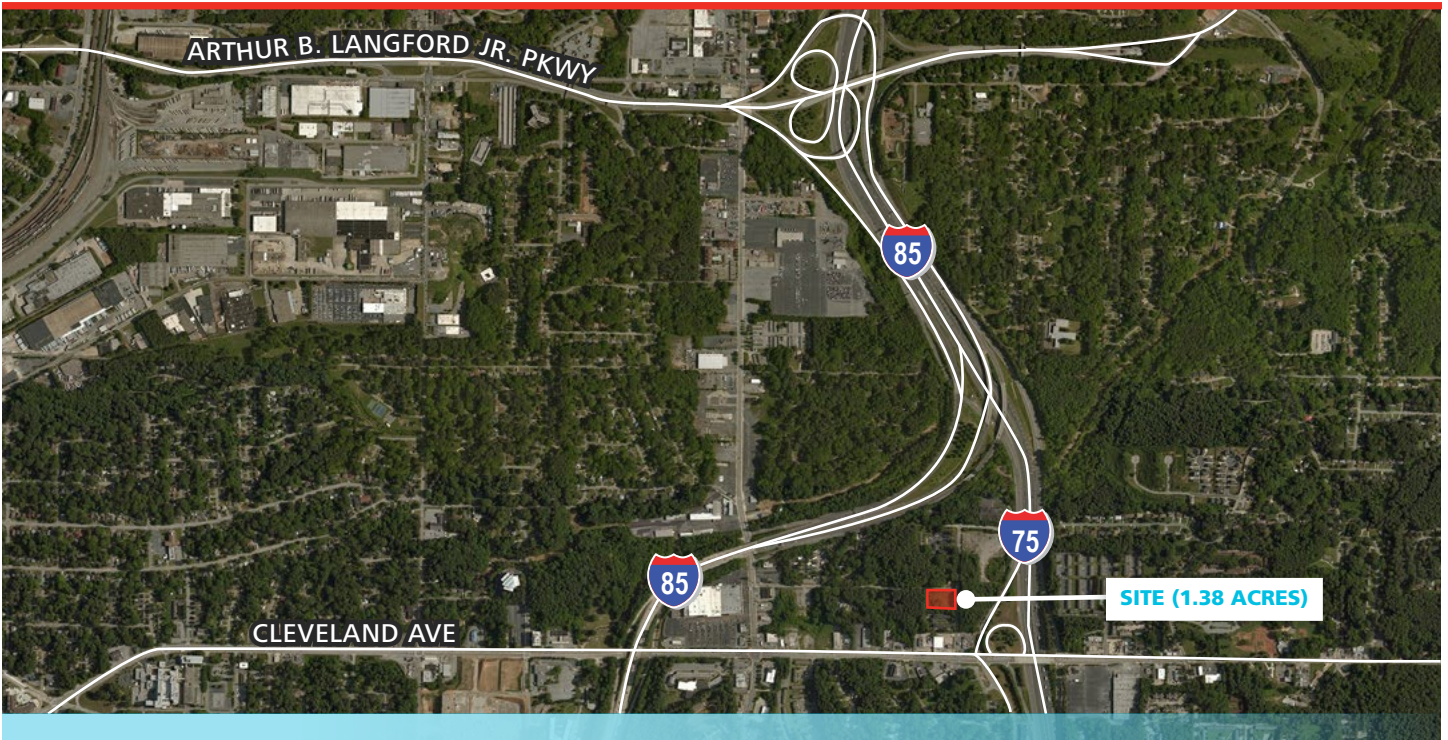


2637 Beeler Drive

Atlanta, Georgia 30316 | Fulton County

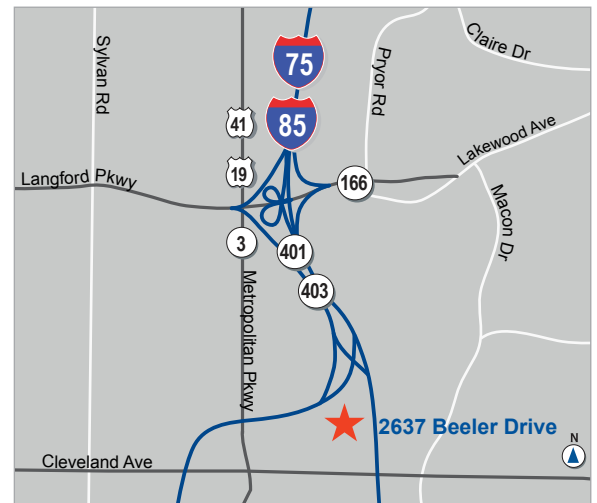


FOR SALE: 1.38 ACRES MULTIFAMILY SITE

SALE PRICE \$140,000

HIGHLIGHTS

- Two lots - 0.69 acres each
- Zoned RG-2 Multifamily
- Level topography
- Great apartment/townhome site
- Floor area ratio - 0.348



BOB GOTTLIEB
770.913.3917
bgottlieb@ackermanco.net

www.ackermanco.com

Ackerman & Co.

©2016 Ackerman & Co. All rights reserved. While we have no reason to doubt the accuracy of the information provided from sources we deem reliable, we cannot guarantee it and therefore assume no liability for errors, omissions or changes to this content.

2637 Beeler Drive

Atlanta, Georgia 30315

Multifamily Site: 1.38 Acres

PROPERTY AERIAL



BOB GOTTLIEB
770.913.3917
bgottlieb@ackermanco.net

www.ackermanco.com

Ackerman & Co.

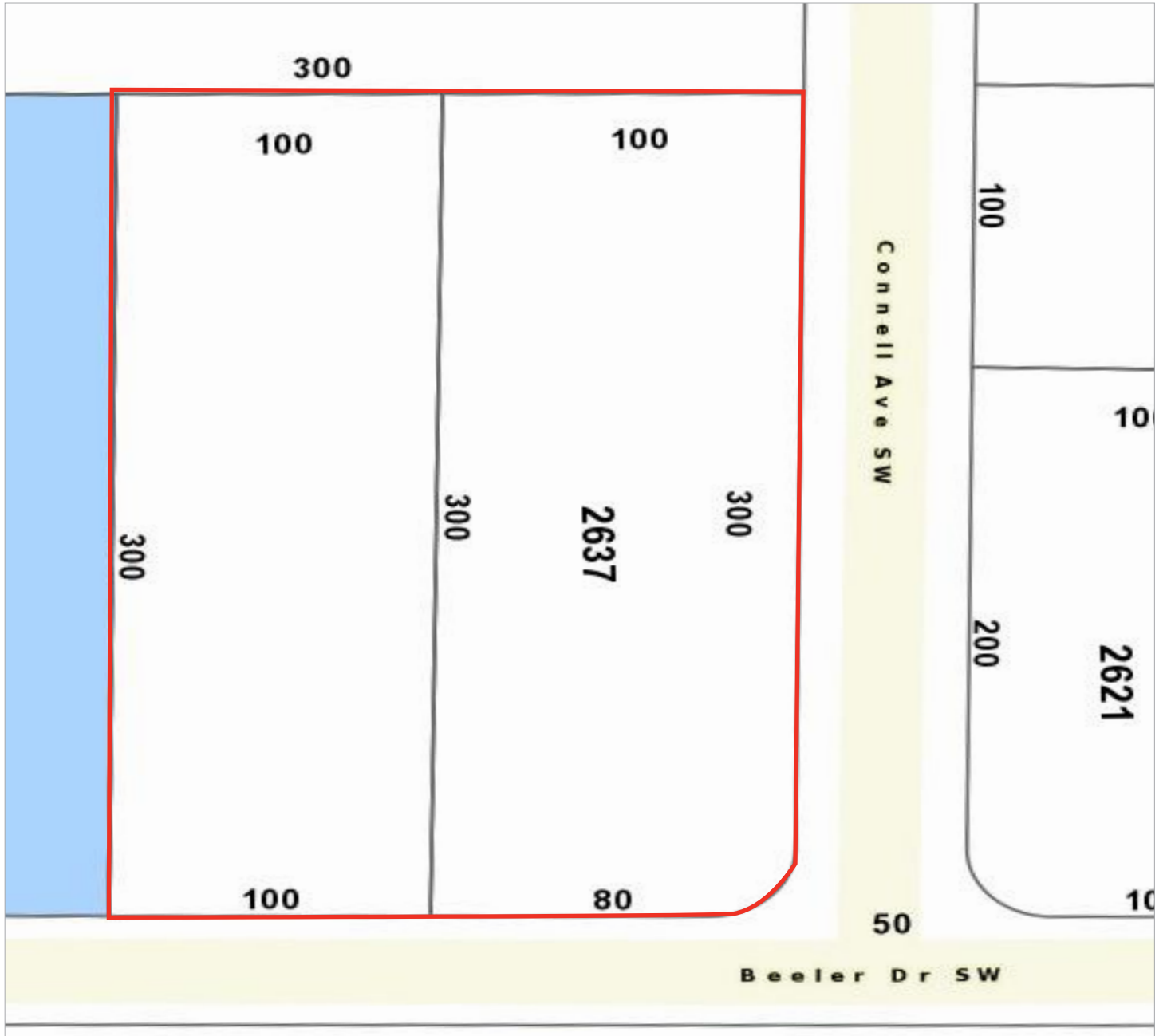
©2016 Ackerman & Co. All rights reserved. While we have no reason to doubt the accuracy of the information provided from sources we deem reliable, we cannot guarantee it and therefore assume no liability for errors, omissions or changes to this content.

2637 Beeler Drive

Atlanta, Georgia 30315

Multifamily Site: 1.38 Acres

PARCEL MAP



BOB GOTTLIEB
770.913.3917
bgottlieb@ackermanco.net

Ackerman & Co.

www.ackermanco.com

©2016 Ackerman & Co. All rights reserved. While we have no reason to doubt the accuracy of the information provided from sources we deem reliable, we cannot guarantee it and therefore assume no liability for errors, omissions or changes to this content.