



For Lease

Southpark Square

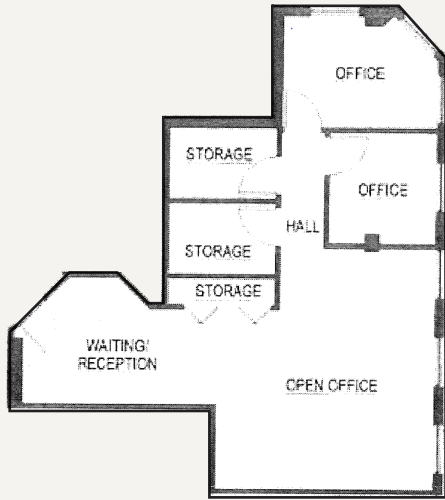
CBD Office Space

1503-1525 SW Park Ave | Portland, OR

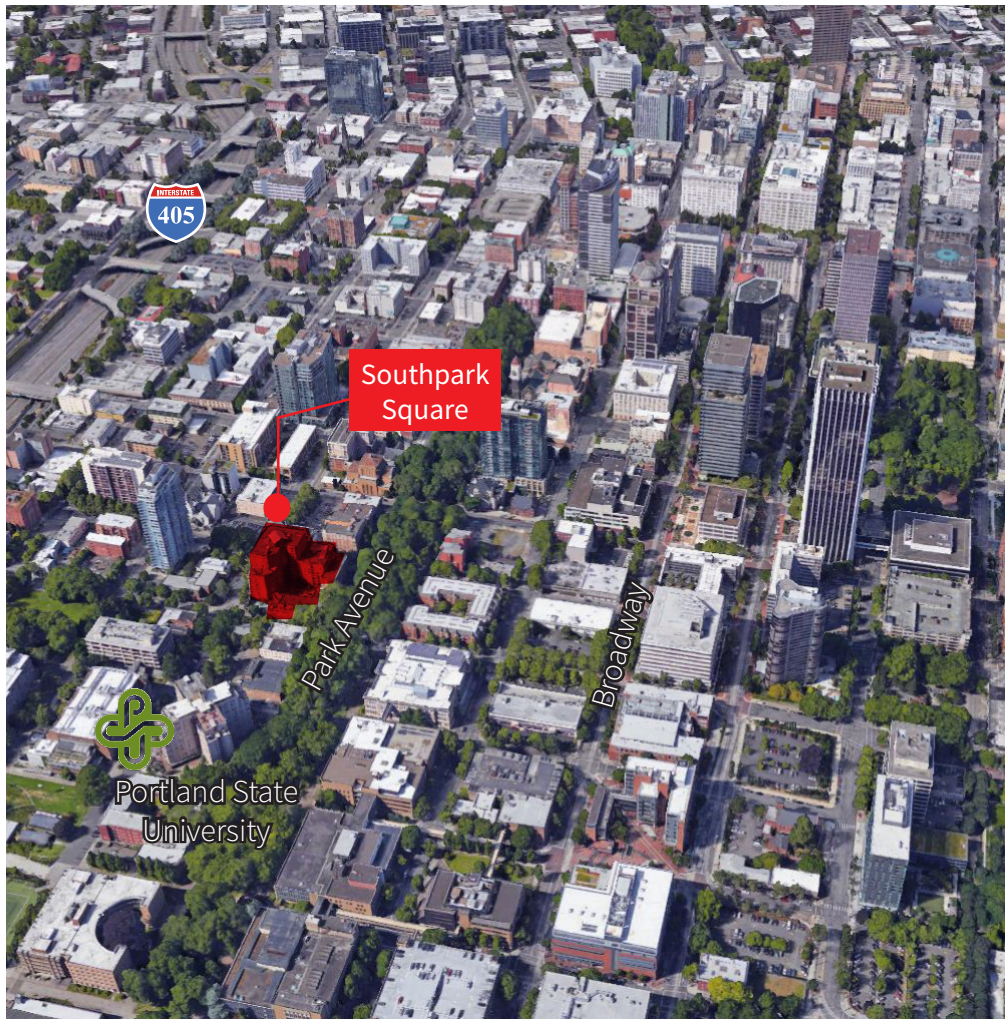
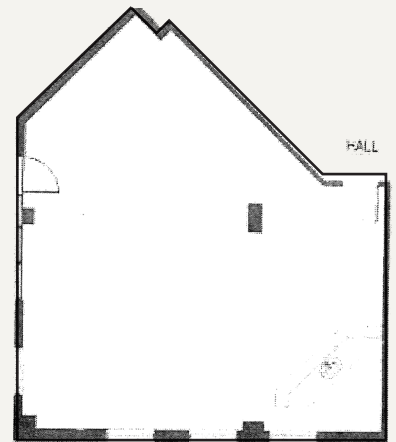
Building Features:

- Suite 101 : 848 RSF - available May 1, 2018
- Suite 104: 845 RSF - available September 1, 2018
- Access to: fitness center, yoga room, and tenant lounge
- 1 year free parking for qualified leases
- \$24.00/RSF MG

Suite 101: 848 RSF



Suite 104: 845 RSF



Nearby Amenities

- Nel Centro
- Morton's Steakhouse
- Raven & Rose
- Higgins
- PSU Campus
- 24 Hour Fitness
- Portland Art Museum
- Portland Farmer's Market
- Tom McCall Waterfront Park
- McMenamins Street Pub
- Park Avenue Cafe
- Sesame Donuts
- Park Avenue Market
- Starbucks
- The Energy Bar

For leasing information:

Mike Malone
 Licensed in OR
 +1 503 972 8609
 mike.malone@am.jll.com

