

25413 FIVE MILE ROAD  
REDFORD, MICHIGAN

RETAIL FOR SALE  
2,000 Square Feet Available



**SIGNATURE  
ASSOCIATES**  
KNOW SIGNATURE | KNOW RESULTS

**FORMER RESTAURANT**



## PROPERTY FEATURES

- 2,000 available square feet
- 18 parking spaces
- Sale Price: \$195,000 (\$97.50/sq.ft.)

**Comments:** Fully furnished and loaded with restaurant equipment, this well-located former restaurant is perfect for any food or catering related business.



For more information, please contact:

**BRUCE D. BAJA**  
(248) 799 3177  
bbaja@signatureassociates.com

**JUSTIN GAFFREY**  
(248) 799 3143  
jgaffrey@signatureassociates.com

**SIGNATURE ASSOCIATES**  
One Towne Square, Suite 1200  
Southfield, MI 48076  
www.signatureassociates.com

# 25413 Five Mile Road – Redford, Michigan

Retail For Sale

2,000  
Square Feet  
AVAILABLE

## Interior Photos



For more information, please contact:

**BRUCE D. BAJA**  
(248) 799 3177  
bbaja@signatureassociates.com

**JUSTIN GAFFREY**  
(248) 799 3143  
jgaffrey@signatureassociates.com

**SIGNATURE ASSOCIATES**  
One Towne Square, Suite 1200  
Southfield, MI 48076  
www.signatureassociates.com

# 25413 Five Mile Road – Redford, Michigan

## Retail For Sale

2,000  
Square Feet  
AVAILABLE

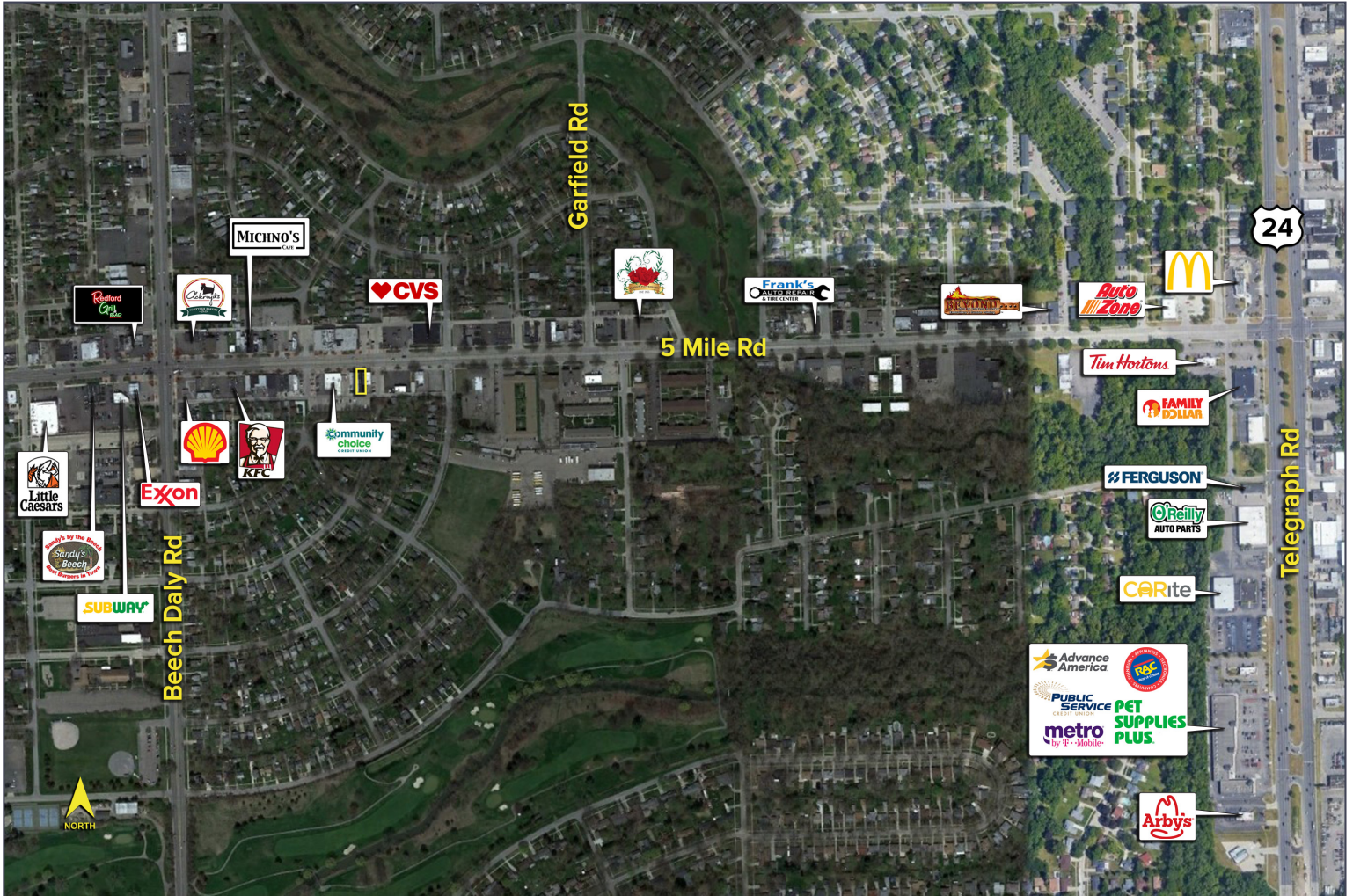


### DEMOGRAPHICS

	POPULATION	MED. HH INCOME
1 MILE	11,151	\$63,493
3 MILE	103,514	\$54,632
5 MILE	296,146	\$54,860

### TRAFFIC COUNTS (TWO-WAY)

19,395	5 Mile Rd. E. of Beech Daly Rd.
16,657	5 Mile Rd. W. of Beech Daly Rd.
22,665	Beech Daly Rd. S. of 5 Mile Rd.
29,831	Beech Daly Rd. N. of 5 Mile Rd.



For more information, please contact:

**BRUCE D. BAJA**  
(248) 799 3177  
bbaja@signatureassociates.com

**JUSTIN GAFFREY**  
(248) 799 3143  
jgaffrey@signatureassociates.com

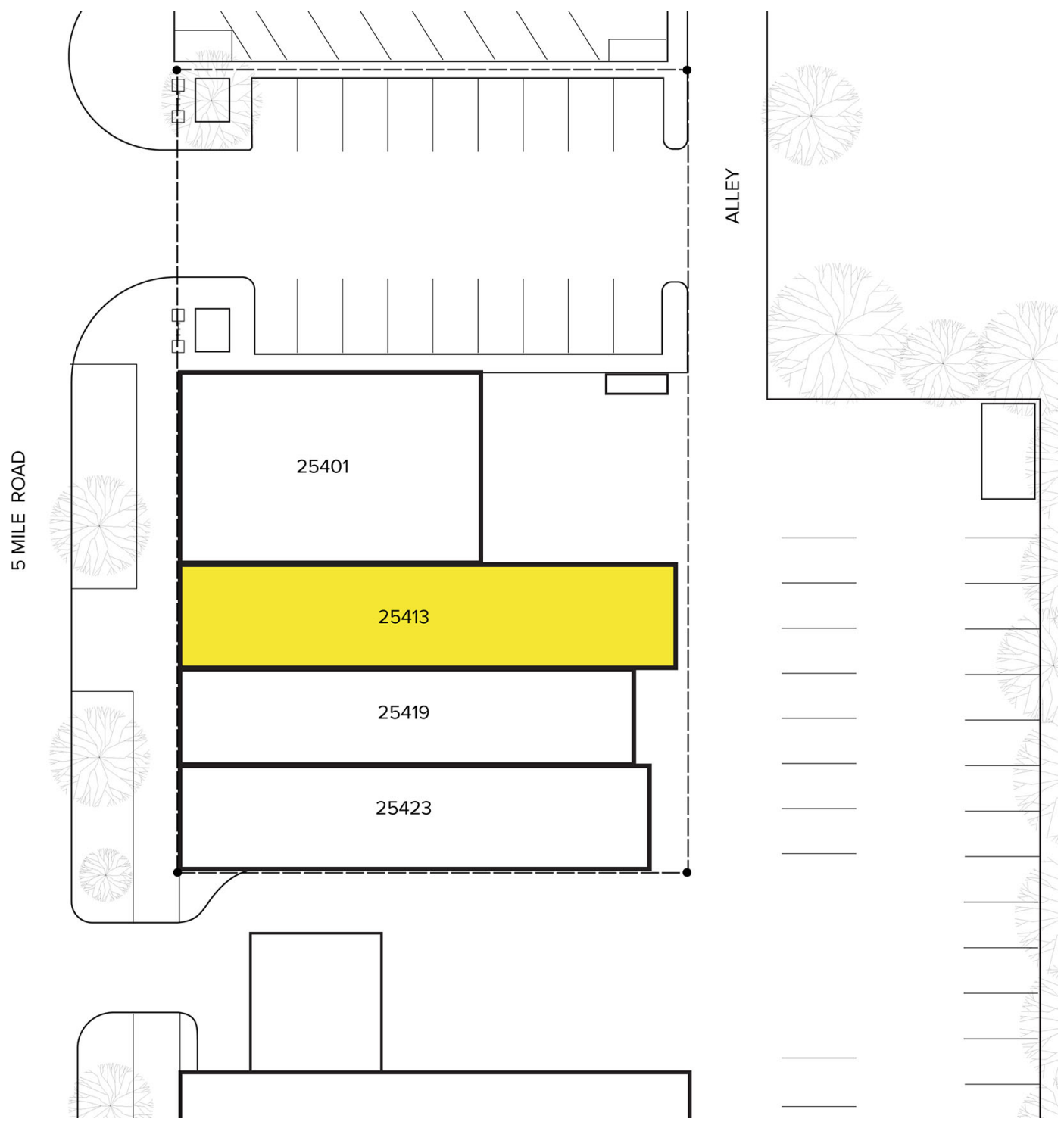
**SIGNATURE ASSOCIATES**  
One Towne Square, Suite 1200  
Southfield, MI 48076  
www.signatureassociates.com

# 25413 Five Mile Road – Redford, Michigan

Retail For Sale

2,000  
Square Feet  
AVAILABLE

## Site Plan



For more information, please contact:  
**BRUCE D. BAJA**  
(248) 799 3177  
bbaja@signatureassociates.com

**JUSTIN GAFFREY**  
(248) 799 3143  
jgaffrey@signatureassociates.com

**SIGNATURE ASSOCIATES**  
One Towne Square, Suite 1200  
Southfield, MI 48076  
www.signatureassociates.com

Information is subject to verification and no liability for errors or omissions is assumed. Price is subject to change and listing withdrawal.