

3300
WOMAN'S CLUB DRIVE
RALEIGH, NC 27612



PROPERTY HIGHLIGHTS

- 3,625 SF available
- Seven offices with large divisible open space
- Located in the lower level of the building
- Offices have floor-to-ceiling windows overlooking lush private gardens
- Built in 1970
- Building is home to the Woman's Club of Raleigh
- 10:1000 SF parking ratio
- *New paint and carpet along with window cleaning*

LOCATION HIGHLIGHTS

- Located inside the beltline (I-440), just off Glenwood Avenue
- Near Crabtree Valley Mall and numerous retailers
- Minutes from downtown Raleigh, Cameron Village, and Midtown

\$18.00/SF
FULL SERVICE

SANDRA SIMPSON ssimpson@trademarkproperties.com 919.573.8099 direct 919.244.8714 mobile

CLAIBORNE LORD clord@trademarkproperties.com 919.645.1426 direct 919.219.8635 mobile

1001 Wade Avenue, Suite 300, Raleigh, NC 27605 • trademarkproperties.com • 919.782.5552



SANDRA SIMPSON

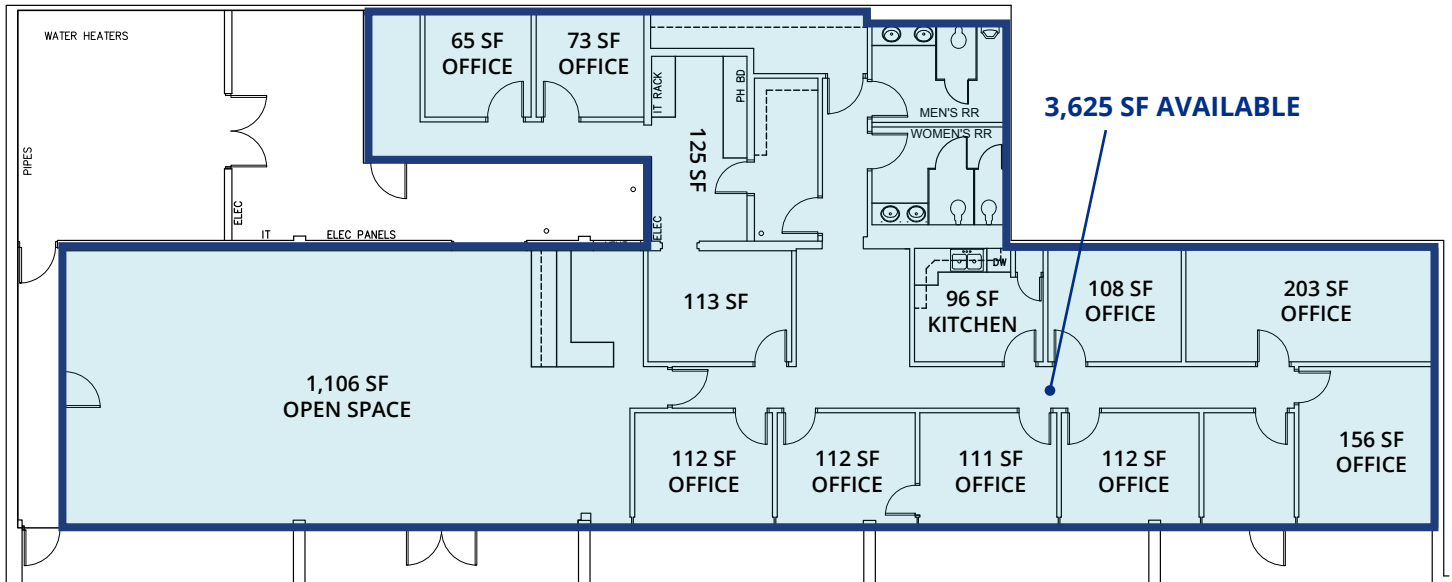
ssimpson@trademarkproperties.com

919.573.8099 direct 919.244.8474 mobile

CLAIBORNE LORD

clord@trademarkproperties.com

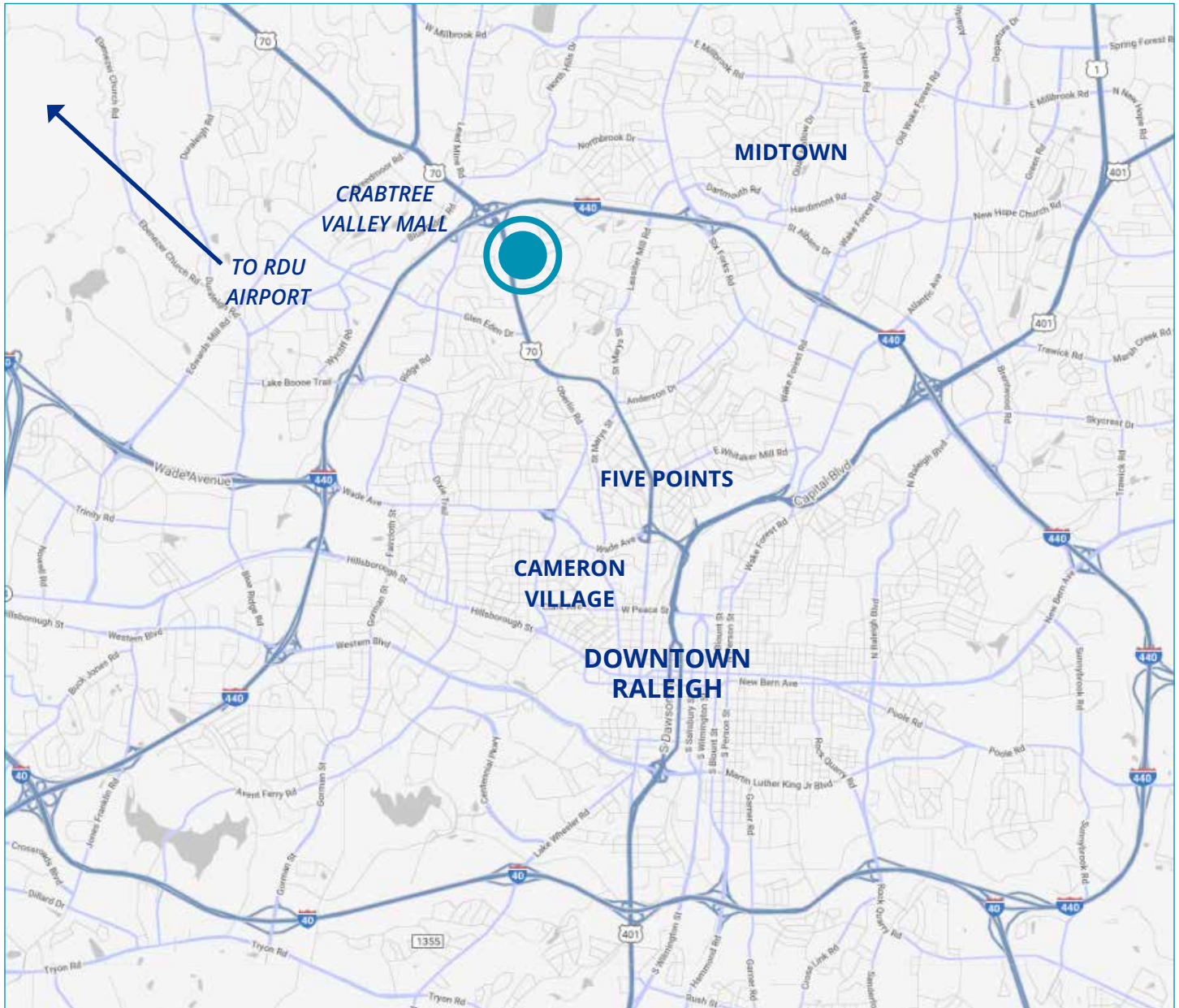
919.645.1426 direct 919.219.8635 mobile



NEW PAINT
NEW CARPET

SANDRA SIMPSON
ssimpson@trademarkproperties.com
919.573.8099 direct 919.244.8474 mobile

CLAIBORNE LORD
clord@trademarkproperties.com
919.645.1426 direct 919.219.8635 mobile



SANDRA SIMPSON
ssimpson@trademarkproperties.com
919.573.8099 direct 919.244.8474 mobile

CLAIBORNE LORD
clord@trademarkproperties.com
919.645.1426 direct 919.219.8635 mobile