

COMMERCIAL LOT - 1.064 ACRES
Solon Road
Waxahachie, Texas

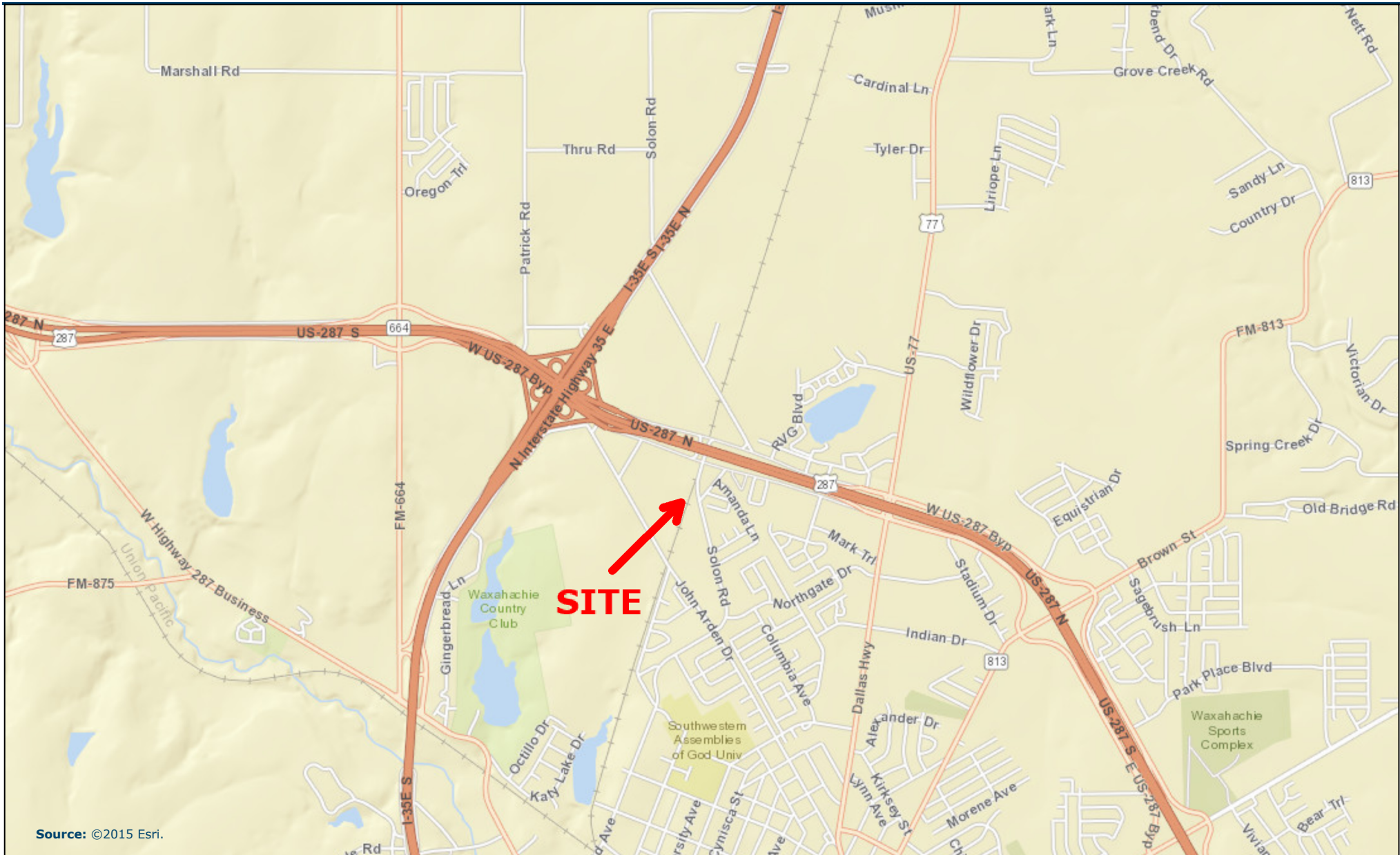
- LOCATION:** The subject property is located on the west side of Solon Road just south of U.S. Highway 287 Bypass in Waxahachie.
- SIZE:** 1.064 Acres; 46,347.84 S.F.
- ZONED:** Planned Development - 4 - Commercial
- UTILITIES:** Water - 6 inch city water line at Solon Rd.
Sewer - 10 inch city sewer line at U.S. Hwy. 287 Bypass
Electric - Oncor
- FRONTAGE:** Solon Road - 340 ft. (*approximately*)
- PRICE:** \$235,000.00
- COMMENTS:** Great location for commercial or office uses. This is the first property located south of the U.S. Highway 287 Bypass service road. The recently opened Baylor Scott & White Hospital and Medical Complex is located one-half mile to the northwest.

FOR MORE INFORMATION

Call

Joe Rust Company

972-333-4143



Source: ©2015 Esri.

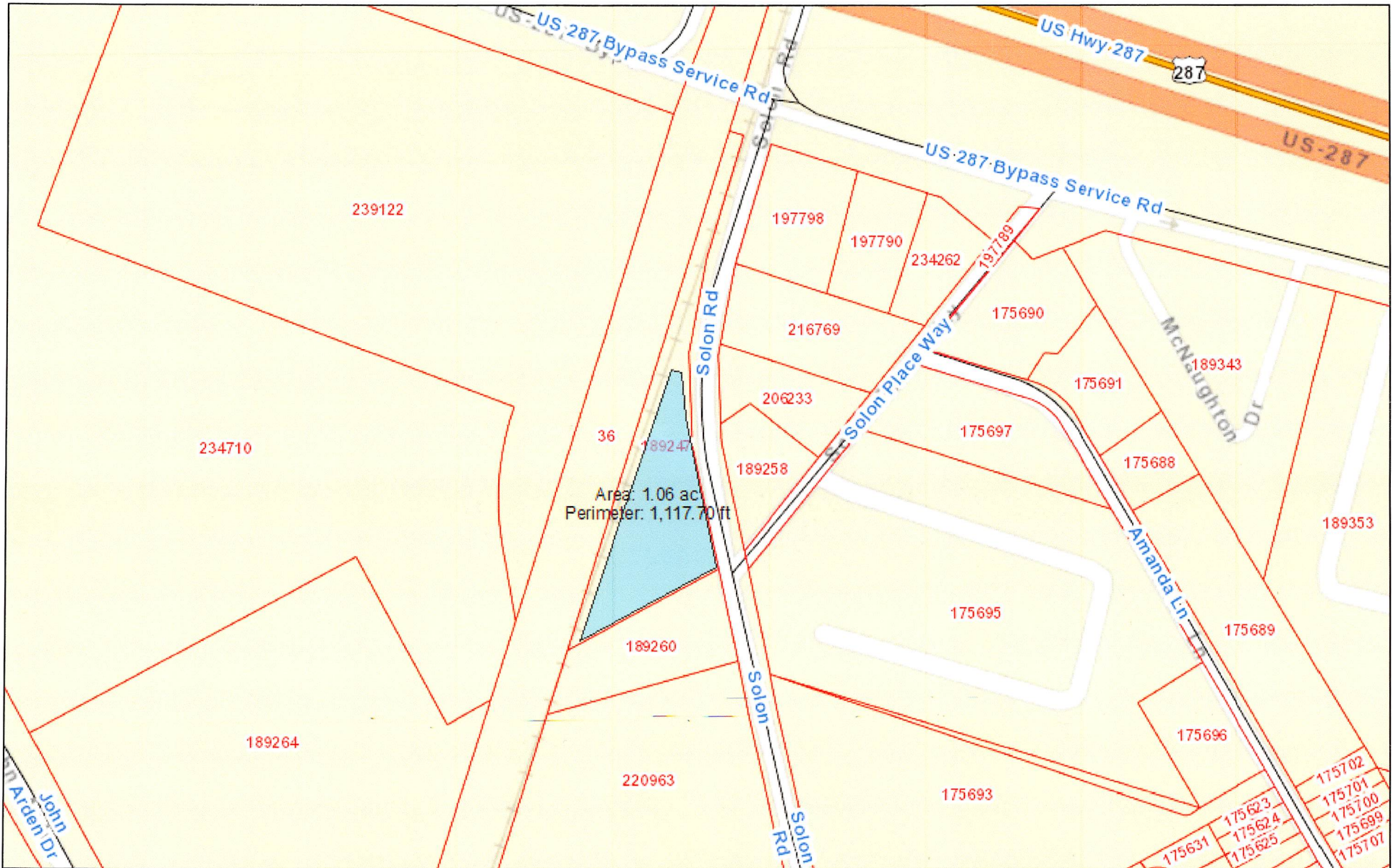
March 14, 2016



Source: ©2015 Esri.

March 14, 2016

1.06 Acres Solon Rd.

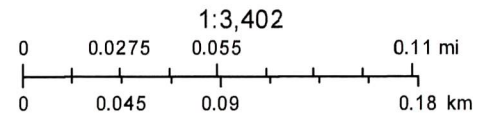


Area: 1.06 ac
Perimeter: 1,117.70 ft

March 14, 2016

Disclaimer: This product is for informational purposes only and has not been prepared for or be suitable for legal, engineering, or surveying purposes. It does not represent an on-the-ground survey and represents only the approximate relative location of boundaries

- Parcels
- Interstate
- Major Road
- Streets Names
- U.S. Highway
- <all other values>
- State Hwy



Sources: Esri, HERE, DeLorme, USGS, Intermap, increment P Corp., NRCAN, Esri Japan, METI, Esri China (Hong Kong), Esri (Thailand),

Elis Appraisal District & BIS Consulting - www.bisconsultants.com

This product and relative contents are the property of the respective governmental entity and BIS Consultants. Use is restricted for official purposes.

ZONING MAP

