

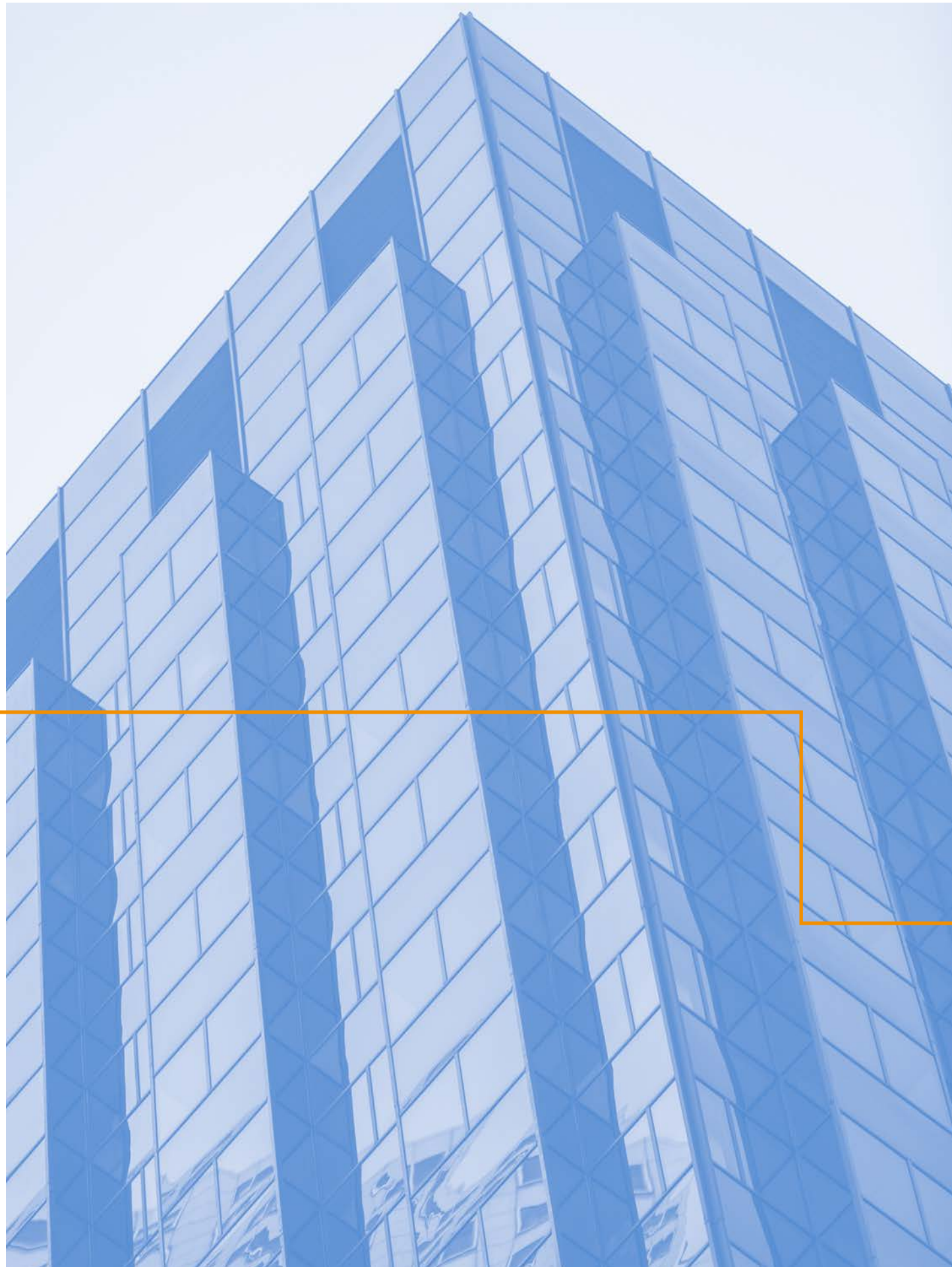
425 CALIFORNIA

Built, owned & operated by the Cahill family,
shaping San Francisco since 1911.

 **Calfox, Inc.**
real estate investment company

 **JLL**[®]

Jones Lang LaSalle Brokerage, Inc.
Real Estate License #: 01856260



ABOUT 425 CAL

Built in 1968 by Cahill Contractors, 425 California is a Class A, 185,604 SF building located on San Francisco's iconic California Street.

The building possesses a distinctive window-line design that merges both form and function, creating beautiful outlooks that provide an abundance of natural light.

Featuring a side-core floor plate design, the building lends itself to traditional and creative users.

Located just two blocks from Market Street and Montgomery BART/MUNI stations, 425 California is surrounded by world-class shopping, dining, and entertainment.

AMENITIES

FOOD AND BEVERAGE

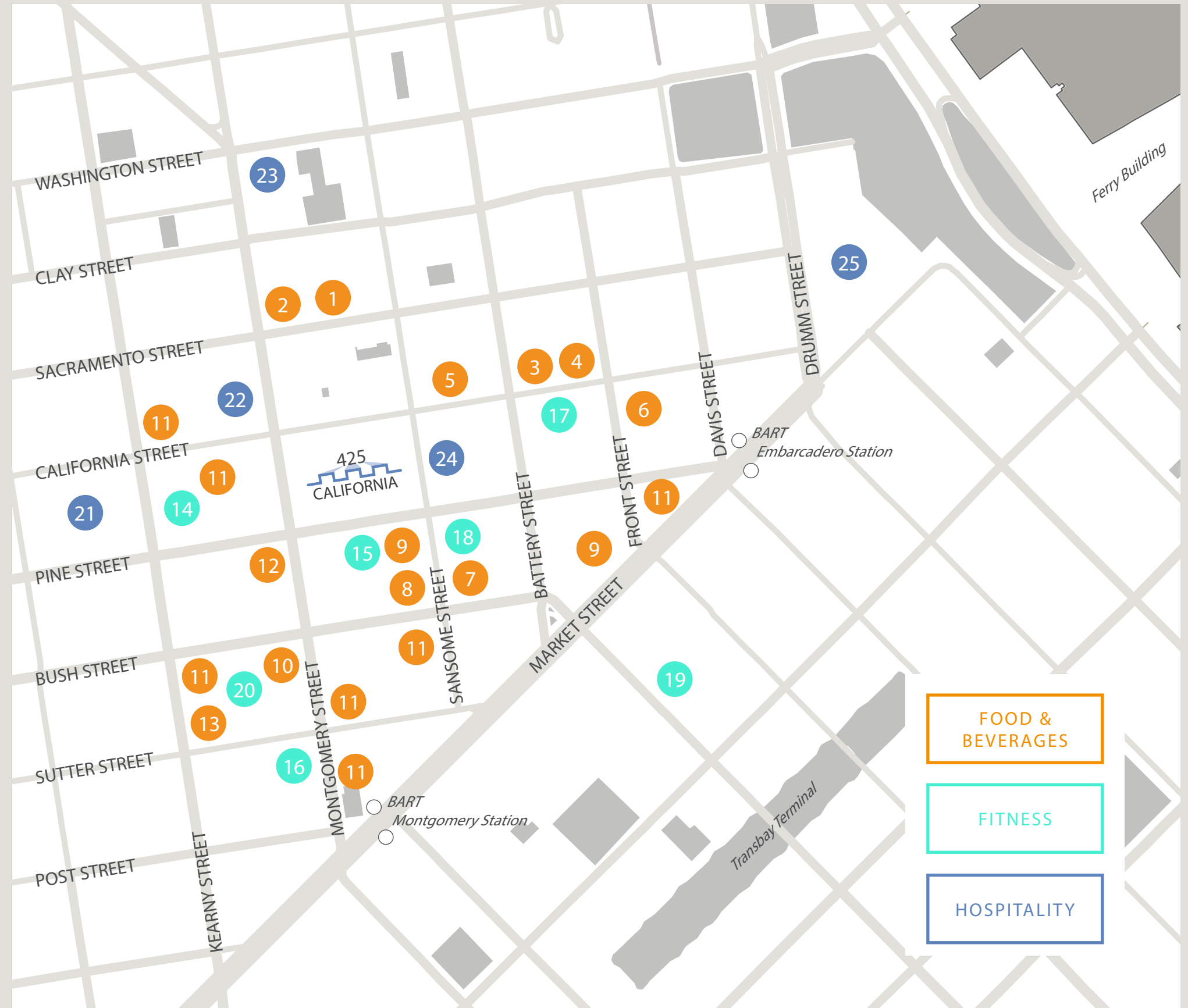
- 1 Wayfare Tavern
- 2 Leo's Oyster Bar
- 3 Tadich Grill
- 4 Perbacco/Barbacco
- 5 Cafe Madeline
- 6 Pabu
- 7 Mixt
- 8 Blue Bottle
- 9 Philz
- 10 Peet's Coffee
- 11 Starbucks
- 12 Joe & the Juice
- 13 Belden Place

FITNESS

- 14 Bay Club
- 15 Equinox
- 16 24 Hour Fitness
- 17 Core Power
- 18 Rumble
- 19 Soulcycle
- 20 Barry's Bootcamp

HOSPITALITY

- 21 The Ritz-Carlton
- 22 Omni Hotels
- 23 Hilton
- 24 Loews
- 25 Hyatt Regency



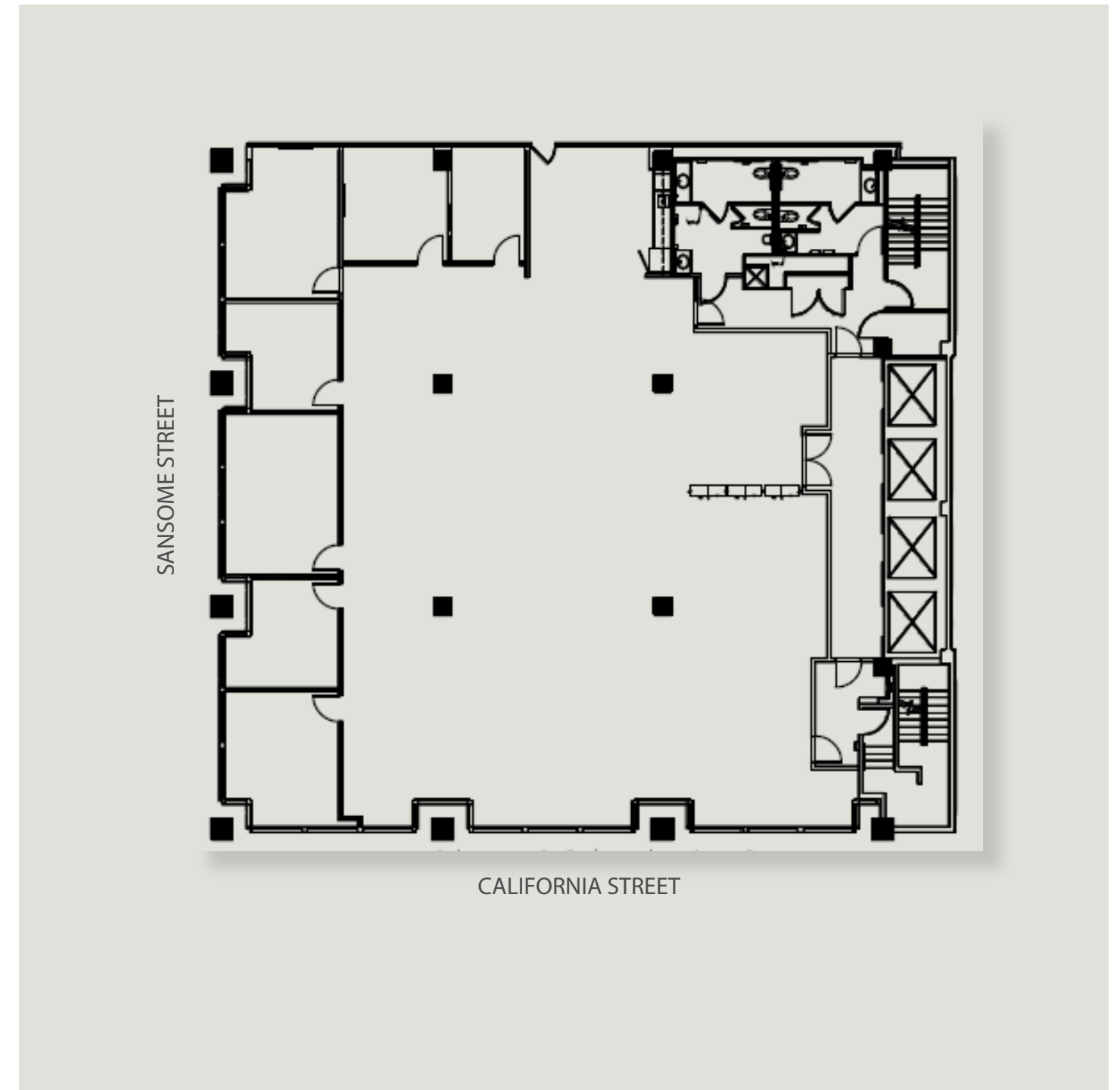
FOOD &
BEVERAGES

FITNESS

HOSPITALITY



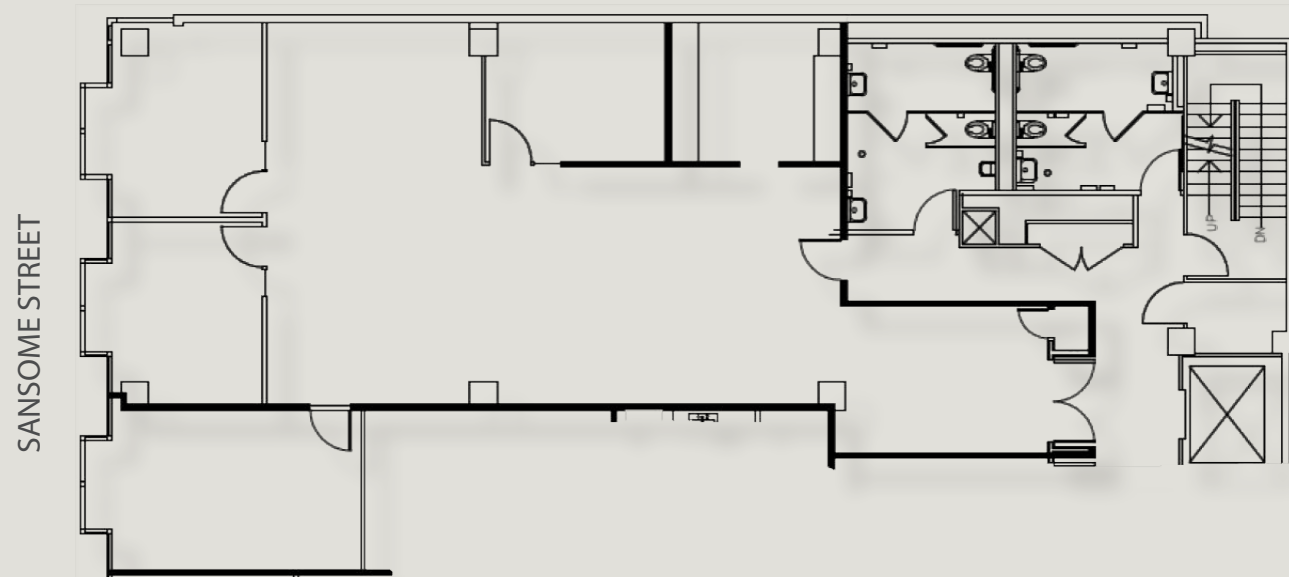
Note: Pictures not representative of current buildout



SUITE 200 – 6,527 RSF

- Available Now
- Five private offices
- Open area
- Conference room
- Break room





SANSOME STREET

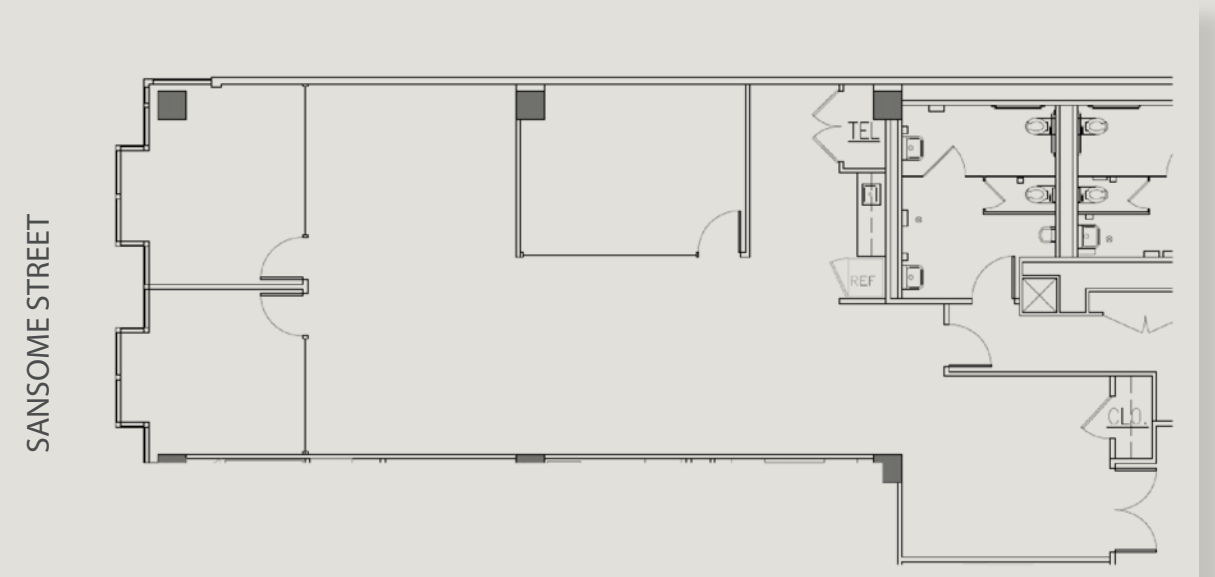
CALIFORNIA STREET



TAKE VIRTUAL TOUR

SUITE 410 – 2,488 RSF

Available Now
Three private offices
Open area
Conference room
Break room



SANSOME STREET

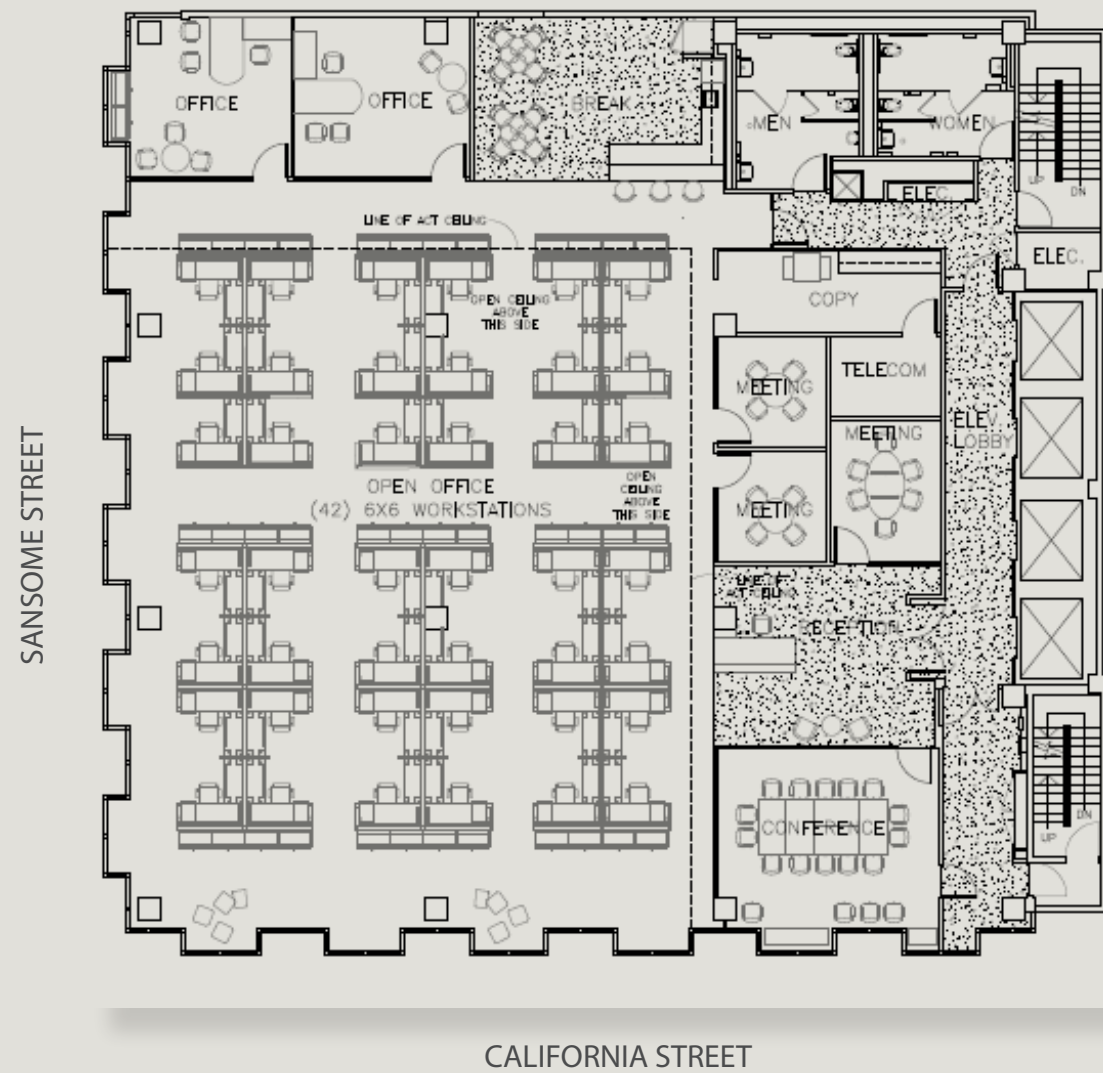
CALIFORNIA STREET



TAKE VIRTUAL TOUR

SUITE 550 – 2,147 RSF

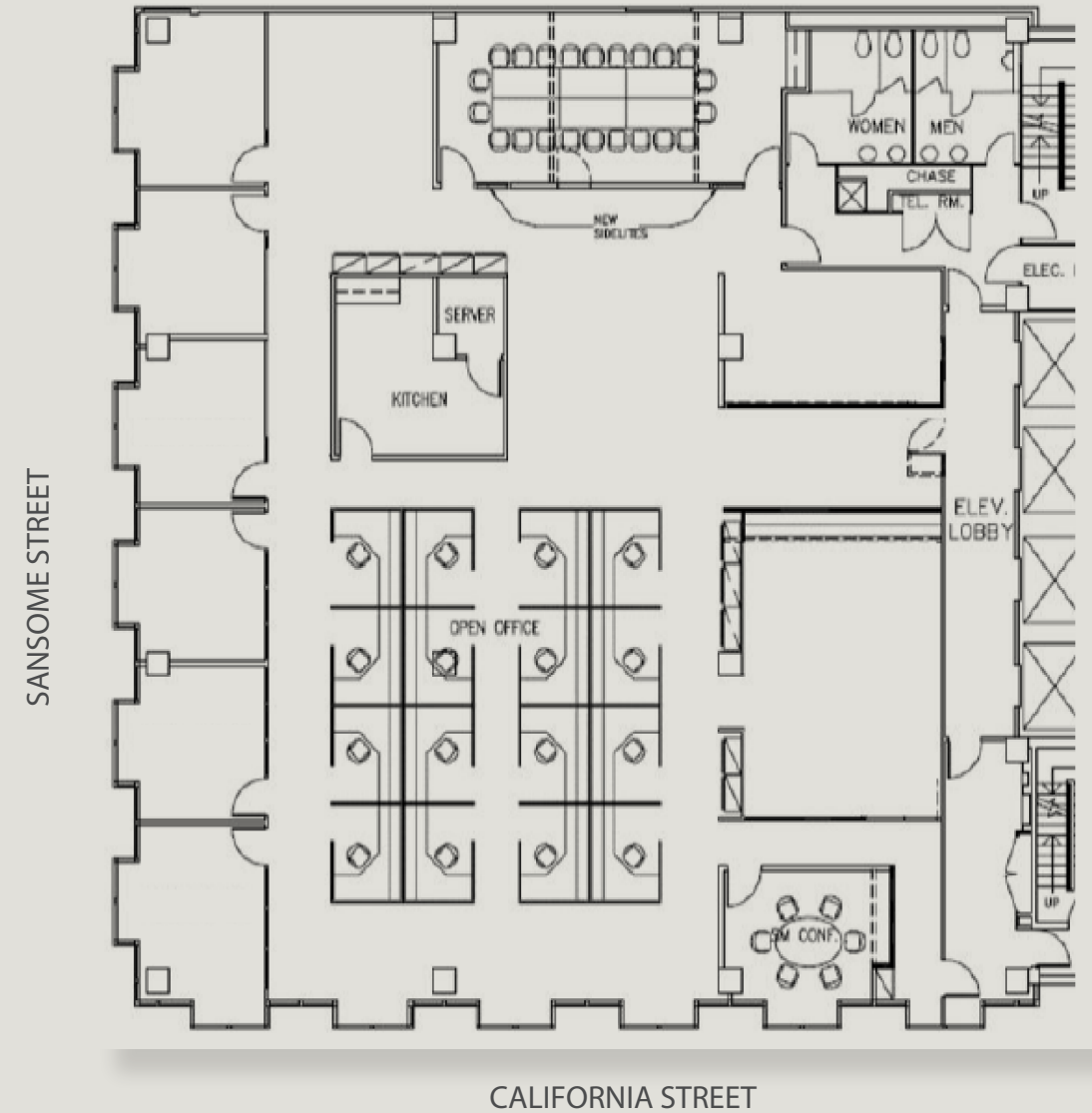
Available Now
Two private offices
Open area
Conference room
Reception
Kitchenette/Break room



[▶ TAKE VIRTUAL TOUR](#)

SUITE 600 – 7,161 RSF

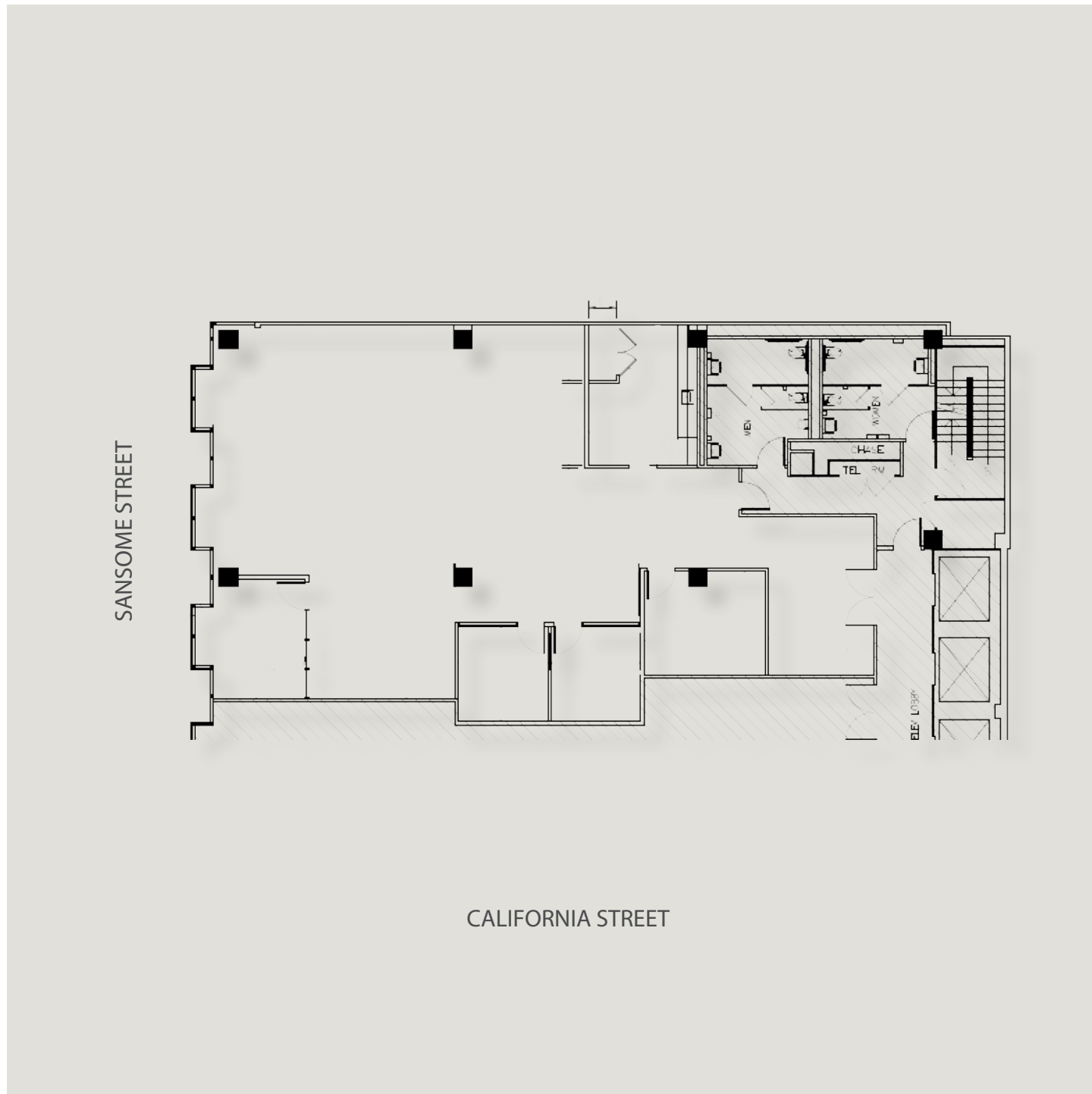
- Available 1/1/2021
- Full-floor opportunity
- Two private offices
- 42 workstations
- Three meeting rooms
- One conference room
- Kitchen/break room



[▶ TAKE VIRTUAL TOUR](#)

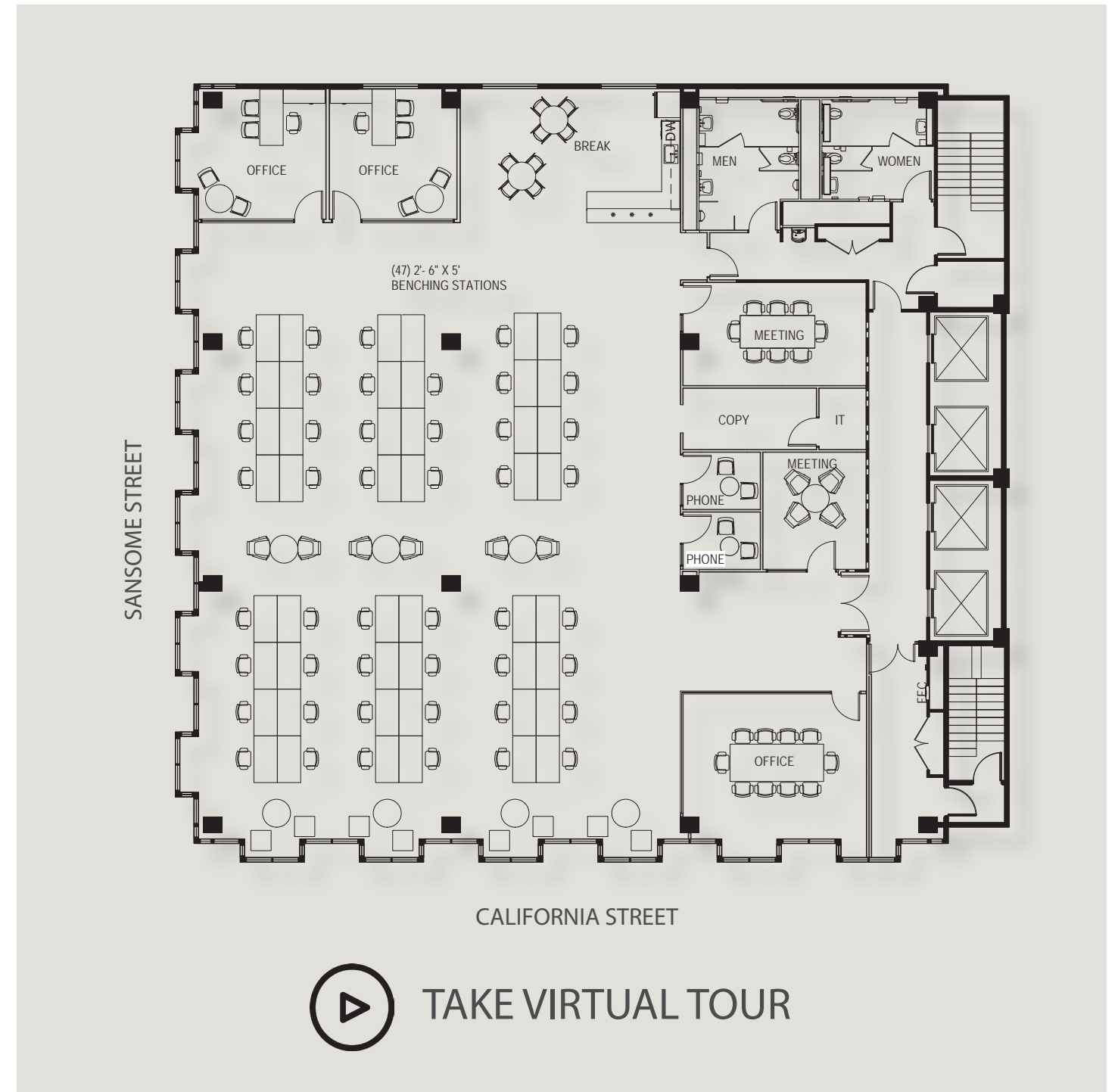
SUITE 700 – 7,161 RSF

- Available Now
- Full-floor opportunity
- Mix of private offices and open space
- One large boardroom
- Small conference room
- Kitchen



SUITE 950 – 3,342 RSF

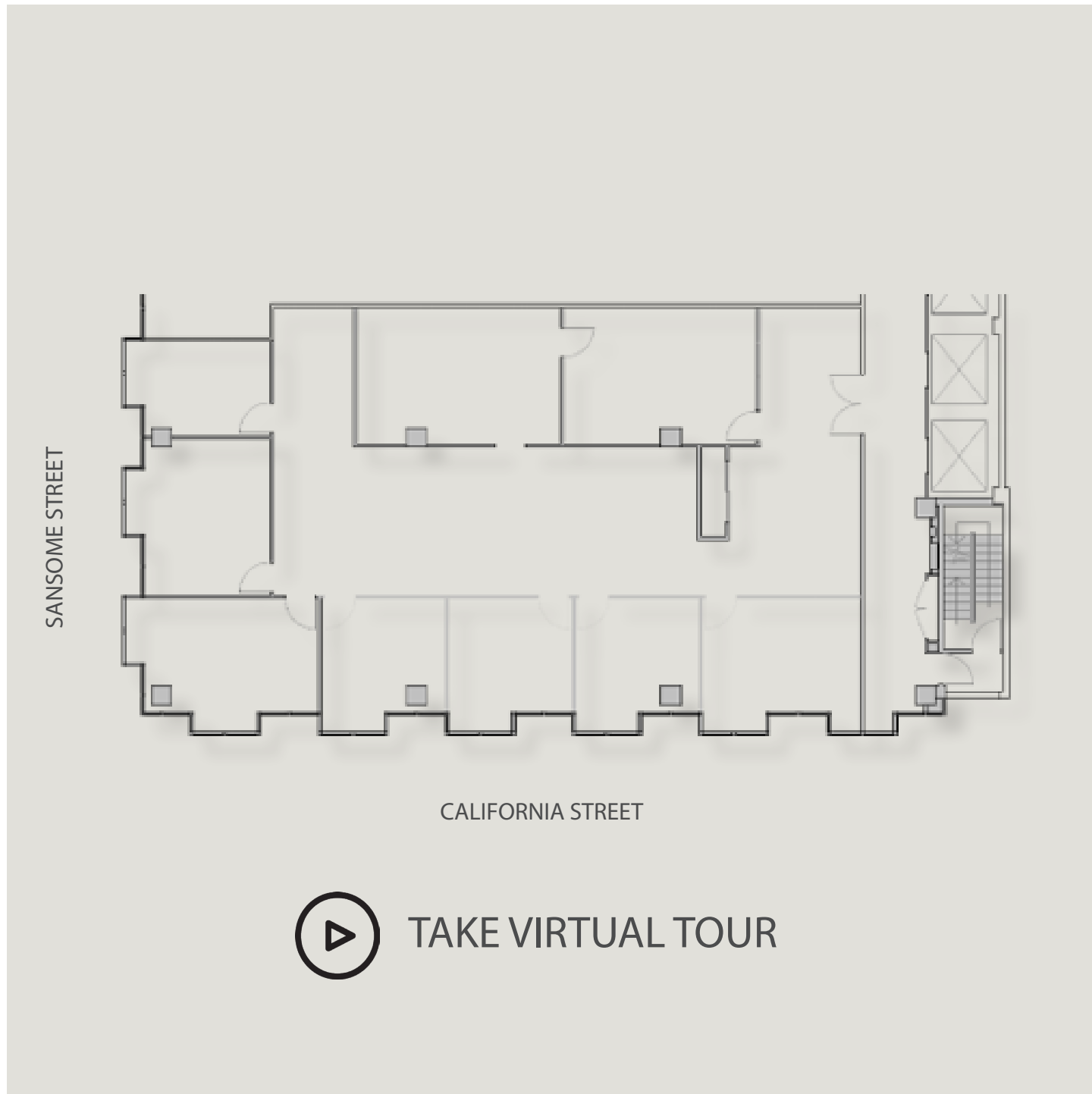
Available 3/1/2021
 Mix of private offices and open space
 One conference room
 Copy/break area
 Reception



 TAKE VIRTUAL TOUR

SUITE 1400 – 7,161 RSF

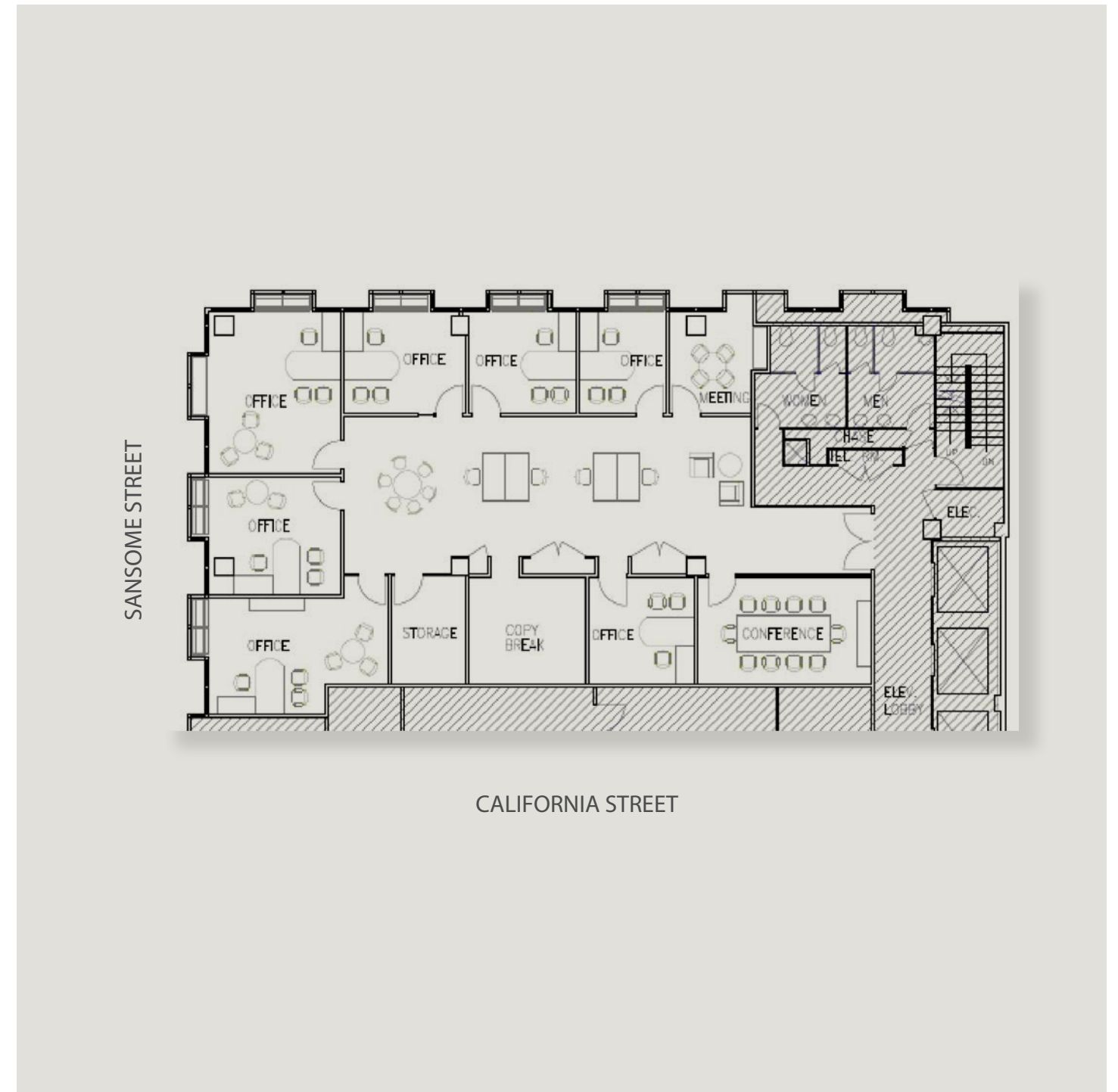
Available Now
 Full-floor opportunity
 Two large boardrooms
 One medium sized conference room
 Two private offices
 Two phone rooms
 Kitchen



 TAKE VIRTUAL TOUR

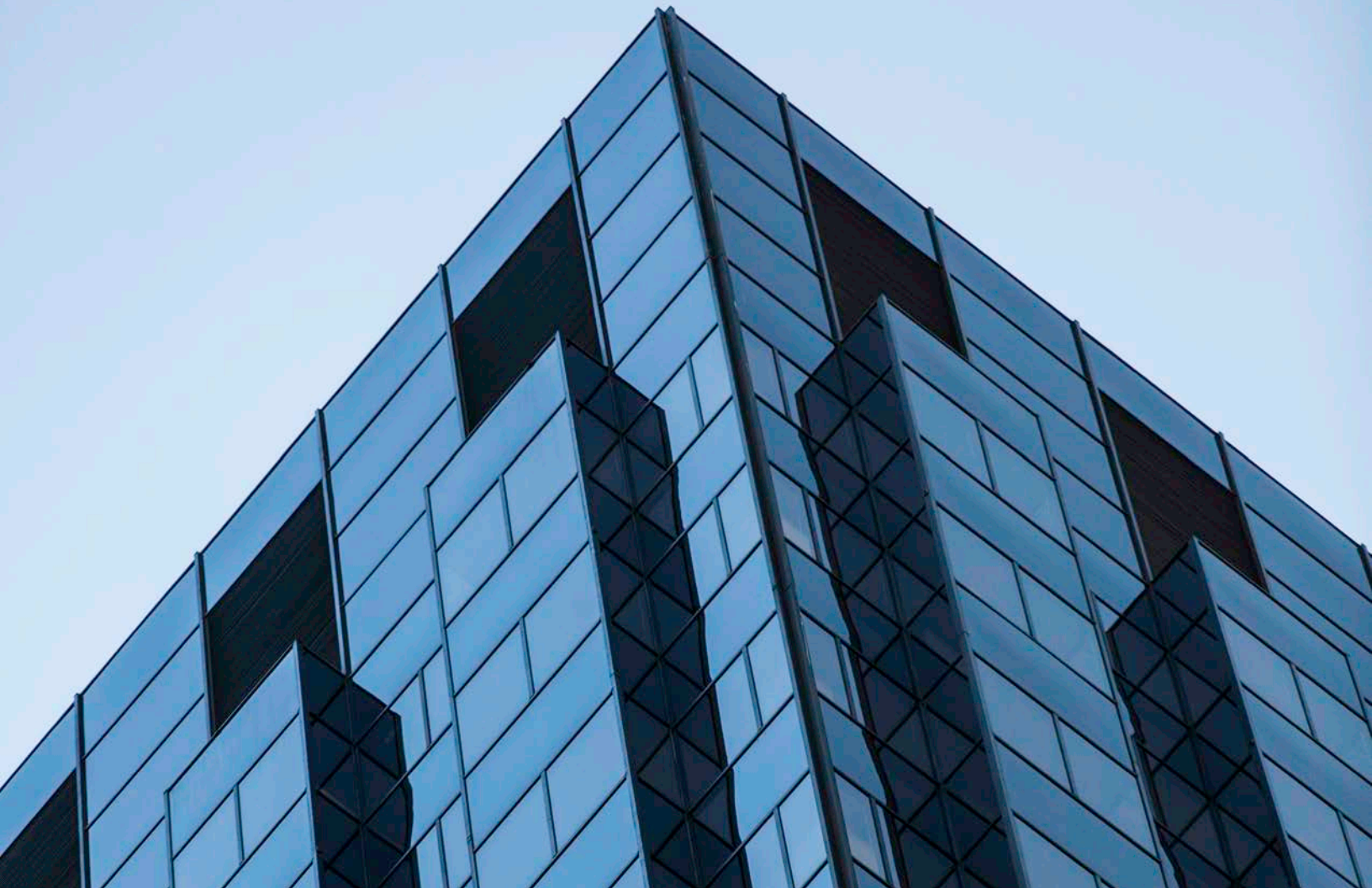
SUITE 2000 – 3,492 RSF

- Available Now
- Mix of private offices and open space
- Kitchen
- Reception



SUITE 2025 – 3,784 RSF

- Available Now
- 7 private offices
- Conference room
- Meeting room
- Copy/Break room
- Storage room



425

CALIFORNIA

Built, owned & operated by the Cahill family,
shaping San Francisco since 1911.

For leasing inquiries:

Matt Shewey
+ 1 415 395 7255
Matt.Shewey@am.jll.com
RE License #01445125

Tom Doupe
+1 415 395 4933
Tom.Doupe@am.jll.com
RE License #01921218

