

NOW  
AVAILABLE

# FOR SALE OR LEASE

## 43 CORTLAND STREET

HIGHLAND PARK, MICHIGAN

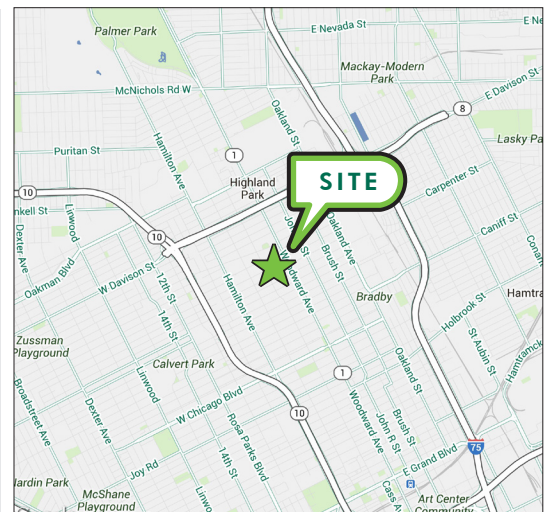


**23,485 SF**  
**INDUSTRIAL**  
**MANUFACTURING**  
**BUILDING**

ASKING PRICE: \$395,000

### PROPERTY FEATURES

- 23,485 SF Available
- Two-story building
- Five (5) ton freight elevator
- Easy access to I-75
- Located just west of Woodward Avenue
- 15' clear height



**FOR MORE  
INFORMATION  
PLEASE  
CONTACT**

**Joseph Hauska**  
Vice President  
+1 248 936 6813  
joseph.hauska@cbre.com

CBRE | 2000 Town Center | Suite 500 | Southfield, MI 48075 | [www.cbre.com/detroit](http://www.cbre.com/detroit)

© 2013 CBRE, Inc. This information has been obtained from sources believed reliable. We have not verified it and make no guarantee, warranty or representation about it. Any projections, opinions, assumptions or estimates used are for example only and do not represent the current or future performance of the property. You and your advisors should conduct a careful, independent investigation of the property to determine to your satisfaction the suitability of the property for your needs.

Photos herein are the property of their respective owners and use of these images without the express written consent of the owner is prohibited.

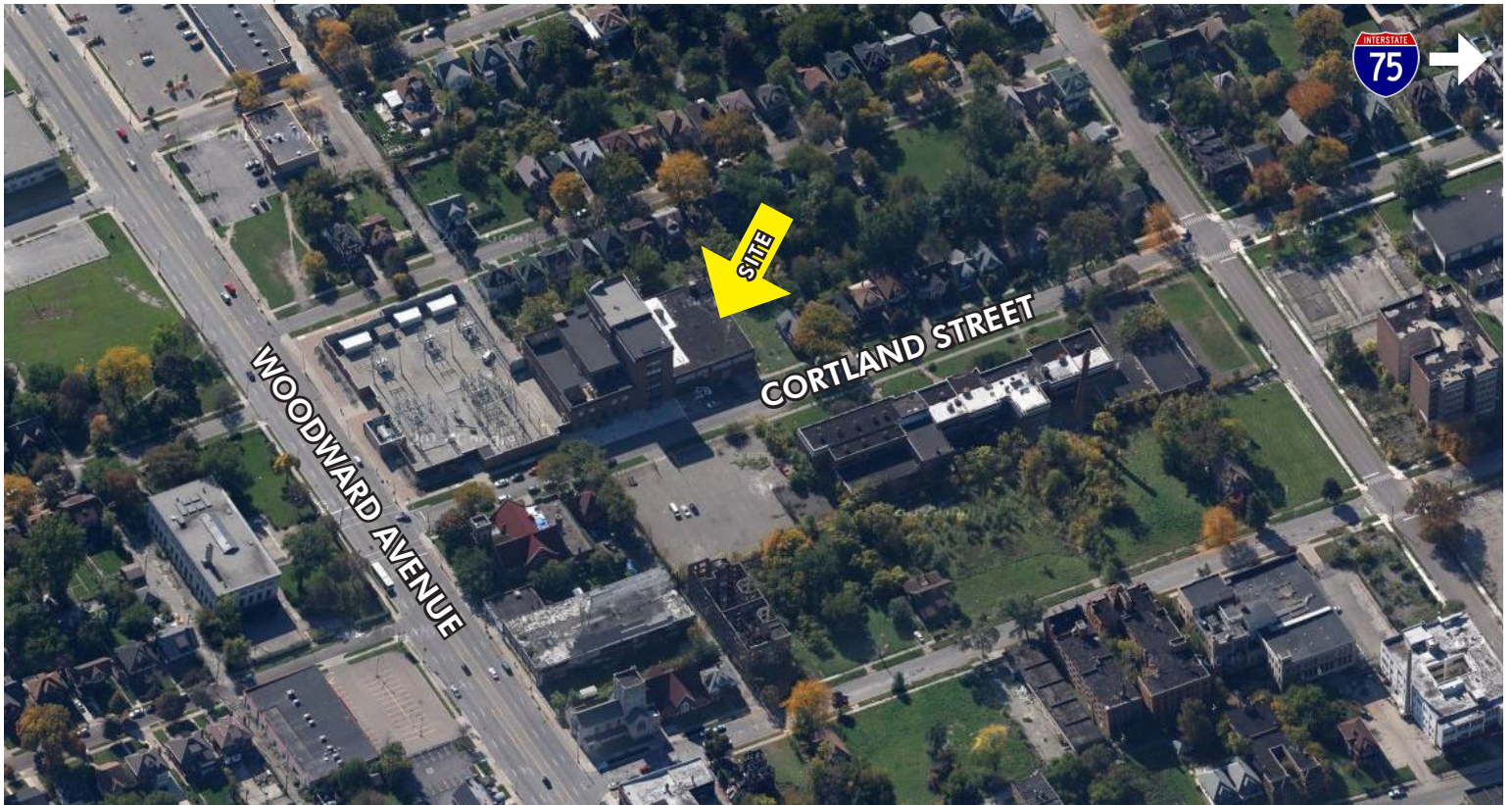
**CBRE**

NOW  
AVAILABLE

# FOR SALE OR LEASE

## 43 CORTLAND STREET

HIGHLAND PARK, MICHIGAN



**23,485 SF INDUSTRIAL MANUFACTURING BUILDING**

**FOR MORE  
INFORMATION  
PLEASE  
CONTACT**

**Joseph Hauska**

Vice President

+1 248 936 6813

joseph.hauska@cbre.com

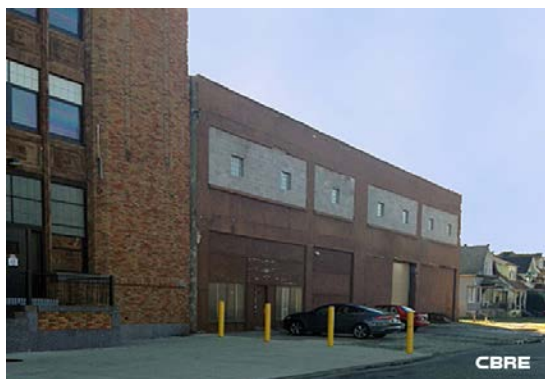
CBRE | 2000 Town Center | Suite 500 | Southfield, MI 48075 | [www.cbre.com/detroit](http://www.cbre.com/detroit)

© 2013 CBRE, Inc. This information has been obtained from sources believed reliable. We have not verified it and make no guarantee, warranty or representation about it. Any projections, opinions, assumptions or estimates used are for example only and do not represent the current or future performance of the property. You and your advisors should conduct a careful, independent investigation of the property to determine to your satisfaction the suitability of the property for your needs.

Photos herein are the property of their respective owners and use of these images without the express written consent of the owner is prohibited.

**CBRE**

## INDUSTRIAL MANUFACTURING BUILDING FOR SALE OR LEASE



43 Cortland Street

Address

Highland Park

City

Wayne

County

C-4

Zoning

23,485 SF

Total Building Size

23,485 SF

Divisible: Min/Max

\$395,000/\$3.95 NNN

Sale Price / Lease Rate

\$

Taxes (2012)

**Year Built:** 1916  
**Total Available:** 23,485 SF  
**Available Office:** 500 SF  
**Available Shop:** 22,985 SF  
**2<sup>nd</sup> Story Office:** No  
**Divisible:** No  
**Construction:** Block  
**Floors:** 6"  
**Floor Drains:** None  
**Ceiling Height:** 15'

**Parking:** 9  
**HVAC:** Gas  
**Power:** 800 Amps  
**Security System:** Yes  
**Lighting:** Fluorescent  
**Restrooms:** 2  
**Grade Level Doors:** One  
**Truckwells / Docks:** No  
**Rail:** No  
**Cranes:** No  
**Sprinklers:** No  
**Elevator:** Yes

### COMMENTS:

- Two-story building
- 5-ton freight elevator
- Easy access to I-75
- Located just west of Woodward Avenue

### CONTACT INFORMATION:

**JOE HAUSKA**

+1 248 936 6813

joseph.hauska@cbre.com

CBRE, INC. • LICENSED REAL ESTATE BROKER

We obtained the information above from sources we believe to be reliable. However, we have not verified its accuracy and make no guarantee, warranty or representation about it. It is submitted subject to the possibility of errors, omissions, change of price, rental or other conditions, prior sale, lease or financing, or withdrawal without notice. We include projections, opinions, assumptions or estimates for example only, and they may not represent current or future performance of the property. You and your tax and legal advisors should conduct your own investigation of the property and transaction.