

# 410 E WILLIAMS ST.

APEX, NC

MEDICAL/OFFICE BUILDING  
FOR LEASE OR SALE



**york**

**JUDSON MCMILLAN**

COMMERCIAL SALES & LEASING

**919.645.2764**

JUDSONMCMILLAN@YORKPROPERTIES.COM

## LEASE RATE

\$2,990 net utilities

## SALES PRICE

\$695,000

## BUILDING SIZE

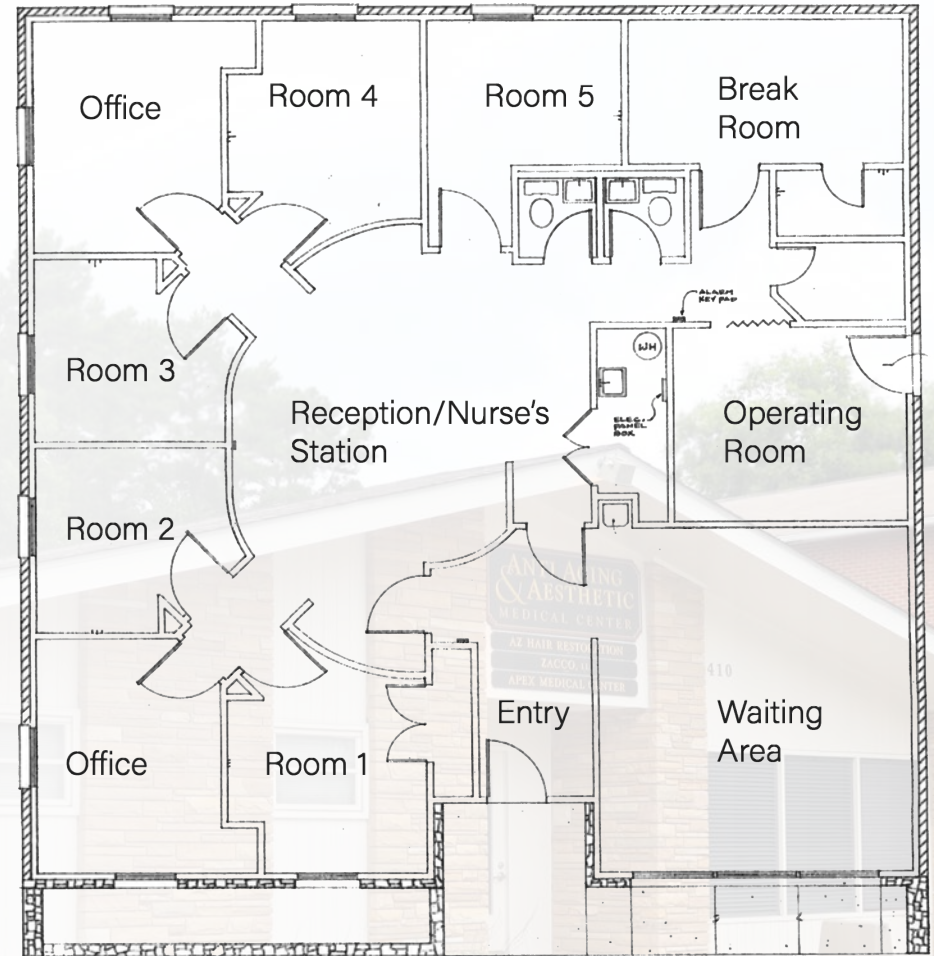
+/- 1,900 SF medical office building on +/- 0.26 acres

## ADDITIONAL DETAILS

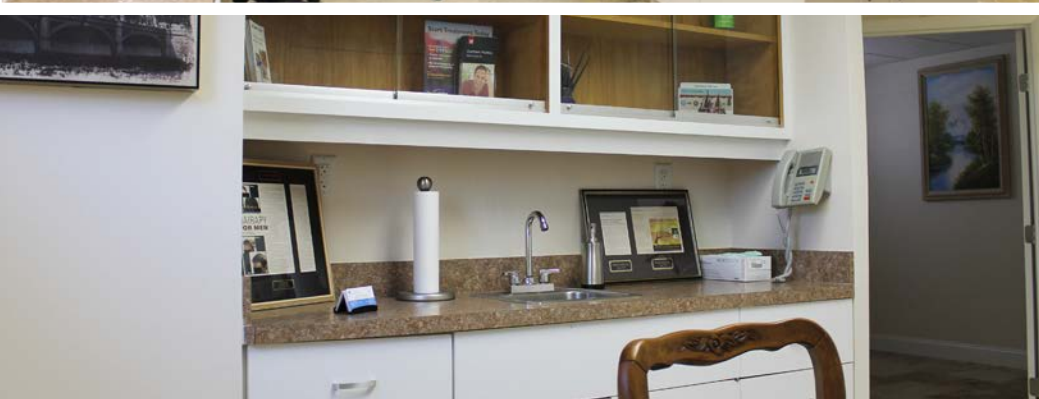
- Newly renovated with travertine stone floors throughout
- Floors have been sealed for medical use
- Layout includes reception area, four (4) exam rooms with sinks and cabinets, one (1) operating room, one (1) lab room, medicine closet, two (2) restrooms with pass-through to lab room, two (2) private offices and one (1) break room
- Check-in and check-out area at reception desk
- Medical office furniture available
- Excellent visibility from Williams St

## LOCATION

Desirable location in the heart of Apex conveniently located along NC 55/Williams St. across from Apex Middle School, just minutes to Apex Healthplex



## BUILDING FLOOR PLAN +/- 1,900 SF



# DEMOGRAPHICS

	1 Mile	3 Miles	5 Miles
Population	10,817	62,005	160,828
Households	4,246	22,712	59,508
Avg. Household Income	\$87,069	\$111,620	\$127,907
Daytime Population	8,001	36,962	91,086

# TRAFFIC COUNTS

E Williams Street 31,995 CPD



# APEX ACCOLADES



# ABOUT THE AREA

"Apex, North Carolina is located in Wake County which is situated within the Research Triangle area. Apex is less than 30 minutes from three Tier 1 Research Universities: University of North Carolina at Chapel Hill, North Carolina State University and Duke University. It is 15 miles from RDU International Airport which is home to nine commercial air carriers and their regional partners. Combined, they fly customers to more than 40 destinations on 400 flights daily. Lastly, Apex is located less than 20 minutes from the prestigious Research Triangle Park placing innovation and creativity at the fingertips of any business that chooses to locate in Apex."

- apexnc.org





APEX HEALTHPLEX

HADDON PLACE

SALEM WOODS

BOJANGLES

TACO BELL

SOUTHERN PEAK  
BREWERY

THE VILLAGES  
OF APEX

US-64

COSTCO WHOLESALE

APPLECROSS  
TOWNHOMES

SALEM OAKS

VILLAGES OF  
APEX SOUTH

APEX HIGH SCHOOL

- SCHLOTZSKY'S
- MCDONALDS
- LA COCINA MEXICAN
- BREWSTER'S PUB

HWY 55

SW CARY PKWY



410 E WILLIAMS ST

- DOWNTOWN APEX**
- MR. A'S BEIGNETS
  - COMMON GROUNDS COFFEEHOUSE & DESSERTS
  - THE PROVINCIAL
  - LA RANCHERITA MEXICAN
  - ANNA'S PIZZA
  - BUTTERCREAM'S BAKESHOP
  - SALEM STREET PUB
  - APEX FARMERS MARKET

VINTAGE GROVE

WENDY'S

MACGREGOR  
TOWNS



APEX MIDDLE SCHOOL

THE GROVES  
TOWNHOMES

SEAGROVES  
FARM

- AUTO PARK**
- JEEP
  - AUDI
  - NISSAN
  - HONDA
  - CHEVROLET
  - SUBARU
  - MASERATI
  - MERCEDES-BENZ
  - ACURA
  - PORCHE
  - JAGUAR-LANDROVER
  - BUICK-GMC

HWY 55

ABBEY ROAD TAVERN

US-1

WATERFORD  
GREEN

WATERFORD  
EAST

DAIRY QUEEN

WYNDFALL

RENAISSANCE AT  
REGENCY COTTAGES