

FOR LEASE

DEERFIELD PROFESSIONAL

9313 MASON MONTGOMERY ROAD
MASON, OH 45040



www.cbre.us/cincinnati

CBRE

FOR LEASE DEERFIELD PROFESSIONAL

9313 MASON MONTGOMERY ROAD
MASON, OH 45040



PROPERTY HIGHLIGHTS

- + Class A Office Building in Deerfield Township
- + 2,093 sq. ft. Available
- + \$16.95 NNN w/\$8.39 O.E.
- + 0% Earnings Tax
- + Amenity rich environment of office & retail
- + Building signage available
- + Parking: 4:1,000
- + High visibility on Mason Montgomery Road
- + Easy access to I-71
- + Mason was Voted #17 best places to live in the United States by Time Magazine
- + Main employers in Mason include: Luxottica USA, Cintas, Proctor & Gamble, Vantiv and Macy's (Call Center)



CONTACT US

NICK GREIWE

Associate
+1 513 369 1372
nick.greive@cbre.com

FOR LEASE
DEERFIELD PROFESSIONAL

9313 MASON MONTGOMERY ROAD
MASON, OH 45040



INTERIOR SPACE

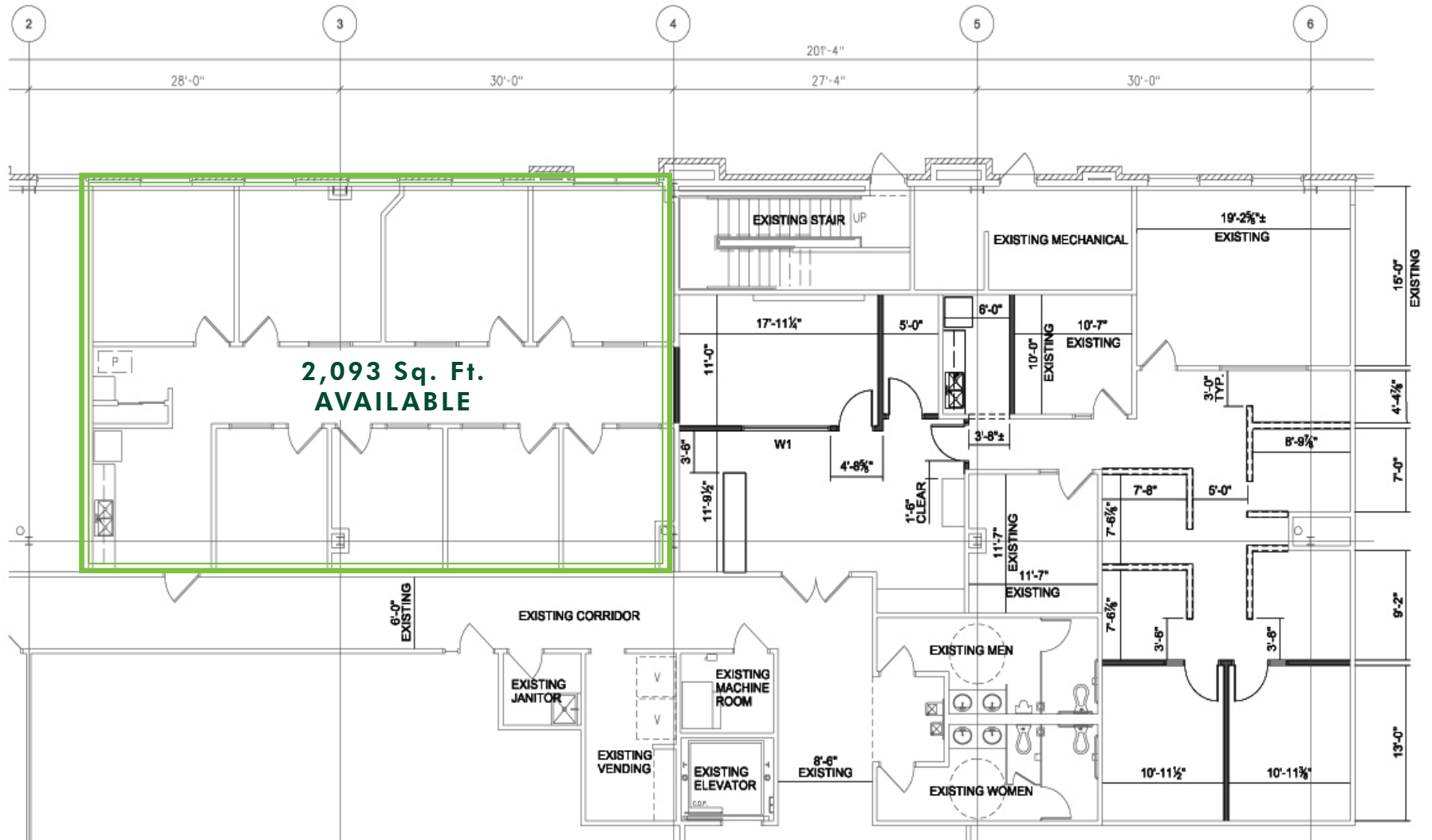


FOR LEASE DEERFIELD PROFESSIONAL

9313 MASON MONTGOMERY ROAD
MASON, OH 45040



FLOOR PLAN SUITE 150



FOR LEASE DEERFIELD PROFESSIONAL

9313 MASON MONTGOMERY ROAD
MASON, OH 45040



SITE AERIAL



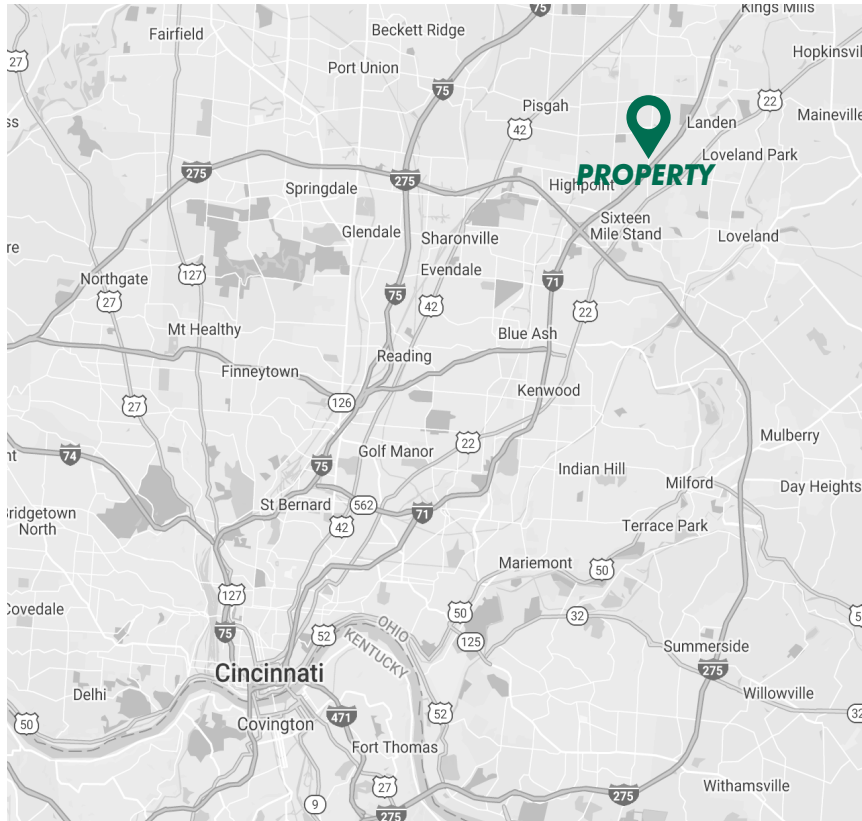
© 2017 CBRE, Inc. All rights reserved. This information has been obtained from sources believed reliable, but has not been verified for accuracy or completeness. You should conduct a careful, independent investigation of the property and verify all information. Any reliance on this information is solely at your own risk. CBRE and the CBRE logo are service marks of CBRE, Inc. All other marks displayed on this document are the property of their respective owners. Photos herein are the property of their respective owners. Use of these images without the express written consent of the owner is prohibited.

FOR LEASE DEERFIELD PROFESSIONAL

9313 MASON MONTGOMERY ROAD
MASON, OH 45040



LOCATION MAP



DEMOGRAPHICS 2017	1 MILE	3 MILE	5 MILE
ESTIMATED POPULATION	7,876	64,135	145,496
AVERAGE HOUSEHOLD INCOME	\$99,856	\$112,529	\$113,161
ESTIMATED HOUSEHOLDS	3,033	25,087	55,614
TRAFFIC COUNTS			
MASON MONTGOMERY ROAD	35,410 VPD		
I-71	82,548 VPD		



CONTACT US

NICK GREIWE

Associate
+1 513 369 1372
nick.greuwe@cbre.com