

Chula Vista Medical Arts II

450 4th Avenue, Chula Vista, CA 91910

Now Leasing



Bryan McKenney
(888) 585 - 6880 | LIC#01505792
Bryan@MedWestRealty.com

Casey P. Immel
(949) 278 - 5376 | LIC#01312850
Casey@MedWestRealty.com

Owned and Operated by:
welltower

Chula Vista Medical Arts II

450 4th Avenue, Chula Vista, CA 91910

Now Leasing

FEATURES:

- 4 story medical office building
- 36,586 SF of total building size
- Dual elevator served
- Covered tenant parking
- Strong demographics
- On Campus of Scripps Mercy Hospital Chula Vista
- Professionally managed
- Walking distance to retail amenities



Chula Vista Medical Arts II

450 4th Avenue, Chula Vista, CA 91910

Now Leasing

AERIAL VIEW:

CVMA II



SCRIPPS MERCY HOSPITAL
CHULA VISTA



Bryan McKenney
(888) 585 - 6880 | LIC#01505792
Bryan@MedWestRealty.com

Casey P. Immel
(949) 278 - 5376 | LIC#01312850
Casey@MedWestRealty.com

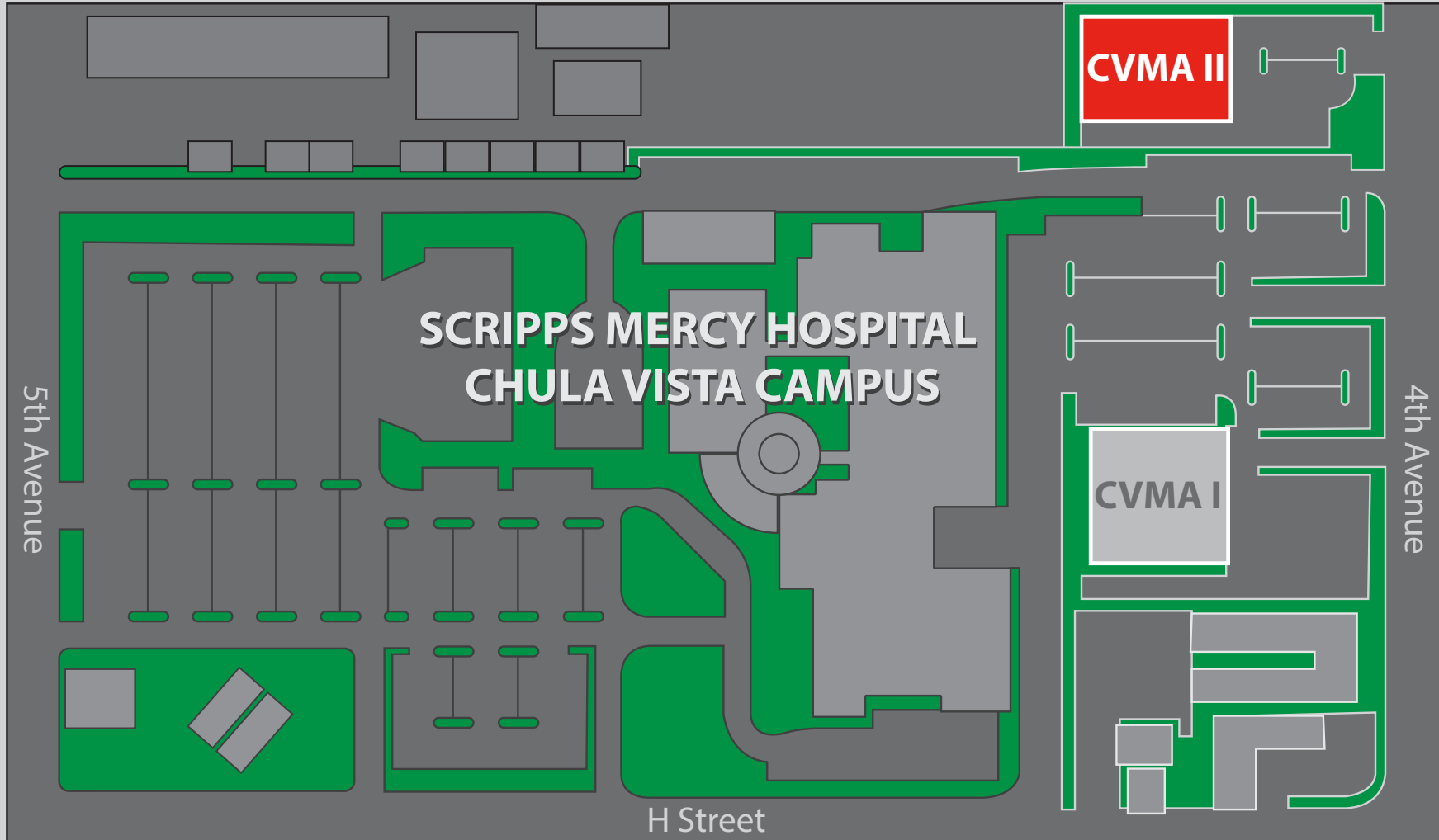
Owned and Operated by:
welltower

Chula Vista Medical Arts II

450 4th Avenue, Chula Vista, CA 91910

Now Leasing

SITE PLAN:



Chula Vista Medical Arts II

450 4th Avenue, Chula Vista, CA 91910

Now Leasing

FLOOR PLAN

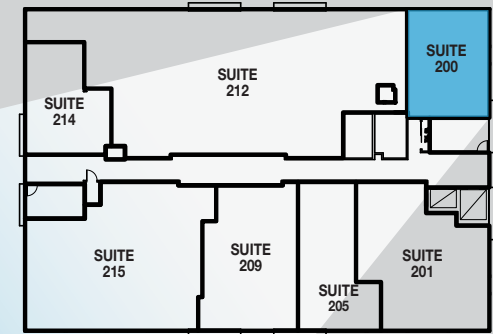
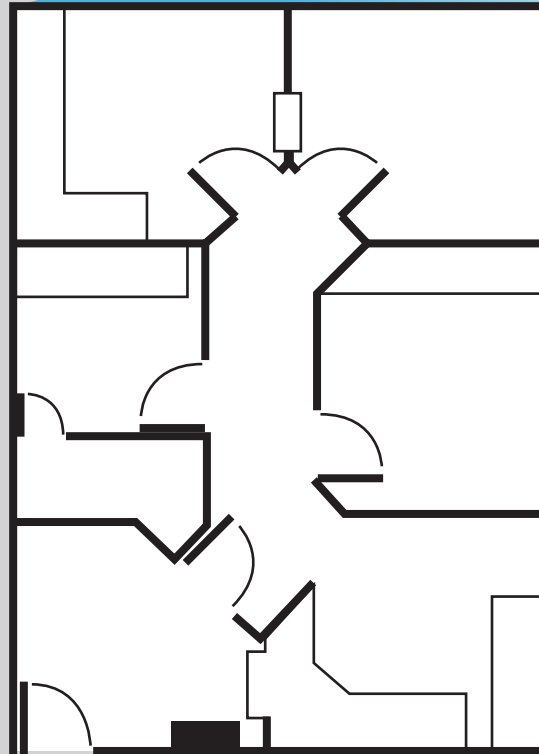
AVAILABLE SUITE:
SUITE 200 - 844 RSF

SUITE DESCRIPTION:

2 Exam rooms, Lab,
Reception / Admin,
Doctor's office

LEASE RATE:

\$2.25 NNN



Chula Vista Medical Arts II

450 4th Avenue, Chula Vista, CA 91910

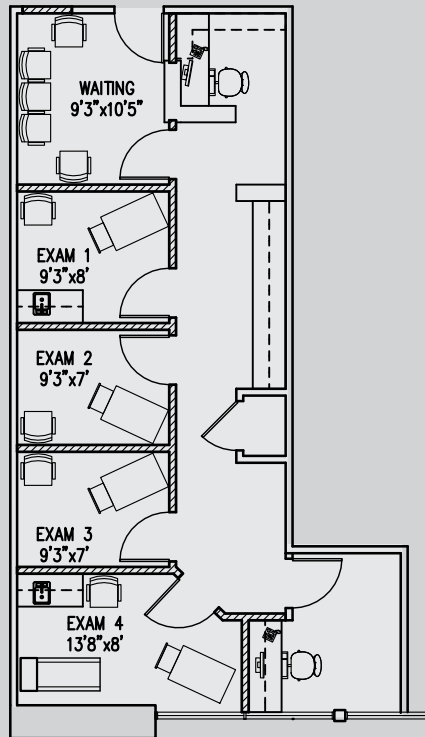
Now Leasing

FLOOR PLAN

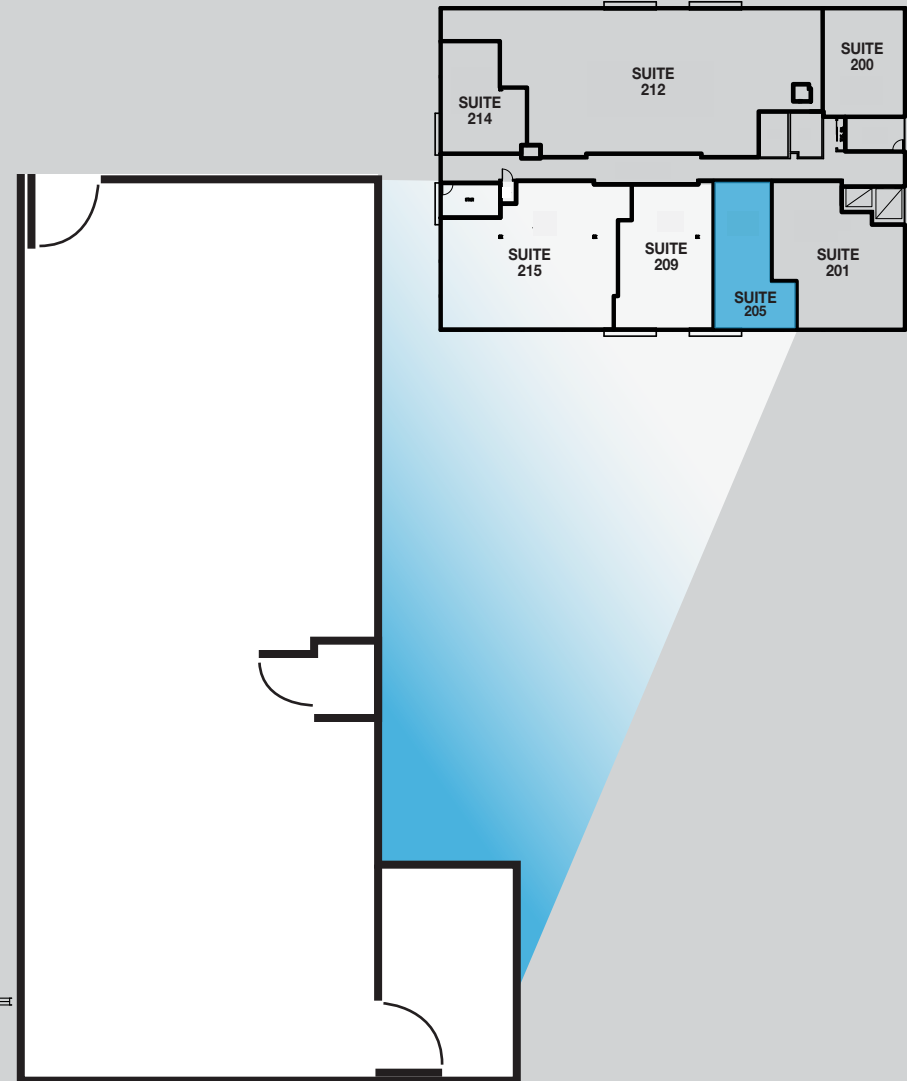
AVAILABLE SUITE:
SUITE 205 - 901 RSF

SUITE DESCRIPTION:
Shell space

LEASE RATE:
\$2.25 NNN



* Hypothetical Floor Plan Layout



Chula Vista Medical Arts II

450 4th Avenue, Chula Vista, CA 91910

Now Leasing

FLOOR PLAN

AVAILABLE SUITE:

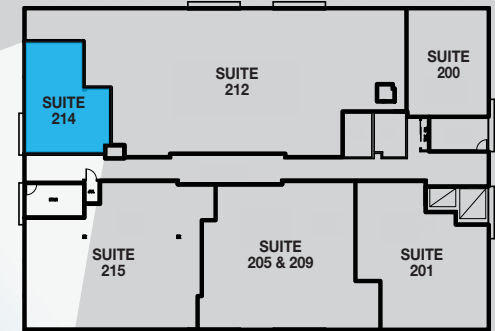
SUITE 214 - 763 RSF

SUITE DESCRIPTION:

2 Exam rooms, 1 Consultation,
In-Suite restroom, 1 Office,
Reception / Admin

LEASE RATE:

\$2.25 NNN



Chula Vista Medical Arts II

450 4th Avenue, Chula Vista, CA 91910

Now Leasing

FLOOR PLAN

AVAILABLE SUITE:

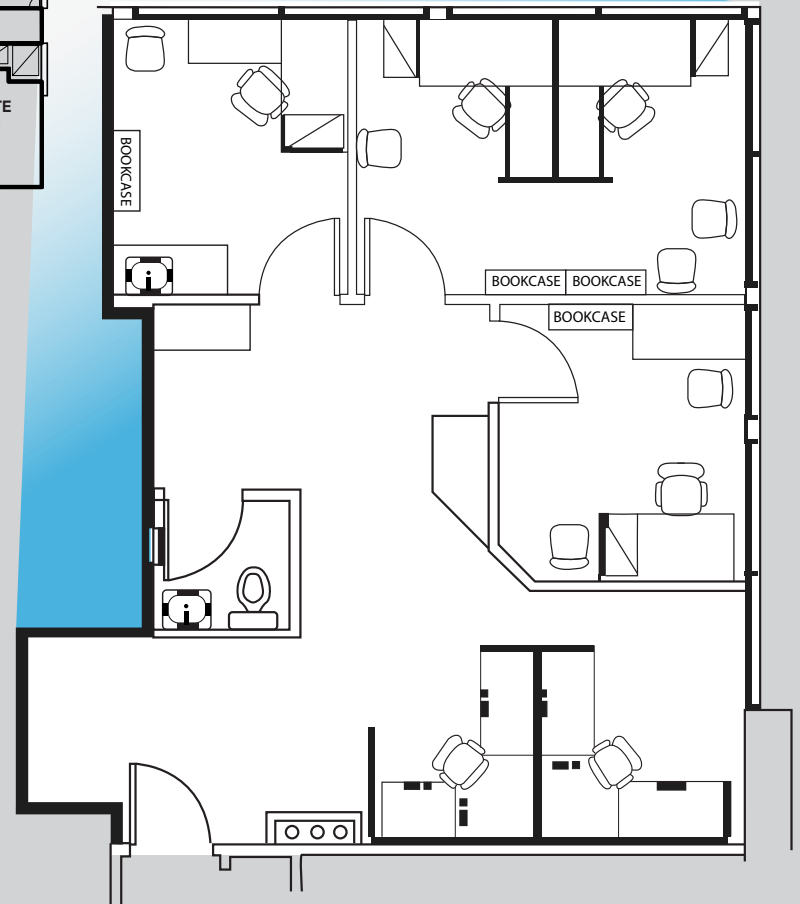
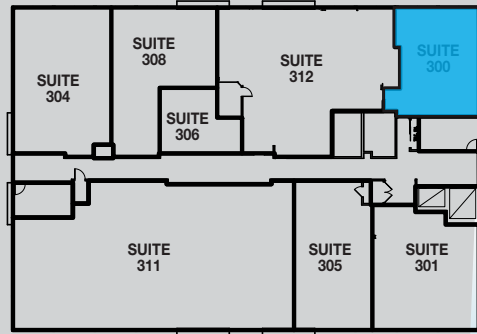
SUITE 300 - 861 RSF

SUITE DESCRIPTION:

Exam Room, 2 Offices,
In-Suite Restroom,
Reception/Admin

LEASE RATE:

\$2.50 NNN



Bryan McKenney
(888) 585 - 6880 | LIC#01505792
Bryan@MedWestRealty.com

Casey P. Immel
(949) 278 - 5376 | LIC#01312850
Casey@MedWestRealty.com

Owned and Operated by:
welltower

Chula Vista Medical Arts II

450 4th Avenue, Chula Vista, CA 91910

Now Leasing

FLOOR PLAN

AVAILABLE SUITE:

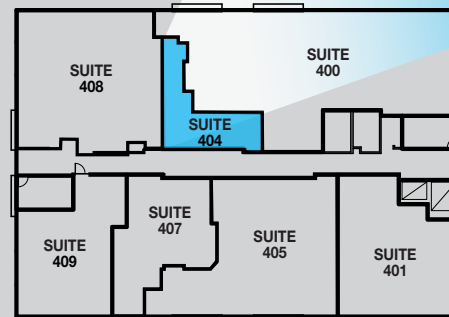
SUITE 401B - 396 RSF

SUITE DESCRIPTION:

Shell space

LEASE RATE:

\$2.25 NNN

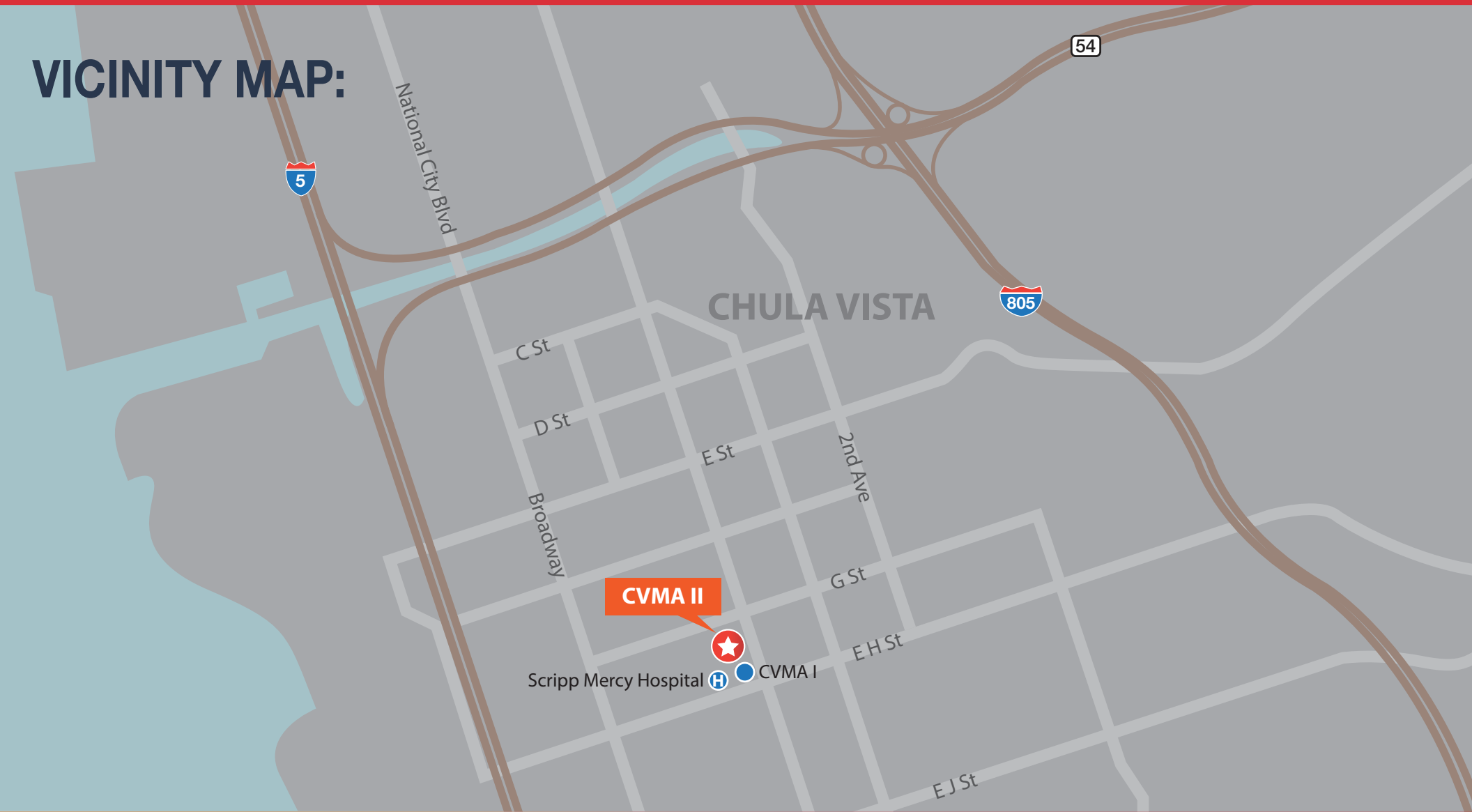


Chula Vista Medical Arts II

450 4th Avenue, Chula Vista, CA 91910

Now Leasing

VICINITY MAP:



Bryan McKenney
(888) 585 - 6880 | LIC#01505792
Bryan@MedWestRealty.com

Casey P. Immel
(949) 278 - 5376 | LIC#01312850
Casey@MedWestRealty.com

Owned and Operated by:

