

# OFFICE FOR SUBLEASE

7202 E ROSEWOOD STREET • TUCSON, AZ 85710

18,300 SF - 2ND FLOOR

5-10 YEAR LEASE AVAILABLE (OR SHORT TERM TO 1/31/2026)

\$12 PSF FULL SERVICE DISCOUNTED RENT  
THROUGH 1/31/2026

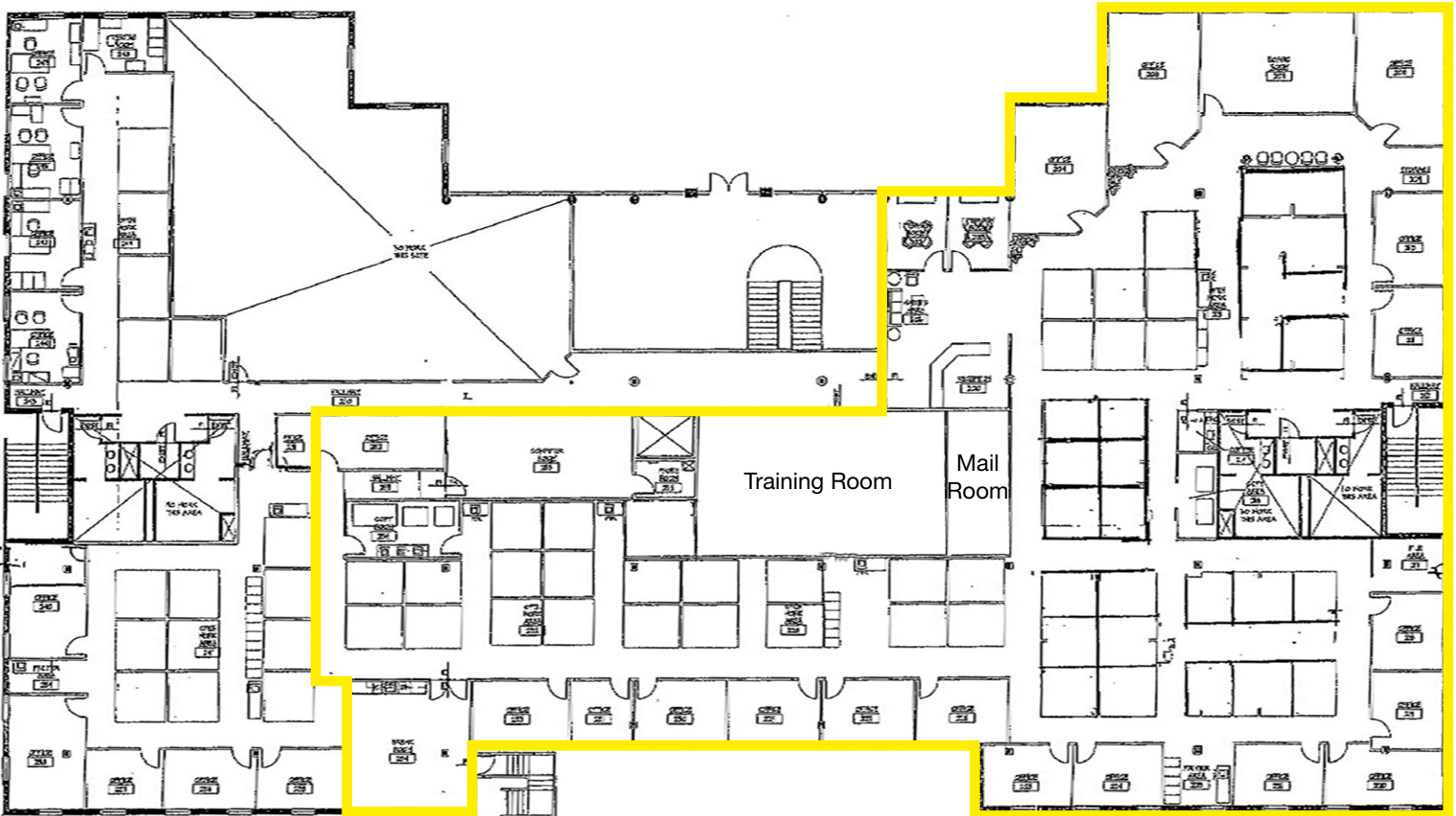


**NAI**Horizon

savills

2900 N Swan Rd, Suite 200  
Tucson, Arizona  
+1 520 326 2200  
[naihorizon.com](http://naihorizon.com)

# Floor Plan



## Property Overview

- Class A Office Space Available for Sublease
- 18,300 SF Available
- \$12.00 PSF Full Service
- 5-10 Year Lease Available (or short term to 1/31/2026)
- Discounted Rent through 3/31/2026
- Fiber into Server Room (w/Raised Floor)
- Efficiently designed floorplan with high-end interior finishes
- 33 Covered Parking Spaces Included
- Furniture may be Available
- High visibility and easy access
- Signage opportunities



*High-speed communications links, separate cooling and UPS power back-up system (wet cell) in communications room. Card-key access on all doors. Generous supply of covered parking. Patio with seating in rear courtyard for employee breaks. Numerous restaurants nearby.*



# OFFICE FOR SUBLEASE

7202 E ROSEWOOD STREET • TUCSON, AZ 85710

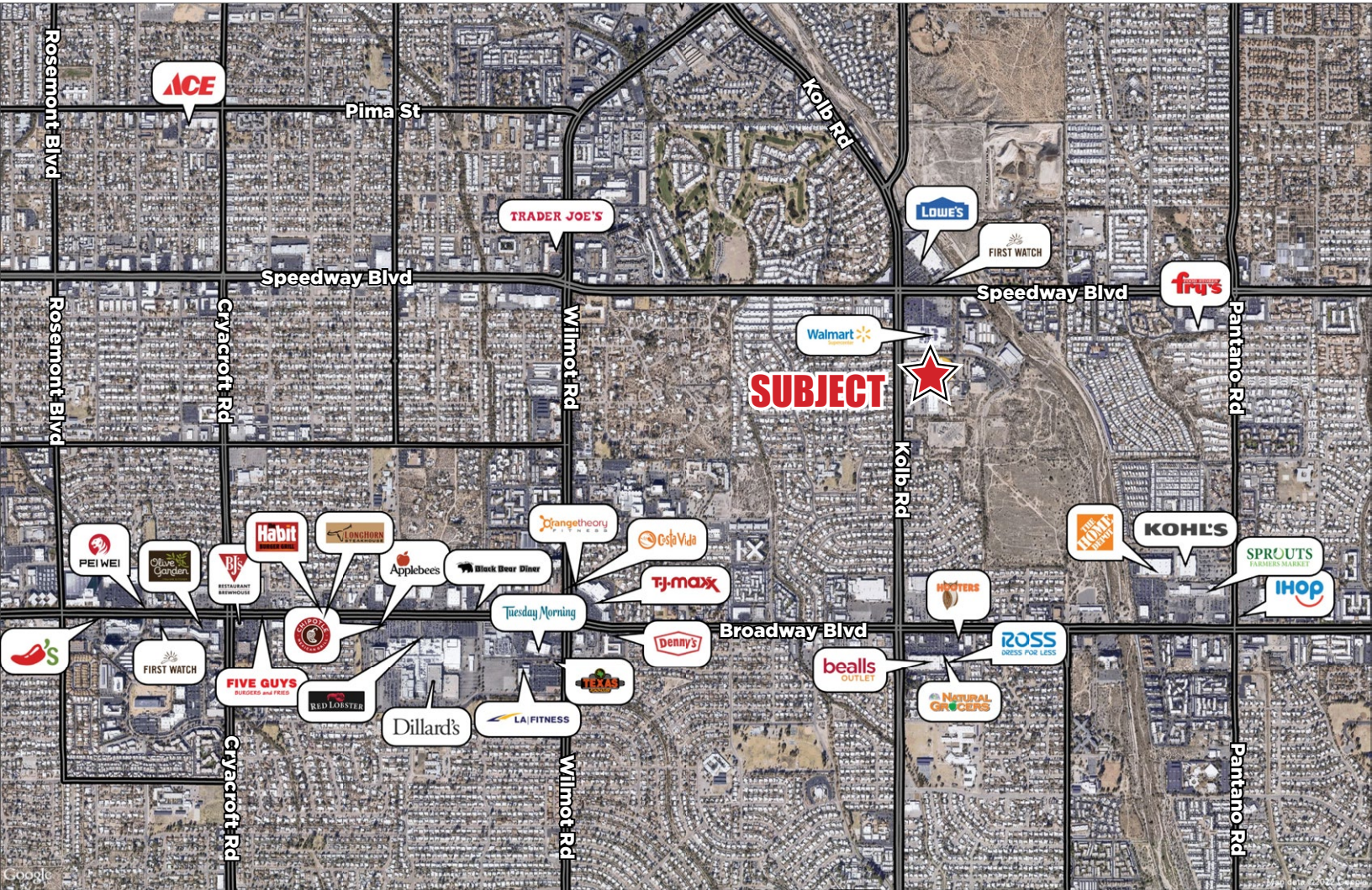


**NAI**Horizon

savills

2900 N Swan Rd, Suite 200  
Tucson, Arizona  
+1 520 326 2200  
[naihorizon.com](http://naihorizon.com)

# Nearby Amenities



# EXCLUSIVE CONTACTS

## **Phil Skillings**

Owner/Agent  
520 977 6369  
[phil.skillings@naihorizon.com](mailto:phil.skillings@naihorizon.com)

## **Kyle Kilgore**

Office/Medical Specialist  
520 999 3736  
[kyle.kilgore@naihorizon.com](mailto:kyle.kilgore@naihorizon.com)

### DISCLAIMER

We obtained the information above from sources we believe to be reliable. However, we have not verified its accuracy and make no guarantee, warranty or representation about it. It is submitted subject to the possibility of errors, omissions, change of price, rental or other conditions, prior sale, lease or financing, or withdrawal without notice. We include projections, opinions, assumptions or estimates for example only, and they may not represent current or future performance of the property. You and your tax and legal advisors should conduct your own investigation of the property and transaction.

T22-04-003