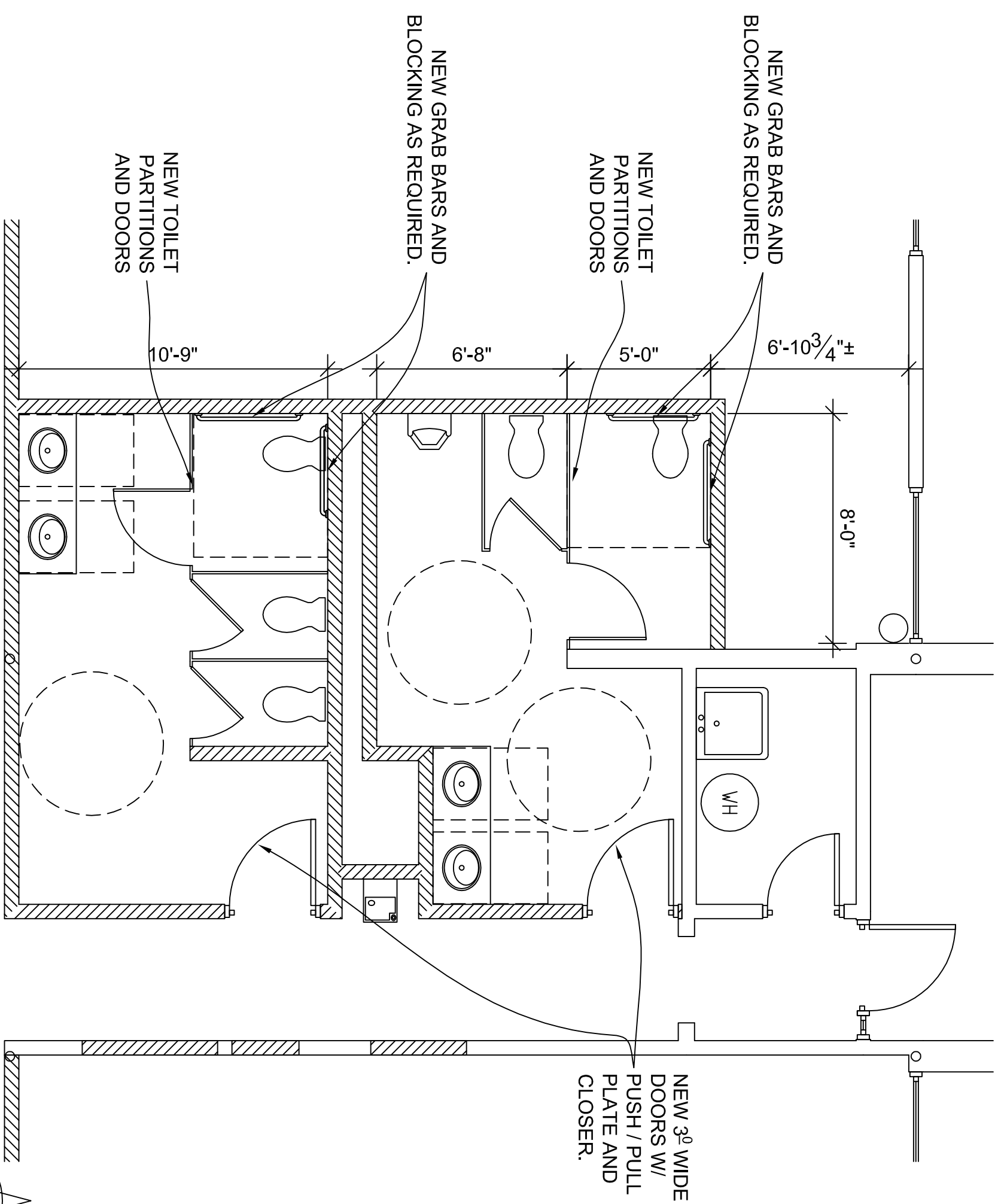
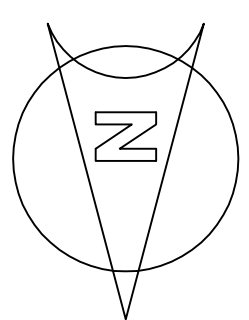


* SEE LIFE SAFETY PLAN SHEET A1.0 FOR LOCATION OF RATED WALLS.

BUILDING 'A' NEW FLOOR PLAN

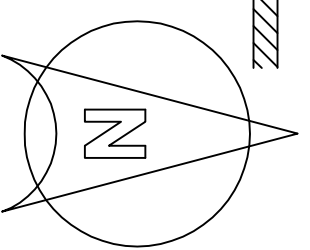
SCALE: 1/8" = 1'-0"



ENLARGED R.T. PLAN

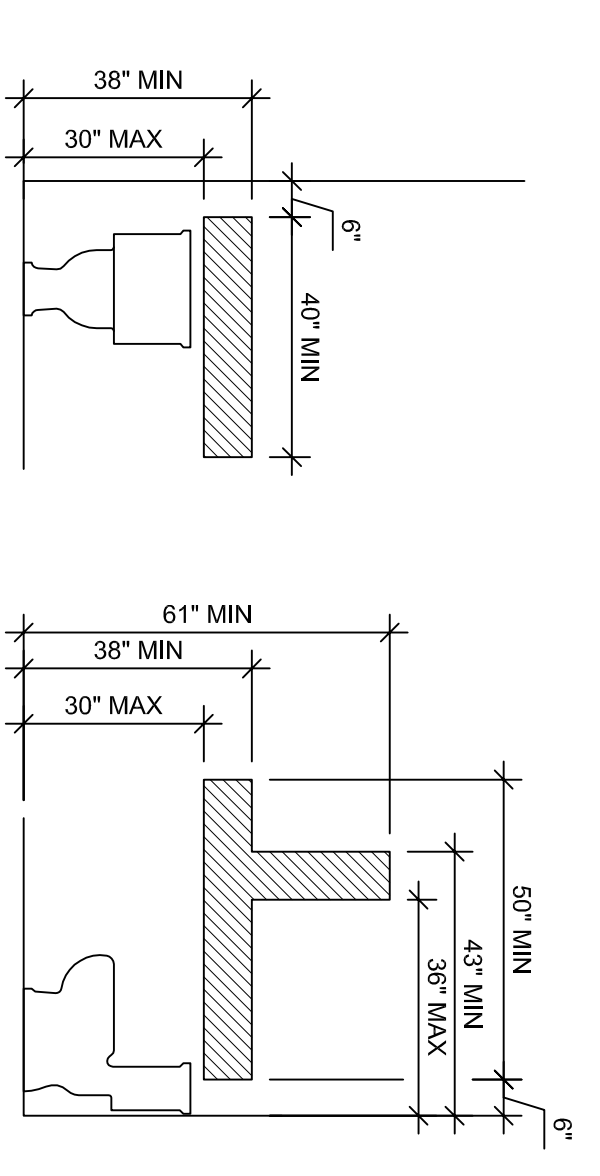
SCALE: 1/4" = 1'-0"

* WALLS TO ALIGN W/ EXISTING UNLESS DIMENSIONED.

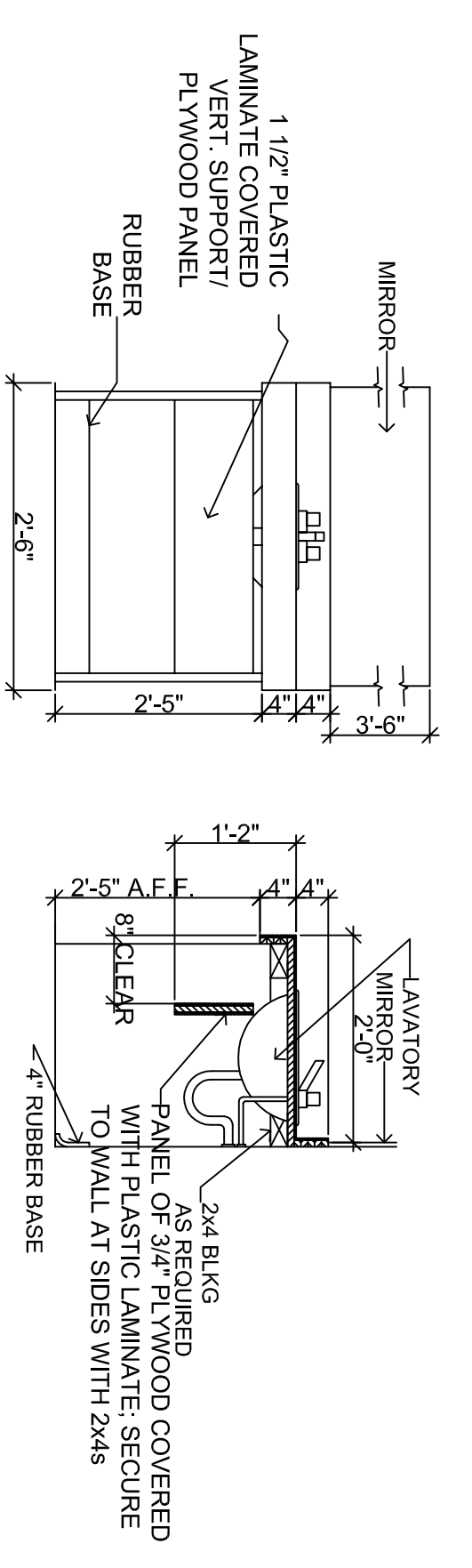


- DOOR SCHEDULE**
- 1 NEW 3/8"x7' GLASS ENTRY DOOR IN ALUM. FRAME. PROVIDE PANIC HARDWARE OR SIGNAGE TO REMAIN UNLOCKED DURING HOURS OF OPERATION PER CODE.
 - 2 NEW 3/8"x7' S.C. WOOD DOOR (45 MIN. RATED) IN H.M. FRAME. PROVIDE LOCK SET AND CLOSER.
 - 3 NEW 3/8"x7' S.C. WOOD DOOR (45 MIN. RATED) IN H.M. FRAME W/ PUSH/PULL PLATE AND CLOSER.

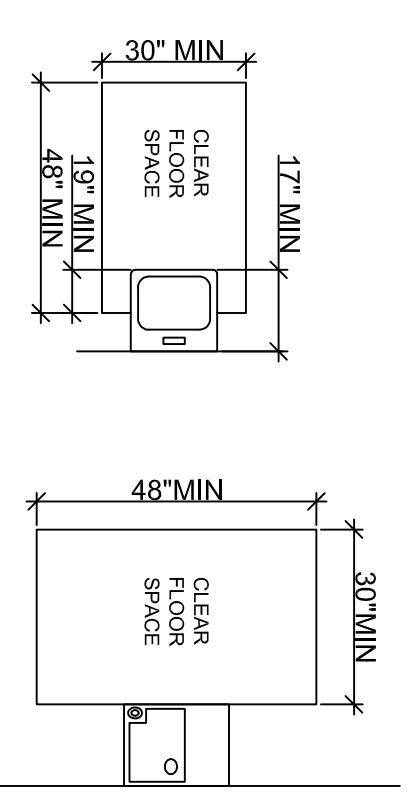
- GENERAL NOTES:**
- 1. VERIFY DOOR AND WINDOW HGT. AND FINISH & FRAME TYPE W/ OWNER.
 - 2. VERIFY HARDWARE SCHEDULE WITH OWNER.
 - 3. INDIVIDUAL GLASS PANELS WITHIN AN INGRESS/EGRESS DOOR OR WITHIN 24" OF DOOR OPENING SHALL BE SAFETY-GLAZED.
 - 4. ALL EXIT DOOR ARE REQUIRED TO HAVE EXTERIOR LANDING AT THE SAME ELEVATIONS AS THE INSIDE FINISH FLOOR.



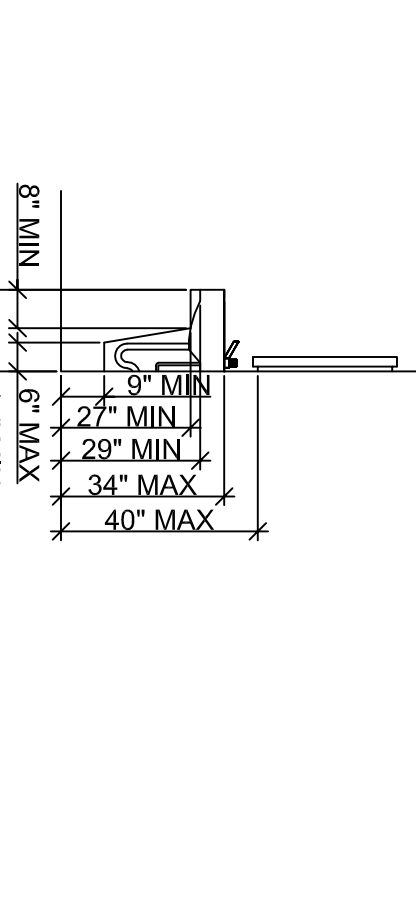
RECOMMENDED REINFORCEMENT AREAS AT TOILETS WITH ADJOINING WALLS



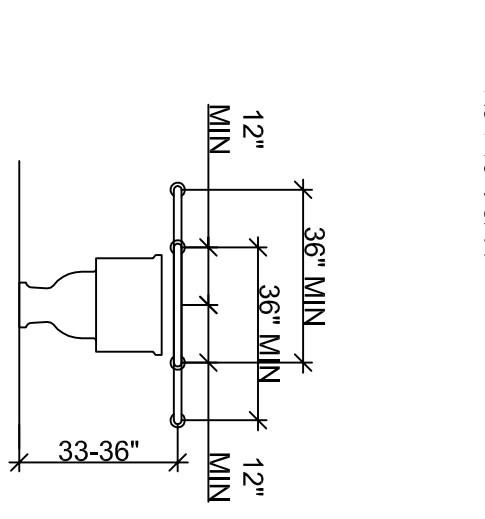
VANITY / LAVATORY ELEVATION / SECTION



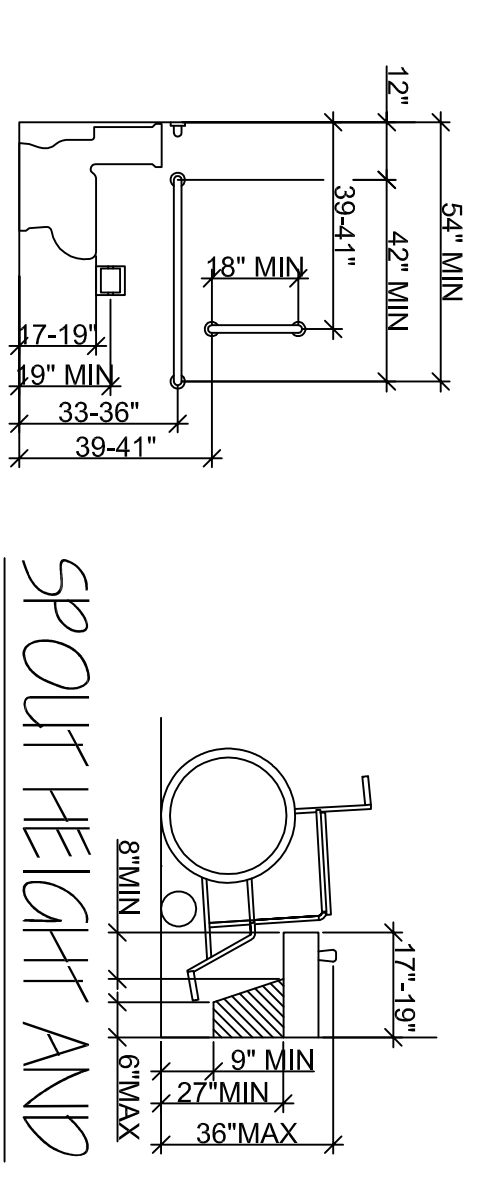
CLEAR FLOOR SPACE



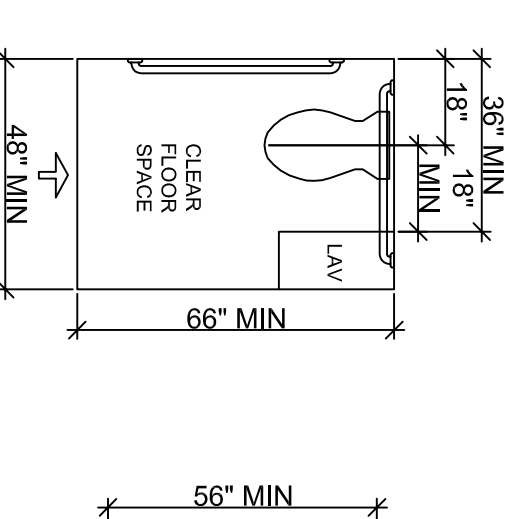
LAVATORIES CLEARANCES



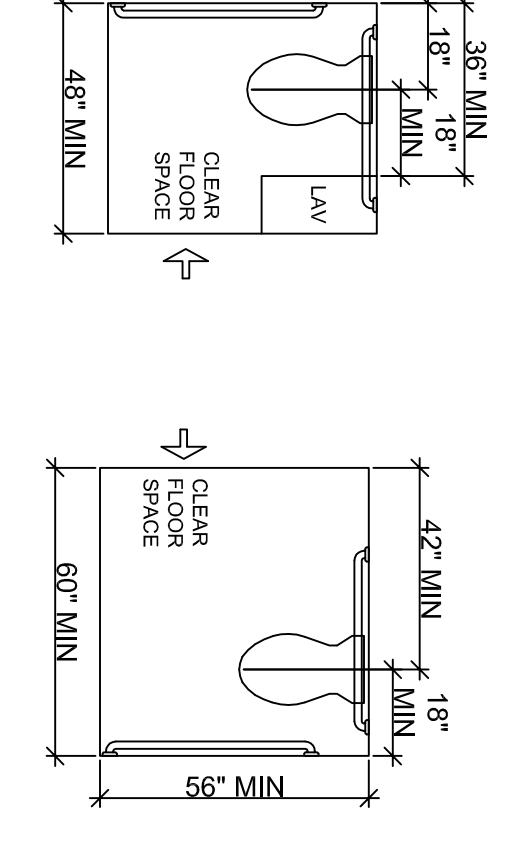
GRAB BARS AT WATER CLOSETS



SPOUT HEIGHT AND KNEE CLEARANCES

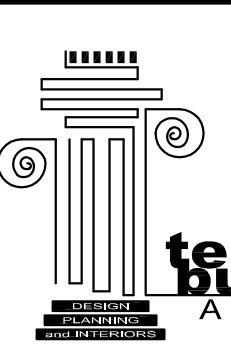


CLEAR FLOOR SPACE AT WATER CLOSETS



CLEAR FLOOR SPACE AT WATER CLOSETS

COPYRIGHT, TBA



11912 KANIS ROAD, SUITE F-8
LITTLE ROCK, ARKANSAS, 72211
(OFFICE) 501-376-3676
(FAX) 501-376-3766
tbadesupplamina@sbccolabel.net

SHEET TITLE:
NEW FLOOR PLAN / ADA DETAILS
(BUILDING A)

A REMODEL FOR:
WOODCREST OFFICE COMPLEX
FT. SMITH, ARKANSAS

PROJECT # 1639

DATE: 06/15/16

A1.2